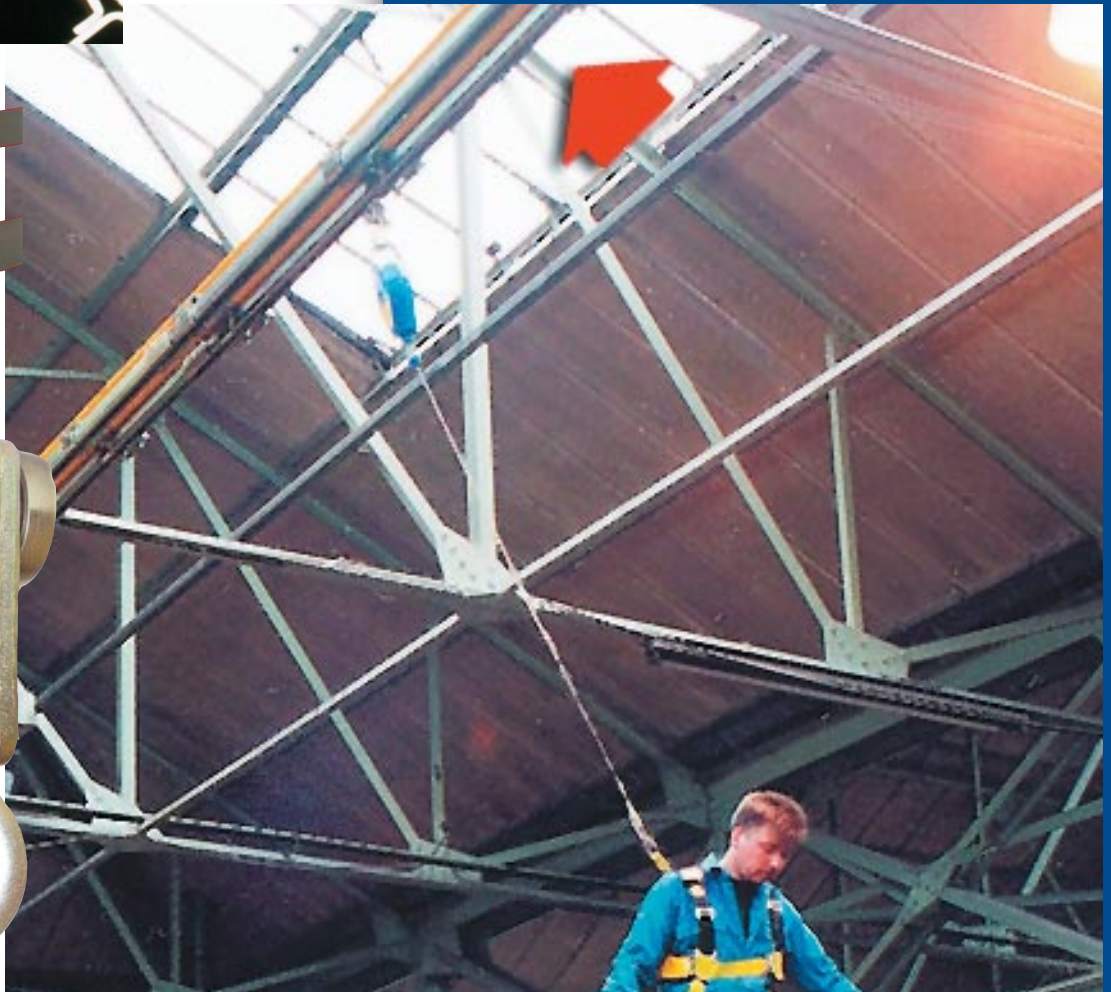
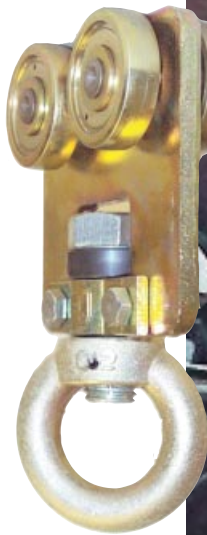
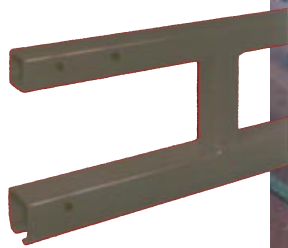


Lightweight
ergonomic design



SPANCO
FALL
ARREST
TRACK



- Indoor or outdoor use.
- All trolley wheels equipped with sealed bearings.
- Swivel eye trolley allows more freedom of movement for operator, and prevents lanyard twisting.



Cost-effective Solutions

ISO 9001 Registered

FALL ARREST TRACK



- Two sizes steel track.
- Two sizes aluminum track.
- One or two man systems.
- Single track systems or bridge crane configurations for greater range of movement
- Lightweight ergonomic design, low co-efficient of friction allows easy movement of trolleys and cranes reducing stress and fatigue on operators.



Cost-effective Solutions

Morgantown Business Park

604 Hemlock Road

Morgantown, PA 19543 U.S.A.

Tel: (610) 286-7200 Fax: (610) 286-0085

800-869-2080 Canada & U.S.A.

95-800-270-1080 Mexico

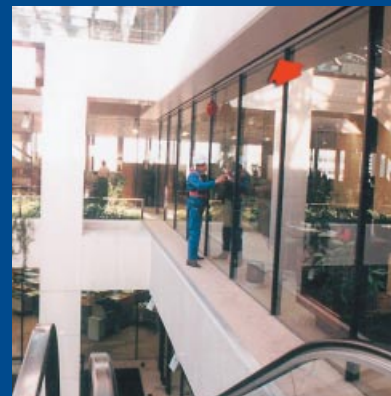
Visit SPANCO's Web site:

www.spanco.com

email: sales@spanco.com



- Use of bridge crane configuration facilitates lateral movement, eliminating the need for multiple systems.
- Standard flush clamps and drop hangers easily attach to existing building structures. Adequacy of structure must be determined by user prior to attachment of fall arrest system.
- Low profile design saves up to 3 feet of headroom versus wire systems.
- All track, trolleys cranes and hangers designed in accordance with A.N.S.I. Spec. No. Z359.1-1992 and O.S.H.A Stds. 1926.502
- Unique truss track design enables greater distance between support points, with minimum loss of headroom.



PERSONAL FALL ARREST 1-Man, Plain Track

| Track Series | Maximum Support Centers |
|--------------|-------------------------|
| 500 | 2' - 0" |
| 600 | 3' - 4" |
| 700 | 6' - 0" |
| 6" ALU-TRACK | 7' - 0" |
| 8" ALU-TRACK | 10' - 0" |

PERSONAL FALL ARREST Truss Design - 1-Man Systems

| Truss | Depth | Maximum Support Centers |
|--------|--------------|-------------------------|
| RFA520 | 10" | 14' |
| RFA525 | 1' - 0 3/8 " | 18' |
| RFA530 | 1' - 2 3/8 " | 23' |
| RFA620 | 11" | 28' |