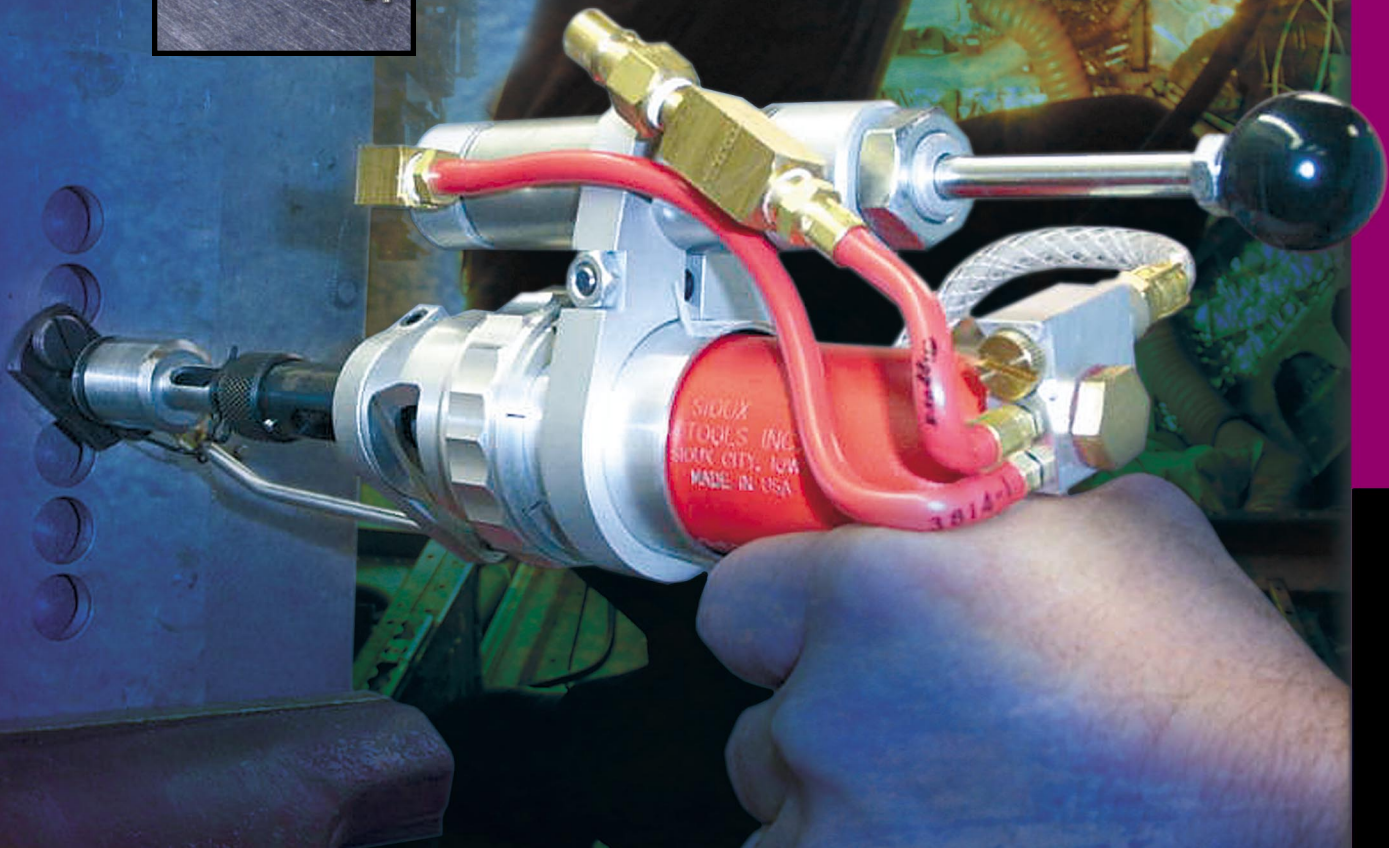




E A SELZER

AEROSPACE





SAFETY Precaution: Read and follow all safety and operating instructions.
WARNING: Face & eye protection must be worn while operating power tools, per ANSI B186.1

Warranty

SIoux TOOLS, INC. POWER TOOLS WARRANTY

SIoux TOOLS, INC. WARRANTS TO THE ORIGINAL PURCHASER THAT THE COMPANY'S POWER TOOLS ARE FREE FROM DEFECTS IN MATERIALS AND WORKMANSHIP. For one (1) year following the date of purchase, Sioux Tools will repair or replace, at Sioux Tools' option, any part that is defective in materials or workmanship. All warranty requests or claims must be made no later than 60 days following the end of the 1-year warranty period. Repair or replacement shall be at the election and expense of Sioux Tools, and is the exclusive remedy in place of all other rights and remedies.

NO OTHER WARRANTIES, EXPRESS, IMPLIED OR STATUTORY, INCLUDING WITHOUT LIMITATION ANY IMPLIED WARRANTY OF MERCHANTABILITY OR FITNESS FOR A PARTICULAR PURPOSE, SHALL APPLY AND ALL SUCH WARRANTIES ARE HEREBY EXPRESSLY DISCLAIMED. Sioux Tools' warranty applies only to new products purchased from Sioux Tools, Inc. or its authorized distributors. Sioux Tools does NOT provide warranty for products subjected to abnormal use. Abnormal use includes: misuse, accident, modification, unreasonable use, neglect, lack of maintenance, or use after the tool is significantly worn or repaired by someone other than Sioux Tools, Inc. or its Authorized Service Representatives.

A consumable product or part is warranted at the time of sale, only against defects in workmanship and materials that prevent its use. Consumable items are goods reasonably expected to be used up or damaged during use, including but not limited to drill bits, saw blades, grinding discs, sanding discs, batteries, and light bulbs.

SIoux TOOLS, INC. SHALL NOT BE LIABLE FOR ANY INCIDENTAL, SPECIAL, CONSEQUENTIAL COSTS OR DAMAGES INCURRED BY THE PURCHASER OR OTHERS (including, without limitation, lost profits, revenues, anticipated sales, business opportunities or goodwill, interruption of business and any other injury or damage.)

This warranty is non-transferable. Sioux Tools, Inc. reserves the right to make changes in design and/or construction at any time without incurring any obligation related to tools previously sold.



SAFETY Precaution: Read and follow all safety and operating instructions.

WARNING: Face & eye protection must be worn while operating power tools, per ANSI B186.1

High-Speed Drill with Coolant Attachment

Principle of Operation:

A standard air powered high-speed drill with a Sheridan foot adaptor mounted onto the chuck guard with a barrel and drill template guide extending from the front.

If lubrication option is utilized, the canister is mounted to the top of the drill motor. Exhaust air creates the pressure to force the lubrication to the drill point.

Vacuum porting is also part of the optional equipment and can be built into the drill template guide.

Special aircraft adaptors can be ordered for mounting 21000 & 22000 series bushings.

Depressing the throttle activates the motor to rotate at speed, turning the motor spindle.

Barrel assemblies are determined by the amount of travel required to drill through the material.

Drill guides require the pertinent information about the application: drill diameter, template thickness, template O.D., etc.

High-speed Drill Selection Guide:

What type of material?

What rpm is specified?

What is the material thickness?

What is the template thickness?

What is the diameter of hole being drilled?

What is the template hole O.D.?

Will lubrication be required?

Will vacuum be required?

What type/size of aircraft bushing is being used?

Are there any special considerations?



SAFETY Precaution: Read and follow all safety and operating instructions.

WARNING: Face & eye protection must be worn while operating power tools, per ANSI B186.1

HIGH SPEED DRILL

Performance:

Power: 0.9 hp

Speed: 20,000 rpm

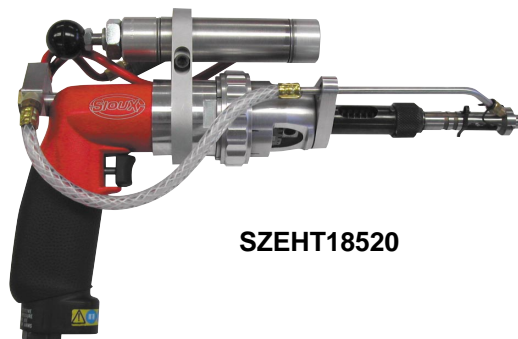
Chuck Capacity: 1/4" (6 mm)

Features:

Quick Fill piggy-back coolant tank

Adjustable coolant/air mist flow

Durable case for storage



SZEHT18520

High-speed drill shown with optional Barrel Assembly and drill guide

Model Number	Horsepower	Chuck Capacity		Free Speed rpm	Length (including front bracket)		Weight	
	hp	in.	mm		in.	mm	lb	kg
SZEHT18520	0.9	1/4	6	20,000	7-5/8	194	4	1.8

General:

Air Inlet Size: 1/4" NPT

Recommended Hose Size: 3/8" (10 mm)

Performance rated @ 90 psig (6.2 bar) air pressure

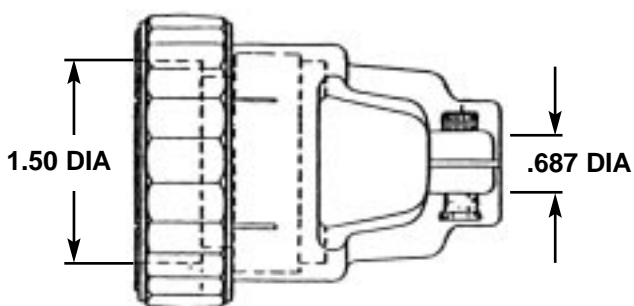
Tools available with BSPT air inlet upon request

Standard Equipment:

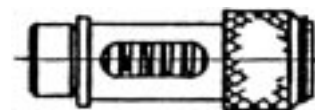
Parts list, Safety and Instruction manual

Comfort Grip

SZE4039



SZE12605-5



1-1/4 Travel

Use with 6" extension drills when drilling depth will not exceed 1-1/8".

HIGH SPEED DRILL KIT SELECTION CHART

Drill motor RPM: 20,000

Material type and thickness: (drill stroke required)

Guide bushing dimensions:

template thickness/guide hole I.D.

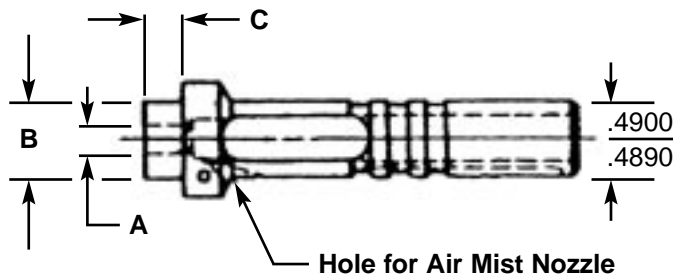
(see diagram for A, B, & C dimensions)

Aircraft Drill Bushing required if applicable:

(21000 or 22000 series)

Lubrication or vacuum requirements?

Other special requirements?



SAFETY Precaution: Read and follow all safety and operating instructions.

WARNING: Face & eye protection must be worn while operating power tools, per ANSI B186.1

Compression Riveters

Principle of Operation:

Air powered compression riveters deliver a squeezing action, which drives the rivet by “flowing” the rivet metal with compressed forces. Squeezing action is obtained by coupling an air cylinder and piston to a wedge or cam, thus multiplying the original force to extreme ratios. High compressive forces are obtained from a relatively compact unit having small diameter cylinders and using very little compressed air.

The advantage of squeeze riveting is simple sounds of air exhaust and forward piston movement developing tremendous pressures being exerted at the work point.

Optimum control may be obtained in compression riveting. The rivet head is formed by a steady, uniform squeeze action. The set plunger and dolly are an integral part of the squeezer itself.

Classification of Squeezers:

Alligator: The squeezing action of the jaws are similar to the movement of an Alligators jaws.

‘C’ Type: The rivet is squeezed between the two ends of the ‘C’.

Type of Rivet:

- Rivet material.
- Rivet body diameter.
- Rivet length before and after compression.
- Force required to compress rivet.

What material is the rivet made from?

What size is the rivet?

What is the form of the head?

What components are being assembled?

Are there any clearance problems?

Is Alligator or ‘C’ type yoke required?

How is the application being done now?

Are there any special considerations?



SAFETY Precaution: Read and follow all safety and operating instructions.

WARNING: Face & eye protection must be worn while operating power tools, per ANSI B186.1

COMPRESSION RIVETERS

Single, Tandem and Triple cylinder options

Riveting capacity:

1/8" (3 mm) (single cylinder)

3/16" (5 mm) (tandem cylinder)

1/4" (6 mm) (triple cylinder)

Safety throttle



SZE5030



SZE7030



SZE9030

Model Number	Rivet Set Shank Diameter		Cap. Cold Rivet Diameter				Std. Alligator Yoke Dim.				Max Force at 90 psi		Moving Jaw				Net Weight w/Yoke		Overall Length	
			Steel		Alum.		Reach		Closed Ht.				Max Travel		Stroke at max Force					
	in.	mm	in.	mm	in.	mm	in.	mm	in.	mm	lb	kN	in.	mm	in.	mm	lb	kg	in.	mm
CR-1 Single Cylinder																				
SZEA5000	NA	NA	1/8	3	3/32	2	NA	NA	NA	NA	3000	13.4	5/8	16	final 1/16	2	2-1/4	1.0	7-11/16	195
SZEA5015	3/16	5	1/8	3	3/32	2	1-1/2	38	7/8	22	3000	13.4	5/8	16	final 1/16	2	3.75	1.7	9-3/16	233
SZEA5022	3/16	5	3/32	2	3/32	2	2-1/4	57	7/8	22	2200	9.8	7/8	22	final 3/32	2	4.25	1.9	10-1/8	257
SZEA5030	3/16	5	3/32	2	3/32	2	3	76	7/8	22	1800	8.0	1-1/4	32	final 1/8	3	4.75	2.2	10-7/8	276
CR-2																				
SZEA50152	1/4	6	1/8	3	3/32	2	1-1/2	38	7/8	22	3000	13.4	5/8	16	final 1/16	2	3.75	1.7	9-3/16	233
SZEA50222	1/4	6	3/32	2	3/32	2	2-1/4	57	7/8	22	2200	9.8	7/8	22	final 3/32	2	4.25	1.9	10-1/8	257
SZEA50302	1/4	6	3/32	2	3/32	2	3	76	7/8	22	1800	8.0	1-1/4	32	final 1/8	3	4.75	2.2	10-7/8	276
CR-1 Tandem Cylinder																				
SZEA7000	NA		3/16	5	5/32	4	NA	NA	NA	NA	6000	26.7	5/8	16	final 1/16	2	4	1.8	10-1/2	267
SZEA7015	3/16	5	3/16	5	5/32	4	1-1/2	38	7/8	22	6000	26.7	5/8	16	final 1/16	2	5.5	2.5	12	305
SZEA7022	3/16	5	5/32	4	1/8	3	2-1/4	57	7/8	22	4300	19.1	7/8	22	final 3/32	2	6	2.7	13	330
SZEA7030	3/16	5	1/8	3	3/32	2	3	76	7/8	22	3400	15.1	1-1/4	32	final 1/8	3	6.25	2.8	13.75	349
CR-2																				
SZEA70152	1/4	6	3/16	5	5/32	4	1-1/2	38	7/8	22	6000	26.7	5/8	16	final 1/16	2	5.5	2.5	12	305
SZEA70222	1/4	6	5/32	4	1/8	3	2-1/4	57	7/8	22	4300	19.1	7/8	22	final 3/32	2	6	2.7	13	330
SZEA70302	1/4	6	1/8	3	3/32	2	3	76	7/8	22	3400	15.1	1-1/4	32	final 1/8	3	6.25	2.8	13.75	349
CR-1 Triple Cylinder																				
SZEA9000	NA	NA	1/4	6	3/16	5	NA	NA	NA	NA	9000	40.1	5/8	16	final 1/16	2	5.5	2.5	14.5	368
SZEA9015	3/16	5	1/4	6	3/16	5	1-1/2	38	7/8	22	9000	40.1	5/8	16	final 1/16	2	7	3.2	16	406
SZEA9022	3/16	5	3/16	5	5/32	4	2-1/4	57	7/8	22	7000	31.2	7/8	22	final 3/32	2	7.5	3.4	16.75	426
SZEA9030	3/16	5	3/16	5	5/32	4	3	76	7/8	22	5200	23.1	1-1/4	32	final 1/8	3	8	3.6	17.5	445
CR-2																				
SZEA90152	1/4	6	1/4	6	3/16	5	1-1/2	38	7/8	22	9000	40.1	5/8	16	final 1/16	2	7	3.2	16	406
SZEA90222	1/4	6	3/16	5	5/32	4	2-1/4	57	7/8	22	7000	31.2	7/8	22	final 3/32	2	7.5	3.4	16.75	426
SZEA90302	1/4	6	3/16	5	5/32	4	3	76	7/8	22	5200	23.1	1-1/4	32	final 1/8	3	8	3.6	17.5	445

General:

Air Inlet Size: 1/4" NPT

Recommended Hose Size: 3/8" (10 mm)

Performance rated @ 90 psig (6.2 bar) air pressure

Tools available with BSPT air inlet upon request

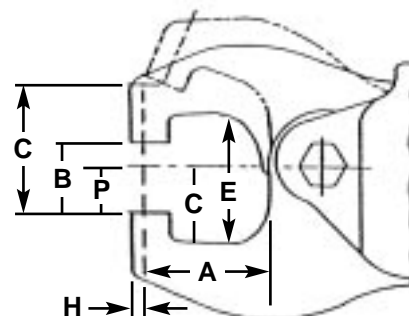
Standard Equipment:

Parts List, Safety and Instruction Manual

Safety throttle action

ALLIGATOR YOKE NOMENCLATURE

- A Reach
- B Closed Height
- C Total
- E Gap
- H Lower Offset
- N Depth from centerline to Stationary Jaw Gap
- P Depth from centerline to Stationary Jaw set hole surface



A		B		C		E		H		N		P	
in.	mm	in.	mm	in.	mm	in.	mm	in.	mm	in.	mm	in.	mm
1-1/2	38	7/8	22	1-1/2	38	1-5/8	41	7/32	6	1.0	1	5/8	16
2-1/4	57	7/8	22	1-7/8	48	2-1/8	54	7/32	6	1-1/4	32	5/8	16
3.0	76	7/8	22	2-1/8	54	2-1/8	54	7/32	6	1-1/4	32	5/8	16



SAFETY Precaution: Read and follow all safety and operating instructions.

WARNING: Face & eye protection must be worn while operating power tools, per ANSI B186.1

COMPRESSION RIVETERS

Single, Tandem and Triple cylinder options

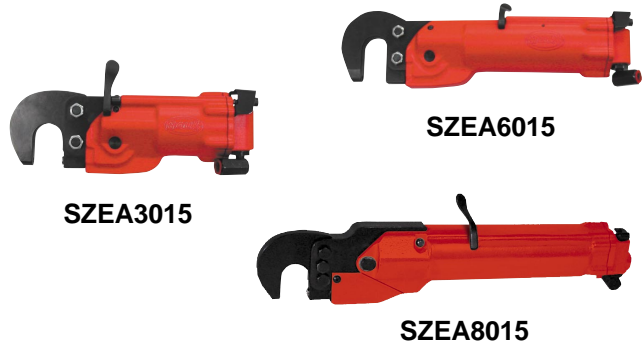
Riveting capacity:

1/8" (3 mm) (single cylinder)

3/16" (5 mm) (tandem cylinder)

1/4" (6 mm) (triple cylinder)

Safety throttle



Model Number	Rivet Set Shank Diameter		Cap. Cold Rivet Diameter				Standard "C" Yoke Dimension				Closed Height		Max Travel		Max Force at 90 psi		Stroke at max Force		Net Weight w/Yoke		Overall Length	
			Steel		Alum.		Reach		Gap										lb	kg		
	in.	mm	in.	mm	in.	mm	in.	mm	in.	mm	in.	mm	lb	kN	in.	mm	lb	kg			in.	mm
CR-1 Single Cylinder																						
SZEA3000	N/A	N/A	3/32	2	1/8	3	N/A	N/A	N/A	N/A	N/A	N/A	9/16	14	3000	13.4	f-1/16	2	3-1/2	1.6	8-1/2	216
SZEA3015	3/16	5	3/32	2	1/8	3	1-1/2	38	1-1/4	32	11/16	78	9/16	14	3000	13.4	f-1/16	2	4-1/2	2.0	10-1/4	262
CR-2																						
SZEA30152	1/4	6	3/32	2	1/8	3	1-1/2	38	1-1/4	32	11/16	78	9/16	14	3000	13.4	f-1/16	2	4-1/2	2.0	10-1/4	262
CR-1 Tandem Cylinder																						
SZEA6000	N/A	N/A	5/32	4	3/16	5	N/A	N/A	N/A	N/A	N/A	N/A	9/16	14	6000	26.7	f-1/16	2	4-1/2	2.0	11-1/4	287
SZEA6015	3/16	5	5/32	4	3/16	5	1-1/2	38	1-1/4	32	11/16	78	9/16	14	6000	26.7	f-1/16	2	5-1/2	2.5	14	356
CR-2																						
SZEA60152	1/4	6	5/32	4	3/16	5	1-1/2	38	1-1/4	32	11/16	78	9/16	14	6000	26.7	f-1/16	2	5-1/2	2.5	14	356
CR-1 Triple Cylinder																						
SZEA8000	N/A	N/A	5/32	4	1/4	6	N/A	N/A	N/A	N/A	N/A	N/A	9/16	14	9000	40.1	f-1/16	2	7-1/2	3.4	16	406
SZEA8015	3/16	5	3/16	5	1/4	6	1-1/2	38	1-1/4	32	11/16	78	9/16	14	9000	40.1	f-1/16	2	8-1/2	3.9	18-3/4	476
CR-2																						
SZEA80152	1/4	6	3/16	5	1/4	6	1-1/2	38	1-1/4	32	11/16	78	9/16	14	9000	40.1	f-1/16	2	8-1/2	3.9	18-3/4	476

General:

Air Inlet Size: 1/4" NPT

Recommended Hose Size: 3/8" (10 mm)

Performance rated @ 90 psig (6.2 bar) air pressure

Tools available with BSPT air inlet upon request

Standard Equipment:

Parts List, Safety and Instruction Manual

Safety throttle action

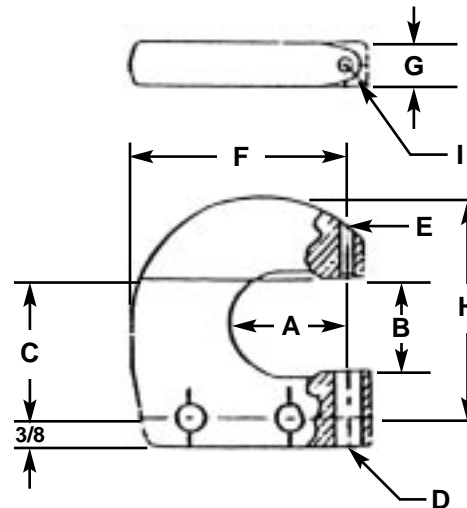
Special yokes available upon request.

Due to a variety of jobs and applications, Squeeze Riveters are not supplied with rivet sets.

Please contact Sioux Tools, Inc. or your local distributor for rivet set information.

C-YOKE NOMENCLATURE

- A Reach
- B Gap
- C Height from yoke hole center to top of yoke gap
- D Bottom set hole diameter CR-1 or CR-2
- E Top set hole diameter CR-1 or CR-2
- F Width of yoke set hole center to end of yoke
- G Thickness of yoke
- H Height of yoke from bolt hole center to top of yoke
- I Radius from set hole center



A		B		C		D		E		F		G		H		I	
in.	mm	in.	mm	in.	mm	in.	mm	in.	mm	in.	mm	in.	mm	in.	mm	in.	mm
1-1/2	38	1-1/4	32	1-7/8	48	3/8	10	3/16	5	2-7/8	73	9/16	14	3.0	76	1/4	6
						7/16	11	1/4	6								

SAFETY Precaution: Read and follow all safety and operating instructions.

WARNING: Face & eye protection must be worn while operating power tools, per ANSI B186.1

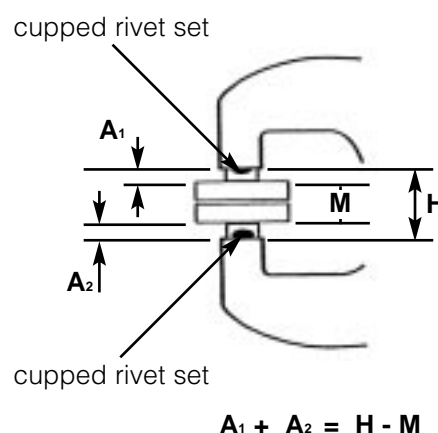


For maximum power the combined length of the two rivet sets must be of the correct length.

Determine the correct lengths as follows:

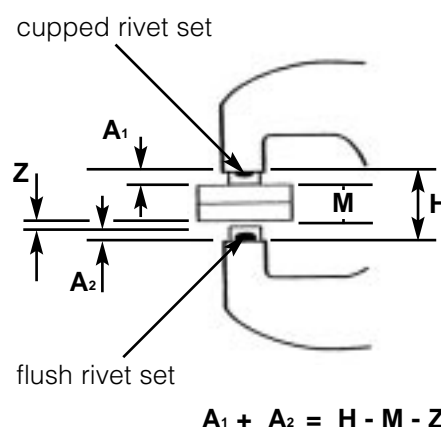
1) When two cupped rivet sets are used:

The length of the body dimensions of the two rivet sets (A_1 , A_2) should equal the closed height dimension of the yoke (H) minus the total thickness of material being riveted together.



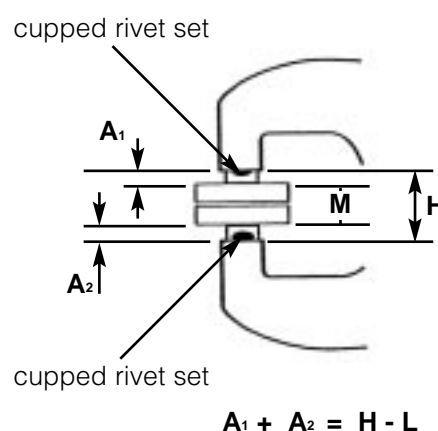
2) When one cupped set and one flush set are used:

The length of the body dimensions of the two rivet sets (A_1 , A_2) should equal the closed height dimension of the yoke H minus the total thickness of material being riveted (M) and the height of the finished rivet head (Z) compressed by the flush set (A).

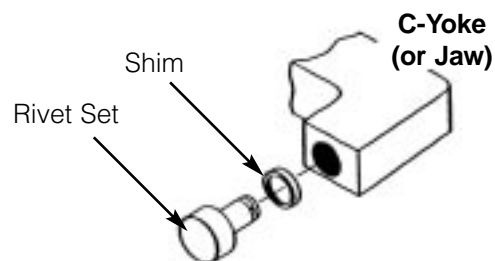


3) When two flush sets are used:

The length of the body dimensions of the two rivet sets (A_1 , A_2) should equal the closed height dimension of the yoke (H) minus the overall length of the rivet (L) after it is compressed.



If necessary, select rivet sets a little short and shim to the correct length using spacer shims.



SAFETY Precaution: Read and follow all safety and operating instructions.

WARNING: Face & eye protection must be worn while operating power tools, per ANSI B186.1

Pneumatic Routers

Principle of Operation:

Routers are pneumatic motors geared or governed to speed determined by the application, materials, cutter and operation desired.

Thumb throttle or lever control operates the motor thus turning the motor spindle at the chosen rpm. Collets are available in standard and metric sizes measured to accommodate the shank of the cutting tool to be utilized. The cutting tool extends through a nosepiece and router guide to the work piece. The router guide is attached to the nosepiece to guide and align the motor spindle, collet and cutter to the application in order to combat any deflection.

Classification of Routers:

Hand held: Cylindrical design held by hand.

Base mounted: Cylindrical design mounted into a base.

Mountable motor unit: Cylindrical design motor to be mounted in an already existing base.

Router selection guide:

Type of Material?

Cutter?

What is the material thickness?

What size is the cutter shank?

Are there any access concerns?

How is the application being done now?

Are there any special concerns?



HAND HELD ROUTERS

Performance:

Power: 1.0 hp - 1.5 hp

Speed: 7200 rpm - 20,000 rpm

Collet Capacity: 1/4" (6 mm) – 1/2" (13 mm)

Features:

Lever or Thumb-flip throttle



Model Number	Handle	Horsepower	Collet Capacity		Speed rpm	Weight		Length		Diameter	
			in.	mm		lb	kg	in.	mm	in.	mm
SZER4003LV1	Lever Throttle	1.0	1/4	6	20,000	4.0	1.8	11-1/2	292	2	51
SZER4003LV3	Lever Throttle	1.0	3/8	10	20,000	4.0	1.8	11-1/2	292	2	51
SZER4003TF1	Thumb-Flip Throttle	1.0	1/4	6	20,000	4.0	1.8	11-1/2	292	2	51
SZER4003TF3	Thumb-Flip Throttle	1.0	3/8	10	20,000	4.0	1.8	11-1/2	292	2	51
SZER4006LV1	Lever Throttle	1.5	1/4	6	16,000	5.0	2.3	12-1/2	317	2-1/2	64
SZER4006LV3	Lever Throttle	1.5	3/8	10	16,000	5.0	2.3	12-1/2	317	2-1/2	64
SZER4006LV4	Lever Throttle	1.5	1/2	13	16,000	5.0	2.3	12-1/2	317	2-1/2	64
SZER4006TF1	Thumb-Flip Throttle	1.5	1/4	6	16,000	5.0	2.3	12-1/2	317	2-1/2	64
SZER4006TF3	Thumb-Flip Throttle	1.5	3/8	10	16,000	5.0	2.3	12-1/2	317	2-1/2	64
SZER4006TF4	Thumb-Flip Throttle	1.5	1/2	13	16,000	5.0	2.3	12-1/2	317	2-1/2	64
SZER4006G12LV1	Lever Throttle	1.5	1/4	6	12,000	5.0	2.3	12-1/2	317	2-1/2	64
SZER4006G12LV3	Lever Throttle	1.5	3/8	10	12,000	5.0	2.3	12-1/2	317	2-1/2	64
SZER4006G12LV4	Lever Throttle	1.5	1/2	13	12,000	5.0	2.3	12-1/2	317	2-1/2	64
SZER4006G12TF1	Thumb-Flip Throttle	1.5	1/4	6	12,000	5.0	2.3	12-1/2	317	2-1/2	64
SZER4006G12TF3	Thumb-Flip Throttle	1.5	3/8	10	12,000	5.0	2.3	12-1/2	317	2-1/2	64
SZER4006G12TF4	Thumb-Flip Throttle	1.5	1/2	13	12,000	5.0	2.3	12-1/2	317	2-1/2	64
SZER4006G7LV1	Lever Throttle	1.5	1/4	6	7200	5.0	2.3	12-1/2	317	2-1/2	64
SZER4006G7LV3	Lever Throttle	1.5	3/8	10	7200	5.0	2.3	12-1/2	317	2-1/2	64
SZER4006G7LV4	Lever Throttle	1.5	1/2	13	7200	5.0	2.3	12-1/2	317	2-1/2	64
SZER4006G7TF1	Thumb-Flip Throttle	1.5	1/4	6	7200	5.0	2.3	12-1/2	317	2-1/2	64
SZER4006G7TF3	Thumb-Flip Throttle	1.5	3/8	10	7200	5.0	2.3	12-1/2	317	2-1/2	64
SZER4006G7TF4	Thumb-Flip Throttle	1.5	1/2	13	7200	5.0	2.3	12-1/2	317	2-1/2	64

General:

Air Inlet Size: 3/8" NPT

Recommended Hose Size: 3/8" (10 mm)

Performance rated @ 90 psig (6.2 bar) air pressure

Tools available with BSPT air inlet upon request

Standard Equipment:

Parts list, Safety and Instruction manual

Safety throttle action

Due to a variety of jobs and applications, Routers are not supplied with any types of cutting tool. Please contact Sioux Tools, Inc. or your local distributor for router information.



SAFETY Precaution: Read and follow all safety and operating instructions.

WARNING: Face & eye protection must be worn while operating power tools, per ANSI B186.1

MOUNTABLE MOTOR UNITS

Performance:

Power: 2.0 - 3.5 horsepower

Collet Capacity: 1/4" (6 mm) – 1/2" (13 mm)

Speed: 6000 rpm - 16,000 rpm



SZER4002

Model Number	Handle	Horsepower	Collet Capacity		Speed rpm	Weight		Length		Diameter	
			in.	mm		lb	kg	in.	mm	in.	mm
SZER40021	Mountable motor	3.5	1/4	6	10,000	7.0	3.2	8-7/16	214	3-7/8	98
SZER40023	Mountable motor	3.5	3/8	10	10,000	7.0	3.2	8-7/16	214	3-7/8	98
SZER40024	Mountable motor	3.5	1/2	13	10,000	7.0	3.2	8-7/16	214	3-7/8	98
SZER4002G91	Mountable motor	3.5	1/4	6	9000	7.0	3.2	8-7/16	214	3-7/8	98
SZER4002G93	Mountable motor	3.5	3/8	10	9000	7.0	3.2	8-7/16	214	3-7/8	98
SZER4002G94	Mountable motor	3.5	1/2	13	9000	7.0	3.2	8-7/16	214	3-7/8	98
SZER4002G61	Mountable motor	3.5	1/4	6	6000	7.0	3.2	8-7/16	214	3-7/8	98
SZER4002G63	Mountable motor	3.5	3/8	10	6000	7.0	3.2	8-7/16	214	3-7/8	98
SZER4002G64	Mountable motor	3.5	1/2	13	6000	7.0	3.2	8-7/16	214	3-7/8	98
SZER40041	Mountable motor	2.0	1/4	6	16,000	7.0	3.2	8-1/2	216	3-7/8	98
SZER40043	Mountable motor	2.0	3/8	10	16,000	7.0	3.2	8-1/2	216	3-7/8	98
SZER40044	Mountable motor	2.0	1/2	13	16,000	7.0	3.2	8-1/2	216	3-7/8	98

General:

Air Inlet Size: 1/2" NPT

Recommended Hose Size: 1/2" (13 mm)

Performance rated @ 90 psig (6.2 bar) air pressure

Tools available with BSPT air inlet upon request

Standard Equipment:

Parts list, Safety and Instruction manual

Safety throttle action

Due to a variety of jobs and applications, Routers are not supplied with any types of cutting tool.
Please contact Sioux Tools, Inc. or your local distributor for router information.

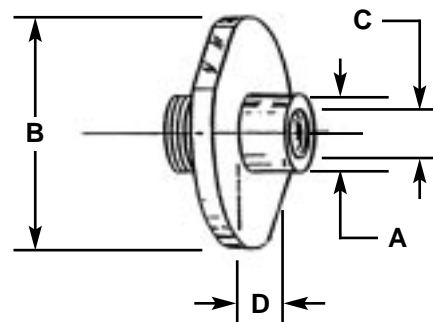
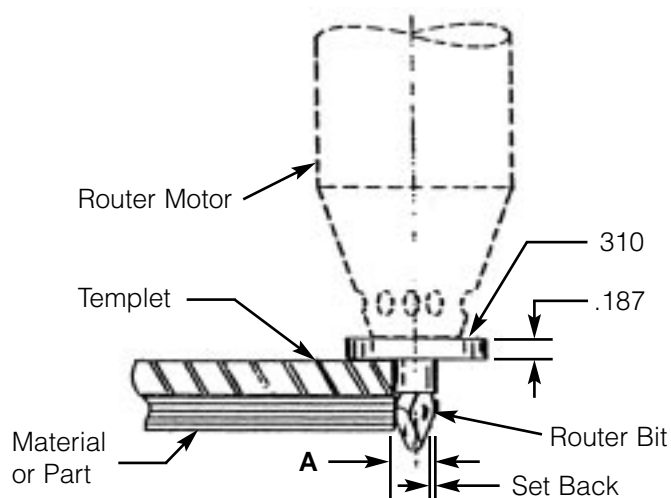
SAFETY Precaution: Read and follow all safety and operating instructions.

WARNING: Face & eye protection must be worn while operating power tools, per ANSI B186.1



COLLAR GUIDE NOMENCLATURE

- A Pilot Diameter
- B Flange Diameter
- C Clearance Hole
- D Pilot Length



"A" Pilot Diameter Required
Bit diameter + (Set Back x 2) = "A"

Set Back Formula

$$\frac{A - \text{Bit Diameter}}{2}$$



SAFETY Precaution: Read and follow all safety and operating instructions.
WARNING: Face & eye protection must be worn while operating power tools, per ANSI B186.1

Pneumatic Saws and Trim Shears

Principle of Operation for Saws:

Air powered saws SZES100 and SZES101 utilize a geared motor with a mounting spindle extending from the front of the motor.

Depressing lever throttle on handle allows for the operation of the motor to turn the blade surrounded by a protective guard

The SZES600 and SZES600G utilize geared motors and governed motors.

Saw selection guide:

What type of Material?

What is the material thickness?

What type of saw blades?

Are there any blade restrictions? (e.g. maximum rpm rating)

Are there any special considerations?

Principle of Operation for Trim Shears:

Trim shears are pneumatic motors geared down for speed control, determined by the application material and thickness.

Lever or trigger control operates the motor thus turning the motor speed at the chosen rpm. The worm drive shaft extends from the motor, driving a two-wheel assembly mounted to the front of the tool.

One wheel is serrated to grip the material, while the other wheel cuts the material.

Trim Shear selection guide:

What type of material?

What is the material thickness?

Are there any clearance problems?

Are there any special considerations?

SAFETY Precaution: Read and follow all safety and operating instructions.

WARNING: Face & eye protection must be worn while operating power tools, per ANSI B186.1



PNEUMATIC SAWS

Performance:

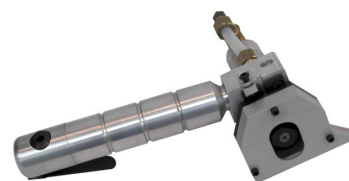
Blade Capacity: 2.0" (51 mm)

Speed: 2800 - 20,000

Cutting Capacity: 1/4" (6 mm)

Features:

Non-ferrous and fiberglass



SZES101



SZES100

Model Number	Blade Capacity		Speed rpm	Cutting Capacity Non-ferrous & Fiberglass		Length		Weight	
	in.	mm		in.	mm	in.	mm	lb	kg
SZES100	2	51	2800	1/4	6 thick	8.0	203	2-1/2	1.1
SZES101	2	51	20,000	1/4	6 thick	8.0	203	2-1/2	1.1

General:

Air Inlet Size: 1/4" NPT

Recommended Hose Size: 3/8" (10 mm)

Performance rated @ 90 psig (6.2 bar) air pressure

Tools available with BSPT air inlet upon request

Standard Equipment:

Parts list, Safety and Instruction manual

Safety throttle action

Performance:

Power: 1.5 hp

Blade Capacity: 4.0" (102 mm)

Speed: 6000 - 16,000



SZES600

Model Number	Horsepower	Blade Capacity		Speed rpm	Length		Weight		Diameter	
		in.	mm		in.	mm	lb	kg	in.	mm
SZES600	1.5	4	102	16,000	13	330	6	2.7	2-1/2	64
SZES600G12	1.5	4	102	12,000	13	330	6	2.7	2-1/2	64
SZES600G9	1.5	4	102	9000	13	330	6	2.7	2-1/2	64
SZES600G7	1.5	4	102	7200	13	330	6	2.7	2-1/2	64
SZES600G6	1.5	4	102	6000	13	330	6	2.7	2-1/2	64

General:

Air Inlet Size: 1/4" NPT

Recommended Hose Size: 3/8" (10 mm)

Performance rated @ 90 psig (6.2 bar) air pressure

Tools available with BSPT air inlet upon request

Standard Equipment:

Parts list, Safety and Instruction manual

Safety throttle action



SAFETY Precaution: Read and follow all safety and operating instructions.

WARNING: Face & eye protection must be worn while operating power tools, per ANSI B186.1

TRIM SHEARS

Performance:

Capacity/Steel: 10 GA. - 14 GA.

Throat Capacity: 1-1/4" (32 mm) - 2-1/8" (54 mm)

Features:

Straight or Pistol Grip handle



SZEAS10PR



SZEAS7S

Model Number	Handle	Cap./Steel	Throat Capacity		ft/minute		Weight	
			in.	mm	m.	min.	lb	kg
SZEAS7S	Straight	13 GA.	1-1/4	32	4	13.12	5.0	2.3
SZEAS7P	Pistol Grip	13 GA.	1-1/4	32	4	13.12	5.0	2.3
SZEAS8S	Straight	14 GA.	2-1/4	57	4	13.12	5-1/2	2.5
SZEAS8P	Pistol Grip	14 GA.	2-1/4	57	4	13.12	5-1/2	2.5
SZEAS9P	Pistol Grip	10 GA.	2.0	51	4	13.12	12.0	5.4
SZEAS10PR	Pistol Grip	1/8" (Stainless)	2-1/8	54	4	13.12	18.0	8.0

General:

Air Inlet Size: 1/4" NPT

Recommended Hose Size: 3/8" (10 mm)

Performance rated @ 90 psig (6.2 bar) air pressure

Tools available with BSPT air inlet upon request

Standard Equipment:

Parts list, Safety and Instruction manual

Safety throttle action

SAFETY Precaution: Read and follow all safety and operating instructions.

WARNING: Face & eye protection must be worn while operating power tools, per ANSI B186.1



Pneumatic Track Mounted Saws and Routers

Principle of Operation:

Air powered track saw and routers are dual motor operated, one to feed the unit along a guided path, the other to fulfill the desired application (routing or cutting).

Activation of the units can be by lever, thumb throttles, or roll throttle.

Track Mounted Saw and Router selection guide:

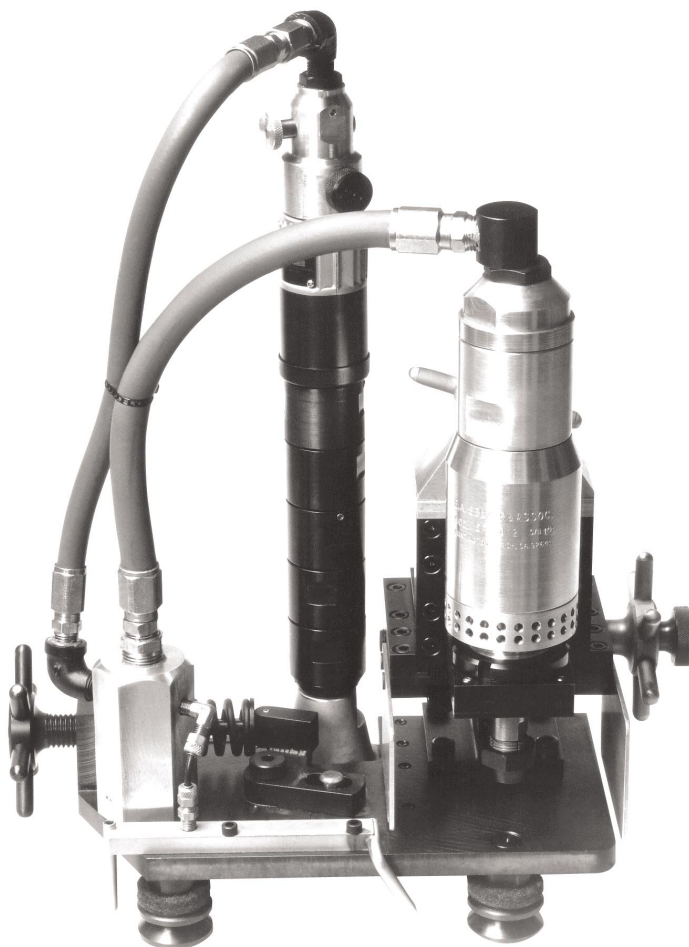
What type of material?

What type of cutter?

What is the material thickness?

What are the track specifications?

Are there any special considerations?



These tools are designed for track mounted trimming and routing. They are built to order to meet special requirements.



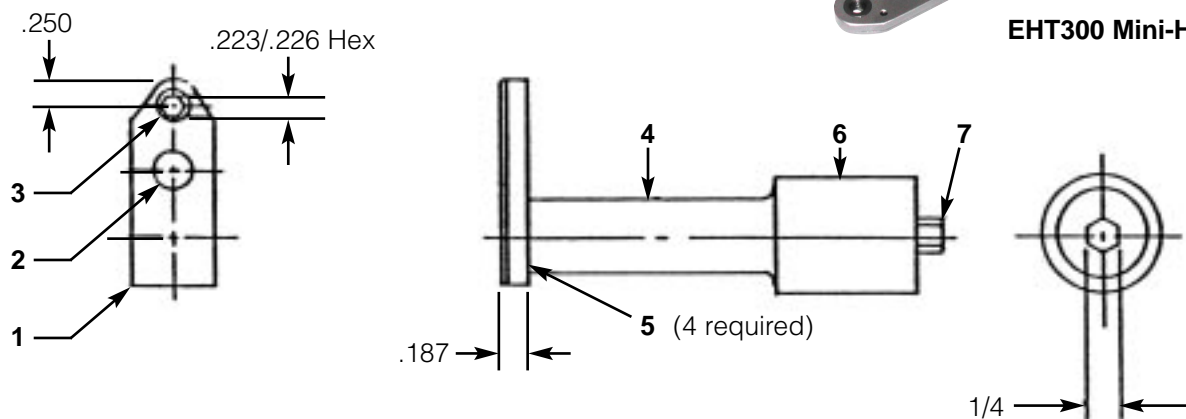
SAFETY Precaution: Read and follow all safety and operating instructions.

WARNING: Face & eye protection must be worn while operating power tools, per ANSI B186.1

Item Number	Part Number	Description	Qty. Req.
1	EHT300-1	Cover Plate	1
2	EHT300-2	Idler Gear	1
3	EHT300-3	Spindle Gear	1
4	EHT300-4	Housing Assembly	1
5	EHT300-5	Soc. Head Screw	4
6	EHT300-6	Set Screw	1
7	EHT300-7	Drive Shaft	1



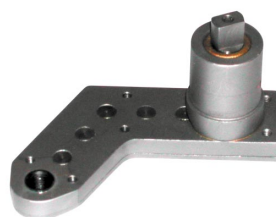
EHT300 Mini-Head



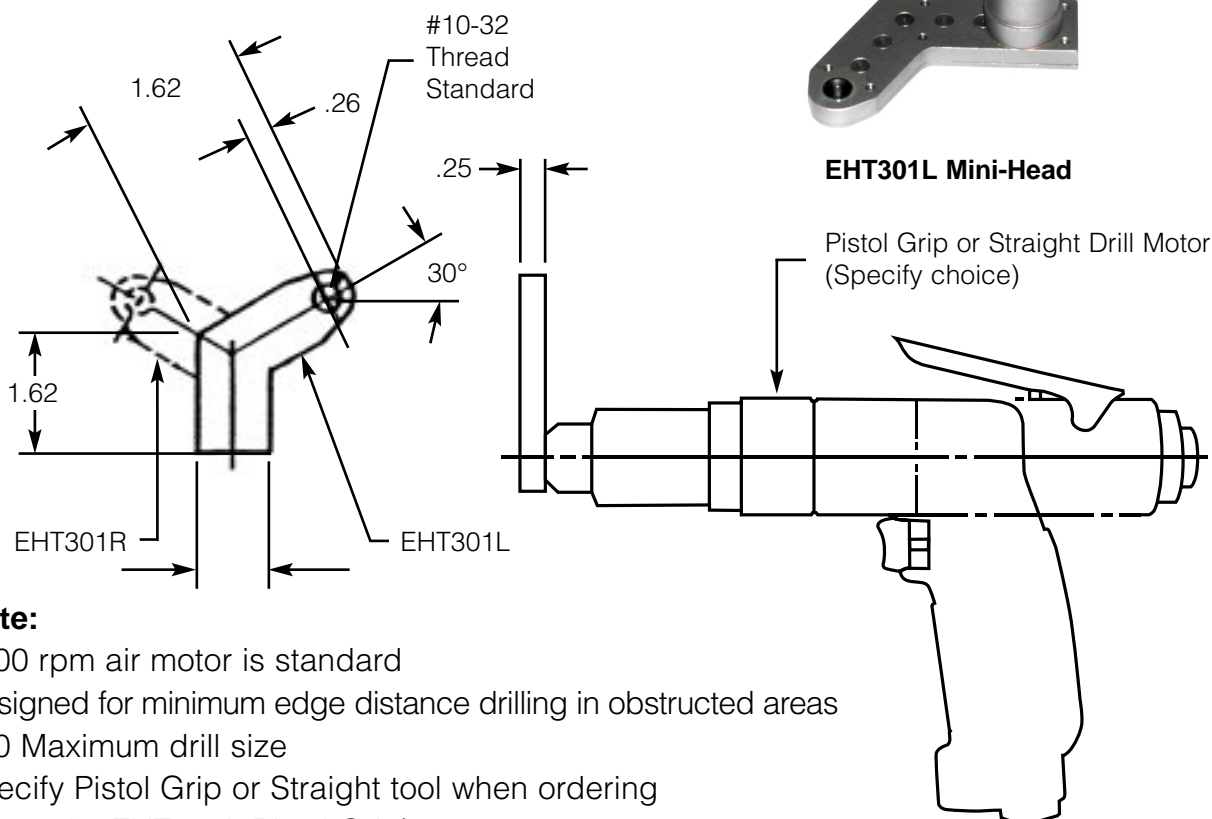
Note:

Designed for minimum profile and edge distance nutrunning.

Can be supplied with #10-32 spindle for light duty drilling applications.



EHT301L Mini-Head



Note:

2700 rpm air motor is standard

Designed for minimum edge distance drilling in obstructed areas

#10 Maximum drill size

Specify Pistol Grip or Straight tool when ordering

(Example: EHT301L Pistol Grip)

SAFETY Precaution: Read and follow all safety and operating instructions.

WARNING: Face & eye protection must be worn while operating power tools, per ANSI B186.1





SAFETY Precaution: Read and follow all safety and operating instructions.
WARNING: Face & eye protection must be worn while operating power tools, per ANSI B186.1



E A SELZER



AEROSPACE

**SIoux
TOOLS INC.**



250 Snap-on Drive
P.O. Box 1596
Murphy, North Carolina USA 28906
PH: 828.835.9765
FAX: 828.835.9685
TOLL FREE: 866.259.7291
TOLL FREE FAX: 800.722.7236

Benelux
Tel.: (N) 31 (0) 20 568 26 63
(B) 32 (0) 14 23 19 67
Fax: (N) 31 (0) 20 568 26 60
(B) 31 (0) 14 23 26 27
e-mail: snap@snap-on.nl

Latin America
Tel.: 305-271-0944
Fax: 305-271-7152
e-mail:
latinafrica.caribbean@snapon.com

Germany
Tel.: 49 2104 9509-0
Fax: 49 2104 9509-99
e-mail:
snapon.industrial@snapon.com

Italy
Tel.: 00 39 02 66 04 53 70
Fax: 00 39 02 61 29 78 15
e-mail: indus.italia@snapon.com

United Kingdom
Tel.: 44 (0) 1536-413904
Fax: 44 (0) 1536-413874
e-mail: industrialuk@snapon.com

Asia
Tel.: 65-6451-5570
Fax: 65-6451-5574
email: esales.sg@snapon.com

Distributed By: _____



FORM# ZML0072
PRINTED IN USA
9/03 5M

www.siouxtools.com