



WIRELESS DATA COMMUNICATION CORDLESS ASSEMBLY TOOLS

FROM THE GLOBAL LEADER IN ADVANCED CORDLESS TECHNOLOGIES...

PRODUCTION TOOLS TO ENHANCE THE QUALITY OF YOUR FASTENING ENVIRONMENT

(((Rundown Rotations/Counts)))

(((Angle & Torque Values)))

(((Time / Date / ID)))

(((OK-NOK Qualification)))

Low Voltage
Shut Off Sensor

Long-Life Clutch for High Repeatability

"Quick Change"
1/4" Hex Shank Chuck

Auto-Stop
Fastening Function

Built-in L.E.D. Light

Makita-Built Brushless
DC Motor

Torque
Adjusting System

Slim-Line
Anti-Slip Dimpled Grip

L.E.D. Operator Signal
and Audible Alarm

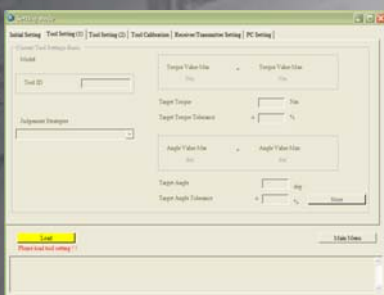


14.4V 3.0Ah
LITHIUM-ION

SMART TOOLS PROVIDING QUALITY ASSURANCES

BASIC FEATURES:

- Wireless Communication of Torque, Angle and Rotation Values
- Extreme Accuracy and Long-life Reliability
- Traceability through Communication of Individual Fastening Characteristics
- Confirmation of Individual Parameter Achievement
- Valuable Tool in Troubleshooting Manufacturing Fastening Processes
- Provides Theft Deterrence via Disabling Function



Product Offering Snapshot:

Models	BFT041RZ	BFT082RZ	BFT124RZ	BFL201RZ	BFL301RZ	BFL402RZ
Torque Range (Hard Joint)	1-4 Nm	4-8 Nm	5-12 Nm	10-20 Nm	16-30 Nm	25-40 Nm
No Load Speed (RPM)	800	860	600	360	260	200



WIRELESS DATA COMMUNICATION CORDLESS ASSEMBLY TOOLS



Receiver Connectivity

24 Volt Input/Output

- POKAYOKE Systems
- Relay and Transistor Connections:
 - Potential signal connectivity
 - Sequencer connectivity

RS-232C Input/Output

- Direct to PC Connection
 - Tool Parameters Programmed via Software
 - Individual Fastening Data Capture within Assigned Data Files

RS-232C Input/Output

- Direct to PLC Connection
 - Tool Parameters Programmed via PLC
 - Interact with Plant Data Platform via PLC Ethernet Connection

Tool Recognition:

- Fastening Torque Values
 - Fastening Angle Values
 - Rundown Rotations
 - Tool ID Recognition
 - Time/Date Stamp
 - OK-NOK Parameter Achievement
 - Batch Achievement
- (BFT041RZ does not recognize torque, angle and rotation figures)

Programming Interactivity:

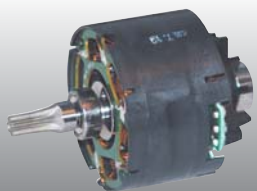
- Torque Value Tolerance Range
 - Angle Value Tolerance Range
 - Rundown Rotation Min/Max Settings
 - Tool Lock Down Mode
 - Tool Brake Options
 - Soft Start Adjustment
 - Calibration Ability
 - Batch Management (PLC-Based)
- (BFT041RZ does not offer torque, angle and calibration functions)

Expanded Specifications:

Models	BFT041RZ	BFT082RZ	BFT124RZ	BFL201RZ	BFL301RZ	BFL402RZ
Torque Range	1-4 Nm	4-8 Nm	5-12 Nm	10-20 Nm	16-30 Nm	25-40 Nm
No Load Speed (RPM)	800	860	600	360	260	200
Voltage	3.0Ah, 14.4V	3.0Ah, 14.4V	3.0Ah, 14.4V	3.0Ah, 14.4V	3.0Ah, 14.4V	3.0Ah, 14.4V
Battery Type	Lithium-Ion	Lithium-Ion	Lithium-Ion	Lithium-Ion	Lithium-Ion	Lithium-Ion
Weight w/Battery	3.3 lbs	3.3 lbs	3.3 lbs	3.75 lbs	4.2 lbs	4.4 lbs
Drive Platform	1/4" Hex	1/4" Hex	1/4" Hex	3/8" Square	3/8" Square	3/8" Square
Tool Recognition	OK-NOK Time/Date/Tool ID Rundown Rotations, Rundown Counts	All Parameters	All Parameters	All Parameters	All Parameters	All Parameters
Motor Design	**All Makita Wireless System Tools Utilize a Makita-Built, Brushless Motor**					

Makita Assembly Tools Offers You the Highest Quality Cordless Platform Available

BRUSHLESS MOTOR



Makita-built motor technologies. Provide higher speeds and advanced monitoring.

LITHIUM-ION



High productivity with reduced weight. Very low self-discharge rates.

BATTERY CHARGER



Intelligent charging continuously monitors and controls temperature and current flow to maximize charge potential