

Lineman's Products

LITTLE MULE[®]

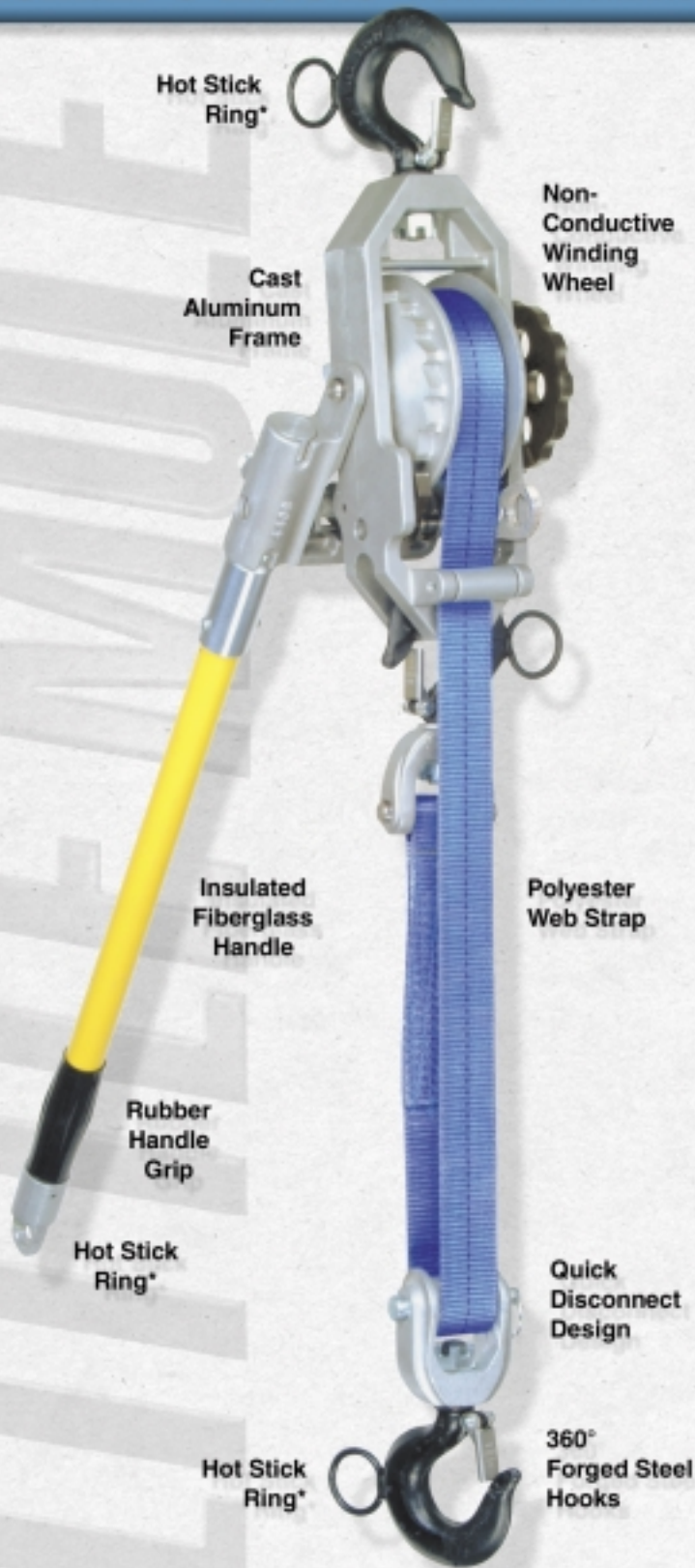


COFFING[®]
HOISTS

Lineman's Hoists • Cable Hoists • Ratchet Lever Hoists • Wire Grips

Lineman's Hoists

Exclusive Features from the Reliable Leader



Extra Measure of Reliability

- Fiberglass Handle and Polyester Webbing— Provides added nonconductive material when using proper hot line handling techniques.
- Overload Feature— Solid fiberglass handle, with replaceable tips, bends to alert the operator of a possible overload.
- Hooks and Gate Latches— All hooks swivel 360° and are equipped with latches. Optional hooks with gate latches can also be added. See models on following page.
- Positive Load Holding in All Environments — Double interlocking pawls assures one pawl is engaged at all times. Dual pawl springs provide unsurpassed reliability.
- Meets or exceeds minimum 4:1 design factor and all requirements of ASME/ANSI Standard B-30.21. All units tested at 125% of rated load.

Lightweight and Rugged

- Durable and Portable— Special cast aluminum frames.
- Corrosion Resistant— Stainless steel springs, drum shafts, and plated roller shafts.
- Reduced Wear— All rotating shafts are mounted on bronze bushings.

Easy to Operate

- Self-Storing Web Drum— Provides compact operation.
- Fast Webbing Take-up— Non-conductive winding wheel provided for quick take-up or positioning of slack webbing.
- Easy Load Positioning— Utilizes a double pawl system with multiple pawl stops for precise load adjustment.
- Open Construction— Allows for easy cleaning and inspection.
- Easily Removed Sheave Block— Utilizing a quick disconnect design. Converts hoist for single line use.

⚠ WARNING

Overloading and Improper Use Can Result in Injury.
See Warning on Back Cover.

* Standard on DB and DHB models

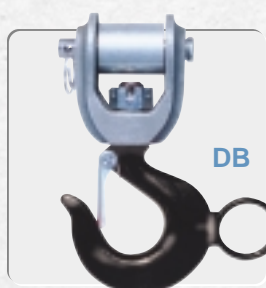
Choice of Hooks

Make Your Application Efficient and Effective



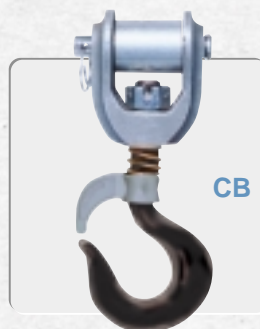
Standard Hook

Forged steel hooks provide lasting strength and durability. Hooks will bend open under extreme overload situations. Latches are standard.



Hot Stick Hook

Hot stick hooks have a welded ring for use with holding sticks. Latches are standard.



Swivel Gate Hook

Bullard-type, swivel gate latch provides positive locking action for secure load holding in all environments.



Hot Stick Hook & Gate Latch

Hot stick gate latch models have rings on the latch and the hook for use on energized lines. Holding sticks easily maneuver the latch and hooks.

SPECIFICATIONS

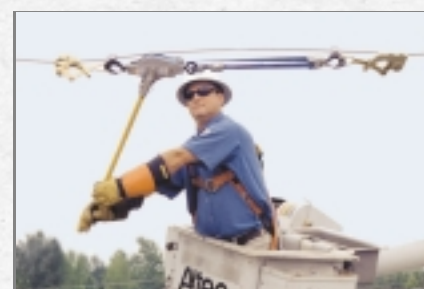
Lineman's Hoists • Single & Double Line • 1500 - 4000 Lbs.

Model Number	SINGLE LINE			DOUBLE LINE			Web Strap Length (Ft.)	Handle Length (In.)	Ship Weight (Lbs.)
	Capacity (Lbs.)	Lift (Ft.)	Hook to Hook (Min.) (In.)	Capacity (Lbs.)	Lift (Ft.)	Hook to Hook (Min.) (in.)			
322B	1500	14	20	3000	7	23	15	24	12 ¹ / ₂
322DB	1500	14	20	3000	7	23	15	24	13
322CB	1500	14	23	3000	7	27 ¹ / ₂	15	24	12 ¹ / ₂
322DHB	1500	14	22	3000	7	26	15	24	13
344B	2000	11	20	4000	5 ¹ / ₂	23	12	30	12 ¹ / ₂
344DB	2000	11	20	4000	5 ¹ / ₂	23	12	30	13
344CB	2000	11	23	4000	5 ¹ / ₂	27 ¹ / ₂	12	30	12 ¹ / ₂
344DHB	2000	11	22	4000	5 ¹ / ₂	26	12	30	13

DB Includes Hot Stick Rings on All Hooks and Control Surfaces.

CB Includes Swivel-Type Gate on All Hooks.

DHB Includes Hot Stick-Type Gate Latch on All Hooks as well as Hot Stick Rings on All Hooks and Control Surfaces.





Lineman's Hoists

Ease of Operation
Strength, Precise Control

Series 2000 — Unsurpassed Load Spotting

- Precision Load Control and Spotting — Achieved with friction brake design and fine-tooth pawl. Friction brake allows “micro-inching” when lowering loads.
- Reduced Handle Stroke and 360° Handle Rotation — Allows operator to work in tight spaces.

Extra Measure of Reliability

- Hook Gate Latches — See models below and descriptions on page 3.
- Meets or exceeds minimum 4:1 design factor and all requirements of ASME/ANSI Standard B-30.21. All units tested at 125% of rated load.

SPECIFICATIONS

Series 2000 • Single & Double Line
1000 & 2000 Lbs.

Model Number	SINGLE LINE			DOUBLE LINE			Web Strap Length (Ft.)	Handle Length (In.)	Ship Weight (Lbs.)
	Capacity (Lbs.)	Lift (Ft.)	Hook to Hook (Min.) (In.)	Capacity (Lbs.)	Lift (Ft.)	Hook to Hook (Min.) (in.)			
2000A	1000	11	17½	2000	5	22	12	20	13¼
* 2000DA	1000	11	17½	2000	5	22	12	20	13¼
** 2000CA	1000	11	20½	2000	5	26½	12	20	13¼
*** 200DHA	1000	11	19½	2000	5	25	12	20	13¼

Series 6000 — Strongest Web Strap Puller Available

- Durable and Rugged — Extra large superior grade webbing with double side plate housing design.
- Positive Load Holding in All Environments — Provided by double interlocking pawl mechanism.
- Extremely Low Handle Effort — Provided by special 4:1 gear reduction.

Extra Measure of Reliability

- Gate Latches — See models below and descriptions on page 3.
- Added Webbing Protection — Wire-form strap guide and special bottom block roller guide web smoothly on to drum.
- Meets or exceeds minimum 4:1 design factor and all requirements of ASME/ANSI Standard B-30.21. All units tested at 125% of rated load.

SPECIFICATIONS

Series 6000 Lineman's Hoist
Double Line - 6000 Lbs.

Model Number	SINGLE LINE			DOUBLE LINE			Web Strap Length (Ft.)	Handle Length (In.)	Ship Weight (Lbs.)
	Capacity (Lbs.)	Lift (Ft.)	Hook to Hook (Min.) (In.)	Capacity (Lbs.)	Lift (Ft.)	Hook to Hook (Min.) (in.)			
6000A	NA	—	—	6000	5	27	12	30	26½
* 6000DA	NA	—	—	6000	5	27	12	30	26½
** 6000CA	NA	—	—	6000	5	31½	12	30	26½

* Includes Hot Stick Rings on All Hooks, Control Surfaces and Quick Disconnect Shaft.

** Includes Swivel-Type Gate on All Hooks.

*** Includes Hot Stick-Type Gate Latch on All Hooks as well as Hot Stick Rings on All Hooks, Control Surfaces and Quick Disconnect Shaft.

Cable Hoists

Designed for Reliability, Durability and Versatility

Engineered for Reliable Operation

- Handle Designed for Overload Protection—Handle bends to warn of hazardous condition and prevent dangerous overload.
- Hooks with Latches—360° swiveling hooks equipped with latches for positive load engagement.
- Positive Load Holding in All Environments—Double interlocking pawl mechanism assures one pawl is engaged at all times.
- Meets or exceeds minimum 4:1 design factor and all requirements of ASME/ANSI Standard B-30.21. All units tested at 125% of rated load.

Portable and Durable

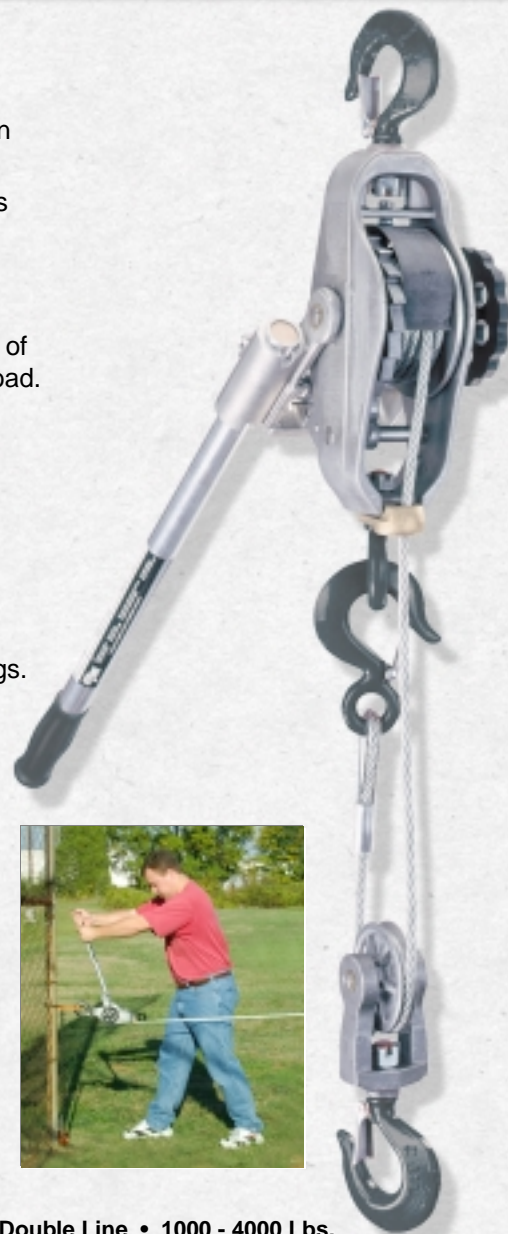
- Lightweight and Rugged—Special cast aluminum and zinc alloy housings.
- Heavy Duty Cable—Utilizes preformed and galvanized 7 x 19 (133 strand) extra flexible aircraft cable.
- Corrosion Resistant—All stainless steel springs and shafts.
- Reduced Wear—All rotating shafts are mounted on bronze bushings.

Easy to Operate

- Self-Storing Cable Drum—Provides compact operation.
- Easy Load Positioning—Utilizes a double pawl system with multiple pawl stops for precise load adjustment.
- Fast Cable Take-Up—Winding wheel provided for quick take-up or positioning of cable.
- Open Construction—Allows for easy cleaning and inspection.

Special Model Features

- 430CDPA equipped with oversized slip hooks—Ideal for opening and closing boxcar doors.
- Stainless Steel Cable Available—Suitable for marine environments.



SPECIFICATIONS

Single & Double Line • 1000 - 4000 Lbs.

Model Number	SINGLE LINE			DOUBLE LINE			Cable Dia. x Length (In.) (Ft.)	Ship Weight (Lbs.)
	Capacity (Lbs.)	Lift (Ft.)	Hook to Hook (Min.) (In.)	Capacity (Lbs.)	Lift (Ft.)	Hook to Hook (Min.) (in.)		
115SA	1000	13 ³ / ₄	19	—	—	—	3/16 x 16	7 ³ / ₄
115DA	1000	13 ¹ / ₂	21	2000	6 ¹ / ₂	27	3/16 x 16	9 ¹ / ₂
505NA	1500	13	21	—	—	—	1/4 x 15	8 ¹ / ₂
202WNA	1500	12 ¹ / ₂	21	3000	6	27	1/4 x 15	10 ¹ / ₂
434WNA	1500	21 ¹ / ₂	22 ¹ / ₂	3000	10 ¹ / ₄	28 ¹ / ₂	1/4 x 24	12 ¹ / ₄
430CDPA	1500	21 ¹ / ₂	25	3000	10 ¹ / ₄	33 ¹ / ₂	1/4 x 24	15
404WNA	2000	12 ¹ / ₂	22 ¹ / ₂	4000	6	28 ¹ / ₂	9/32 x 15	12 ¹ / ₂

⚠ WARNING

Overloading and Improper Use Can Result in Injury. See Warning on Back Cover.

RA Models The Industry Standard Dual Ratchet and Pawl Design



Designed For Reliability

- Positive Load Holding In All Environments—Double interlocking pawl mechanism assures one pawl is always engaged with the ratchet during lifting or lowering operations.
- Swivel Hooks—360° swiveling hooks are equipped with latches for positive load engagement.
- Reversible Handle—Handle operates from either side and will not ratchet or accidentally free chain when lowering a load.
- Meets or exceeds minimum 4:1 design factor and all requirements of ASME/ANSI Standard B-30.21. All units tested at 125% of rated load.

Durable, Lightweight, and Easy To Operate

- Built To Last—Body and handle constructed of special lightweight alloy providing durability for dependable service and easy portability.
- Corrosion Resistant—Aluminum alloy body is corrosion resistant and keeps foreign matter from damaging internal components.
- Free Chain Mechanism—Allows easy positioning and set-up.
- Open Body Construction—Permits easy inspection and maintenance of suspension hook assembly.

Special Options

- Special Lifts—Standard 5 ft. lift. Longer lifts available
- Hooks and Chain—Bullard hooks, bronze hooks, and zinc-plated chain and hooks are available — consult factory.

⚠WARNING

Overloading and Improper Use Can Result in Injury.
See Warning on Back Cover.



SPECIFICATIONS

1500 - 12,000 Lbs.

Model Number	Capacity (Lbs.) †	Lift (In.)	Hook to Hook (Min.) (In.)	Handle Length (In.)	Handle Pull @ Rated Load (Lbs.)	Ship Weight (Lbs.)
RA-15	1500	60	12½	20½	59	14
RA-20	2000	60	12½	20½	79	14
RA-15-2*	3000	60	17¼	20½	60	21
RA-30	3000	60	13¾	20½	82	26
RA-40	4000	60	13¾	20½	110	26
RA-30-2*	6000	60	17¼	20½	93	35
RA-30-3	9000	60	22	20½	96	53
RA-30-4	12000	60	22	20½	97	63

* Double-chain model.

G Models Versatile and Rugged for Tensioning, Lifting or Pulling

Single or Double-Locking Pawl

- Single-Pawl Hoist—Adapts to all types of work where a full stroke of the handle is permitted.
- Double-Pawl Hoist—Needs only a half-stroke of the lever and is ideal for working in close quarters.
- Double-Pawl Models—Available up to and including 3-ton model (model numbers end in “1”).

Rugged and Durable

- Malleable Iron Housings—Stand up to years of rugged use.
- Key Internal Components—Made of heat-treated alloy steel for superior strength and durability.
- Riveted Construction—Makes the unit tamper resistant.

Easy to Operate

- Reversible Handle—Operates from either side.
- Free Chain Feature—Allows easy positioning and set-up. Will not free chain under load.
- Special Snap Hook and Link—Allows conversion of multiple chain units to next smaller capacity to give longer lift and faster operation.



Extra Measure of Reliability

- Handle Stops—Prevents handle from spinning, in case operator removes hand from handle during operation.
- Swivel Hooks—360° swiveling hooks are equipped with safety latches for positive load engagement.
- Meets or exceeds minimum 4:1 design factor and all requirements of ASME/ANSI Standard B-30.21. All units tested at 125% of rated load.



SPECIFICATIONS

1500 - 30,000 Lbs.

Model Number †	Capacity (Lbs.)	Lift (In.)	Minimum Dist. Between Hooks (In.)	Handle Length (In.)	Minimum Increment (In.)	Average Handle Effort (Lbs.)	Net Weight (Lbs.)
AG/AGI	1500	56 ¹ / ₂	13	18 ³ / ₄	.624/.313	56	14
ATG/ATGI	3000	57	15	18 ³ / ₄	.313/.156	60	17
FG/FGI	3000	56 ¹ / ₂	16	27 ⁵ / ₈	1.000/.500	116	25
FTG/FTGI	6000	57	17 ⁵ / ₈	27 ⁵ / ₈	.500/.250	120	34
ZG-4¹/₂	9000	53	25	33 ⁵ / ₈	.333	124	49
ZG-6	12000	53	25	33 ⁵ / ₈	.250	124	59
WG-9	18000	60	30	33 ⁵ / ₈	.200	124	120
WG-11	22000	60	30	33 ⁵ / ₈	.167	124	130
WG-13	26000	60	30	33 ⁵ / ₈	.143	124	140
WG-15	30000	60	30	33 ⁵ / ₈	.125	124	150





Wire Grips

Get the Job Done — Efficiently and Economically

Easy to Use

- Versatility—All models are rated for a variety of wire sizes and types, so fewer grip changes are required.
- No Lock-Ups—Grips open easily and release instantly to quickly insert or remove wire.
- Large Handle Eye Opening—Accepts standard hooks and easily attaches to tackle blocks.
- Choice of Design—Spring-loaded or non-spring-loaded models available.

Rugged and Portable

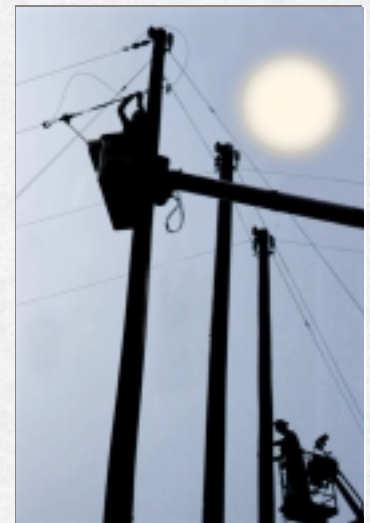
- Forged Steel Construction—Durable yet lightweight.
- Yellow Chromate Finish—Protects components from rust and corrosion.

Hot Line Models

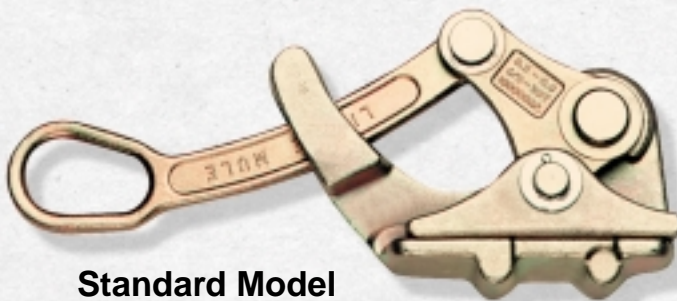
- Spring-Loaded Gate—Standard on all hot line models. Lineman can use a holding stick to open the gate and place the grip on the wire. When released, the gate closes over the wire and prevents the grip from falling off the wire.
- Locking Mechanism—Notched handle on spring-loaded models locks grip in open position for placement on or removal from wire, then releases instantly.

Jaw Options

- Replacement Jaw—Machined with large, aggressive teeth. Available on 5000 and 10,000 lb. models—suitable for applications requiring exclusive use on EHS cable or guy strand.



Large Eye Opening



Standard Model (Spring-Loaded)

Riveted Construction

Notched Handle



Hot Line Model (Spring-Loaded)

Gate Plate



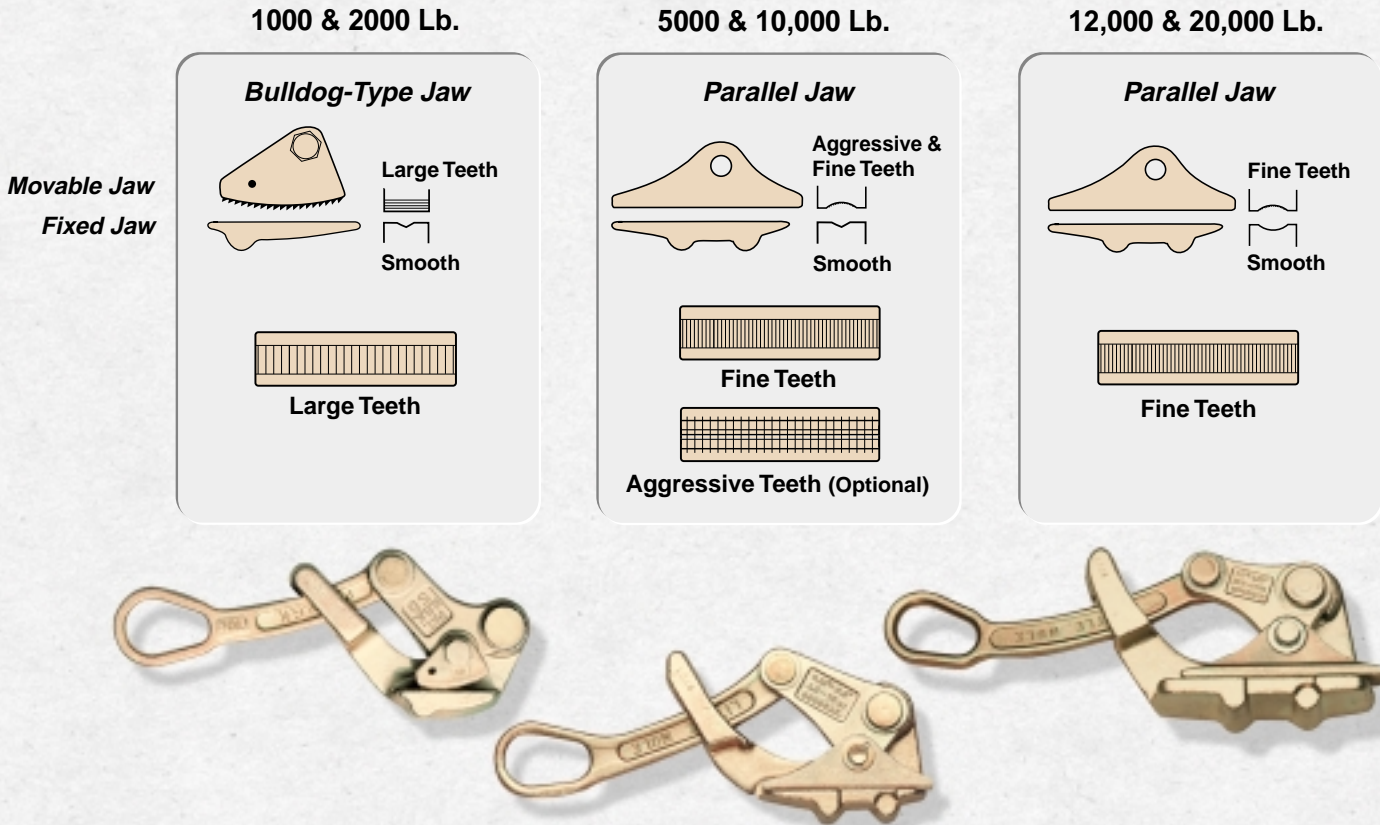
Hot Line Model (Non-Spring-Loaded)

Gate Plate

WARNING

Overloading and Improper Use Can Result in Injury. See Warning on Back Cover.

Jaw and Teeth Configurations



SPECIFICATIONS

Standard and Hot Line Models • 1000 - 20,000 Lbs.

Model Number	Type	Capacity (Lbs.)	Net Weight (Lbs.)	Wire Size				Handle Eye Opening (In.)
				Minimum		Maximum		
				Size (In.)	Gauge	Size (In.)	Gauge	
* LMG1000	Standard Grip Spring Loaded	1000	1/2	.04	18AWG	.394	1/0AWG	.625 dia.
* LMG2000		2000	1	.109	8AWG	.594	4/0AWG	1 x 1 1/2
LMG4500		5000	3 1/4	.18	6AWG	.60	4/0AWG	1 1/4 x 1 3/4
LMG4600		10000	4 1/2	.30	1AWG	.80	450MCM	1 1/4 x 1 3/4
LMG4800		12000	8	.70	397MCM	1.25	1130MCM	1 1/4 x 1 3/4
LMG4700		20000	21	.70	397MCM	1.25	1130MCM	2 1/2 x 3 1/2
LMG4501	Hot Line Grip Spring Loaded Notched Handle	5000	3 1/4	.18	6AWG	.60	4/0AWG	1 1/4 x 1 3/4
LMG4601		10000	4 1/2	.30	1AWG	.80	450MCM	1 1/4 x 1 3/4
LMG4801		12000	8	.70	397MCM	1.25	1130MCM	1 1/4 x 1 3/4
LMG4701		20000	21	.70	397MCM	1.25	1130MCM	2 1/2 x 3 1/2
LMG4502	Hot Line Grip No Spring No Notch	5000	3 1/4	.18	6AWG	.60	4/0AWG	1 1/4 x 1 3/4
LMG4602		10000	4 1/2	.30	1AWG	.80	450MCM	1 1/4 x 1 3/4
LMG4802		12000	8	.70	397MCM	1.25	1130MCM	1 1/4 x 1 3/4
LMG4702		20000	21	.70	397MCM	1.25	1130MCM	2 1/2 x 3 1/2

* Note: 1000 and 2000 Lb. Models Have Bulldog-Type Jaw. All Other Models Have Parallel Jaw.

Get a GRIP!



LMSB Models Stamped Steel — Versatile Performer



Rugged and Lightweight

- Impact Resistant Stamped Steel Housing—Withstands years of rigorous use.
- Compact Design—Extremely portable and easy to rig.
- Longer Chain Life—Through-hardened load chain provides high strength and resists wear.

Easy To Operate

- Low Handle Effort—Provided by double reduction gearing and short handle with cushioned, ergonomic grip. The result is easy operation with minimal handle effort.
- 360° Rotating Handle—Provides versatile rigging options when used in confined spaces.
- Easy Free Chain—State-of-the-art free wheeling mechanism allows quick and easy one-handed take-up and positioning of slack chain. Unconditional lifetime warranty on free chain knob.

Engineered For Reliable Operation

- Positive Load Control—Enclosed screw and disc-type load brake stays clean and dry for positive load holding and positioning. Hook latches on hooks for positive load engagement.
- Meets or exceeds minimum 4:1 design factor and all requirements of ASME / ANSI Standard B-30.21. All units tested at 125% of rated load.

SPECIFICATIONS

1500 - 12,000 Lbs.

Model Number	Capacity		Lift (Ft.) *	Strands of Load Chain	Minimum Distance Between Hooks (In.)	Handle Length (In.)	Average Handle Effort (Lbs.)	Net Weight (Lbs.)
	Lbs.	Tons						
LMSB-1500	1500	3/4	5	1	11 ⁵ / ₈	9 ¹ / ₄	46	13
LMSB-1510	1500	3/4	10	1	11 ⁵ / ₈	9 ¹ / ₄	46	15
LMSB-1515	1500	3/4	15	1	11 ⁵ / ₈	9 ¹ / ₄	46	17
LMSB-1520	1500	3/4	20	1	11 ⁵ / ₈	9 ¹ / ₄	46	19
LMSB-3000	3000	1 ¹ / ₂	5	1	14 ³¹ / ₃₂	13 ³ / ₄	55	22
LMSB-3010	3000	1 ¹ / ₂	10	1	14 ³¹ / ₃₂	13 ³ / ₄	55	25
LMSB-3015	3000	1 ¹ / ₂	15	1	14 ³¹ / ₃₂	13 ³ / ₄	55	28
LMSB-3020	3000	1 ¹ / ₂	20	1	14 ³¹ / ₃₂	13 ³ / ₄	55	31
LMSB-6000	6000	3	5	1	16 ⁹ / ₁₆	13 ³ / ₄	77	34
LMSB-6010	6000	3	10	1	16 ⁹ / ₁₆	13 ³ / ₄	77	39
LMSB-6015	6000	3	15	1	16 ⁹ / ₁₆	13 ³ / ₄	77	44
LMSB-6020	6000	3	20	1	16 ⁹ / ₁₆	13 ³ / ₄	77	49
LMSB-12000	12000	6	5	2	22 ⁷ / ₁₆	13 ³ / ₄	84	64
LMSB-12010	12000	6	10	2	22 ⁷ / ₁₆	13 ³ / ₄	84	75
LMSB-12015	12000	6	15	2	22 ⁷ / ₁₆	13 ³ / ₄	84	86
LMSB-12020	12000	6	20	2	22 ⁷ / ₁₆	13 ³ / ₄	84	97



⚠ WARNING

Overloading and Improper Use Can Result in Injury. See Warning on Back Cover.

* Standard Lifts Shown. Other Lifts Available - Consult Factory.

Products To Pull You Through The Tough Jobs



There's More



***Little Mule® Products
Make Your Job Easy and
Keep Your Costs Down***

LITTLE MULE®

To Request the Little Mule Products Catalog (LMC-1)
Please Call (800) 477-5003

Get a
GRIP!

WARRANTY

Every hoist is thoroughly inspected and tested prior to shipment from the factory. Should any problems develop, return the complete hoist prepaid to your nearest Little Mule® or Coffing® Authorized Warranty Repair Station. If inspection reveals that the problem is caused by defective workmanship or material, repairs will be made without charge and the hoist will be returned, transportation prepaid.

This warranty does not apply where: (1) deterioration is caused by normal wear, abuse, improper or inadequate power supply, eccentric or side winding, overloading, chemical or abrasive actions, improper maintenance or excessive heat; (2) problems resulted from repairs, modifications or alterations made by persons other than factory or Little Mule or Coffing

Authorized Warranty Repair Station personnel; (3) the hoist has been abused or damaged as a result of an accident; (4) repair parts or accessories other than those supplied by Little Mule or Coffing are used on the hoist. Equipment and accessories not of the seller's manufacture are warranted only to the extent that they are warranted by the manufacturer.

EXCEPT AS STATED HEREIN, LITTLE MULE MAKES NO OTHER WARRANTIES, EXPRESSED OR IMPLIED, INCLUDING WARRANTIES OF MERCHANTABILITY AND FITNESS FOR A PARTICULAR PURPOSE.

⚠ WARNING

Overloading and Improper Use Can Result In Injury

To Avoid Injury:

- Do not exceed working load limit, load rating, or capacity.
- Do not use to lift people or loads over people.
- Read and follow all instructions.



Little Mule Products • Coffing Hoists • Country Club Road • P.O. Box 779 • Wadesboro, North Carolina 28170 USA
Tel: (800) 477-5003 • (704) 694-2156 • Fax: (800) 374-6853 • (704) 694-6829
E-Mail: coffing@cmworks.com • www.coffinghoists.com