

# SPECIFICATIONS

## BRIDGE CRANE KITS

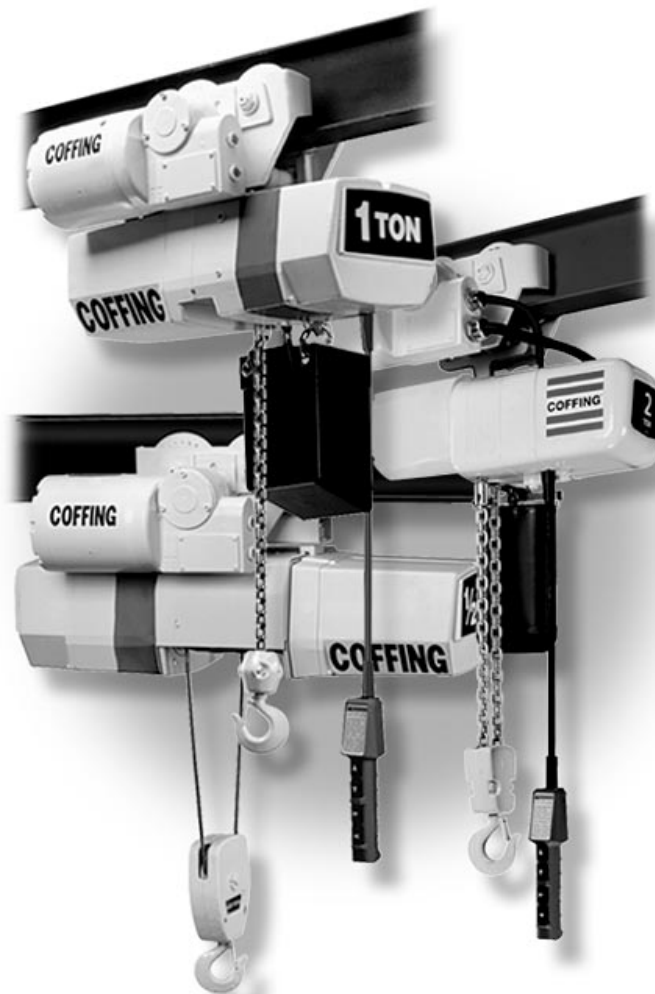
1/4 - 5 Ton Capacity  
Spans Up To 36 Feet

<b>Table of Contents</b>	
<b>UNDERHUNG</b>	
Push-Type Kits .....	3-7
Hand Geared Kits .....	7-9
Motor Driven Kits .....	10-14
<b>TOP-RUNNING</b>	
Push and Hand Geared Kits ...	15-17
Motor Driven Kits .....	18-21
<b>GENERAL INFORMATION</b>	
Crane Kits .....	22-23

*High Performance Lifting™*

# COFFING® HOISTS

# Have Your Lifting System *Market Matched*<sup>™</sup>



Coffing<sup>®</sup> Lifting Systems are *Market Matched* -- offering the right products to complete your material handling applications. Choose from the renowned **EC** and **ELC** electric chain hoists or the **WR** electric wire rope hoist.

*Capacities up to 5 tons.*

## **COFFING<sup>®</sup>** **HOISTS**

**Catalog No. 64**

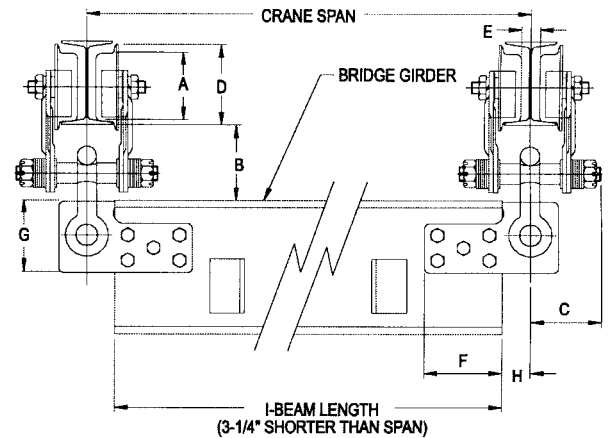
**Capacity 1/4 - 1 ton / Spans to 25 feet**

Catalog No. 64 kit enable building exceptionally low cost push type underhung crane bridges up to 1 metric ton capacity with spans to 25 feet. Trolleys are adjustable to fit American Standard Section runway beams from 6 inches to 12 inches.

The kit consists of two Catalog No. 82 I-Beam trolleys, two special shackles and pins, two pairs of beam end plates, spacer washers and necessary bolts, nuts and cotter pins.

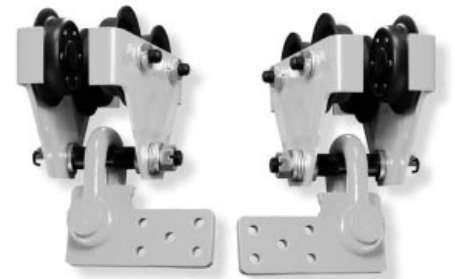
Everything to complete the bridge, except the bridge beam is included in the kit. The I-Beam should be American Standard Section 3 1/4 inches shorter than the span (center to center) of the runway beams. See chart below.

Suitable trolley stops must be provided at the ends of the bridge and runway beams.



**Clearance Dimensions (in inches unless otherwise stated)**

Metric Capacity* (lbs.)	Dia. A	B	C	D	E**	F	G	H
550	4	4-1/2	4-1/4	4-7/8	13/16	6-1/8	4-1/4	1-5/8
1100	4	4-1/2	4-1/4	4-7/8	13/16	6-1/8	4-1/4	1-5/8
2200	4	4-1/2	4-1/4	4-7/8	13/16	6-1/8	4-1/4	1-5/8



\*\*Dimension (E) occurs on smallest size beam only; on larger size beams, it is increased by the difference in flange width.

For metric rating of the complete crane, choose the larger rated capacity beam size that exceeds the trolley rating.

**Bridge Girder Beam Sizes For Various Spans For Catalog 62, 63 & 64 - Crane Bridgest**

Rated Capacity* (lbs)	Spans to 10'-0" size of beam	Spans to 15'-0" size of beam	Spans to 17'-6" size of beam	Spans to 20'-0" size of beam	Spans to 25'-0" size of beam	Spans to 27'-6" size of beam	Spans to 30'-0" size of beam
500	S6 x 12.5	S7 x 15.3	S7 x 15.3	S8 x 18.4	S10 x 25.4	S10 x 25.4	S10 x 25.4
1000	S7 x 15.3	S7 x 15.3	S7 x 15.3	S8 x 18.4	S10 x 25.4	S10 x 25.4	S12 x 31.8
2000	S7 x 15.3	S8 x 18.4	S10 x 25.4	S10 x 25.4	S12 x 31.8	S12 x 31.8	S12 x 40.8
3000	S8 x 18.4	S10 x 25.4	S10 x 25.4	S12 x 31.8	S12 x 40.8	S12 x 40.8	S15 x 42.9
4000	S10 x 25.4	S12 x 31.8	S12 x 31.8	S12 x 31.8	S15 x 42.9	S18 x 54.7	—
6000	S12 x 31.8	S12 x 40.8	S12 x 40.8	S12 x 40.8	S18 x 54.7	S18 x 54.7	—

\* Rated capacity is based on maximum combined hoist and trolley weights of 300 pounds for 1/4, 1/2 and 1-ton hoists; 400 pounds for 1 1/2 and 2-ton hoists; 500 pounds for 3-ton hoists.

† Beam sizes listed are American Standard I-Beam.

# Underhung Push-Type Bridge Crane Kits

**COFFING**<sup>®</sup> Country Club Road  
P.O. Box 779  
Wadesboro, NC 28170 USA  
TEL: (800) 477-5003  
FAX: (800) 374-6853

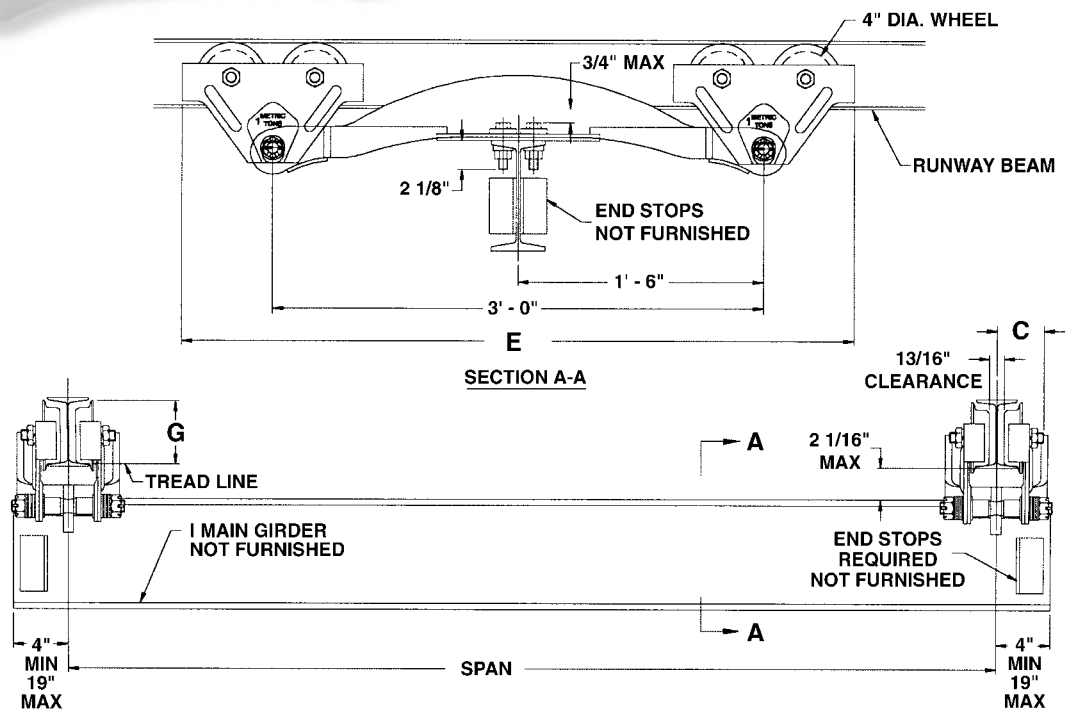
## Catalog Nos. 62 and 63

Capacity 1/4 - 3 tons / Spans to 30 feet

All necessary parts, except bridge beam to build push type, single girder underhung crane bridges with capacities to 3 U.S. tons and spans to 30 feet are available in kit form. Catalog 62 accommodates capacities to 2-tons, Catalog 63 to 3-tons. End trucks have slotted mounting holes to fit various beam sizes.

Each kit consist of four plain wheel trolley assemblies, two truck frames, eight sets of high-strength hex head bolts and self-locking nuts, four spacer plates, and eight bevel washers.

Everything to complete the bridge, except the I-Beam is included in the kit. The I-Beam should be American Standard Section, a minimum of 8 inches longer than the span of bridge. Suitable trolley stops must be provided at the ends of the bridge and runway beams. See chart below for outline dimensions.



## Clearance Dimensions (in inches unless otherwise stated)

Runway Beam Size			Catalog 62					Catalog 63				
Beam Height	Beam Weight (lbs)	Flange Width	B	C	E	F	G	B	C	E	F	G
5	10	3	13/16	4-5/16	4' - 1-1/4"	4	4-7/8	—	—	—	—	—
6	12.5	3-3/8	1-3/16	4-1/2				3/4	4-7/16	4' - 2-1/2"	4' - 15/16"	6
7	15.3	3-5/8	1-7/16	4-5/8				1	4-9/16			
8	18.4	4	1-13/16	4-13/16				1-3/8	4-3/4			
10	24.4	4-5/8	2-7/16	5-1/8				2	5-1/16			
12	31.8	5	2-13/16	5-5/16				2-3/8	5-1/4			
15	42.7	5-1/2**	—	—	—	—	2-7/8	5-1/2	—	—	—	

Beam sizes are American Standard Section.

\*\*Maximum flange width that truck beam will fit.

### Capacity 1/2 - 5 tons / Spans to 36 feet

These Crane bridge kits contain all the parts needed to build underhung single girder crane bridges, except the bridge beam, cross shaft and trolley stop angles. An illustrated, easy-to-understand assembly manual is included in each kit.

#### Push-Type Kits Contain:

Each kit includes one pair of end trucks and the required hardware for attaching truck frames to bridge I-Beam.

#### Material to be Purchased Locally:

- One length of American Standard Section I-Beam or wide flange which must be a minimum length of 16 inches longer than the span for 3-ton bridge and 18 1/2 inches longer than the span for 5-ton bridge. See chart on page 7 to select proper beam size and the charts on pages 6 & 7 for outline dimensions.
- Four trolley stop angles must be cut to size and attached to bridge beam.



### Push-Type Underhung Crane Kits

Maximum Capacity (tons)	Maximum Span (ft)	Kit Code	Runway Beam Flange Adj. Range	Wheel Type	Wheel Size (in)	Max. Wheel Load Per Pair (lbs)	Approx. Shipping Weight (lbs)
<b>Angle Construction Trucks</b>							
1/2	30	905360	3" - 8"	Pressed Steel Wheels	4	1444	300
1	24	905360SR		Spark Resistant Wheels			
2	30	905361	3-3/8" - 8"	Pressed Steel Wheels	5	2730	310
		905362		Forged Steel Wheels	4		320
		905362PT	3-1/4"	Patented Track Wheels			
		905362SR	3-3/8" - 8"	Spark Resistant Wheels			
<b>Channel Construction Trucks</b>							
3	36	905368	3-3/8" - 5-1/2"	Forged Steel Wheels	4	4240	380
		905368W1	5-1/2" - 8"				390
		905368W2	8" - 10-1/2"				400
		905368SR	3-3/8" - 5-1/2"	Spark Resistant Wheels			380
		905368PT	3-1/4"	Patented Track Wheels			
	24	905368S	3-3/8" - 5-1/2"	3' - 0" Short Wheelbase			330
5	36	905524	4" - 6-1/4"	Forged Steel Wheels	6-1/2	7520	550
		905524W1	6-3/8" - 9"				560
		905524W2	9" - 11-1/2"				570
		905524PT	3-1/4"	Patented Track Wheels			550
		905524SR		Spark Resistant Wheels			
	24	905524S	4" - 6-1/4"	3' - 0" Short Wheelbase			495

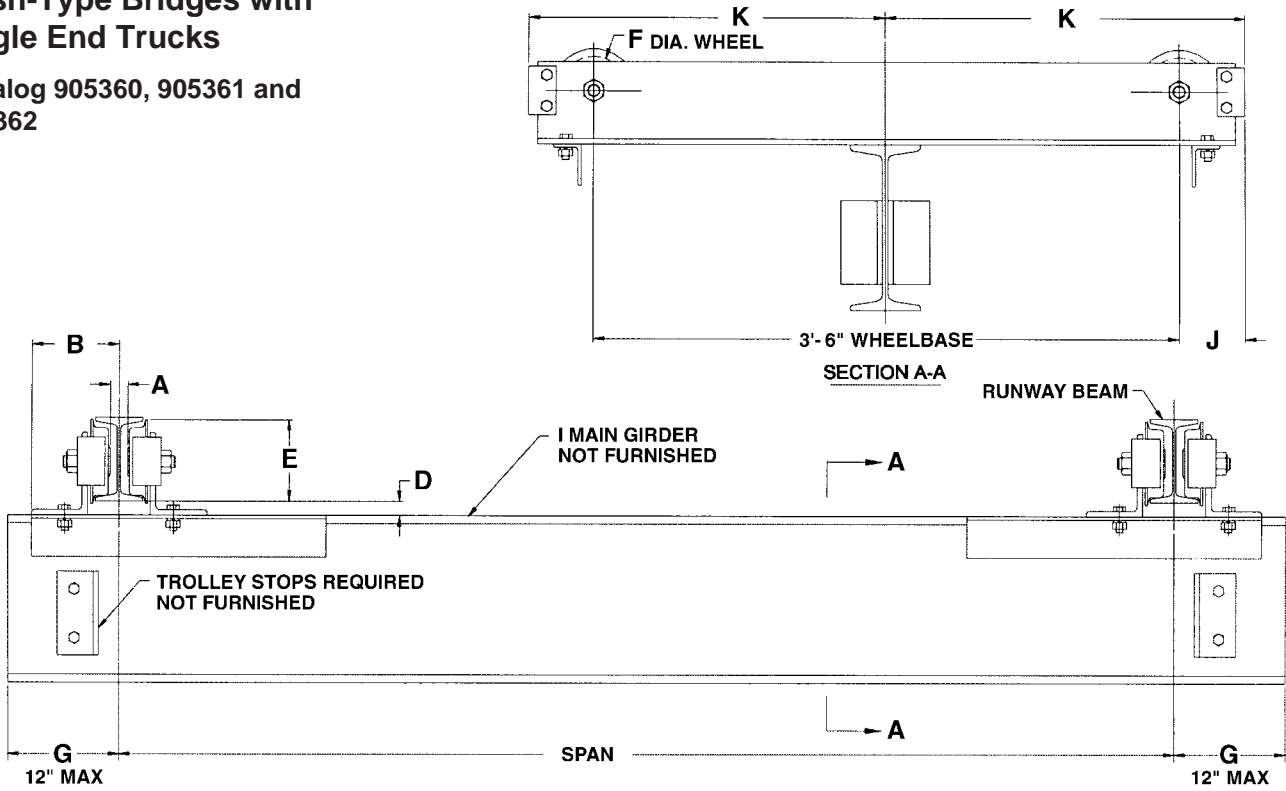
# Underhung Push-Type Bridge Crane Kits

**COFFING**<sup>®</sup>  
HOISTS

Country Club Road  
P.O. Box 779  
Wadesboro, NC 28170 USA  
TEL: (800) 477-5003  
FAX: (800) 374-6853

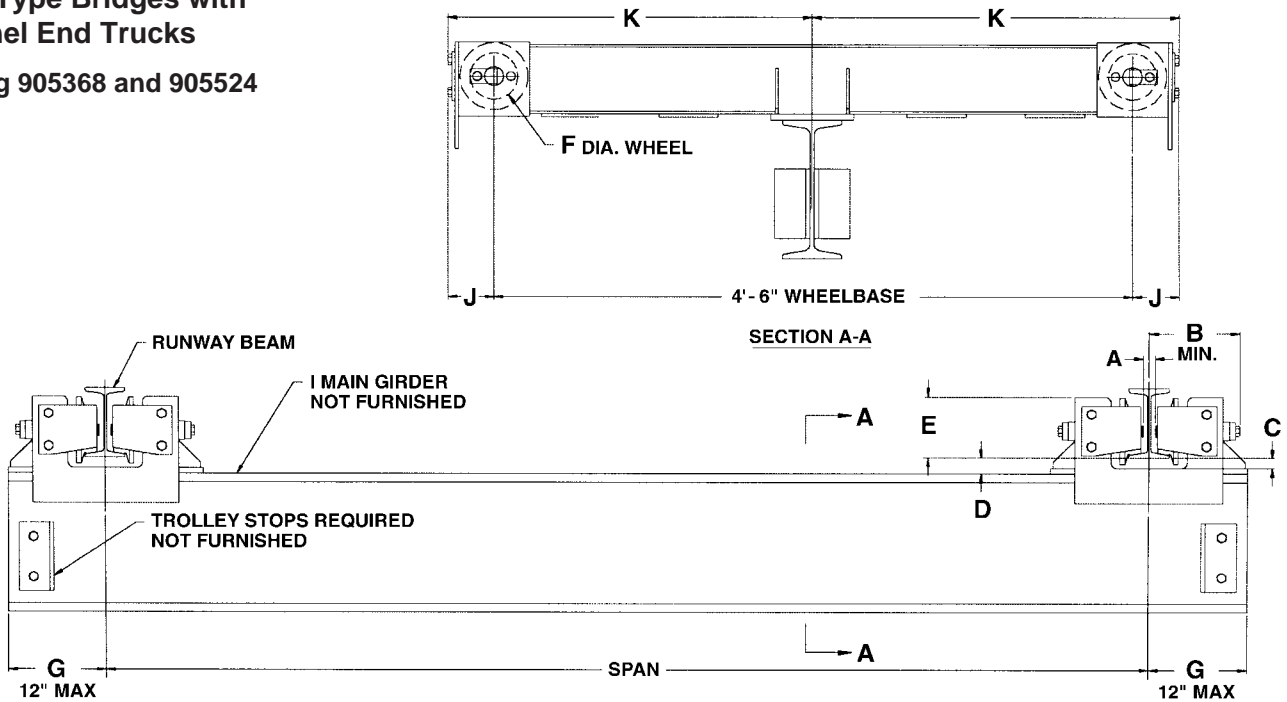
## Push-Type Bridges with Angle End Trucks

Catalog 905360, 905361 and  
905362



## Push-Type Bridges with Channel End Trucks

Catalog 905368 and 905524



**Bridge Girder Beam Sizes For Push or Hand Geared Crane\*\***

For Spans to (ft)	Rated Capacity* (tons)							
	1/4	1/2	1	1-1/2	2	3	4	5
10	S6x12.5	S7x15.3	S7x15.3	S8x18.4	S10x25.4	S12x40.8	S12x40.8	S12x40.8
12	S6x12.5	S7x15.3	S7x15.3	S10x25.4	S10x25.4	S12x40.8	S12x40.8	S18x54.7
14	S7x15.3	S7x15.3	S7x15.3	S10x25.4	S12x31.8	S12x40.8	S12x40.8	S18x54.7
16	S7x15.3	S7x15.3	S8x18.4	S10x25.4	S12x31.8	S12x40.8	S12x40.8	S18x54.7
18	S7x15.3	S7x15.3	S10x25.4	S10x25.4	S12x31.8	S12x40.8	S15x42.9	S18x54.7
20	S8x18.4	S8x18.4	S10x25.4	S12x31.8	S12x31.8	S12x40.8	S18x54.7	S18x54.7
22	S8x18.4	S10x25.4	S10x25.4	S12x31.8	S12x40.8	S18x54.7	S18x54.7	S20x66
24	S10x25.4	S10x25.4	S12x40.8	S12x40.8	S12x40.8	S18x54.7	S18x54.7	S20x66
26	S10x25.4	S10x25.4	S12x40.8	S12x40.8	S15x42.9	S18x54.7	S20x66	S24x80
28	S10x25.4	S10x25.4	S12x40.8	S12x40.8	S18x54.7	S20x66	S20x66	S24x80
30	S10x25.4	S12x31.8	S12x40.8	S18x54.7	S18x54.7	S20x66	S18x54.7C9x13.4	S24x80
32	S10x25.4	S12x31.8	S12x40.8	S18x54.7	S15x42.9C8x11.5	S18x54.7C9x13.4	S18x54.7C9x13.4	S20x66C9x13.4
34	S12x31.8	S12x40.8	S15x42.9	S18x54.7	S15x42.9C8x11.5	S18x54.7C9x13.4	S18x54.7C9x13.4	S20x66C9x13.4
36	S12x31.8	S12x40.8	S18x54.7	S15x42.9C8x11.5	S15x42.9C8x11.5	S18x54.7C12x20.7	S20x66C9x13.4	S20x66C9x13.4

\* Rated capacity is based on maximum combined hoist and trolley weights of 500 pounds for 1/4, 1/2 and 1-ton hoists; 1100 pounds for 1 1/2 and 2-ton hoists; 1600 pounds for 3 and 4-ton hoists; 2000 pounds for 5-ton hoists. Bridge designed in accordance with CMAA Specification No. 74, revised 1987.

\*\*Beam sizes listed are American Standard I-Beam and channel sections. Use ASTM A36 grade steel, first quality, free of rust and excessive mill scale.

**Clearance Dimensions For Push-Type Cranes (in inches unless otherwise stated)**

Product Code	Rated Capacity* (tons)	Max. Span (ft)	Runway Beam Sizes**			A	B	C	D	E	F Wheel Dia.	G Min.	H	J†	K	
			Min. Beam Width	Min. Flange Width	Max. Flange Width											
<b>Push Type Kit</b>																
905360	1/2	30	S5x10	3	8	1-1/4	6-1/16	—	1-5/8	4-13/16	4	8	—	4-3/4	2' - 1-3/4"	
	1	24		3												
905361	2	30	S6x12.5	3-3/8		1-3/8	6-1/4	—	1-1/16	5-7/8	5	4	8-1/4	14	4	2' - 7"
905362						1-1/4	6-11/16		1-9/16	5-13/16						
905368	3	36	S8x18.4	4	5-1/2	1-1/8	7-13/16	15/16	1-7/16	5-1/8	6-1/2	9-3/8	14-5/8	5-1/2	2' - 8-5/8"	
905524	5				6-1/4	3/4	8-11/16	13/16	1-5/16	8						

\*\*Runway beam sizes shown indicate range of beams that trucks will fit. For proper runway size, consult qualified engineer or architect.

End trucks for wider flange beams or 3 1/4" patented track are available.

Dimensions A, B, C, D and E are based on minimum beam.

† Dimension with rubber bumpers: 3-ton catalogs 905368 = 7 3/8" and 5-ton catalogs 905524 = 8 7/8".

# Underhung Hand Geared Bridge Crane Kits

## Capacity 1/2 - 5 tons / Spans to 36 feet

These Crane bridge kits contain all the parts needed to build underhung single girder crane bridges, except the bridge beam, cross shaft and trolley stop angles. An illustrated, easy-to-understand assembly manual is included in each kit.

### Hand Geared Kits Contain:

- End trucks (1 pair) complete with driving pinion and attachment hardware.
- Cross shaft support (quantity based upon span).
- Drive couplings (quantity based upon span).
- Chain wheel and chain guide.
- 36 foot length of hand chain with open connecting link.

### Material to be Purchased Locally:

- One length of American Standard Section I-Beam or wide flange which must be a minimum length of 16 inches longer than the span for 3-ton bridge and 18 1/2 inches longer than the span for 5-ton bridge. See chart on page 7 to select proper beam size and the chart on page 9 for outline dimensions.
- Four trolley stop angles must be cut to size and attached to bridge beam.
- Hand Geared Bridges Only. 1 inch diameter cross shaft is required. Length depends on span and is determined by referring to outline dimensions on page 9.

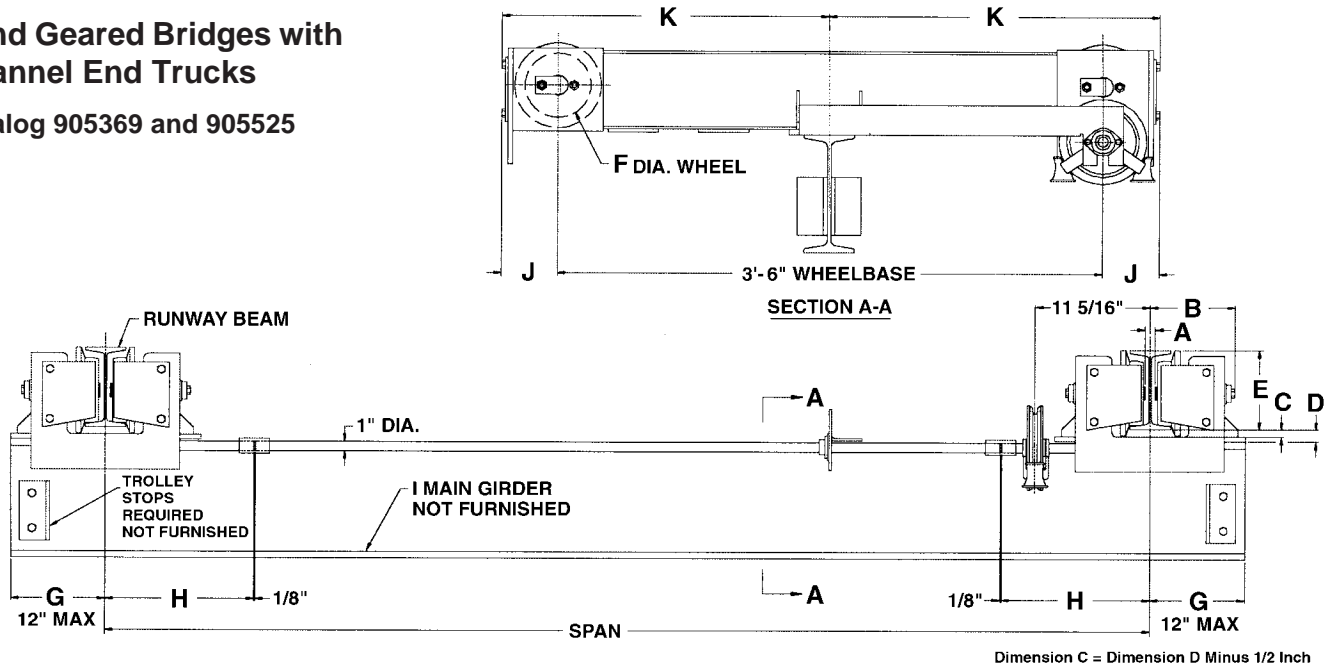
Max. Capacity (tons)	Max. Span (ft)	Kit Code	End Trucks Code Number	Kit Consists Of:				Wheel Size and Type	Max. Wheel Load Per Pair (lbs)	Approx. Shipping Weight (lbs)
				Cross Shaft Support Assembly		Cross Shaft Coupling				
				Qty.	Code Number	Qty.	Code Number			
<b>Standard</b>										
3	15	B03/15UHG	905369 4' - 6" WB	1	905373	2	905374	4" dia. geared solid forged steel wheels	4240	440
	22	B03/22UHG		2		2				442
	29	B03/29UHG		3		3				446
	36	B03/36UHG		4		3				448
5	15	B05/15UHG	905525 4' - 6" WB	1	905373	2	905374	6-1/2" dia. geared solid forged steel wheels	7520	520
	22	B05/22UHG		2		2				522
	29	B05/29UHG		3		3				526
	36	B05/36UHG		4		3				528
<b>Spark Resistant</b>										
3	15	B03/15UHGSR	90536SR 4' - 6" WB	1	905373	2	905374	4" dia. geared bronze wheels	4240	480
	22	B03/22UHGSR		2		2				482
	29	B03/29UHGSR		3		3				486
	36	B03/36UHGSR		4		3				488
5	15	B05/15UHGSR	90552SR 4' - 6" WB	1	905373	2	905374	6-1/2" dia. geared bronze wheels	7520	570
	22	B05/22UHGSR		2		2				572
	29	B05/29UHGSR		3		3				576
	36	B05/36UHGSR		4		3				578

**Kit Consists of:** 904550 Hand Chain Wheel      2 End Trucks      Shaft Diameter is 1"  
 36' Hand Chain      Cross Shaft Support as noted above      For Runway Flange Widths of 3 3/8" - 5 1/2" 3 ton  
 1 Hand Chain Link      Cross Shaft Coupling as noted above      For Runway Flange Widths of 4" - 6 1/4" 5 ton



**Hand Geared Bridges with  
Channel End Trucks**

Catalog 905369 and 905525



**Clearance Dimensions (in inches unless otherwise stated)**

Product Code	Rated Capacity (tons)	Max. Span (ft)	Runway Beam Sizes**			A	B	C	D	E	F Wheel Dia.	G Min.	H	J†	K
			Min. Beam Width	Min. Flange Width	Max. Flange Width										
<b>Hand Geared Type End Trucks</b>															
905369	3	36	S8x12.5	3-3/8	5-1/2	1-1/8	7-13/16	15/16	1-7/16	5-1/8	4	8-1/4	14	5-1/4	2' - 7"
905525	5		S8x18.4	4	6-1/4	3/4	8-11/16	13/16	1-5/16	8	6-1/2	9-3/8	14-5/8	5-1/2	2' - 8-5/8"

\*\*Runway beam sizes shown indicate range of beams that trucks will fit. For proper runway size, consult qualified engineer or architect.  
End trucks for wider flange beams or 3 1/4" patented track are available.  
Dimensions A, B, C, D and E are based on minimum beam.

† Dimension with rubber bumpers: 3-ton catalogs 905369 = 7 3/8" and 5-ton catalogs 905525 = 8 7/8".



# Underhung Motor Driven Bridge Crane Kits

## Motor Driven with Single Drive Underhung Capacity 1/4 to 3 ton / Spans to 36 feet

Max. Capacity (tons)	Max. Span (ft)	Speed (fpm)	Kit Code	Kit Consists Of:					Approx. Shipping Weight (lbs)			
				End Trucks Code Number	Gear Reducer	Cross Shaft Support (Qty)	Cross Shaft Coupling (Qty)	Controls & Motors	1 Speed	2 Speed		
1/4 thru 3	8	55	B03/08UC*55	905369 4'-6" WB	905378	Not Req'd			1 each Control 1 each 1/2 hp motor 1 each Disconnect (see below)	524	544	
		70	B03/08UC*70		905377							
		110	B03/08UC*110		905376							
	15	55	B03/15UC*55		905378	1	2				544	564
		70	B03/15UC*70		905377							
		110	B03/15UC*110		905376							
	22	55	B03/22UC*55		905378	2					564	584
		70	B03/22UC*70		905377							
		110	B03/22UC*110		905376							
	29	55	B03/29UC*55		905378	3					586	606
		70	B03/29UC*70		905377							
		110	B03/29UC*110		905376							
	36	55	B03/36UC*55		905378	4	3				606	626
		70	B03/36UC*70		905377							
		110	B03/36UC*110		905376							

For runway flange width of 3<sup>3</sup>/<sub>8</sub>" - 5<sup>1</sup>/<sub>2</sub>"  
 Max wheel load per pair - 4240 lbs.  
 Wheels - 4" diameter solid forged steel  
 \* **Specify:** 1 = Single Speed  
 2 = Two Speed

## Motor and Controls for Single Drive Underhung Cranes

208 - 230 Volt			460 Volt			575 Volt		
1/2 hp Motor (1) req'd	Control (1) req'd	Disconnect Switch (1) req'd	1/2 HP Motor (1) req'd	Control (1) req'd	Disconnect Switch (1) req'd	1/2 HP Motor (1) req'd	Control (1) req'd	Disconnect Switch (1) req'd
<b>Single Speed</b>								
905381	44600301	905388	905381	44600303	905389	905382	44600304	905389
<b>Two Speed</b>								
905394	44600341	905388	905395	44600343	905389	905396	44600344	905389

Single phase available  
 NEMA1 Enclosures Standard  
 Control panel includes mainline contactor, bridge fusing, reversing contactor and 115-volt control circuit transformer.

**Motor Driven with Single Drive Underhung**  
**Capacity 1/4 - 5 ton / Spans to 36 feet**

Max. Capacity (tons)	Max. Span (ft)	Speed (fpm)	Kit Code	Kit Consists Of:					Approx. Shipping Weight (lbs)		
				End Trucks Code Number	Gear Reducer	Cross Shaft Support (Qty)	Cross Shaft Coupling (Qty)	Controls & Motors	1 Speed	2 Speed	
1/4 thru 5	8	50	B05/08UC*50	905525 4'-6" WB	905378	Not Req'd			1 each Control	644	664
		65	B05/08UC*65		905377						
		100	B05/08UC*100		905376						
	15	50	B05/15UC*50		905378	1	2	1 each 1/2 hp motor	1 each Disconnect (see below)	664	684
		65	B05/15UC*65		905377						
		100	B05/15UC*100		905376						
	22	50	B05/22UC*50		905378	2				684	704
		65	B05/22UC*65		905377						
		100	B05/22UC*100		905376						
	29	50	B05/29UC*50		905378	3				704	724
		65	B05/29UC*65		905377						
		100	B05/29UC*100		905376						
	36	50	B05/36UC*50		905378	4	3			724	744
		65	B05/36UC*65		905377						
		100	B05/36UC*100		905376						

– For Runway Flange Widths of 4" - 6 1/4"

\*Specify: 1 = Single Speed      Max wheel load per pair - 7520 lbs.  
          2 = Two Speed            Wheels - 6 1/2" diameter solid forged steel

**Motor and Controls for Single Drive Underhung Cranes**

208 - 230 Volt			460 Volt			575 Volt		
1/2 hp Motor (1) req'd	Control (1) req'd	Disconnect Switch (1) req'd	1/2 HP Motor (1) req'd	Control (1) req'd	Disconnect Switch (1) req'd	1/2 HP Motor (1) req'd	Control (1) req'd	Disconnect Switch (1) req'd
<b>Single Speed</b>								
905381	44600301	905388	905381	44600303	905389	905382	44600304	905389
<b>Two Speed</b>								
905394	44600341	905388	905395	44600343	905389	905396	44600344	905389

Single phase available

NEMA1 Enclosures Standard

Control panel includes mainline contactor, bridge fusing, reversing contactor and 115-volt control circuit transformer.

# Underhung Motor Driven Bridge Crane Kits

**COFFING**<sup>®</sup>  
**HOISTS**

Country Club Road  
P.O. Box 779  
Wadesboro, NC 28170 USA  
TEL: (800) 477-5003  
FAX: (800) 374-6853

## Motor Driven with Dual Drive Underhung Capacity 1/4 - 3 ton / Spans to 36 feet

Max. Capacity (tons)	Max. Span (ft)	Speed (fpm)	Kit Code	Kit Consists Of:			Approx. Shipping Weight (lbs)	
				End Trucks Code Number	Gear Reducer (Qty 2)	Controls & Motors	1 Speed	2 Speed
<b>Standard</b>								
1/4 thru 3	36	55	B03/36DUC*55	905369 4'-6" WB	905378	1 each Control 2 each 1/2 hp Motor 1 each Disconnect (see below)	545	565
		70	B03/36DUC*70		905377			
		110	B03/36DUC*110		905376			

- For Runway Flange Widths of 3<sup>3</sup>/<sub>8</sub>" - 5<sup>1</sup>/<sub>2</sub>"

Single phase not available

\* **Specify:** 1 = Single Speed  
2 = Two Speed

## Capacity 1/4 - 5 ton / Spans to 36 feet

Max. Capacity (tons)	Max. Span (ft)	Speed (fpm)	Kit Code	Kit Consists Of:			Approx. Shipping Weight (lbs)	
				End Trucks Code Number	Gear Reducer (Qty 2)	Controls & Motors	1 Speed	2 Speed
<b>Standard</b>								
1/4 thru 5	36	50	B05/36DUC*50	905525 4'-6" WB	905378	1 each Control 2 each 1/2 hp Motor 1 each Disconnect (see below)	665	685
		65	B05/36DUC*65		905377			
		100	B05/36DUC*100		905376			

- For Runway Flange Widths of 4" - 6<sup>1</sup>/<sub>4</sub>"

Single phase not available

\* **Specify:** 1 = Single Speed  
2 = Two Speed

## Motor & Controls for Dual Drive Underhung Cranes

208 - 230 Volt			460 Volt			575 Volt		
1/2 HP Motor (2) req'd	Control (1) req'd	Disconnect Switch (1) req'd	1/2 HP Motor (2) req'd	Control (1) req'd	Disconnect Switch (1) req'd	1/2 HP Motor (2) req'd	Control (1) req'd	Disconnect Switch (1) req'd
<b>Single Speed</b>								
905381	44600311	913090	905381	44600303	905389	905382	44600304	905389
<b>Two Speed</b>								
905394	44600351	913090	905395	44600343	905389	905396	44600344	905389

Single phase not available

NEMA 1 Enclosures Standard

Control panel includes mainline contactor, bridge fusing, reversing contactor and 115-volt control circuit transformer.

**Bridge Girder Beam Sizes For Various Spans - Motor Driven Crane  
American Standard I-Beams and Channel Sections**

For Spans to (ft)	Rated Capacity* (tons)							
	1/4	1/2	1	1-1/2	2	3	4	5
10	S7x15.3	S7x15.3	S7x15.3	S10x25.4	S10x25.4	S12x40.8	S12x40.8	S12x40.8
12	S7x15.3	S7x15.3	S7x15.3	S10x25.4	S12x31.8	S12x40.8	S12x40.8	S18x54.7
14	S7x15.3	S7x15.3	S7x15.3	S10x25.4	S12x31.8	S12x40.8	S12x40.8	S18x54.7
16	S7x15.3	S7x15.3	S8x18.4	S10x25.4	S12x31.8	S12x40.8	S18x54.7	S18x54.7
18	S7x15.3	S8x18.4	S10x25.4	S12x31.8	S12x31.8	S18x54.7	S18x54.7	S20x66
20	S8x18.4	S8x18.4	S10x25.4	S12x31.8	S12x40.8	S18x54.7	S18x54.7	S20x66
22	S8x18.4	S10x25.4	S12x31.8	S12x40.8	S12x40.8	S18x54.7	S20x66	S20x66
24	S10x25.4	S10x25.4	S12x31.8	S12x40.8	S18x54.7	S20x66	S20x66	S24x80
26	S10x25.4	S10x25.4	S12x40.8	S18x54.7	S18x54.7	S20x66	S18x54.7C9x13.4	S24x80
28	S10x25.4	S12x31.8	S12x40.8	S18x54.7	S12x40.8C8x11.5	S18x54.7C9x13.4	S18x54.7C9x13.4	S20x66C9x13.4
30	S12x31.8	S12x31.8	S12x40.8	S18x54.7	S12x40.8C8x11.5	S18x54.7C9x13.4	S18x54.7C9x13.4	S20x66C9x13.4
32	S12x31.8	S12x40.8	S18x54.7	S12x40.8C8x11.5	S15x42.9C8x11.5	S18x54.7C9x13.4	S18x54.7C10x15.3	S20x66C9x13.4
34	S12x40.8	S12x40.8	S18x54.7	S15x42.9C8x11.5	S15x42.9C8x11.5	S18x54.7C9x13.4	S20x66C9x13.4	S20x66C9x13.4
36	S12x40.8	S12x40.8	S12x31.8C9x13.4	S15x42.9C8x11.5	S15x42.9C8x11.5	S18x54.7C12x20.7	S20x66C9x13.4	S20x66C12x20.7

\* Rated capacity is based on maximum combined hoist and trolley weights of 500 pounds for 1/4, 1/2 and 1-ton hoists; 1100 pounds for 1 1/2 and 2-ton hoists; 1600 pounds for 3 and 4-ton hoists; 2000 pounds for 5-ton hoists. Bridge designed in accordance with CMAA Specification No. 74, revised 1987. Use ASTM A36 grade steel, first quality, free of rust and excessive mill scale.

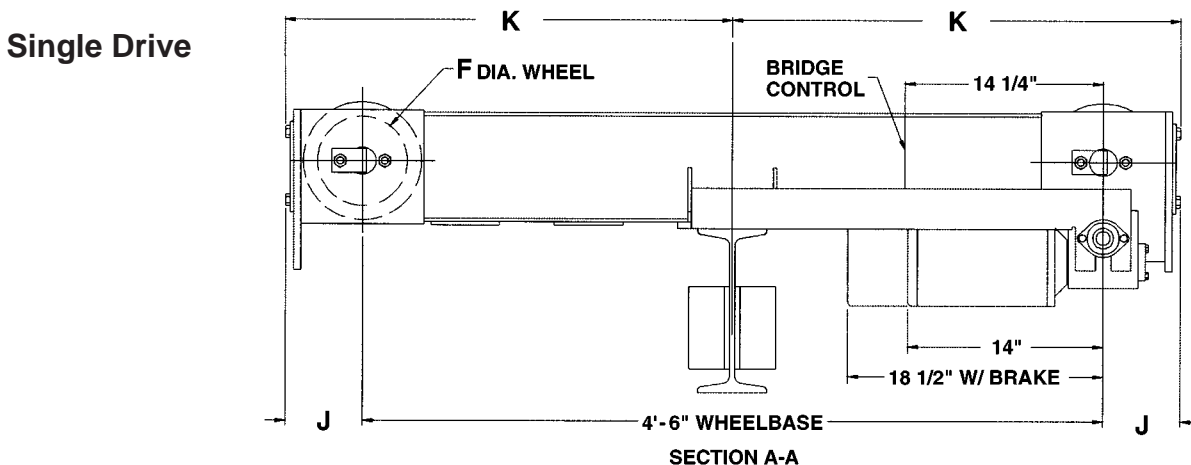
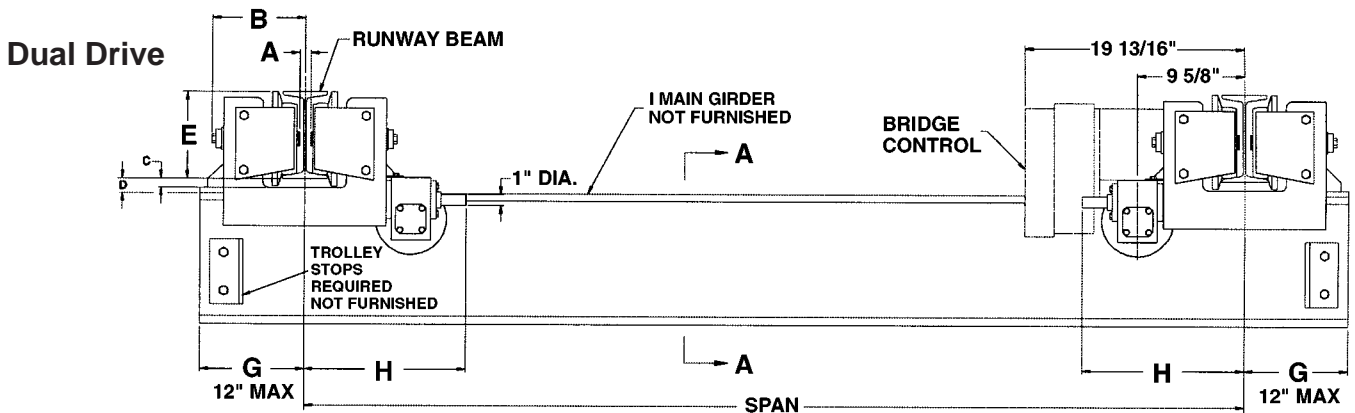
**American Standard Wide Flange Beams**

For Spans to (ft)	Rated Capacity* (tons)							
	1/4	1/2	1	1-1/2	2	3	4	5
10	W 6x12	W 6x12	W 8x15	W 10x19	W 12x22	W 12x35	W 18x40	W 18x46
12	W 6x12	W 6x12	W 8x15	W 10x19	W 10x26	W 12x35	W 18x40	W 18x46
14	W 6x12	W 6x12	W 8x18	W 10x26	W 14x26	W 14x38	W 10x45	W 16x50
16	W 6x12	W 8x15	W 8x18	W 10x26	W 10x30	W 18x40	W 16x45	W 14x53
18	W 8x15	W 8x18	W 8x21	W 10x26	W 10x30	W 18x40	W 18x46	W 16x57
20	W 8x18	W 8x18	W 8x21	W 10x30	W 10x30	W 10x45	W 12x50	W 16x57
22	W 8x18	W 8x21	W 10x26	W 10x30	W 12x35	W 16x45	W 16x50	W 16x57
24	W 8x18	W 8x21	W 10x26	W 14x34	W 14x38	W 14x48	W 14x53	W 18x65
26	W 8x21	W 10x26	W 10x30	W 12x35	W 12x40	W 12x50	W 16x57	W 18x65
28	W 10x22	W 10x26	W 10x33	W 12x40	W 12x40	W 14x53	W 18x65	W 18x71
30	W 10x26	W 10x30	W 12x35	W 12x40	W 12x45	W 14x53	W 16x67	W 14x74
32	W 10x26	W 10x30	W 14x38	W 12x45	W 14x48	W 14x61	W 16x67	W 16x77
34	W 10x30	W 14x34	W 12x40	W 14x48	W 14x53	W 16x67	W 16x67	W 16x89
36	W 10x30	W 12x35	W 12x40	W 14x53	W 14x61	W 16x67	W 16x77	W 16x89

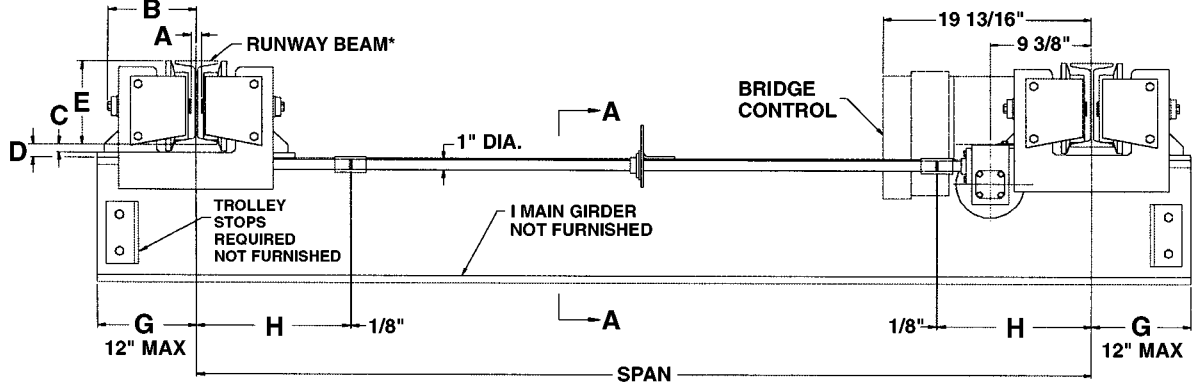
\* Rated capacity is based on maximum combined hoist and trolley weights of 500 pounds for 1/4, 1/2 and 1-ton hoists; 1100 pounds for 1 1/2 and 2-ton hoists; 1600 pounds for 3 and 4-ton hoists; 2000 pounds for 5-ton hoists. Bridge designed in accordance with CMAA Specification No. 74, revised 1987. Use ASTM A36 grade steel, first quality, free of rust and excessive mill scale.

# Underhung Motor Driven Bridge Crane Kits

**COFFING**<sup>®</sup> Country Club Road  
 P.O. Box 779  
 Wadesboro, NC 28170 USA  
 TEL: (800) 477-5003  
 FAX: (800) 374-6853



SECTION A-A



## Clearance Dimensions (in inches unless otherwise stated)

Product Code	Rated Capacity (tons)	Max. Span (ft)	Runway Beam Sizes**			A	B	C	D	E	F Wheel Dia.	G Min.	H	J†	K	Max. Wheel Load Per Pair (lbs)	Approx. Shipping Weight (lbs)
			Min. Beam Width	Min. Flange Width	Max. Flange Width												
905369	1/4 - 3	36	S6x12.5	3-3/8	5-1/2	1-1/8	7-13/16	15/16	1-7/16	5-1/8	4	8-1/4	14	4	2' - 7"	4240	400
905525	5	36	S8x18.4	4	6-1/4	3/4	8-11/16	13/16	1-5/16	8	6-1/2	9-3/8	14-5/8	5-1/2	2' - 8-5/8"	7520	480

\*\*Runway beam sizes shown indicate range of beams that trucks will fit. For proper runway size, consult qualified engineer or architect.

End trucks for wider flange beams or 3 1/4" patented track are available.

Dimensions A, B, C, D and E are based on minimum beam.

† Dimension with rubber bumpers: 3-ton catalogs 905369 = 7 3/8" and 5-ton catalogs 905525 = 8 7/8".

**Push & Hand Geared Type Kits**

**Capacity 1/2 - 5 tons / Spans to 36 feet**

Crane bridge kits contain all the parts needed to build top running single girder crane bridges, except for the bridge beam, cross shaft (when required) and trolley stop angles.

**Push-Type Kits Contain:**

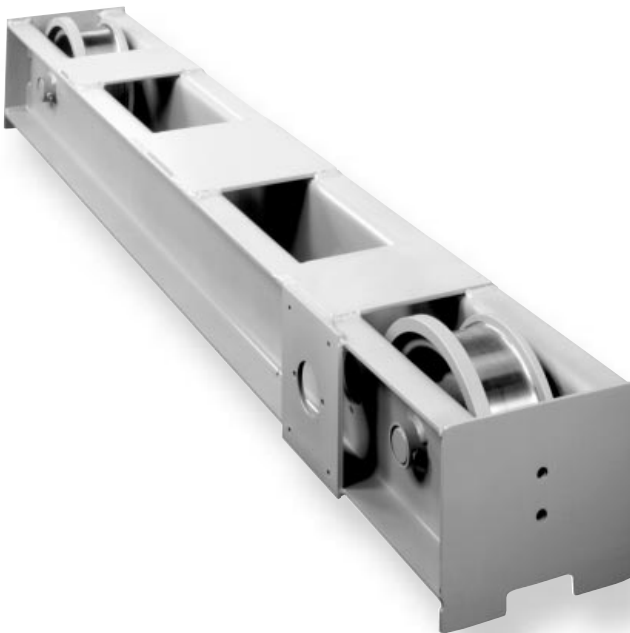
- End trucks (1 pair).
- Complete attachment hardware.

**Hand Geared Kits Contain:**

- End trucks (1 pair) complete with driving pinion and attachment hardware.
- Cross shaft support (quantity based upon span).
- Drive couplings (quantity based upon span).
- Chain wheel and chain guide.
- 36 foot length of hand chain with open connecting link.

**Material to be Purchased Locally:**

- American standard section I-Beam or wide flange that is at least 9 1/4" longer than the bridge span.
- Four trolley stop angles must be cut to size and attached to bridge beam.
- For hand geared bridges only: 1" diameter cross shaft to match span. Please refer to dimension chart on page 17.



**Push-Type Top Running Kits**

Kit Code	Maximum Capacity (tons)	Maximum Span (ft)	Description	Maximum Wheel Load Per Pair (lbs)	Approx. Shipping Weight (lbs)
904535	5	36	8" Ductile Iron Wheels 4'-6" WB	6500	450
904535SR			8" Spark Resistant Wheels 4'-6" WB		
904535S		24	8" Ductile Iron Wheels 3'-0" Short Wheel Base		405

Each kit includes one pair of end trucks and the required hardware to attach truck frames to bridge I-Beam.

# Top-Running Push & Hand Geared Bridge Crane Kits



Country Club Road  
P.O. Box 779  
Wadesboro, NC 28170 USA  
TEL: (800) 477-5003  
FAX: (800) 374-6853

## Hand Geared Top-Running Capacity 1/4 - 5 tons / Spans to 36 feet

Max. Capacity (tons)	Max. Span (ft)	Kit Code	End Trucks Code Number	Kit Consists Of:				Approx. Shipping Weight (lbs)	Wheel Size and Type	Max. Wheel Load Per Pair (lbs)
				Cross Shaft Bearing Assembly		Cross Shaft Coupling				
				Qty.	Code Number	Qty.	Code Number			
<b>Standard</b>										
1/4 thru 5	15	B05/15TH	904536 4' - 6" WB	1	904540	2	905374	500	8" dia. geared ductile iron	6500
	22	B05/22TH		2		2		515		
	29	B05/29TH		3		3		532		
	36	B05/36TH		4		3		549		
<b>Spark Resistant</b>										
1/4 thru 5	15	B05/15THSR	904536SR 4' - 6" WB	1	904540	2	905374	550	8" dia. geared bronze	6500
	22	B05/22THSR		2		2		565		
	29	B05/29THSR		3		3		582		
	36	B05/36THSR		4		3		599		

**Kit Consists of:** 904550 Hand Chain Wheel      2 End Trucks      Shaft Diameter is 1"  
 36' Hand Chain      Cross Shaft Bearing as noted above  
 1 Hand Chain Link      Cross Shaft Coupling as noted above

## Bridge Girder Beam Sizes For Push or Hand Geared Cranes\*\*

For Spans to (ft)	Rated Capacity* (tons)							
	1/4	1/2	1	1-1/2	2	3	4	5
10	S6x12.5	S7x15.3	S7x15.3	S8x18.4	S10x25.4	S12x40.8	S12x40.8	S12x40.8
12	S6x12.5	S7x15.3	S7x15.3	S10x25.4	S10x25.4	S12x40.8	S12x40.8	S18x54.7
14	S7x15.3	S7x15.3	S7x15.3	S10x25.4	S12x31.8	S12x40.8	S12x40.8	S18x54.7
16	S7x15.3	S7x15.3	S8x18.4	S10x25.4	S12x31.8	S12x40.8	S12x40.8	S18x54.7
18	S7x15.3	S7x15.3	S10x25.4	S10x25.4	S12x31.8	S12x40.8	S15x42.9	S18x54.7
20	S7x15.3	S8x18.4	S10x25.4	S12x31.8	S12x31.8	S12x40.8	S18x54.7	S18x54.7
22	S8x18.4	S10x25.4	S10x25.4	S12x31.8	S12x40.8	S18x54.7	S18x54.7	S20x66
24	S8x18.4	S10x25.4	S12x31.8	S12x40.8	S12x40.8	S18x54.7	S18x54.7	S20x66
26	S10x25.4	S10x25.4	S12x31.8	S12x40.8	S15x42.9	S18x54.7	S20x66	S24x80
28	S10x25.4	S10x25.4	S12x40.8	S12x40.8	S18x54.7	S20x66	S20x66	S24x80
30	S10x25.4	S12x31.8	S12x40.8	S18x54.7	S18x54.7	S20x66	S18x54.7C9x13.4	S24x80
32	S10x25.4	S12x31.8	S12x40.8	S18x54.7	S15x42.9C8x11.5	S18x54.7C9x13.4	S18x54.7C9x13.4	S20x66C9x13.4
34	S12x31.8	S12x40.8	S15x42.9	S18x54.7	S15x42.9C8x11.5	S18x54.7C9x13.4	S18x54.7C9x13.4	S20x66C9x13.4
36	S12x31.8	S12x40.8	S18x54.7	S15x42.9C8x11.5	S15x42.9C8x11.5	S18x54.7C9x13.4	S20x66C9x13.4	S20x66C9x13.4

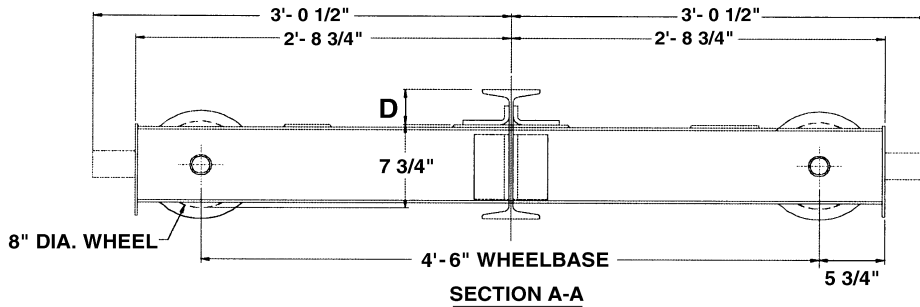
\* Rated capacity is based on maximum combined hoist and trolley weights of 500 pounds for 1/4, 1/2 and 1-ton hoists; 1100 pounds for 1 1/2 and 2-ton hoists; 1600 pounds for 3 and 4-ton hoists; 2000 pounds for 5-ton hoists. Bridge designed in accordance with CMAA Specification No. 74, revised 1987.

\*\*Beam sizes listed are American standard I-Beam and channel sections. Use ASTM A36 grade steel, first quality, free of rust and excessive mill scale.



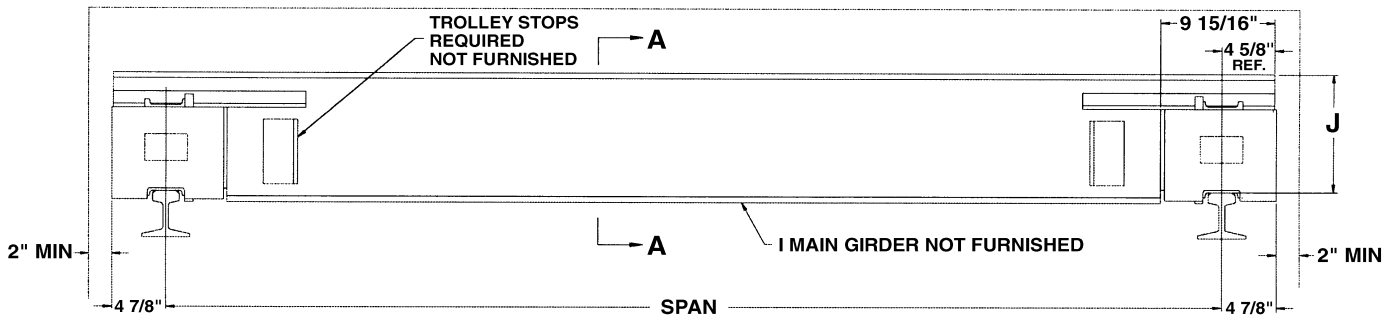
**Outline Dimensions**

**Push-Type**

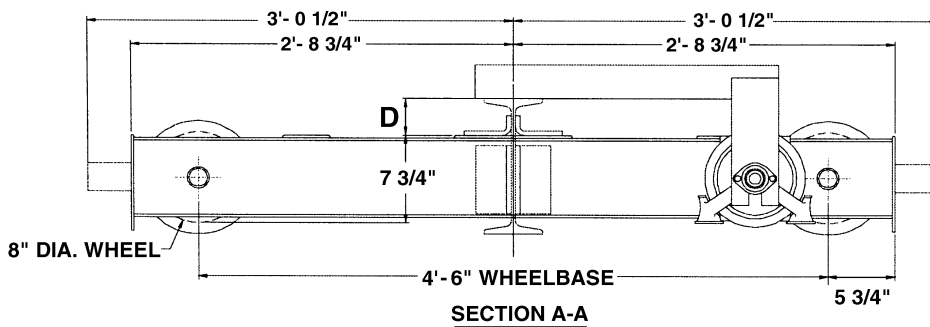


Beams (Depth)	D
6", 7", 8", 10" & 12"	3-1/4"
15", 18" & 20"	4-3/4"

$J = 7 \frac{3}{4} + D + 3$

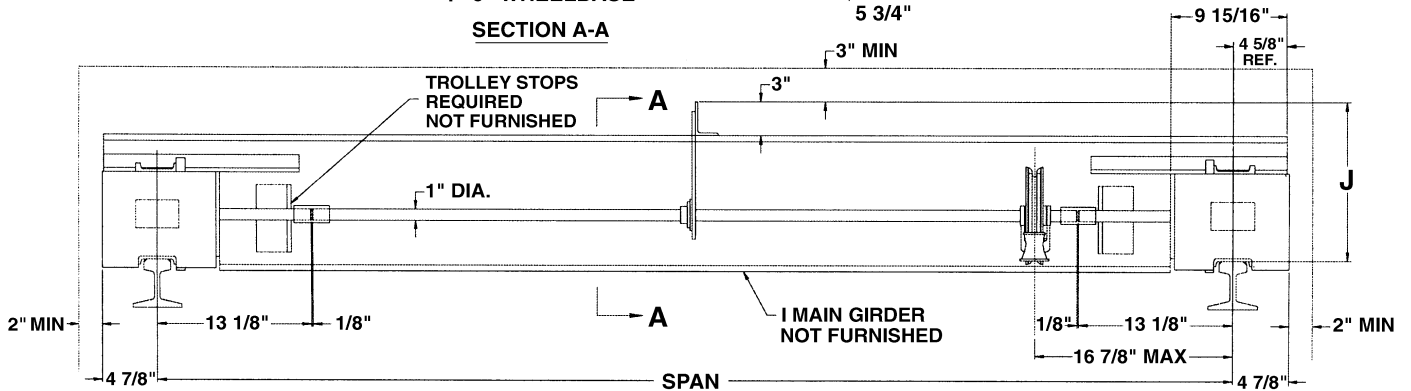


**Hand Geared**



Beams (Depth)	D
6", 7", 8", 10" & 12"	3-1/4"
15", 18" & 20"	4-3/4"

$J = 7 \frac{3}{4} + D + 3$



# Top-Running Motor Driven Bridge Crane Kits



Country Club Road  
P.O. Box 779  
Wadesboro, NC 28170 USA  
TEL: (800) 477-5003  
FAX: (800) 374-6853

## Motor Driven with Single Drive Top-Running Capacity 1/4 - 5 ton / Spans to 36 feet

Max. Capacity (tons)	Max. Span (ft)	Speed (fpm)	Kit Code	Kit Consists Of:					Approx. Shipping Weight (lbs)		
				End Trucks Code Number	Gear Reducer	Cross Shaft Support (Qty)	Cross Shaft Coupling (Qty)	Controls & Motors	1 Speed	2 Speed	
<b>Standard</b>											
1/4 thru 5	8	50	B05/08TC*50	904536 4'-6" WB	905378	Not Req'd	2	1 each Control 1 each 1/2 HP Motor 1 each Disconnect (see below)	529	554	
		70	B05/08TC*70		905377						
		100	B05/08TC*100		905376						
	15	50	B05/15TC*50		905378	1			2	544	569
		70	B05/15TC*70		905377						
		100	B05/15TC*100		905376						
	22	50	B05/22TC*50		905378	2			2	559	584
		70	B05/22TC*70		905377						
		100	B05/22TC*100		905376						
	29	50	B05/29TC*50		905378	3			3	576	601
		70	B05/29TC*70		905377						
		100	B05/29TC*100		905376						
	36	50	B05/36TC*50		905378	4			3	591	616
		70	B05/36TC*70		905377						
		100	B05/36TC*100		905376						

\*Specify: 1 = Single Speed  
2 = Two Speed

## Motor & Controls for Single Drive Top-Running Cranes

208 - 230 Volt			460 Volt			575 Volt		
1/2 HP Motor (1) req'd	Control (1) req'd	Disconnect Switch (1) req'd	1/2 HP Motor (1) req'd	Control (1) req'd	Disconnect Switch (1) req'd	1/2 HP Motor (1) req'd	Control (1) req'd	Disconnect Switch (1) req'd
<b>Single Speed</b>								
905381	44600381	905388	905381	44600383	905389	905382	44600384	905389
<b>Two Speed</b>								
905394	44600391	905388	905395	44600393	905389	905396	44600394	905389

Single Phase Available  
NEMA 1 Enclosures Standard  
Control panel includes mainline contactor, bridge fusing, reversing contactor and 115-volt control circuit transformer.

**Motor Driven with Dual Drive Top-Running**  
**Capacity 1/4 to 5 ton / Spans to 36 feet**

Max. Capacity (tons)	Max. Span (ft)	Speed (fpm)	Kit Code	Kit Consists Of:			Approx. Shipping Weight (lbs)	
				End Truck Code Number	Gear Reducer (Qty 2)	Controls & Motors	1 Speed	2 Speed
<b>Standard</b>								
1/4 thru 5	36	50	B05/36TD*50	904536 4'-6" WB	905378	1 each Control 2 each 1/2 HP Motor 1 each Disconnect (see below)	575	615
		70	B05/36TD*70		905377			
		100	B05/36TD*100		905376			

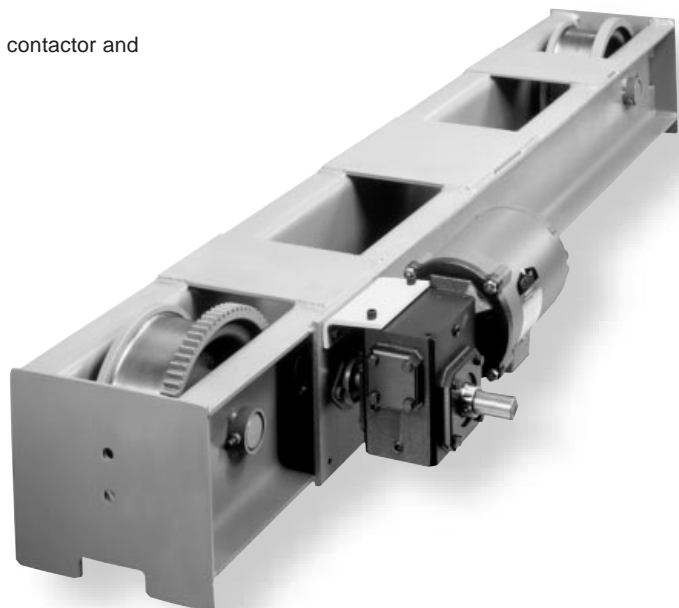
\*Specify: 1 = Single Speed  
2 = Two Speed

**Motor & Controls for Dual Drive Top-Running Cranes**

208 - 230 Volt			460 Volt			575 Volt		
1/2 HP Motor (2) req'd	Control (1) req'd	Disconnect Switch (1) req'd	1/2 HP Motor (2) req'd	Control (1) req'd	Disconnect Switch (1) req'd	1/2 HP Motor (2) req'd	Control (1) req'd	Disconnect Switch (1) req'd
<b>Single Speed</b>								
905381	44600311	913090	905381	44600383	905389	905382	44600384	905389
<b>Two Speed</b>								
905394	44600351	913090	905395	44600393	905389	905396	44600394	905389

Single Phase Not Available  
NEMA 1 Enclosures Standard

Control panel includes mainline contactor, bridge fusing, reversing contactor and 115-volt control circuit transformer.



**Top-Running  
Single Drive Kit**  
(Dual Drive Available)

# Top-Running Motor Driven Bridge Crane Kits

## Bridge Girder Beam Sizes For Top-Running Motor Driven Cranes American Standard I-Beams and Channel Selections

For Spans to (ft)	Rated Capacity* (tons)							
	1/4	1/2	1	1-1/2	2	3	4	5
10	S7x15.3	S7x15.3	S7x15.3	S10x25.4	S10x25.4	S12x40.8	S12x40.8	S12x40.8
12	S7x15.3	S7x15.3	S7x15.3	S10x25.4	S12x31.8	S12x40.8	S12x40.8	S18x54.7
14	S7x15.3	S7x15.3	S7x15.3	S10x25.4	S12x31.8	S12x40.8	S12x40.8	S18x54.7
16	S7x15.3	S7x15.3	S8x18.4	S10x25.4	S12x31.8	S12x40.8	S18x54.7	S18x54.7
18	S7x15.3	S8x18.4	S10x25.4	S12x31.8	S12x31.8	S18x54.7	S18x54.7	S20x66
20	S8x18.4	S8x18.4	S10x25.4	S12x31.8	S12x40.8	S18x54.7	S18x54.7	S20x66
22	S8x18.4	S10x25.4	S12x31.8	S12x40.8	S12x40.8	S18x54.7	S20x66	S20x66
24	S10x25.4	S10x25.4	S12x31.8	S12x40.8	S18x54.7	S20x66	S20x66	S24x80
26	S10x25.4	S10x25.4	S12x40.8	S18x54.7	S18x54.7	S20x66	S18x54.7C9x13.4	S24x80
28	S10x25.4	S12x31.8	S12x40.8	S18x54.7	S12x40.8C8x11.5	S18x54.7C9x13.4	S18x54.7C9x13.4	S20x66C9x13.4
30	S12x31.8	S12x31.8	S12x40.8	S18x54.7	S12x40.8C8x11.5	S18x54.7C9x13.4	S18x54.7C9x13.4	S20x66C9x13.4
32	S12x31.8	S12x40.8	S18x54.7	S12x40.8C8x11.5	S15x42.9C8x11.5	S18x54.7C9x13.4	S18x54.7C10x15.3	S20x66C9x13.4
34	S12x40.8	S12x40.8	S18x54.7	S15x42.9C8x11.5	S15x42.9C8x11.5	S18x54.7C9x13.4	S20x66C9x13.4	S20x66C9x13.4
36	S12x40.8	S12x40.8	S12x31.8C9x13.4	S15x42.9C8x11.5	S15x42.9C8x11.5	S18x54.7C12x20.7	S20x66C9x13.4	S20x66C12x20.7

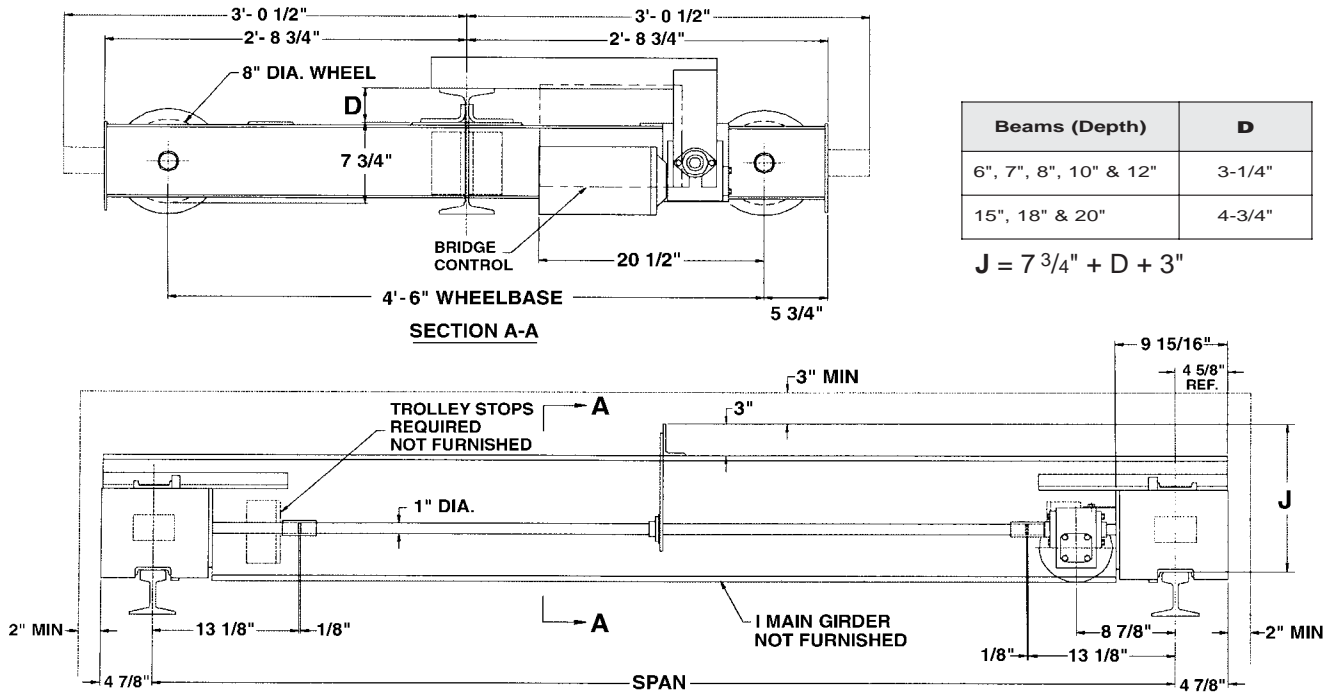
\*Rated capacity is based on maximum combined hoist and trolley weights of 500 pounds for 1/4, 1/2 and 1-ton hoists; 1100 pounds for 1 1/2 and 2-ton hoists; 1600 pounds for 3 and 4-ton hoists; 2000 pounds for 5-ton hoists. Bridge designed in accordance with CMAA Specification No. 74, revised 1987. Use ASTM A36 grade steel, first quality, free of rust and excessive mill scale.

## American Standard Wide Flange Beam Selections

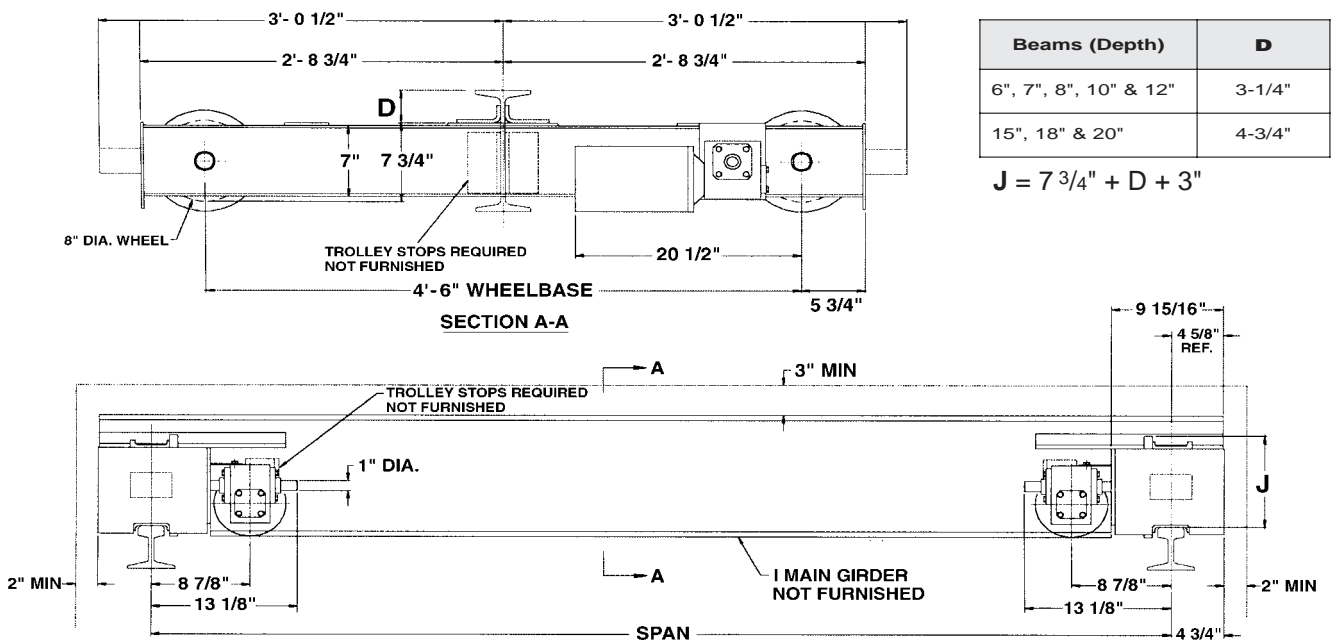
For Spans to (ft)	Rated Capacity* (tons)							
	1/4	1/2	1	1-1/2	2	3	4	5
10	W 6x12	W 6x12	W 8x15	W 10x19	W 12x22	W 12x35	W 18x40	W 18x46
12	W 6x12	W 6x12	W 8x15	W 10x19	W 10x26	W 12x35	W 18x40	W 18x46
14	W 6x12	W 6x12	W 8x18	W 10x26	W 14x26	W 14x38	W 10x45	W 16x50
16	W 6x12	W 8x15	W 8x18	W 10x26	W 10x30	W 18x40	W 16x45	W 14x53
18	W 8x15	W 8x18	W 8x21	W 10x26	W 10x30	W 18x40	W 18x46	W 16x57
20	W 8x18	W 8x18	W 8x21	W 10x30	W 10x30	W 10x45	W 12x50	W 16x57
22	W 8x18	W 8x21	W 10x26	W 10x30	W 12x35	W 16x45	W 16x50	W 16x57
24	W 8x18	W 8x21	W 10x26	W 14x34	W 14x38	W 14x48	W 14x53	W 18x65
26	W 8x21	W 10x26	W 10x30	W 12x35	W 12x40	W 12x50	W 16x57	W 18x65
28	W 10x22	W 10x26	W 10x33	W 12x40	W 12x40	W 14x53	W 18x65	W 18x71
30	W 10x26	W 10x30	W 12x35	W 12x40	W 12x45	W 14x53	W 16x67	W 14x74
32	W 10x26	W 10x30	W 14x38	W 12x45	W 14x48	W 14x61	W 16x67	W 16x77
34	W 10x30	W 14x34	W 12x40	W 14x48	W 14x53	W 16x67	W 16x67	W 16x89
36	W 10x30	W 12x35	W 12x40	W 14x53	W 14x61	W 16x67	W 16x77	W 16x89

\*Rated capacity is based on maximum combined hoist and trolley weights of 500 pounds for 1/4, 1/2 and 1-ton hoists; 1100 pounds for 1 1/2 and 2-ton hoists; 1600 pounds for 3 and 4-ton hoists; 2000 pounds for 5-ton hoists. Bridge designed in accordance with CMAA Specification No. 74, revised 1987. Use ASTM A36 grade steel, first quality, free of rust and excessive mill scale.

**Single Drive**



**Dual Drive**



## Top-Running

End truck frames are steel channel box section weldment for a strong, rigid construction. End truck plates serve as rail sweeps for bridge protection and anti-drop stops, as required by CMAA Specification No. 74. The standard truck wheelbase is 4'-6", suitable for spans to 36 feet, meeting the CMAA span to wheelbase ratio limit of 8 to 1. Wheels are 8" diameter of high strength ductile iron, with a hardness of 220 BHN. Wheels have cylindrical tread designed for a minimum recommended rail of ASCE 20 lbs. Maximum size runway rail for minimum CMAA Specification No. 74 float of 3/4" is ASCE 45 lbs. Width between wheel flanges is 2 3/4". Wheel bearings are lifetime lubricated precision ball bearings. They provide a minimum of 5000 hours performance in accordance with CMAA Specification No. 74. Maximum allowable wheel load (determined in accordance with CMAA Specification No. 74) is 6500 pounds (per pair).

## Underhung

The end truck is a rigid steel weldment, reinforced at the wheel axles and girder connection. The truck is welded of formed channel sides and structural steel plates complete with welded girder pads and end plates forming a rigid "U" shaped structure. The wheels are solid forged steel and rotate on two sealed lifetime-lubricated ball bearings. The wheels are heat treated with a hardness of 300 BHN. The single flange wheels have a compound tread for operation on American Standard I-beam or wide flange beams. Wheel diameter is 4 inch on 3-ton trucks and 6 1/2" inch on 5 ton trucks. Patented track wheels are available for both capacities. The push type and geared type underhung end trucks are designed in accordance with CMAA Specification No. 74. The maximum wheel load is determined in accordance with CMAA Specification No. 74.

## Gear Reducers

A right-angle, shaft mounted worm drive gear reducer can be mounted at either end of the bridge. The gear reducers can be mounted on either top running or underhung end trucks. Traverse reducer provides stopping motion of the bridge within a distance in feet equal to 10 percent of full load speed in feet per minute (traveling at maximum speed with maximum rated load).

	3-Ton Underhung	5-Ton Underhung	5-Ton Top Running	Catalog Number
Traverse Speed	110 fpm	100 fpm	100 fpm	905376
Traverse Speed	70 fpm	65 fpm	70 fpm	905377
Traverse Speed	55 fpm	50 fpm	50 fpm	905378

## Cross Shaft Support

The cross shaft support, with its anti-friction lifetime-lubricated bearings, support the cross shaft. For hand geared and single drive motor driven cranes, cross shafts are required. The cross shafts are to be 1" diameter AISI 1018 cold drawn steel.

## Cross Shaft Coupling

The cross shaft couplings connect the cross shaft to the pinion shaft at each end truck, as well as couple sections of cross shaft.

## Motor

Drive motor is a 1/2 horsepower, NEMA design 30-minute rated TENV with Class "F" insulation squirrel cage motor. The motor is provided with thermal overload protection as standard, C-faced mounted to the gear reducer. Single speed, two speed, three phase, and single phase motors are available. Voltages available in single and two speed are 208-230-460-575 Volt-3Ph-60Hz, Voltages available in single speed only are 115-230 Volt-1Ph-60 Hz. Consult factory for any other special speeds or voltages that are not shown.

## Control Panel

The control panels include mainline contactor, 115-volt control circuit transformer with fused secondary terminal strip, bridge fusing and reversing contactor in a NEMA 1 enclosure. NEMA 4/12 panels are available as an option.

## Fused Disconnect Switch

Fused disconnect switch box has positive power disconnect and crane fusing. NEMA 1 enclosure is standard with NEMA 4/12 available as an option.

## Bridge Brake (optional)

Bridge brake is a disc type that is available as an option. The bridge's standard drive reducer is a worm that will stop the crane within the CMAA and OSHA requirements.

**Electronic Acceleration Control (optional)**

The electronic acceleration control is a solid state device for controlling the torque and time of acceleration of the bridge crane. The electronic acceleration control provides a more controlled acceleration and is less load sensitive than conventional ballast resistors.

**Air Motor Drive Package – Catalog Number 904558 (optional)**

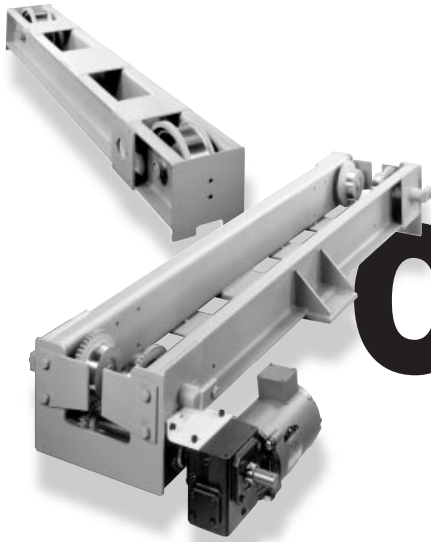
Air motor drive packages are available in capacities up to 5-tons and spans to 36 feet. They can be mounted on the formed channel type end trucks that have geared wheels and drive pinions. Only one drive is required. The package includes air motor, gear reducer, control head with pendant throttle and air hose assembly with an 8' drop. Variable traverse speeds from 0-70 fpm are achievable. Filter, lubricator and regulator are recommended options.

**Bridge Bumpers (optional)**

Heavy duty rubber bumpers help cushion bridge end stop impact.

**Other Options Available**

Variable Frequency Control  
Ballast Resistors  
Thermal Overload Relays  
Spark Resistance (Hand Geared and Push-Type Trucks)  
Patented Track



High Performance Lifting™

# COFFING® HOISTS

## WARRANTY

Every hoist is thoroughly inspected and tested prior to shipment from the factory. Should any problems develop, return the complete hoist prepaid to your nearest Coffing® Authorized Warranty Repair Station. If inspection reveals that the problem is caused by defective workmanship or material, repairs will be made without charge and the hoist will be returned, transportation prepaid.

This warranty does not apply where: (1) deterioration is caused by normal wear, abuse, improper or inadequate power supply, eccentric or side winding, overloading, chemical or abrasive actions, improper maintenance or excessive heat; (2) problems resulted from repairs, modifications or alterations made by persons other than

factory or Coffing Authorized Warranty Repair Station personnel; (3) the hoist has been abused or damaged as a result of an accident; (4) repair parts or accessories other than those supplied by Coffing are used on the hoist. Equipment and accessories not of the seller's manufacture are warranted only to the extent that they are warranted by the manufacturer.

**EXCEPT AS STATED HEREIN, COFFING HOISTS MAKES NO OTHER WARRANTIES, EXPRESSED OR IMPLIED, INCLUDING WARRANTIES OF MERCHANTABILITY AND FITNESS FOR A PARTICULAR PURPOSE.**

This publication contains specifications and clearances for single girder crane kits with spans to 36' and capacities to 5-ton. These bridge kits are available in a wide variety to meet the exact requirements of your crane application.

## ⚠ WARNING

### Overloading and Improper Use Can Result In Injury

#### To Avoid Injury:

- **DO** Read, Apply, and Install Per Assembly Manuals.
- **DO** Install Trolley Stops.
- **DO NOT** Exceed Maximum Capacity.
- **DO NOT** Use to Lift People or Loads Over People.

Coffing Hoists • Country Club Road • P.O. Box 779 • Wadesboro, North Carolina 28170 USA

Tel: (800) 477-5003 • (704) 694-2156 • Fax: (800) 374-6853 • (704) 694-6829