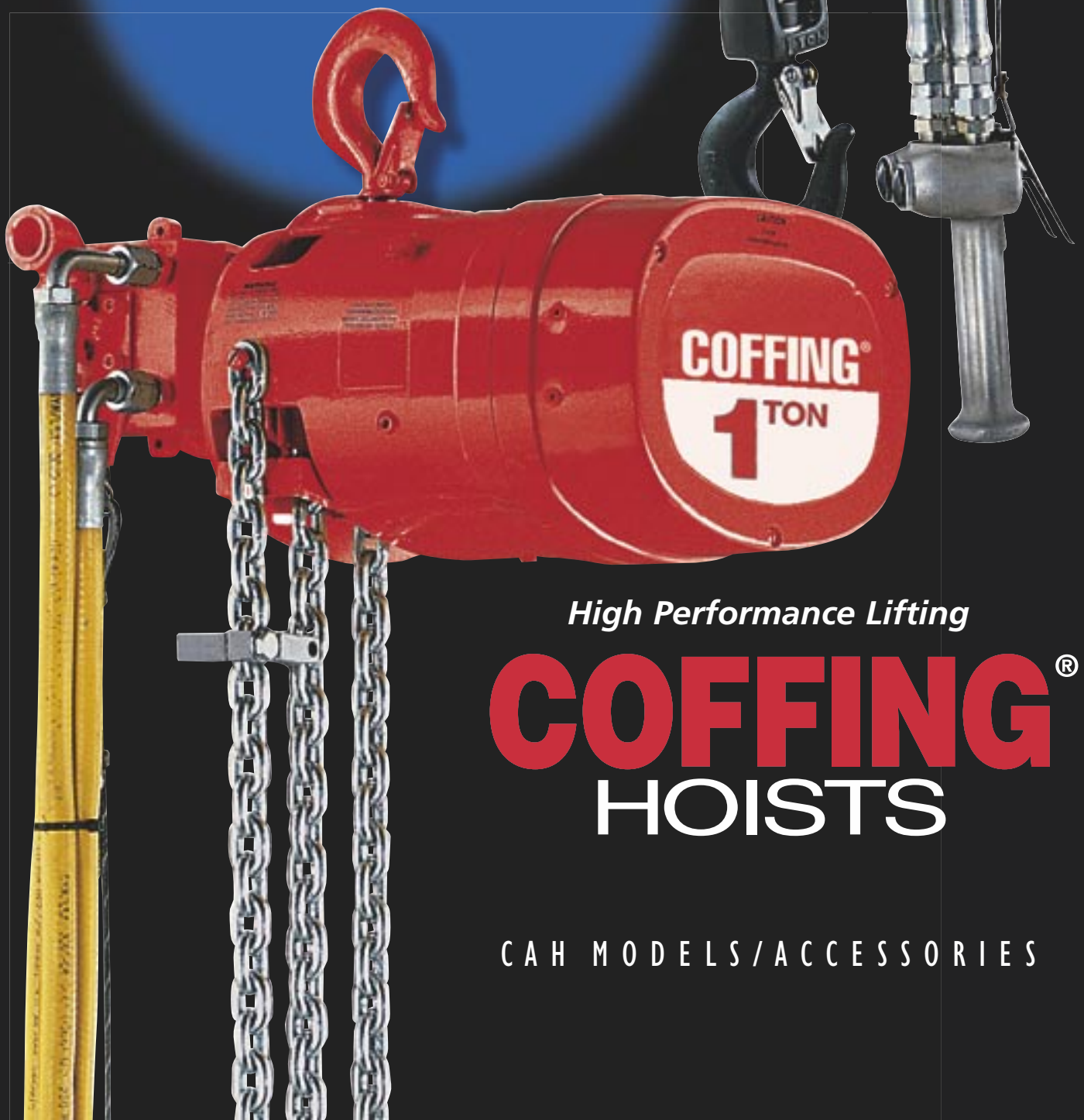


ALTER POWER



High Performance Lifting

COFFING[®] HOISTS

CAH MODELS/ACCESSORIES

AIRER

Planetary Gearing

Heat treated alloy steel spur gears are accurately machined to provide a close meshed, compact gear reduction.

Aluminum Frame, Cover, and Control Head

Lightweight and portable. Designed for strength and ruggedness.

Inlet Air Swivel

Provides free hoist movement with built-in screen.

Heavy Duty Shoe-Type Brake

Proven design for stopping and holding in heavy-duty applications. Externally adjustable.

Limit Lever

Prevents overtravel in both lifting and lowering directions.

8-Vane Motor

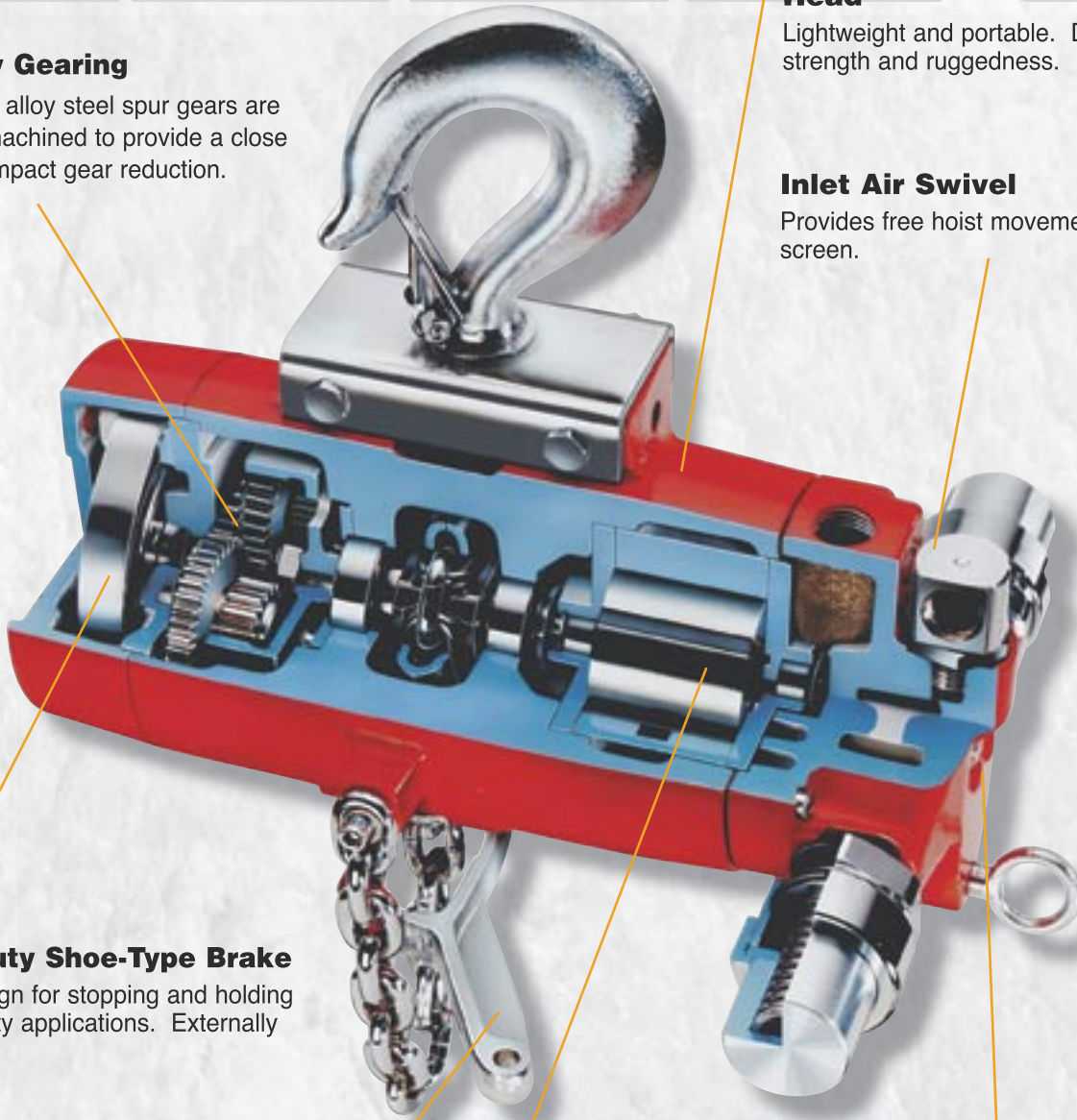
Provides high-torque, smooth starts, and excellent control.

External Speed Adjustment Screws

Convenient adjustment for both lifting and lowering speeds.

Controls

Pull cord provides an economical option for accurate load control. Pendant throttle offers ergonomic one-hand control for ease of operation.



Continuous Duty - Precise Positioning

Model CAH Air Powered Hoist

Coffing Small Frame, Model CAH - Small frame air chain hoists features accurate load spotting for specialized lifting applications.

- **CAPACITIES & LIFT** - Rated loads of 1/4, 1/2, and 1 ton. 10-foot standard lift, longer lifts available.
- **CONTROLS** - **Pull Cord** provides a lightweight, economical option for accurate control of loads. **Pendant Throttle** provides one-hand control, for ease of operation. 6-foot control drop length for 10-foot lift (4-foot less than lift—standard).
- **CHAIN OPTIONS** - Link-type or roller-type load chain.
- **SUSPENSION** - Swivel top and bottom hooks with safety latches standard. Rigid top hook, lug, plain, geared, and air motor trolleys available.
- **COMPACT CONSTRUCTION** - Ideal for use in areas with restricted space. Aluminum housing provides strength and portability.
- **MOTOR** - 8-vane motor provides high torque, smooth starting, and excellent load control.
- **LIMIT STOPS** - Prevent over-travel in upper and lowering directions.
- **BRAKE** - Heavy-duty shoe-type with proven design for stopping and holding loads. Externally adjustable.
- **SPARK RESISTANT MODELS** - Rated loads of 3/8 and 3/4 ton.
- **OPTIONS** - Chain container available. Plated chain optional for corrosion resistance.
- **AIR SUPPLY** - Inlet size: 3/8" NPTF; Supply hose: 1/2" I.D. min. Exhaust: 1/2" NPTF; Consumption: 48 SCFM at 90 PSI.
- **LIFETIME WARRANTY**



SPECIFICATIONS

Model CAH Air Hoists - Small Frame

Capacity Lbs.	Ton	Type Chain	Model Number Controls		Number of Chains	Lift Speeds** (FPM)		‡ Headroom (in.)	Air Pressure (PSI)	Net † Weight (Lbs.)
			Pull Cord	Pendant Throttle*		Lifting	Lowering			
500	1/4	Link	CAH-0565-LC	CAH-0565-LP	1	65	95	15 1/4	90	36
1000	1/2	Link	CAH-1045-LC	CAH-1045-LP	1	45	120	15 1/4	90	36
2000	1	Link	CAH-2023-LC	CAH-2023-LP	2	23	60	18	90	49
500	1/4	Roller	CAH-0565-RC	CAH-0565-RP	1	65	95	15 1/4	90	37
1000	1/2	Roller	CAH-1045-RC	CAH-1045-RP	1	45	120	15 1/4	90	37
2000	1	Roller	CAH-2023-RC	CAH-2023-RP	2	23	60	18	90	51

Spark Resistant Models

750	3/8	Link	CAH-0760-CS	CAH-0760-PS	1	60	100	15 1/4	90	36
1500	3/4	Link	CAH-1529-CS	CAH-1529-PS	2	29	52	18	90	49

* Equipped w/ 6-foot pendant control. **NOTE:** For complete dimensional data, refer to Coffing Dimensional Databook.

‡ Headroom dimension given for swivel top hook suspension only.

† Add 10 lbs. to Pull Cord Model for Net Weight on Pendant Model.

** Speeds based on 90 PSI line pressure and with full rated load. **NOTE:** Hoist speeds are adjustable and can be reduced. Shipped from factory w/ hoisting speed set to maximum rated speed; lowering speed set at rated speed.

Aluminum Frame & Cover

Lightweight aluminum housing offers:

- Rugged holding shafts and bearings in close alignment

Infinitely Variable Speed Control

Full-flow pendant design offers operator exacting throttle control:

- Precise throttle valves meter air flow for smooth operation

Multi-Vane Rotary Air Motor

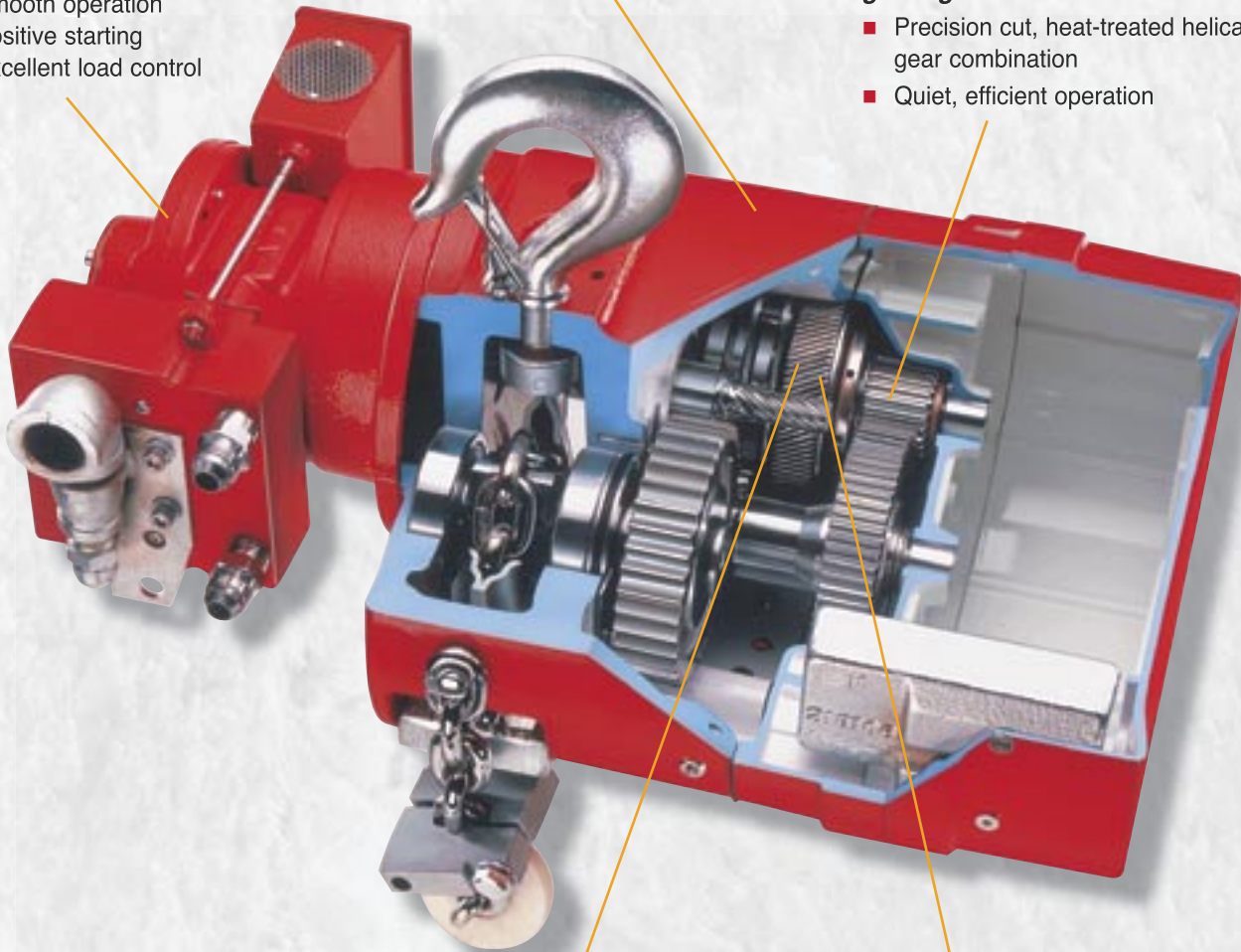
8-vane rotary design provides:

- High torque
- Smooth operation
- Positive starting
- Excellent load control

Combination Gearing

Model CAH hoists combine efficient gearing that features:

- Precision cut, heat-treated helical and spur gear combination
- Quiet, efficient operation



Spark Resistant Models

Lower speed, medium duty models for hazardous environments are available with these features:

- Bronze alloy hooks and stainless steel latches
- Chrome nickel non-magnetic stainless steel alloy load chain
- Bronze limit stop with aluminum limit actuators and modified sprocket and guide

Mechanical Load Brake

Positive acting Weston-type load brake:

- Holds the load effectively
- Provides exacting load spotting and control

Overload Protection

Overload device helps ensure smooth, safe operation:

- Protects against excessive overloads
- Clutch acts as upper and lower limits of chain travel

Variable Speed Control

Model CAH Air Powered Hoist



1/2 - 3 Ton
Made In USA

Coffing Large Frame, Model CAH - Large frame air chain hoists featuring continuous duty service for precise, infinitely variable speed and accurate load spotting.

- **CAPACITIES & LIFT** - Rated loads of 1, 2 & 3 ton. 10-foot standard lift, longer lifts available.
- **CONTROLS** - Pendant throttle is full-flow design. 6-foot pendant hose length for 10-foot lift (4-foot less than lift—standard).
- **THROTTLE VALVE** - Precision throttle valves meter air for smooth starts.
- **SUSPENSION** - Swivel top and bottom hooks with safety latches standard. Rigid top hook, lug, plain, geared, and air motor trolleys available.
- **SPEEDS** - Precise and infinitely variable speed control for accurate load spotting. 90 PSI air operating pressure.
- **ALUMINUM HOUSING** - Lightweight, compact, and strong.
- **MOTOR** - 8-vane rotary air motor produces high, uniform torque and quick response. Internal muffler for quiet operation.
- **GEARING** - Combination of precision cut, heat-treated helical and spur gears for efficient operation.
- **MECHANICAL LOAD BRAKE** - Positive acting Weston-type load brake holds the load and provides exacting load spotting and control.
- **OVERLOAD CLUTCH** - Protects hoist, operator, and supporting structures from damaging overloads. Clutch acts as upper and lower limits.
- **SPARK RESISTANT MODELS** - Rated loads 1/2, 1 & 2 ton.
- **OPTIONS** - Corrosion resistant models and chain containers also available.
- **AIR SUPPLY** - Inlet size: 3/4" NPTF; Supply hose: 3/4" I.D. min.
- **LIFETIME WARRANTY**

SPECIFICATIONS

Model CAH Air Hoists - Large Frame

Capacity (Lbs.)	(Tons)	Model Number	Number of Chains	Lift Speeds * (FPM)		‡ Headroom (In.)	Air Pressure (PSI)	Net Weight (Lb.)
				Lifting	Lowering			
2000	1	CAH-2013	1	13	18	16 ⁹ / ₁₆	90	93
2000	1	CAH-2030	1	30	42	16 ⁹ / ₁₆	90	95
4000	2	CAH-4006	2	6	9	22 ¹ / ₄	90	110
4000	2	CAH-4015	2	15	21	22 ¹ / ₄	90	112
6000	3	CAH-6004	3	4	6	24	90	144
6000	3	CAH-6010	3	10	14	24	90	146

Spark Resistant Models

1000	1/2	CAH-0516-S	1	16	22	16 ³ / ₄	90	95
2000	1	CAH-1008-S	2	8	11	22 ⁷ / ₈	90	112
4000	2	CAH-2005-S	3	5	7	25 ⁷ / ₈	90	146

* Speeds based on 90 PSI line pressure and with full rated load.

‡ Headroom dimension given for swivel top hook suspension only.

Air Consumption: 70 SCFM (full load - full speed) slow speed model; 80 SCFM (full load - full speed) fast speed model.

Standard lift 10 ft.
Longer lifts are available

NOTE: For complete dimensional data, refer to Coffing Dimensional Databook.

Smooth Rolling, Economical

Model HT Trolley



1/4 - 3 Ton
Made In USA

Coffing Model HT - Hook suspension trolleys are available in plain and hand-gear versions to operate on either American Standard I-beams or wide flange beams.

- **CAPACITIES** - Rated loads from 1/4 to 3 ton; plain and geared models.
- **PLAIN TROLLEY** - For manual positioning of hoist and load.
- **GEARED TROLLEY** - For more precise positioning of hoist and load. Geared trolleys have standard 9' 6" hand chain drop.
- **CONSTRUCTION** - Trolley side plates are all-steel for maximum strength. Wheels are steel with hardened treads and roller bearings for easy traversing and long life. Spark resistant models have beryllium copper wheels.
- **ADJUSTABLE** - Trolley easily adjusts to fit any beam flange within range of adjustment.
- **UNIQUE DESIGN** - For use with hook suspension Coffing CAH air hoists.
- **WRAP-AROUND SIDE PLATES** - Act as safety lugs to increase operator safety and as bumpers to protect wheels.
- **OPTIONS** - Spark resistant models available 1/2 to 2 ton.
- **METRIC RATED** - 1/4 to 2 ton plain trolley; 1 & 2 ton geared trolley.
- **LIFETIME WARRANTY**

SPECIFICATIONS

Model HT Plain & Geared Trolleys

Capacity Lbs.	Ton	Model Number*	Min. Beam Height (In.)	I-Beam Width (In.)	Min. Radius Curve (In.)	Wheel Tread Diameter (In.)	Net Weight (Lbs.)	
							Plain	Geared
500	1/4	HT-05-P	4	2 ⁵ / ₈ to 4 ⁵ / ₈	30	3 ¹ / ₈	13	—
1000	1/2	HT-10-P	4	2 ⁵ / ₈ to 4 ⁵ / ₈	30	3 ¹ / ₈	13	—
2000	1	HT-20-P(G)	5	3 to 5	36	4	25	45
2000	1	HT-20-WP(G)	5	5 to 7	36	4	26	46
2000	1	HT-20-WFP(G)	5	7 to 9	36	4	27	47
4000	2	HT-40-P(G)	6	3 ³ / ₈ to 6	48	4 ¹⁵ / ₁₆	35	48
4000	2	HT-40-WP(G)	6	6 to 8	48	4 ¹⁵ / ₁₆	36	49
4000	2	HT-40-WFP(G)	6	8 to 10	48	4 ¹⁵ / ₁₆	37	50
6000	3	HT-60-P(G)	6	3 ³ / ₈ to 6	48	4 ¹⁵ / ₁₆	41	65
6000	3	HT-60-WP(G)	6	6 ¹ / ₈ to 8 ⁷ / ₈	48	4 ¹⁵ / ₁₆	43	67
6000	3	HT-60-WFP(G)	6	9 to 11	48	4 ¹⁵ / ₁₆	44	68

Spark Resistant Models

1000	1/2	HT-10-S	4	2 ⁵ / ₈ to 4 ⁵ / ₈	30	3 ¹ / ₈	13	—
2000	1	HT-20-S(G)	5	3 to 5	36	4	25	45
4000	2	HT-40-S(G)	6	3 ³ / ₈ to 6	48	4 ¹⁵ / ₁₆	35	48

* When ordering, specify "P" for Plain Trolley or "G" for Geared Trolley. Hand geared trolleys have standard hand chain drop of 9' - 6". Longer chain available.

NOTE: For complete dimensional data, refer to Coffing Dimensional Databook.

Secure, Easily Adjustable

Model LT Trolley

Coffing Model LT - Rigid mount trolleys designed especially for use with lug suspended hoists. Trolleys mount directly to lug suspended hoists, forming integral trolley-hoist combinations.

- **CAPACITIES** - Rated loads of 1/4 to 3 ton in plain and geared models.
- **PLAIN TROLLEY** - For manual positioning of hoist and load — 1/4 to 3 ton models.
- **GEARED TROLLEY** - For more precise positioning of hoist and load. Geared trolleys have standard 9' 6" hand chain drop—1 to 3 ton models.
- **CONSTRUCTION** - All steel construction for maximum strength. Wheels have hardened treads, ensuring long life, and operate on ball bearings for easy travel.
- **UNIQUE DESIGN** - For lug suspension Coffing CAH air hoists.
- **LOW HEADROOM** - Integral trolley-hoist combinations allows maximum hook travel.
- **OPTIONS** - Spark resistant models available 3/8 to 2 ton. Heavy-duty trolleys available for lug mounting to all air hoist models.
- **LIFETIME WARRANTY**



1/4 - 3 Ton
Made In USA

SPECIFICATIONS

Model LT Plain & Geared Trolleys

Capacity		Model Number*	Min. Beam Height (In.)	I-Beam Width (In.)	Min. Radius Curve (In.)	Wheel Tread Diameter (In.)	Net Weight (Lbs.)	
Lbs.	Ton						Plain	Geared
†500	1/4	LT-05-P	4	2 ⁵ / ₈ to 4 ⁵ / ₈	30	3 ¹ / ₈	15	—
†1000	1/2	LT-10-P	4	2 ⁵ / ₈ to 4 ⁵ / ₈	30	3 ¹ / ₈	15	—
†2000	1	LT-20-P(G)	5	3 to 5	42	4	23	40
†2000	1	LT-20-WP(G)	5	5 ¹ / ₄ to 7 ³ / ₈	42	4	24	41
4000	2	LT-40-P(G)	6	3 ³ / ₈ to 6	48	4 ¹⁵ / ₁₆	43	57
4000	2	LT-40-WP(G)	6	6 ¹ / ₄ to 8 ⁷ / ₈	48	4 ¹⁵ / ₁₆	44	58
6000	3	LT-60-P(G)	6	3 ³ / ₈ to 6	48	4 ¹⁵ / ₁₆	50	65
6000	3	LT-60-WP(G)	6	6 ¹ / ₈ to 8 ⁷ / ₈	48	4 ¹⁵ / ₁₆	52	67
6000	3	LT-60-WFP(G)	6	9 to 11	48	4 ¹⁵ / ₁₆	54	68

Spark Resistant Models

750	3/8	LT-07-S	4	2 ⁵ / ₈ to 4 ⁵ / ₈	30	3 ¹ / ₈	15	—
1000	1/2	LT-10-S(G)	5	3 to 5	42	4	23	40
1500	3/4	LT-15-S(G)	5	3 to 5	42	4	23	40
2000	1	LT-20-S(G)	6	3 ³ / ₈ to 6	48	4 ¹⁵ / ₁₆	45	57
4000	2	LT-40-S(G)HD**	8	4 ³ / ₈ to 6 ¹ / ₄	48	4	85	100

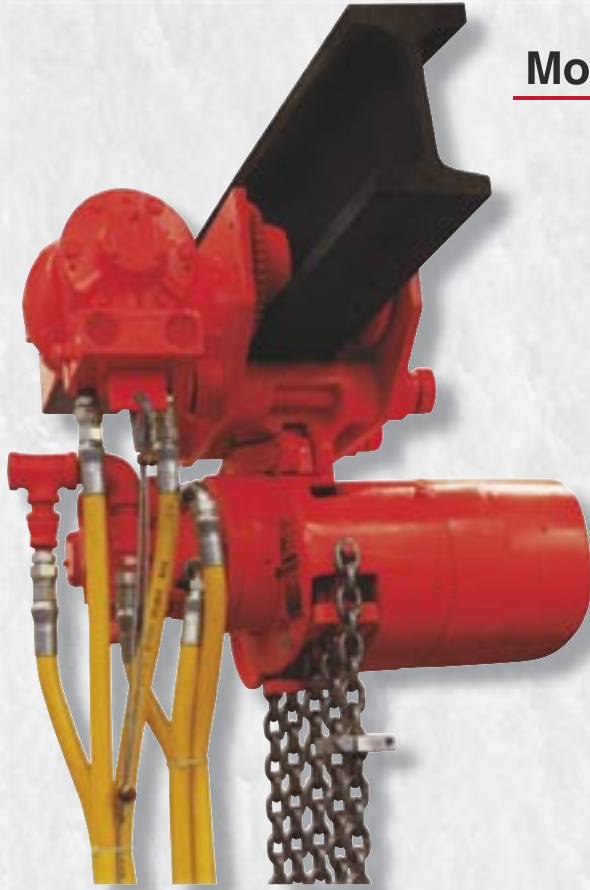
* When ordering, specify "P" for Plain Trolley or "G" for Geared trolley. Hand geared trolleys have standard hand chain drop of 9' - 6". Longer chain available.

† Metric Rated Trolleys

** Heavy-Duty Model — wide flange options available — consult factory.

NOTE: For complete dimensional data, refer to Coffing Dimensional Databook.

Smooth Control—Riding On Air



1/4 - 3 Ton
Made In USA

Model AMT Air Motor Driven Trolley

Coffing Model AMT - Designed to operate with Coffing CAH air chain hoists for faster positioning of the hoist in a variety of lifting applications.

- **CAPACITIES** - Rated loads from 1/4 to 3 ton.
- **SPEEDS** - Variable up to 50 FPM 1/4 to 1 ton and up to 60 FPM 2 and 3 ton.
- **8-VANE MOTOR** - Provides high torque, smooth starting, and excellent control.
- **EXTENDED SIDE PLATES** - Steel frame side plates extend beyond wheels for end stop contact. Sideplates have tapped holes suitable for bracket attachments such as festooning arms or safety lugs.
- **WHEELS** - Forged, heat-treated steel, with dual tread for use on Standard or wide flange beams. Wheel bearings are sealed, life-time-lubricated precision ball bearings.
- **CONTROLS** - Pendant throttle control provides precise, controlled spotting and efficient load handling.
- **OPTIONS** - Spark resistant models. Rated loads 3/8 - 2 ton. For areas where spark protection is required in hazardous environments. Same features apply to these models with the addition of spark resistant bronze wheels.
- **AIR SUPPLY** - Consumption: 50 SCFM; Pressure: 90 PSI.
- **LIFETIME WARRANTY**

SPECIFICATIONS

Model AMT Air Powered Trolley

Capacity		Model Number	Traverse Speed (FPM)	Min. Beam Height (In.)	Standard (In.)	Flange Width		Min. Radius Curve (In.)	Wheel Tread Diameter (In.)	Net Weight (Lbs.)
Lbs.	Ton					First Extension (In.)	Second Extension (In.)			
500	1/4	AMT-0550	50	6	3 to 5	5 1/8 to 7 1/4	7 1/2 to 9 1/8	36	4	95
1000	1/2	AMT-1050	50	6	3 to 5	5 1/8 to 7 1/4	7 1/2 to 9 1/8	36	4	95
2000	1	AMT-2050	50	6	3 to 5	5 1/8 to 7 1/4	7 1/2 to 9 1/8	36	4	95
4000	2	AMT-4060	60	7	3 5/8 to 6	6 1/4 to 8 5/8	8 7/8 to 11 1/4	48	4	105
6000	3	AMT-6060	60	8	4 to 6 1/4	6 3/8 to 8 5/8	8 3/4 to 11	48	4	150

Spark Resistant Models

750	3/8	AMT-0750-S	50	6	3 to 5	5 1/8 to 7 1/4	7 1/2 to 9 1/8	36	4	95
1000	1/2	AMT-1050-S	50	6	3 to 5	5 1/8 to 7 1/4	7 1/2 to 9 1/8	36	4	95
1500	3/4	AMT-1550-S	50	6	3 to 5	5 1/8 to 7 1/4	7 1/2 to 9 1/8	36	4	95
2000	1	AMT-2060-S	60	7	3 5/8 to 6	6 1/4 to 8 5/8	8 7/8 to 11 1/4	48	4	105
4000	2	AMT-4060-S	60	8	4 to 6 1/4	6 3/8 to 8 5/8	8 3/4 to 11	48	4	150

NOTE: Equipped with 7-foot pendant control hose. **NOTE:** For complete dimensional data, refer to Coffing Dimensional Databook.

How To Determine Your Air Hoist Requirements

Hoist Capacity

Determine the maximum load to be lifted. If the load falls between standard rated capacities, always select the higher capacity (i.e., for 4,300 lb. maximum load, use 6,000 lb., or 3-ton capacity hoist).

Hoist Lift

To determine the total lift required, measure the distance from the bottom of the beam to the lowest point on the floor to be reached and subtract the hoist headroom dimension shown in the specifications. The remaining distance is the lift required on the hoist. Always select a standard lift equal to or greater than the distance.

Duty Cycle

Air motors inherently are self-cooling during operations. Unlike an electric motor which heats during operation, air motors are suitable for unlimited “on-time” and unlimited “number of starts”. Coffing® CAH model air hoists are desirable for duty cycles demanding 100% “on-time”.

Explosive Atmosphere

Since air hoists operate on compressed air, there is no electrical arcing hazard to cause explosions in such areas as paint spraying and petrochemical facilities. For those hazardous atmosphere applications where resistance to friction sparks is vitally important, spark resistant models are available. Spark resistant features include: bronze alloy hooks, stainless steel hook latches, non-magnetic, stainless steel load chain; modified load sprocket, guide and stripper arrangement; and stainless steel or anodized aluminum lower blocks. Since stainless steel load chain is of lower strength than standard, CAH spark resistant models are de-rated in capacity.

Control

Normally, air hoists lift loads at a faster rate of speed than electric hoists. Additionally, air hoists have variable speed control to lift loads from creep speed to full speed. Applications requiring variable speed lifting for precise load spotting and smooth starting action should employ an air hoist. Also to be considered are pull cord or pendant throttle as the means for operator control of the hoist and load.

Hoist Suspension

Coffing® CAH model air hoists can be offered in a wide variety of suspension options. Hook type suspension offer maximum versatility and portability in most environments. Lug suspensions save headroom and can be used with rigid mount trolleys or in permanently mounted locations.

Trolley Type

There are three standard trolley types that can be used to suspend Coffing® CAH model air hoists.

Push Trolley — Recommended for light capacities up to 2-tons and lifts below 20 feet. Most economical.

Hand Geared Trolley — Offers precise control for load spotting. Most favorable for higher capacities, short mono-rails, and where lifts exceed 20 feet.

Air Motor Driven Trolley — Most widely used method of suspension, particularly 2-ton capacity and above. Often a necessity where long monorails are used.

Special Note

The installation of every air hoist must include a filter and lubricator in the air line. An air regulator is also recommended.

More Coffing Air Power...

The TMM-140A Air Manipulator and Air Balancer

In addition to the CAH line of air hoists, the Coffing TMM-140A Air Manipulator and the Air Balancer offer great versatility in specialized material lifting and positioning applications.

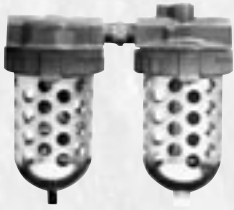
TMM-140 Air Manipulator is ideal for workstation applications. Lightweight and portable, the unit weighs less than 20 lbs. and operates at 100% duty cycle. Capacity: 300 lb. / 140 Kg.

The Coffing Air Balancer offers versatile float capability — quick, effortless, precise positioning of materials is easily accomplished. Capacity: Up to 500 lbs. (600 lbs. for double-reeved models).

For more information, please request Coffing publications:

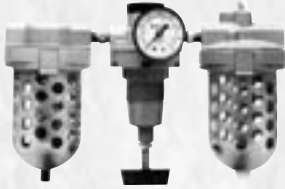
CB-18 TMM-140A Air Manipulator; **CAB-1** Air Balancer





FILTER-LUBRICATOR UNITS

Air hoists must have a supply of clean, lubricated air for their operation. A filter and lubricator must be installed in the air supply line, as close as practical to the hoist. The recommended operating air pressure for all capacities of COFFING® air hoists is 90 PSI. When air line pressure exceeds 115 PSI, it is required that a pressure regulator be provided in the supply line to maintain proper pressure.



FILTER-LUBRICATOR UNITS			
Model Number	Inlet/Outlet Size in Inches	Bowl Size	Shipping Wt. in Lbs.
C902960	3/8	11 oz.	8
C902961	1/2	11 oz.	8
C902962	3/4	24 oz.	12
C902963	1	24 oz.	12

FILTER-REGULATOR-LUBRICATOR UNITS			
Model Number	Inlet/Outlet Size in Inches	Bowl Size	Shipping Wt. in Lbs.
C902966	3/8	11 oz.	14
C902967	1/2	11 oz.	14
C902968	3/4	24 oz.	18
C902969	1	24 oz.	18



BULLARD HOOKS

All hoists are furnished as standard with hooks equipped with hook latches. Bullard Hooks with a rugged cast swing gate locking member that provides greater assurance of load containment are available at additional cost.



REDUNDANT SUPPORT

Hoist suspension redundant support for the CAH-Small Frame hoist is available for additional cost. This redundant support features a cable that inserts through the hoist frame and around initial support.

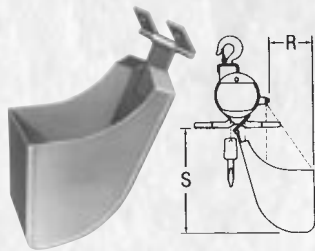


PENDANT THROTTLE CONVERSION KIT

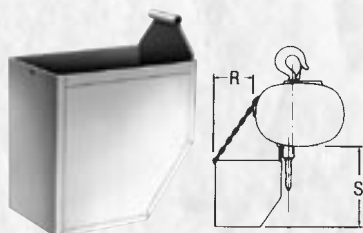
Kit for converting the pull cord CAH-Small Frame COFFING® Air Hoist to pendant throttle operation has a standard 6-foot pendant hose assembly. Longer hose assemblies available. Order Model No. C2269. Shipping weight is 8 pounds.

CHAIN CONTAINERS

Chain containers provide an ideal means for eliminating hanging tail chains. They are easily installed and accept the chain in such a way that chains tend not to kink or twist. State codes often specify the use of a chain container with each hoist.



CHAIN CONTAINER FOR CAH-Small Frame Air Hoists						
Model Number	Chain Type	Maximum Lift in Feet		Shipping Wt. in Lbs.	Dimension	
		1/4, 3/8, 1/2 Ton	3/4, 1 Ton		R	S
C902631	Link Chain	25	12	4 1/2	4 1/2	12
C902635	Link Chain	45	22	9		17
C902634	Link Chain	25	12	5		12
C902636	Spark Resistant	45	22	10	7	
C902632	Roller Chain	15	—	6 1/2	9	17 1/2
C902633	Roller Chain	30	15	11	12 1/2	22 1/4

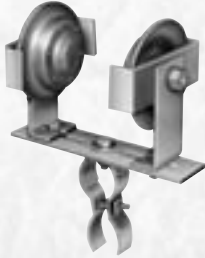


CHAIN CONTAINER FOR CAH-Large Frame Air Hoists						
Model Number	Maximum Lift in Feet			Shipping Wt. in Lbs.	Dimension	
	1 Ton	2 Ton	3 Ton		R	S
C905434	15	do not use	do not use	4	4 1/2	10
C905435	30	15	10	8		15
C905436	45	22	15	10		19
C905437	60	30	20	14		23
C905438	75	37	25	15		28
C905439	90	45	30	16		33

SPARK RESISTANT						
Model Number	Maximum Lift in Feet			Shipping Wt. in Lbs.	Dimension	
	1/2 Ton	1 Ton	2 Ton		R	S
C905444	15	do not use	do not use	4	4 1/2	10
C905445	30	15	10	8		15
C905446	45	22	15	10		19
C905447	60	30	20	14		23
C905448	75	37	25	15		28
C905449	90	45	30	16		33

AIR HOSE ASSEMBLY

Complete Air Hose Assembly requires ordering Air Supply Hose and Fittings.



AIR SUPPLY HOSE					
Model Number	ID (in.)	OD (in.)	Braid	Max. PSI	Width (ft.)
C901610	1/2	15/16	1	200	0.33
C901611	3/4	1 1/4	2	225	0.52
C901612	1	1 1/2	3	200	0.65

FITTINGS*		
Male Swivel at One End – Standard Male at Opposite End		
Model Number	Hose ID (in.)	Thread Size M-NPT
C901614	1/2	3/8
C901615	3/4	3/4
C901616	1	3/4

FITTINGS WITH QUICK DISCONNECT*		
Quick Disconnect on One End – Standard Male at Opposite End		
Model Number	Hose ID (in.)	Thread Size M-NPT
C901618	1/2	3/8
C901619	3/4	3/4
C901620	1	3/4

* Fittings installed on above hose.

* Fittings installed on above hose.
** 3/4 NPT Quick Disconnect is without Check Valve.

AIR HOSE TROLLEYS MODEL NO. C254

These trolleys are used to support air hose and are installed on the same track as a hoist. Hose clamp swivels and will fit 5/8 to 1 1/2 inch diameter hoses.



RECOIL AIR HOSE WITH FITTINGS

For application where air hose trolleys with looped hose is impractical: coil type self-storing hose is recommended.

SELF STORING AIR HOSE WITH FITTINGS			
Model Number	Hose Size (I.D. In.)	Working Length Feet	Fittings Each End
C901621	1/2"	x 15'	3/8 NPTF Male Swivel Fittings
C901622	1/2"	x 25'	3/8 NPTF Male Swivel Fittings
C901624	3/4"	x 15'	3/4 NPTF Male Swivel Fittings
C901625	3/4"	x 25'	3/4 NPTF Male Swivel Fittings
C901626	3/4"	x 50'	3/4 NPTF Male Swivel Fittings

NYLON COATED CABLE WITH EYEBOLT FITTINGS EACH END FOR SUPPORTING RECOIL AIR HOSE (Supports by Others)	
Model Number	Length in Feet
C901629	25'
C901630	50'



AIR HOSE REELS

Whichever hose-use problem you may have – on the production line, in the shipping area or in maintenance – these automatic retracting reels can provide the solution. Easy-set mounting lugs and adjustable 4-roller guides allow variable mounting for ceiling, wall, bench or trucks. An instant-action ratchet lock engages when hose travel stops, disengages with a slight pull. Other features include the “Safe-to-Change” spring motor which is self-contained for safe handling and all-steel construction for maximum reliability. Hose and ball stop are included. Pivot Base is optional.

Hose Data			Reel Model Number	NPTF Fittings E* & F	Weight Complete Lbs.	340° Base (OPT)
Inch I.D.	Feet Hose	PSI Max				
3/8	25	200	C913207	0.38 - 18	36	913083
3/8	35	200	C913208	0.38 - 18	40	913083
3/8	50	200	C913209	0.38 - 18	72	913098
1/2	25	200	C913210	0.50 - 14	70	913098
1/2	35	200	C913211	0.50 - 14	74	913098
1/2	50	200	C913212	0.50 - 14	79	913098
3/4	20	300	C913201	0.75 - 0.75	144	913206
3/4	30	300	C913202	0.75 - 0.75	149	913206
1	20	300	C913203	1.00 - 1.00	148	913206
1	30	300	C913204	1.00 - 1.00	159	913206

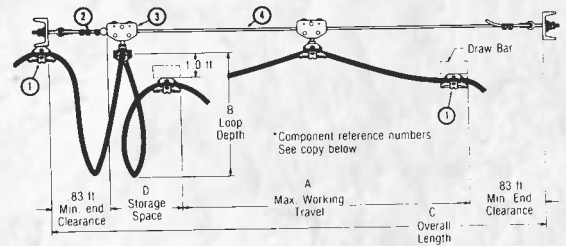
*E = 0.125 Female NPT x 0.375 deep

WIRE ROPE FESTOON SYSTEMS FOR AIR SUPPLY HOSE

Systems include (note numerical key in illustration at right): (1) 2 End Clamp Assemblies; (2) 1 Hardware Kit consisting of 2 eye-bolts, 5 clamps and 1 ball stop; (3) Intermediate Carriers—see specified quantity in last column of chart below; (4) Nylon Covered Wire Rope per required length.

HOSE SYSTEMS (from 0.91" to 1.25" O.D.)							
Model System Number	A Working Travel (feet)	B Loop Depth (feet)	C Overall Length (feet)	D Maximum Combined Cable Wt. (lbs./ft.)	D Storage Space (feet)	Clamp Distance (feet)	No. of Carriers (Item 3)
C901601	16	3	18.5	1.31	0.84	6.87	2
	21	4	23.5	1.01	0.84	8.87	2
C901602	28	3	31.1	1.31	1.40	6.87	4
	37	4	40.1	1.01	1.40	8.87	4
C901603	40	3	43.6	1.31	1.97	6.87	6
	52	4	55.6	1.01	1.97	8.87	6

NOTE: Festooning Hose and Connectors are not included in System.





⚠ WARNING

Overloading and Improper Use Can Result in Injury

To Avoid Injury:

- Do not exceed working load limit, load rating, or capacity.
- Do not use to lift people or loads over people.
- Use only alloy chain and attachments for overhead lifting.
- Read and follow all instructions.

High Performance Lifting

COFFING[®] **HOISTS**

Country Club Road • P.O. Box 779
Wadesboro, NC 28170 USA

Phone: (800) 477-5003 (704) 694-2156

FAX: (800) 374-6853 (704) 694-6829

E-mail: coffing@cmworks.com • www.coffinghoists.com

CAH-2
5M 0103
Printed in USA
©2003 Coffing Hoists