

Cleco[®]



- Flexibility
- Connectivity
- Serviceability

Powerful Tightening Control On A Single Platform

The mPro400GC. Innovation For Safety Critical Applications.

 **COOPER** Tools

The Most Flexible, Cost-Effect

Introducing the Cleco **mPro400GC** Global Controller, the first controller for safety-critical applications that offers unsurpassed levels of flexibility, connectivity, and serviceability while providing superb torque accuracy and process control. This new controller incorporates the advanced technical features of the proven DGD mPro system with the user-friendly software of the trusted Cleco TME controller, resulting in a powerful control solution that offers impressive cost savings through unequalled flexibility.

Corded, Cordless, Or Fixtured ... All From One Controller

The Cleco **mPro400GC** Global Controller is compatible with all Cleco 18-48 Series DC electric corded tools, LiveWire cordless tools, and all DGD and EMT fixtured spindles. That means fewer controllers and cables are needed for your line. And that means savings...up to 50% over traditional systems.

Reduce System Costs Up To 50%

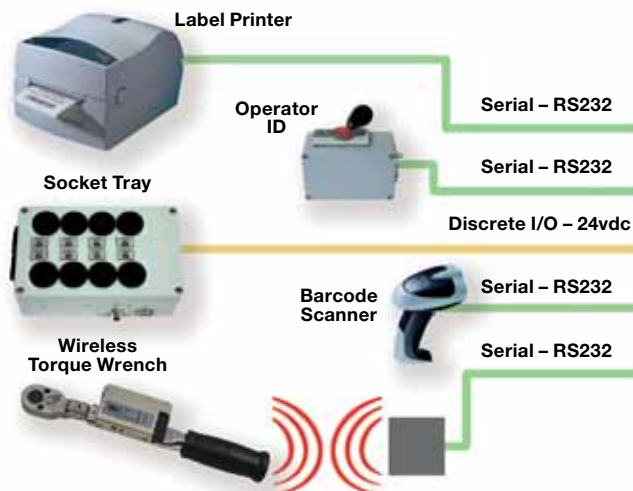
■ Configure up to 16 hand held corded and cordless LiveWire, plus fixtured spindles, from one controller.

■ Acquisition Cost Savings

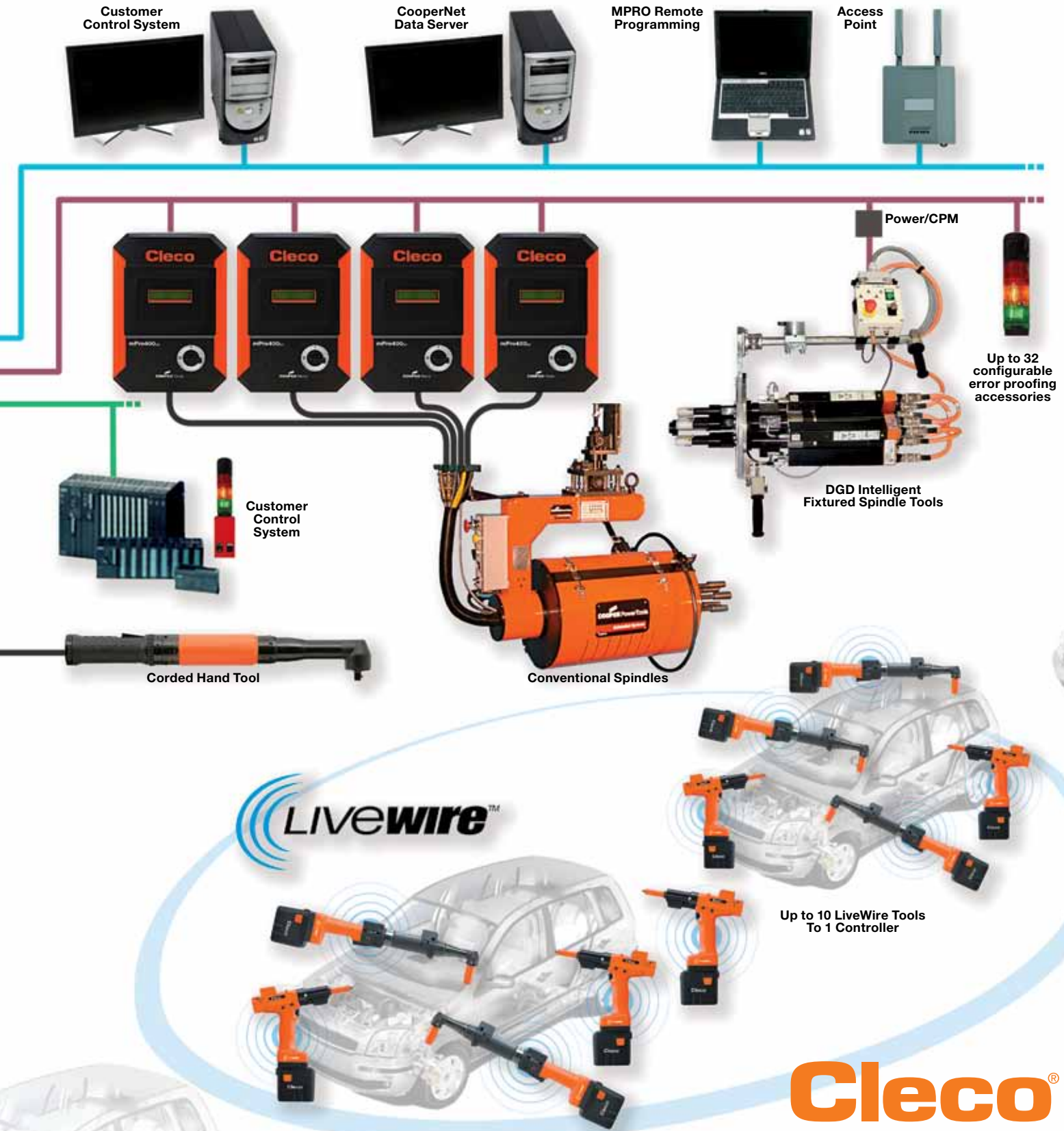
- Example: 10 LiveWire cordless tools, 5 Intelligent Spindles, 1 corded tool from one controller
- Save the expense of 15 controllers and 14 field cables

■ Facility Cost Savings

- Installation Expenses: Save on Ethernet and power drops, controller stands, cable management, labor to install and support
- Production Expenses: One controller means fewer backups, fewer repairs, fewer headaches and one-time training



Intuitive Systems Controller... Ever



Universal Connectivity

Universal connectivity begins with global auto-sensing input voltage, 16 configurable inputs and outputs, plus DeviceNet, Ethernet-IP, and Profibus fieldbus standards. User-friendly software mapping of discrete and fieldbus selections provides ultimate error-proofing control. Dual fieldbus ports allow redundant I/O mapping or expansion. Utilize two different fieldbus standards simultaneously for maximum flexibility.

The Cleco **mPro400GC** Global Controller comes standard with a system bus to manage internal data flow and avoid burdening outside networks. It can be utilized for rapid “grab and go” connectivity to accessories, such as adding error-proofing from socket trays,

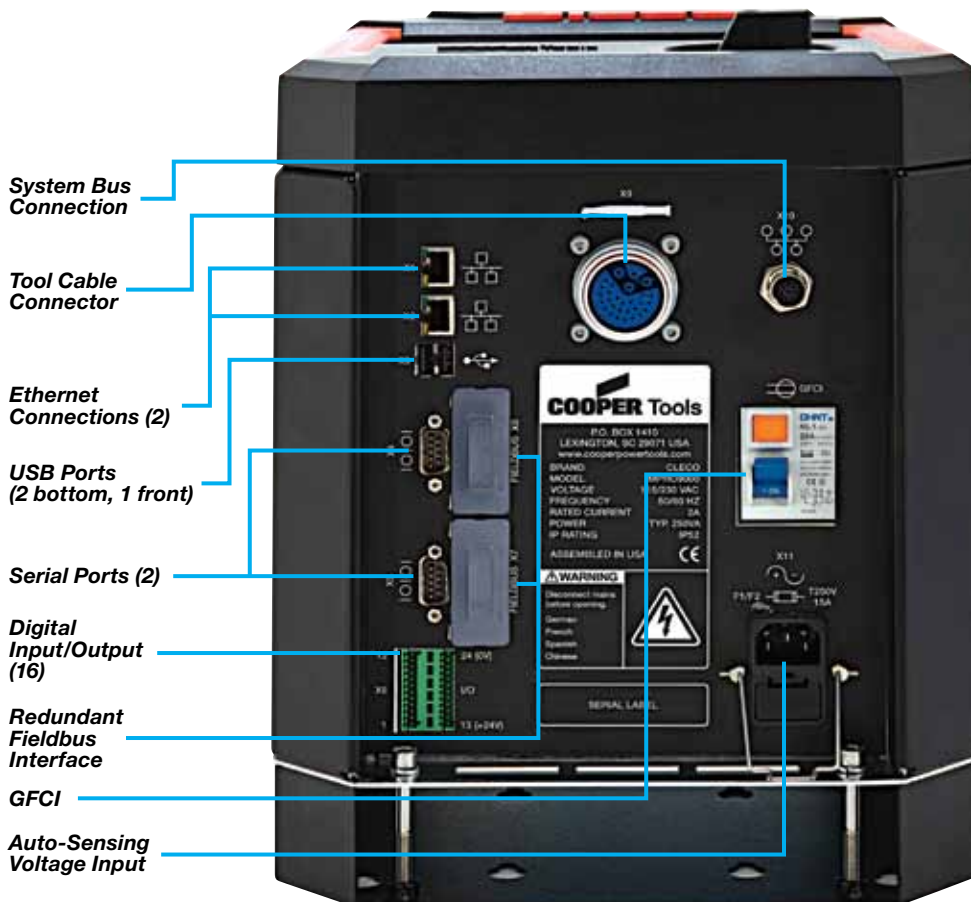
stack lights, or operator boxes. Configurable software menus allow quick integration into any process. With up to 32 configurable nodes on the system bus, endless error-proofing combinations are possible.

The system bus can manage up to 15 secondary controllers in combination with single and multi-spindle stations. Spindle sequencing, data management, and diagnostics are just a few of the many functions performed. In addition, new DGD® Fixtured Intelligent Spindles can utilize

the system bus to drive up to 30% of cost out of a traditional system through cable reduction, maximizing acquisition and facility cost savings.

Universal Connectivity

- Auto-Sensing Voltage
- 16 Configurable I/O's
- Redundant Fieldbus
- Redundant Serial and Ethernet Ports
- Isolated System Bus



For Ultimate Flexibility

Rundown Data Storage

The **mPro400GC** supports CooperNet, our data collection and archiving software, as well as other industry standard software packages. Protocols are available for many of the standard products.

The Cleco **mPro400GC** Global Controller works seamlessly with current protocols and offers significant performance advantages over traditional systems. Features include:

- A single software program that covers both standard and fixtured applications
- Standard spindle sequencing and reject management
- 19 advanced fastening control sequences standard at no additional cost
- Remote programming software with no licensing restrictions
- Touch screen display with integrated alpha-numeric keyboard

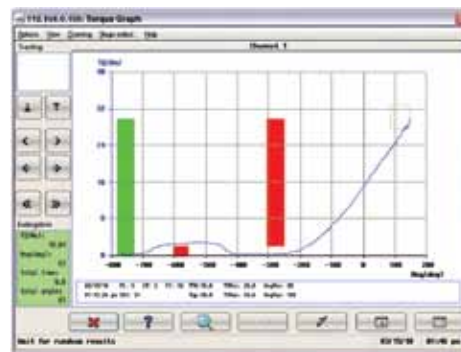
No Software Licensing!



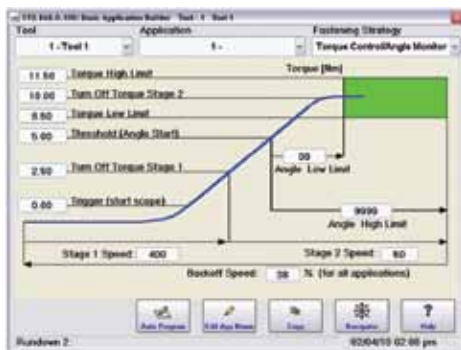
User Friendly GUI



Oscilloscope Process Management



Quick-Start Auto Program Option



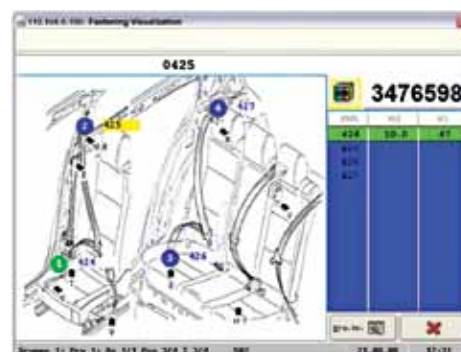
In-Depth Data Management

Sp. No.	Pos. No.	Sp. Label	Angle	Torque	Error	Rate	Time	Workpiece
1	1	1.1	90.00	10.00	0.00	10.00	0.00	1.00
1	2	1.2	90.00	10.00	0.00	10.00	0.00	1.00
1	3	1.3	90.00	10.00	0.00	10.00	0.00	1.00
1	4	1.4	90.00	10.00	0.00	10.00	0.00	1.00
1	5	1.5	90.00	10.00	0.00	10.00	0.00	1.00
1	6	1.6	90.00	10.00	0.00	10.00	0.00	1.00
1	7	1.7	90.00	10.00	0.00	10.00	0.00	1.00
1	8	1.8	90.00	10.00	0.00	10.00	0.00	1.00
1	9	1.9	90.00	10.00	0.00	10.00	0.00	1.00
1	10	1.10	90.00	10.00	0.00	10.00	0.00	1.00
1	11	1.11	90.00	10.00	0.00	10.00	0.00	1.00
1	12	1.12	90.00	10.00	0.00	10.00	0.00	1.00
1	13	1.13	90.00	10.00	0.00	10.00	0.00	1.00
1	14	1.14	90.00	10.00	0.00	10.00	0.00	1.00
1	15	1.15	90.00	10.00	0.00	10.00	0.00	1.00
1	16	1.16	90.00	10.00	0.00	10.00	0.00	1.00
1	17	1.17	90.00	10.00	0.00	10.00	0.00	1.00
1	18	1.18	90.00	10.00	0.00	10.00	0.00	1.00
1	19	1.19	90.00	10.00	0.00	10.00	0.00	1.00
1	20	1.20	90.00	10.00	0.00	10.00	0.00	1.00
1	21	1.21	90.00	10.00	0.00	10.00	0.00	1.00
1	22	1.22	90.00	10.00	0.00	10.00	0.00	1.00
1	23	1.23	90.00	10.00	0.00	10.00	0.00	1.00
1	24	1.24	90.00	10.00	0.00	10.00	0.00	1.00
1	25	1.25	90.00	10.00	0.00	10.00	0.00	1.00
1	26	1.26	90.00	10.00	0.00	10.00	0.00	1.00
1	27	1.27	90.00	10.00	0.00	10.00	0.00	1.00
1	28	1.28	90.00	10.00	0.00	10.00	0.00	1.00
1	29	1.29	90.00	10.00	0.00	10.00	0.00	1.00
1	30	1.30	90.00	10.00	0.00	10.00	0.00	1.00
1	31	1.31	90.00	10.00	0.00	10.00	0.00	1.00
1	32	1.32	90.00	10.00	0.00	10.00	0.00	1.00
1	33	1.33	90.00	10.00	0.00	10.00	0.00	1.00
1	34	1.34	90.00	10.00	0.00	10.00	0.00	1.00
1	35	1.35	90.00	10.00	0.00	10.00	0.00	1.00
1	36	1.36	90.00	10.00	0.00	10.00	0.00	1.00
1	37	1.37	90.00	10.00	0.00	10.00	0.00	1.00
1	38	1.38	90.00	10.00	0.00	10.00	0.00	1.00
1	39	1.39	90.00	10.00	0.00	10.00	0.00	1.00
1	40	1.40	90.00	10.00	0.00	10.00	0.00	1.00
1	41	1.41	90.00	10.00	0.00	10.00	0.00	1.00
1	42	1.42	90.00	10.00	0.00	10.00	0.00	1.00
1	43	1.43	90.00	10.00	0.00	10.00	0.00	1.00
1	44	1.44	90.00	10.00	0.00	10.00	0.00	1.00
1	45	1.45	90.00	10.00	0.00	10.00	0.00	1.00
1	46	1.46	90.00	10.00	0.00	10.00	0.00	1.00
1	47	1.47	90.00	10.00	0.00	10.00	0.00	1.00
1	48	1.48	90.00	10.00	0.00	10.00	0.00	1.00
1	49	1.49	90.00	10.00	0.00	10.00	0.00	1.00
1	50	1.50	90.00	10.00	0.00	10.00	0.00	1.00

Easy-To-Read Run Screen



Digital Image Bolt Sequencing



Superior Serviceability For



Installation Flexibility

At only 10" w X 15" h X 15" d (254mm X 381mm X 381mm) and weighing just 30 lbs. (13.6 kg.), the Cleco **mPro400GC** is substantially smaller and lighter than most traditional controllers. It can be lifted easily by a single person and will mount just about anywhere.



10"x15"x15"
(254mm X 381mm X 381mm)
And Just
30 lbs.
(13.6 kg.)



mPro400GC

COOPER Tools

Master/Primary Unit

Exceptional Ease-Of-Use

Quick Mount Bracket

No more templates and measuring mounting hole patterns...installation of the **mPro400GC** is simple with a separate receiver bracket that makes locating mounting holes easy. The unit then attaches directly to the bracket so the installation is fast and foolproof.



Integrated Cable Management

The **mPro400GC** mounting bracket incorporates an integral cable management channel, so installations stay orderly and easily accessible. Clearly labeled connectors and top-down cable routing means a clean installation with no guesswork. Mounting was designed to be simple and effective to get you up and running fast.

CompactFlash® Memory For Production Uptime

A standard CompactFlash card reliably stores:

- Operating system
- Drivers
- Network settings
- Application parameters
- Torque data

**50
Second
Boot!**



Positioned on the back of the unit for added security and tamper resistance, the card is still easily accessible.

- Rapid controller swap with 50-second boot
- No licensing or proprietary hardware
- Card stores up to 10,000 rundowns per tool

Secondary Controller Functionality

A secondary controller is controlled from a master or primary unit. It has I/O for local error proofing and peripherals, plus a LCD for operator feedback and troubleshooting.



Controllers

Description	Tool Compatibility	Model
Primary	Cleco 18-48 Series, LiveWire, Intelligent Spindle*	MPRO400GC-P
Primary 1-2	LiveWire, Intelligent Spindle*, DGD/EMT Fixtured Spindles - Size 1-2	MPRO400GC-P-12
Secondary	Cleco 18-48 Series	MPRO400GC-S
Secondary 1-2	DGD / EMT Fixtured Spindles - Size 1-2	MPRO400GC-S-12
Master	LiveWire, Intelligent Spindle*	MPRO400GC-M

* Requires quote to accommodate hardware configurations.

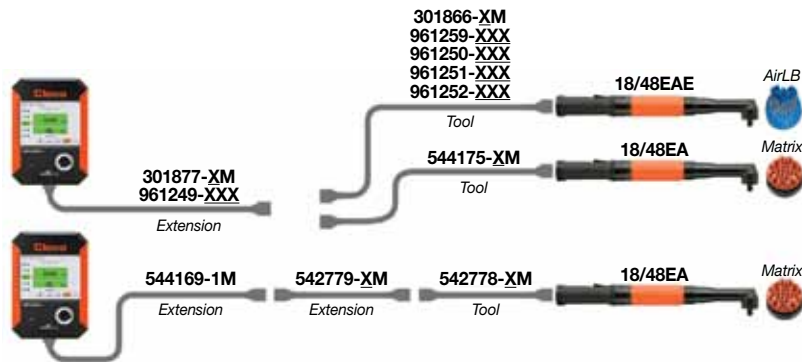


Cables

Tool Model	Extension Model	Description	Connectors
301866- <u>XM</u>	301877- <u>XM</u>	Straight, Std. Durability	AirLB - AirLB
961259- <u>XXX</u>	961249- <u>XXX</u>	Straight, Std. Durability	AirLB - AirLB
961250- <u>XXX</u>		Straight, High Durability	AirLB - AirLB
961251- <u>XXX</u>		Straight Swivel, High Durability	AirLB - AirLB
961252- <u>XXX</u>		Angle Swivel, High Durability	AirLB - AirLB
544175- <u>XM</u>	544169- <u>XM</u>	Straight, Std. Durability	AirLB - Matrix
542778- <u>XM</u>	542779- <u>XM</u>	Straight, Std. Durability	Matrix - Matrix

(X = 1,2,3,6,8,10,15) Meters

(XXX = 010, 020, 030, 040, 050, 060, 080, 100, 120, 130, 140, 150, 180, 220) Decimeters



Accessory Cables

Part No.	Accessory Cable Description
S133412	System Bus Terminator
S133408-005	System Bus Cable - 0.5M Bus
S133408-020	System Bus Cable - 2M Bus
S133408-050	System Bus Cable - 5M Bus
S133408-200	System Bus Cable - 20M Bus
S133408-500	System Bus Cable - 50M Bus
543446-7	Ethernet Cable Crossover - 2M
543445-7	Ethernet Cable Patch - 2M
935170	Serial Cable IrDA - 1M
543490-10	Serial Cable Null Modem - 3M

Accessories

Part No.	Accessory Description
543995	Access Point 2.4GHz WLAN (US)
961323	Access Point 2.4GHz WLAN (EU)
961830	System Bus 16 I/O Expander
960392	System Bus 32 I/O Expander
S133410	System Bus 4-Position Socket Tray
S133411	System Bus 8-Position Socket Tray
S133406	System Bus Control Box with Buzzer
S133405	System Bus Stack Light without Buzzer
S133420	System Bus Stack Light with Buzzer
544171	Fieldbus Devicenet
544172	Fieldbus Ethernet-IP
544173	Fieldbus Profibus
544163PT	CompactFlash Module Programmed
S168620	mPro Remote Programming Software



Cooper Tools
 1000 Luffkin Road
 Apex, NC 27539
www.coopertools.com