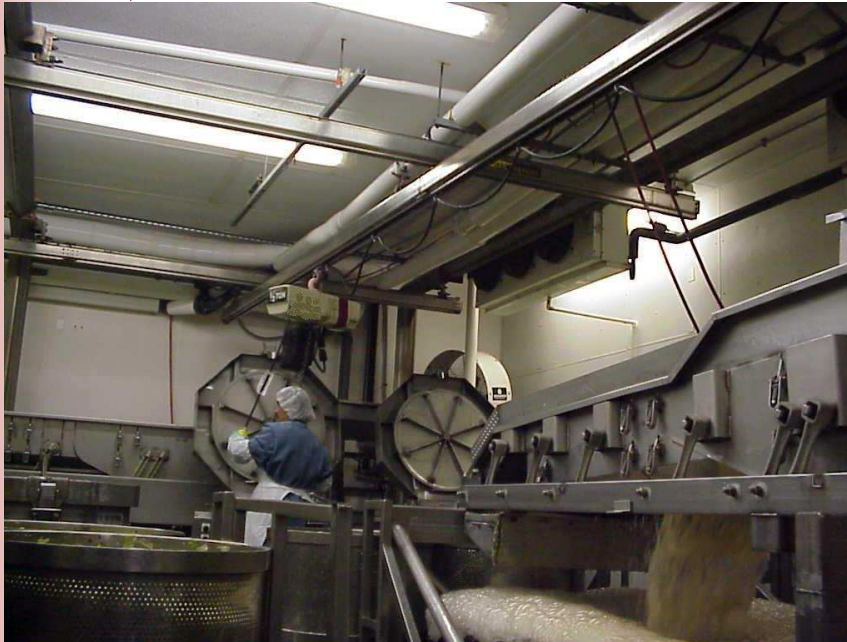


# Stainless Steel Rail in Food Plant



A supplier of pre-mixed salads to a fast food chain restaurant needed to move large mixing bowls within their mixing room from one station to another, and finally move the bowls to a wash down area.

*“Ingersoll Rand’s solution and rapid delivery of the custom components really helped us out when it counted the most”*

Ingersoll Rand provided a three-runway, two-bridge crane system with Stainless Steel enclosed track monorail and Stainless Steel components, the most efficient solution for the long span and capacity required of the two bridge beams. Overall, the bridges are 30’ long and glide on 28’ runways.

The splice of the bridge beams is suspended near the center runway to prevent an overload condition. The system was designed to use existing electric chain hoists, with the round electrical cable suspended with tagline festoon sliders, a very cost effective solution.

Now the food preparers can safely and quickly transfer the salad ingredients into and out of the mixing bowls, and easily deposit the bowls into the washdown area at the end of the assembly line. The electric hoists are then removed from the area prior to wash down.

Because of the acidity present in the environment, special heavy-duty trolleys were fabricated to replace the standard stamped trolleys.



Ingersoll Rand Company  
1872 Enterprise Drive  
Rochester Hills, MI 48309  
Phone: 800-998-0872

Website: [www.irco.com/lifting](http://www.irco.com/lifting)

Proud Member of the  
Monorail Manufacturers  
Association

