

## Aero-Motive Company

**W** A Woodhead Industries, Inc. Subsidiary

### IMPORTANT SAFETY INSTRUCTIONS

Please read this manual carefully and follow its instructions. Improper use or failure to follow these instructions could result in serious injury, death or property damage. Operators should be instructed in the safe and proper use and maintenance of this product. Keep this manual for future reference.

The following safety precautions call attention to potentially dangerous conditions.



**DANGER:** Immediate hazards which **WILL** result in severe personal injury or death.



**WARNING:** Hazards or unsafe practices which **COULD** result in severe personal injury or death.



**CAUTION:** Hazards or unsafe practices which **MAY** result in *minor* personal injury or product or property damage.

### INSTALLATION

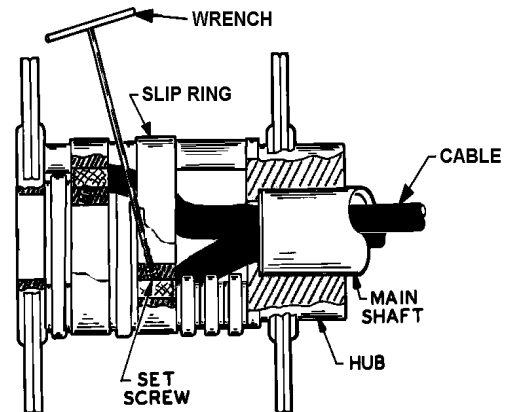


**WARNING:** Lock out all electrical power before opening any enclosures. Fuse protection should be provided. Hazards or unsafe practices **COULD** result in severe personal injury or death.

Mount the slip ring by sliding the mounting hub over the mounting shaft, snug against the drum plate of the reel, and securing it tightly with two set screws. The mounting hub on model SR62X has a 2" diameter bore and 2.628" depth. The models SR63X & SR100 have a 3" diameter bore and 2.562" depth. The drive stud (customer supplied or mounted on the reel), must protrude through the hole on the drive plate allowing a 5/8" minimum clearance to the first brush-holder in line, in order to avoid electrical contact. Drive stud should not exceed 1/2" diameter.

### **WIRING**

The wires coming through the main-shaft are connected to the slip ring. To connect ring closest to the hub, pull wire from shaft completely through slip ring assembly, and slide wire back inside the ring assembly. Then slide wire into terminal of the slip ring, and  
and  
tighten screw by reaching between rings with hex key. Connect remaining wires directly to terminal of the slip ring, and tighten set screw. Out going wires are connected to terminals on the brush-holder assembly.



**CAUTION:** Always check continuity before connecting power. Always provide slip ring with fuse protection. Hazards or unsafe practices **MAY** result in *minor* personal injury or product or property damage.

## SERVICE

**CAUTION:** During disassembly and assembly of slip ring always be careful to install parts in their proper places as illustrated below. Hazards or unsafe practices **MAY** result in *minor* personal injury or product or property damage.

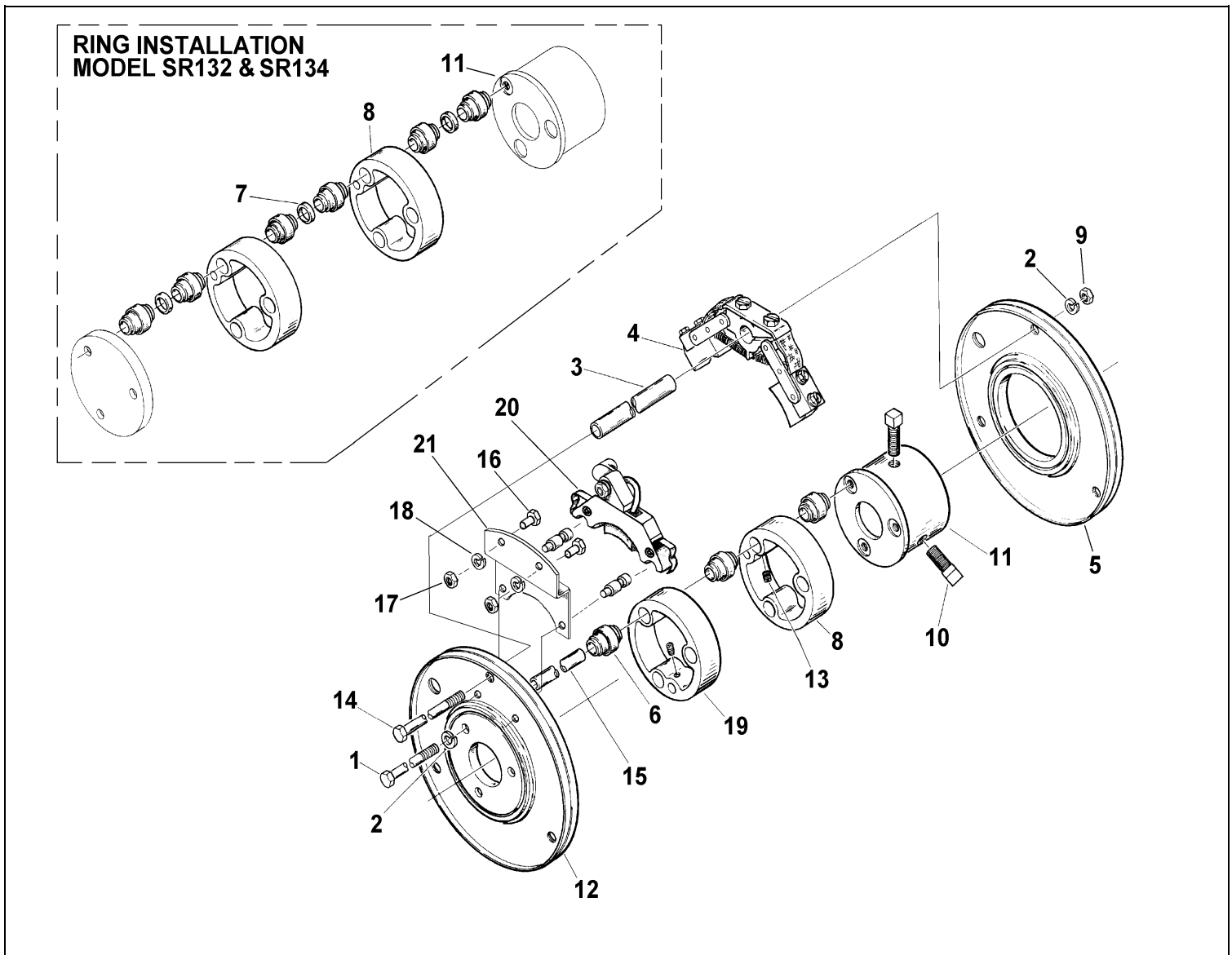
All parts illustrated below are available as repair parts should they require replacement. The brush-holder assembly should always be centered on the rings. Be sure that the brush surface makes complete contact with ring. Tighten screw on brush-holder assembly to lock brush-holder securely in place.

## MAINTENANCE

The air gap slip ring requires no lubrication, or maintenance other than periodic inspection.

**NOTE:** Never treat ring surface with any type of lubricant or cleaner.

## REPLACEMENT PARTS



Number	Number	Qty.	Description
1	00032P0119	3	BOLT (SR622,SR632)
	00032P0138	3	BOLT (SR623,SR633)
	00032P0139	3	BOLT (SR624,SR634)
	6174800003	3	BOLT (SR626,SR636)
	6174800004	3	BOLT (SR134)
	6174800005	3	BOLT (SR134GC)
	6174800007	3	BOLT (SR634GC)
	6174800008	3	BOLT (SR132)
	6174800009	3	BOLT (SR133)
2	00101P0021	11	WASHER; 3/8" LOCK
3	M83200300	2	INSULATOR; TUBE (SR622,SR632)
	M83200301	2	INSULATOR; TUBE (SR623,SR633)
	M83200302	2	INSULATOR; TUBE (SR624,SR634)
	M83200303	2	INSULATOR; TUBE (SR626,SR636)
	M83200299	2	INSULATOR; TUBE (SR634GC)
	M83200295	2	INSULATOR; TUBE (SR132)
	M83200296	2	INSULATOR; TUBE (SR133)
	M83200297	2	INSULATOR; TUBE (SR134)
4	5860500000	6	ASSEMBLY; BRUSH-HOLDER (Required Per Conductor) (SR626,SR636)
		2	ASSEMBLY; BRUSH-HOLDER (Required Per Conductor) (SR622,SR632,SR132)
		3	ASSEMBLY; BRUSH-HOLDER (Required Per Conductor) (SR623,SR633,SR133)
		4	ASSEMBLY; BRUSH-HOLDER (Required Per Conductor) (SR624,SR634,SR634GC,SR134,SR134GC)
5	6195700000	1	ASSEMBLY; PLATE BEARING
6	5852300000	9	INSULATOR (SR622,SR632)
		12	INSULATOR (SR623,SR633)
		15	INSULATOR (SR624,SR634)
		21	INSULATOR (SR626)
		18	INSULATOR (SR634GC)
7	M83430002	15	INSULATOR; SLEEVE (SR134)
	4 M83430002 4	9	INSULATOR; SLEEVE (SR132)
8	5852600000	6	COLLECTOR RING (Required Per Conductor) (SR636,SR626)
		2	COLLECTOR RING (Required Per Conductor) (SR622,SR632,SR132)
		3	COLLECTOR RING (Required Per Conductor) (SR623,SR633,SR133)
		4	COLLECTOR RING (Required Per Conductor) (SR624,SR634GC,SR634,SR134,SR134GC)
9	C22020312	8	NUT; 3/8-16 HEX HD.
10	00051P0022	2	SCREW; SET (SR622, SR623,SR624,SR626)
	00051P0024	2	SCREW; SET (SR632,SR633,SR634,SR634GC,SR636,SR132,SR133) (SR134,SR134GC)
11	6183500000	1	HUB; SLIP RING (SR622,SR623,SR624,SR626)
	6183400000	1	HUB; SLIP RING (SR632,SR633,SR634,SR634GC,SR636, SR134, SR134GC)
12	6195600000	1	ASSEMBLY; END PLATE BEARING
	6195600001	1	ASSEMBLY; END PLATE BEARING
13	00053P0703	AR	SCREW; 1/2-20X1/2 SET (Required Per Conductor)
14	M25460030	3	STUD; BRUSH (SR634GC)
	4	3	STUD; BRUSH (SR622,SR632)
	M25460030	3	STUD; BRUSH (SR623,SR633)
	5	3	STUD; BRUSH (SR624,SR634)
	M25460030	3	STUD; BRUSH (SR626,SR636)
	6	3	STUD; BRUSH (SR132)
	M25460030	3	STUD; BRUSH (SR133)
	7	3	STUD; BRUSH (SR134)

	M25460030 8 M25460030 0 M25460030 1 M25460030 2 M25460030 3	3	STUD; BRUSH (SR134GC)
15	6174100006 6174100007 6174100008 6174100010 6174100009 6174100011 6174100013 6174100018	3 3 3 3 3 3 3 3	INSULATOR; TUBE (SR622,SR632) INSULATOR; TUBE (SR623,SR633) INSULATOR; TUBE (SR624,SR634) INSULATOR; TUBE (SR626,SR636,SR634GC) INSULATOR; TUBE (SR134) INSULATOR; TUBE (SR132) INSULATOR; TUBE (SR134GC) INSULATOR; TUBE (SR133)
16	00030P0111	2	SCREW; HEX HD CAP (SR134GC, SR634GC)
17	00160P0025	2	NUT; HEX (SR134GC, SR634GC)
18	00101P0030	2	WASHER; LOCK (SR134GC, SR634GC)
19	H96210002	1	RING; GROUND CHECK (SR134GC, SR634GC)
20	H97620002	1	ASSEMBLY; BRUSH HOLDER (SR134GC, SR634GC)
21	H98110001	1	BRUSH MOUNTING (SR134GC, SR634GC)

**Aero-Motive Company**

**W** A Woodhead Industries Inc. Subsidiary  
PO Box 2678  
Kalamazoo, MI 49003-2678  
(616) 337-7700  
(800)-999-8559  
FAX: (800) 333-6119

**AKAPP Electro Industrie**

**W** A Woodhead Industries Inc. Subsidiary  
Nijverheidsweg 14 Box 54  
NL-3771 ME Barneveld  
NL-3771 AB Barneveld  
Holland  
011-31-3420-14022  
FAX: 011-31-3420-92384

**Aero-Motive (UK)  
Limited**

**W** A Woodhead Industries Inc. Subsidiary  
Rassau Industrial Estate  
Ebbw Vale Gwent NP3 5SD  
United Kingdom  
(0495) 350436  
FAX: (0495) 350877

**Woodhead Asia PTE LTD**

**W** A Woodhead Industries Inc. Subsidiary  
401 Commonwealth Drive #04-04  
Haw Par Technocentre  
Singapore 0314  
(65) 479 6533  
FAX: (65) 479 3588

**Woodhead Canada LTD.**

**W** A Woodhead Industries Inc. Subsidiary  
1090 Brevik Place  
Mississauga Ontario  
L4W 3Y5 Canada  
(905) 624-6518  
FAX: (905) 624-9151