

## Aero-Motive Company

**W** A Woodhead Industries, Inc. Subsidiary

### Important Safety Instructions

Please read this manual carefully and follow its instructions. Improper use or failure to follow these instructions could result in serious injury, death or property damage. Operators should be instructed in the safe and proper use and maintenance of this product. Keep this manual for future reference.

The following safety precautions call attention to potentially dangerous conditions.



**DANGER:** Immediate hazards which **WILL** result in severe personal injury or death.



**WARNING:** Hazards or unsafe practices which **COULD** result in severe personal injury or death.



**CAUTION:** Hazards or unsafe practices, which **MAY** result in, *minor* personal injury or product or property damage.

### INSTALLATION



**WARNING:** Failure to read, understand, and follow these instructions creates hazards that **COULD** result in personal injury or death.



**CAUTION:** Instruct operators in the safe, proper use, and maintenance of system. Keep this manual for future reference. Hazards or unsafe practices **MAY** result in *minor* personal injury or product or property damage.



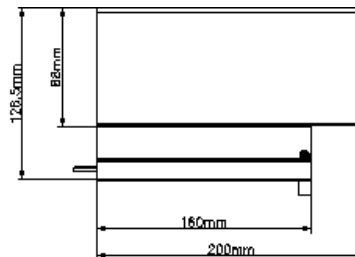
**WARNING:** Installation should be performed by qualified electricians in accordance with the Canadian Electric Code or National Electric Code, any applicable state or local codes and any supplementary component labeling or instructions.



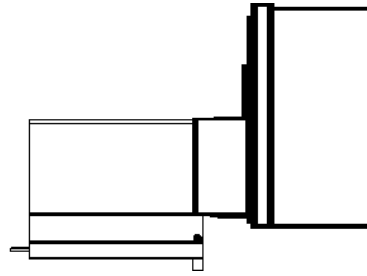
**WARNING:** Ensure power is disconnected prior to beginning any work on the system.

The adapter is required to install a standard end feed box on the end of hand-safe housing.

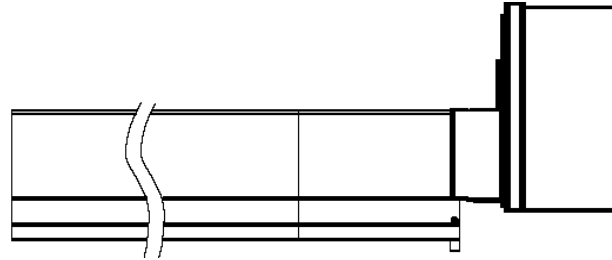
Adapter is 200mm long and comes with AVN7L joint clamp to attach it to system housing and a coupling kit with two plastic pins that are installed in bottom slots to align bottom safety extension.



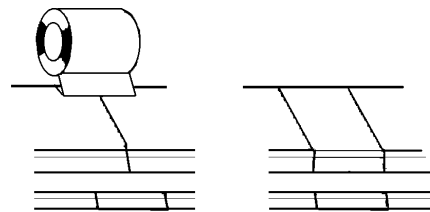
Housing is notched back so any end feed box can be easily installed



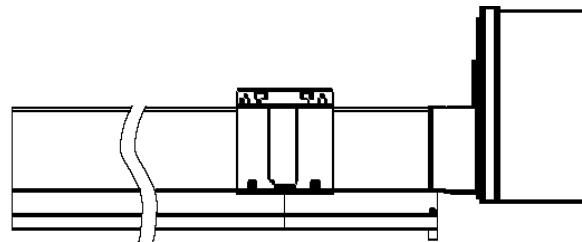
Adapter housing is then joined to system housing.



AT50 electrical tape is taped around joint.



Joint clamp is installed.



**Aero-Motive Company**

**W** A Woodhead Industries Inc. Subsidiary  
PO Box 2678  
Kalamazoo, MI 49003-2678  
(616) 337 7700  
(800) 999 8559  
FAX: (800) 333 6119  
www.aeromotive.com

**AKAPP Electro Industrie**

**W** A Woodhead Industries Inc. Subsidiary  
Nijverheidsweg 14 Box 54  
NL-3771 ME Barneveld  
NL-3771 AB Barneveld  
Holland  
(31) 34 241 4022  
FAX: (31) 34 249 2384  
www.akapp.com

**Woodhead Connectivity LTD.**

**W** A Woodhead Industries Inc. Subsidiary  
Factory No. 9  
Rassau Industrial Estate  
Ebbw Vale Gwent NP3 5SD  
United Kingdom  
(0495) 35 0436  
FAX: (0495) 35 0877  
sales@wdhd.co.uk

**Woodhead Asia PTE LTD.**

**W** A Woodhead Industries Inc. Subsidiary  
401 Commonwealth Drive #04-04  
Haw Par Technocentre  
Singapore 0314  
(65) 261 6533  
FAX: (65) 479 3588  
sales@wasia.com.sg

**Woodhead Canada LTD.**

**W** A Woodhead Industries Inc. Subsidiary  
1090 Brevik Place  
Mississauga Ontario  
L4W 3Y5 Canada  
(905) 624-6518  
FAX: (905) 624-9151  
www.woodhead.ca