

**AERO-MOTIVE COMPANY**

A Woodhead Industries, Inc. Subsidiary



## **IMPORTANT SAFETY INSTRUCTIONS**

Please read this manual carefully and follow its instructions. Improper use or failure to follow these instructions could result in serious injury, death or property damage. Operators should be instructed in the safe and proper use and maintenance of this product. Keep this manual for future reference.

The following safety precautions call attention to potentially dangerous conditions.



**DANGER:** Immediate hazards which **WILL** result in severe personal injury or death.



**WARNING:** Hazards or unsafe practices which **COULD** result in severe personal injury or death.



**CAUTION:** Hazards or unsafe practices which **MAY** result in *minor* personal injury or product or property damage.

**NOTE:** Instruct operators in the safe, proper use and maintenance. Keep this manual for future reference.

## **INSTALLATION**



**WARNING:** Failure to read, understand, and follow these instructions may result in hazards or unsafe practices **COULD** result in severe personal injury or death.

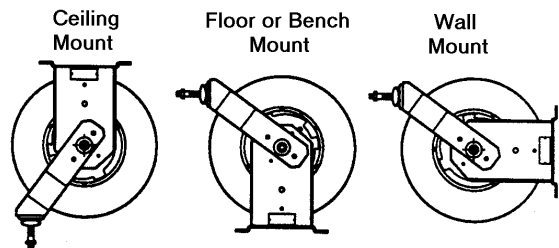


**CAUTION:** Operators need to be instructed on the safe, proper use and maintenance of this product. Keep this manual for future references. Hazards or unsafe practices **MAY** result in *minor* personal injury or product or property damage.

## **MOUNTING**

Some reels come complete with hose, and are set at the proper tension to install. Reels without hose need to have pretension set. Reels can be mounted in any position either base up, base down, wall mounted, or any position which allows the mainshaft to be horizontal. Reels should be mounted with centerline of drum, in-line with hose run.

Guide Mounting Positions



## **PIVOT BASE**

If optional pivot base is used, reel will be self-aligning to direction of cable run. The four roller cable guide must be used with pivot or swivel mounts.

## **SUPPLY HOSE**

Assemble supply hose to main shaft. **Do not** use rigid pipe at input connection.

## **SECONDARY SUPPORT CHAIN**



**DANGER:** A secondary safety cable or chain must be attached to all reels overhead to prevent reel from falling. Immediate hazards **WILL** result in severe personal injury or death.

All reels mounted over head should have a secondary support chain to protect personnel in case of structure or mounting component failure. Attach one end of secondary support chain or cable to secondary support point on reel. Attach other end of secondary support chain or cable to a support component other than that which supports the reel. The chain or cable should be as short as possible allowing reel to drop no more than 6 to 12 inches if the primary connection is released.

## **OPERATION**

### **RATCHET LOCK**

Ratchet lock works in two positions and needs no adjustment. When engaged, spring tension is locked at desired hose length, preventing hose from retracting. To disengage ratchet lock, pull out a short distance and allow hose to retract. If constant tension is desired, remove ratchet spring.

### **SPRING TENSION**

**NOTE: Do not connect working end of hose until the reel is properly pretensioned.**

Before making final connection at loose end of hose, pre-tension reel by pulling hose out far enough to allow one full wrap of hose to be looped back over drum. Hold drum from turning and loop hose back onto drum of reel. (This applies one wind of tension to spring.) Repeat until desired tension is reached. After tension is set, pull hose out completely to assure enough spring travel remains for operating. **A minimum number of tensioning turns should be applied (usually 2-4 is sufficient)**. Complete connections at loose end of hose. Reels, which are shipped complete with hose, have been pre-tensioned at the factory and further tensioning usually is not required.



**CAUTION:** Failure to test for enough spring travel, after retensioning reel, can cause spring damage.

### **HOSE GUIDE**

Proper guide adjustment (to allow hose to be pulled from reel in a straight line) provides maximum hose life. To adjust guide arm, remove screws and rotate guide arm assembly. (See diagrams page 1.)

## **SERVICE**

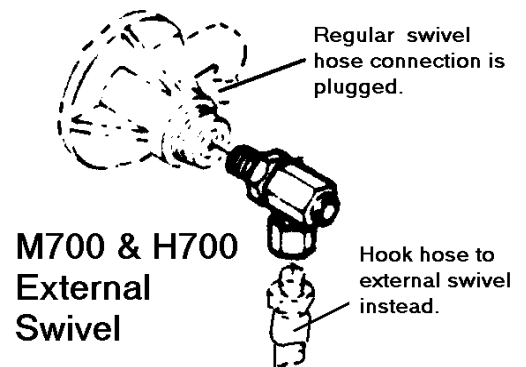


**CAUTION:** Before attempting service, always cut off all supply input and remove all tension from mainspring.

### **HOSE REPLACEMENT**

**NOTE: For M700 and H700, hose connects to external swivel, not the internal connection that is plugged. When replacing hose be sure all hose fittings and clamps are secure.**

To replace hose, pull hose out far enough to engage ratchet lock and engage lock. Remove hose stop and clamp. Hose can easily be removed from swivel assembly. When replacing hose, be sure all fittings are tight and hose clamp is firmly in place. Place hose through roller guide, wind new hose on drum of reel in the same manner as the old hose was before removing.



### **O-RING REPLACEMENT**

**NOTE: For M600 and H600, replace entire swivel. O-rings are not repairable buy new external swivel.**

Repeat steps above to remove spool. Remove retaining ring, washer, and mainshaft. o-rings may now be replaced. When replacing o-rings, remove old rings very carefully, to avoid damage or scratching of shaft. Remove all contamination from shaft and swivel. Install new o-rings and apply a light coat of good commercial grease to shaft and swivel for lubrication (remove all excess grease). Reassemble by reversing above procedure.



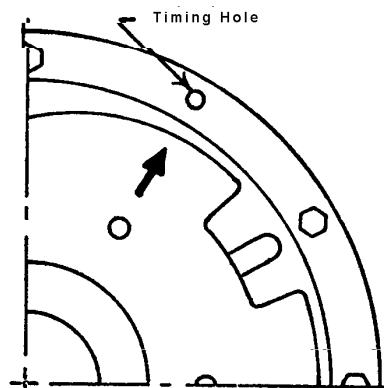
**CAUTION:** Oxygen requires a special lubricant consult factory.

### MAINSRING REPLACEMENT

Remove set-screw, and remove spool assembly complete with Mainshaft and hose form stand.

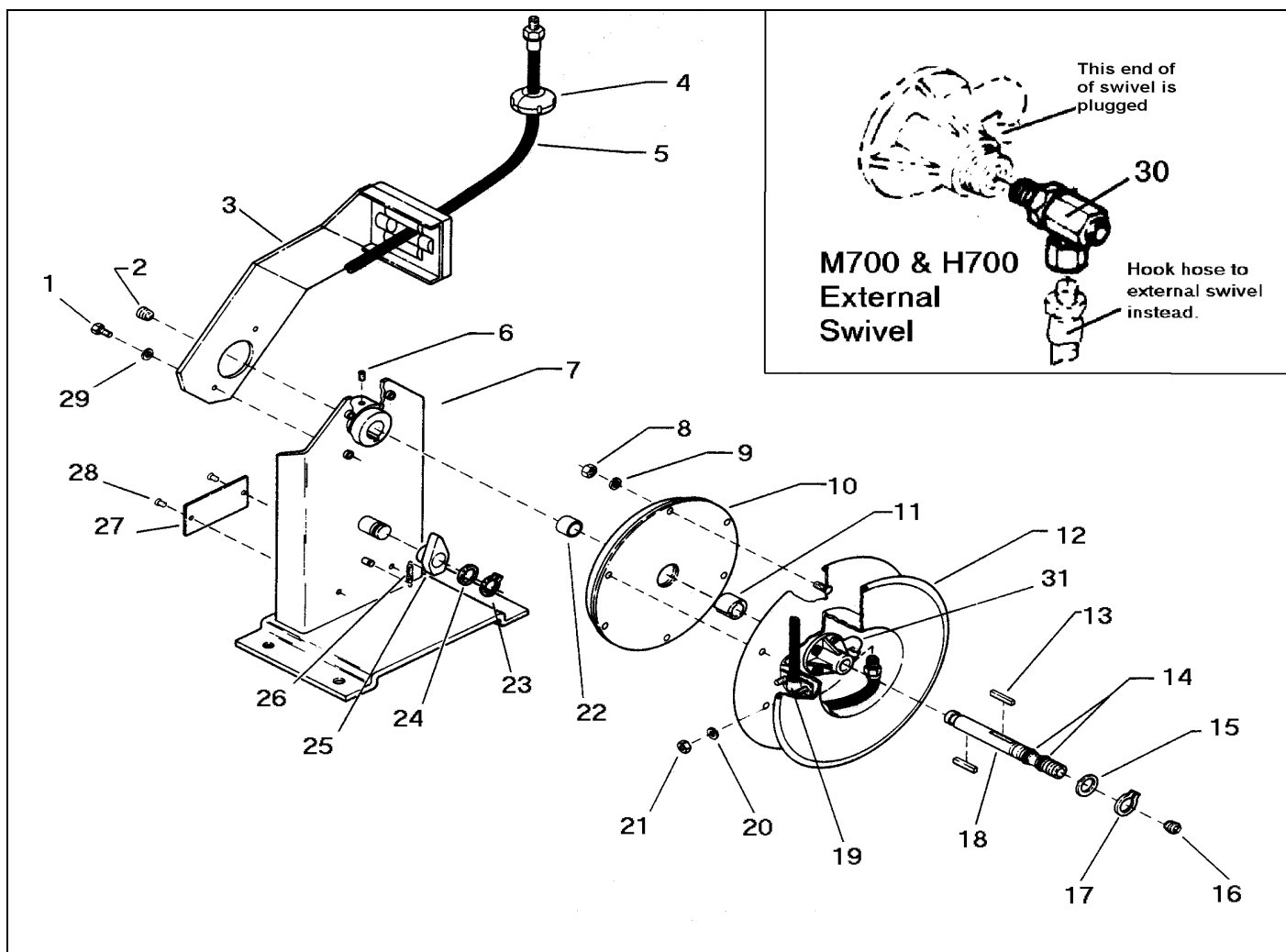
**Note:** Timing holes mark location of spring housing to drum. Align new spring and housing in exact same manner as the previous.

Remove nuts, and mainspring and cup assembly from drum and replace. Reverse above to reassemble. Mainspring is completely containerized and safe to handle



**WARNING:** Never under any circumstances remove the spring from its spring pocket assembly. Replacement springs are assembled in a sealed assembly for safety and there is no need to remove them. Serious injury of death could result from removal of spring from its cartridge.

### REPLACEMENT PARTS



Reference Number	Part Number	Qty.	Description
1	00030P0110	2	SCREW (1/4-20 X 3/4" HEX.)
2	00669P0060	2	REDUCER (D735 AND D735-0)
	M36660005	1	REDUCER (D720)
3	5954800000	1	GUIDE ARM ASSEMBLY
4	ST-1	1	HOSE STOP (3/8" I.D. )
	ST-2	1	HOSE STOP (1/2" I.D. )
5	H71180035	1	HOSE ASSEMBLY (D745, 50' X 1/2")
	H71180037	1	HOSE ASSEMBLY (D743, 25' X 1/2")
	H71180036	1	HOSE ASSEMBLY (D742, 25' X 1/2")
	H71180046	1	HOSE ASSEMBLY (D735, 50' X 3/8")
6	00053P0407	1	SET SCREW (5/16-24 X 1/2")
	00053P0411	1	SET SCREW (M730, M740, & H720)
7	5954700000	1	STAND ASSEMBLY (D700)
8	00151P0025	6	NUT (10-24)
9	00101P0015	6	WASHER (#10)
10	5955700000	1	MAINSRING & CUP ASSEMBLY
11	5370600001	1	HUB, MAINSPRING
12	6161500000	1	DRUM ASSEMBLY
13	4077300005	2	KEY
14	C47060119	2	O-RING (D700) (NOT REQ'D. ON M730,M740 & H720)
15	5373000000	1	SPACER
16	00826P0304	1	PIPE PLUG
17	00576P0043	1	RETAINING RING
18	5375000000	1	MAINSHAFT (D700)
	M35660027	1	MAINSHAFT (H720)
	M35660031	1	MAINSHAFT (M730)
	6288600000	1	MAINSHAFT (M740)
19	5381700000	1	CLAMP (3/8" I.D. HOSE)
	5376400000	1	CLAMP (1/2" I.D. HOSE)
20	00101P0015	2	WASHER (#10)
21	00151P0025	2	NUT (#10-24)
22	5955400000	1	SPACER
23	00580P0065	1	RETAINING RING
24	5945300000	1	WASHER
25	5942400000	1	RATCHET LEVER
26	5385600000	1	SPRING, RATCHET
27	5383100000	1	NAME PLATE
28	00076P0030	1	DRIVE SCREW
29	00101P0030	2	WASHER (1/4")
30	00666P0032	1	SWIVEL (M740)
	00666P0048	1	SWIVEL (M730)
	B33130003	1	SWIVEL (H720)
31	6118200000	1	SWIVEL (D700)

**Aero-Motive Company**

**W** A Woodhead Industries Inc. Subsidiary  
 PO Box 2678  
 Kalamazoo, MI 49003-2678  
 (616) 337 7700  
 (800) 999 8559  
 FAX: (800) 333 6119  
 www.aeromotive.com

**AKAPP Electro Industrie**

**W** A Woodhead Industries Inc. Subsidiary  
 Nijverheidsweg 14 Box 54  
 NL-3771 ME Barneveld  
 NL-3771 AB Barneveld  
 Holland  
 (31) 34 241 4022  
 FAX: (31) 34 249 2384  
 www.akapp.com

**Woodhead Connectivity LTD.**

**W** A Woodhead Industries Inc. Subsidiary  
 Factory No. 9  
 Rassau Industrial Estate  
 Ebbw Vale Gwent NP3 5SD  
 United Kingdom  
 (0495) 35 0436  
 FAX: (0495) 35 0877  
 sales@wdhd.co.uk

**Woodhead Asia PTE LTD.**

**W** A Woodhead Industries Inc. Subsidiary  
 401 Commonwealth Drive #04-04  
 Haw Par Technocentre  
 Singapore 0314  
 (65) 261 6533  
 FAX: (65) 479 3588  
 sales@wasia.com.sg

**Woodhead Canada LTD.**

**W** A Woodhead Industries Inc. Subsidiary  
 1090 Brevik Place  
 Mississauga Ontario  
 L4W 3Y5 Canada  
 (905) 624-6518  
 FAX: (905) 624-9151  
 www.woodhead.ca