

AERO-MOTIVE COMPANY



A Woodhead Industries, Inc. Subsidiary

IMPORTANT SAFETY INSTRUCTIONS

Please read this manual carefully and follow its instructions. Improper use or failure to follow these instructions could result in serious injury, death or property damage. Operators should be instructed in the safe and proper use and maintenance of this product. Keep this manual for future reference.

The following safety precautions call attention to potentially dangerous conditions.



DANGER: Immediate hazards which **WILL** result in severe personal injury or death.



WARNING: Hazards or unsafe practices which **COULD** result in severe personal injury or death.



CAUTION: Hazards or unsafe practices which **MAY** result in *minor* personal injury or product or property damage.

NOTE: Instruct operators in the safe, proper use and maintenance. Keep this manual for future reference.

INSTALLATION



WARNING: Failure to read, understand, and follow these instructions may result in hazards or unsafe practices **COULD** result in severe personal injury or death.



CAUTION: Operators need to be instructed on the safe, proper use and maintenance of this product. Keep this manual for future references. Hazards or unsafe practices **MAY** result in *minor* personal injury or product or property damage.

MOUNTING

Reels with hose and are set at proper tension, ready to install. The fixed base of the reel allows mounting in several different positions including base up, base down, or wall mounted. Here are general mounting requirements:

- Main-shaft must be horizontal.
- Centerline of the spool assembly must be in line with the hose pull out.
- When mounted overhead in base up position, add a secondary chain, bracket or other safety device to prevent reel from falling in case the mounting bolts are removed or become loosened from vibration.

SECONDARY SUPPORT CHAIN



DANGER: A secondary safety cable or chain is to be attached to all reels mounted overhead to prevent reel from falling. Immediate hazards **WILL** result in severe personal injury or death.

A hole on the side of the housing is for the secondary support chain connection. All reels mounted overhead should have a secondary support chain to protect personnel in case of structure or mounting component failure. Attach one end of secondary support chain or cable to secondary support point on reel. Attach other end of secondary support chain or cable to a support component other than that which supports the reel. The chain or cable should be as short as possible allowing reel to drop no more than 6 to 12 inches if the primary connection is released. A secondary support is offered as an accessory item.

SUPPLY HOSE / INPUT CONNECTIONS

Lead-in hoses are available from the factory as an optional item when not supplied with the reel. Connect the supply-input hose on the fittings on both ends of the shaft. Rigid pipe should not be used on input connections.

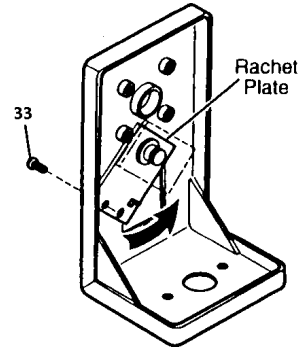
ADJUSTMENT

RATCHET LOCK

The Ratchet Lock works with reel mounted in any position and needs no adjustment. To disable ratchet, remove screw and slide ratchet plate

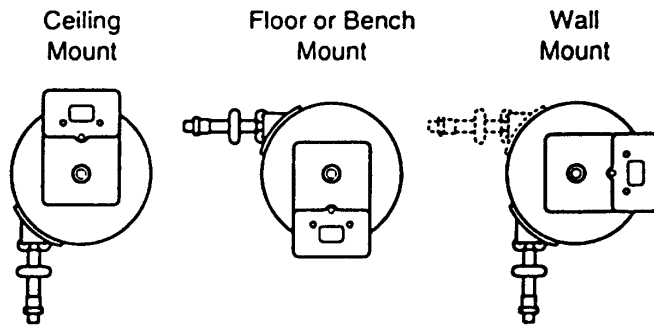
in

pivoting motion to opposite side. Re-install screw in new position



HOSE GUIDE ADJUSTMENT

For maximum hose life, adjust guide so that the hose payout is in line with guide assembly. (See illustration below). For maximum hose life, adjust cover and guide assembly so that the hose payout is in line with the guide rollers. To adjust the cover and guide assembly, remove four screws and lock washers. Rotate cover and guide assembly 90 degree to next group of mounting holes in stand cover assembly.



Guide and Mounting Positions

TENSION ADJUSTMENT




CAUTION: Failure to test for adequate spring revolutions can cause damage. Hazards or unsafe practices MAY result in *minor* personal injury or product or property damage.

NOTE: Pull hose out completely to insure enough spring revolution remain for operating. Leave at least 1-2 turns between full extension and when spring is wound tight (bottomed out). If entire hose assembly cannot be pulled out, decrease tension until full extension is possible.

Reels shipped with hose installed are pre-tensioned at the factory. Reels shipped without hose require pre-tensioning after hose is installed and *before* making final hose connections. . To pre-tension hose reel, pull hose out far enough to engage ratchet lock and engage lock. Remove cover and guide assembly by removing the four screws and lock washers. Pull hose out far enough to allow one full wrap of hose to be looped back over drum assembly. Prevent drum from turning and loop hose back on drum. Repeat this process until desired starting tension is achieved. After tension is set, pull hose out completely to check spring travel. Also, always leave at least 1 to 2 turns between full extension and when spring is wound tight (bottomed out). If full hose extension is not possible, remove pretension turns until full hose tension is possible. Replace by reversing above procedures and completing all hose connections.

SERVICE

 **WARNING:** Before performing any service, always disconnect and lock out compressed air or fluid, & Remove all spring tension before attempting any service. Hazards or unsafe practices **COULD** result in severe personal injury or death.

HOSE INSTALLATION AND REPLACEMENT

NOTE: When replacing hose make sure all hose fittings and clamps are secure.

Remove all tension from reel(see Tension Adjustment). Remove ball stop and hose clamp from hose connection to swivel. Pull hose from barb fitting and from reel. Place new hose through roller guide, connect to swivel, wind on drum assembly, and re-tension reel.

MAINSRING, CUP & RATCHET ASSEMBLY REPLACEMENT

 **WARNING:** Never, under any circumstances, remove spring from its spring pocket assembly. Replacement springs are assembled in a sealed assembly for safety and there is no need to remove them. Serious injury or death could result from removal of spring from its cartridge.

 **CAUTION:** When reassembling mainspring and cup, be sure arrow ratchet assembly aligns and timing mark on assembly. Hazards or unsafe practices **MAY** result in *minor* personal injury or product or property damage.

NOTE: Mainspring is completely self-contained and **safe** to handle.

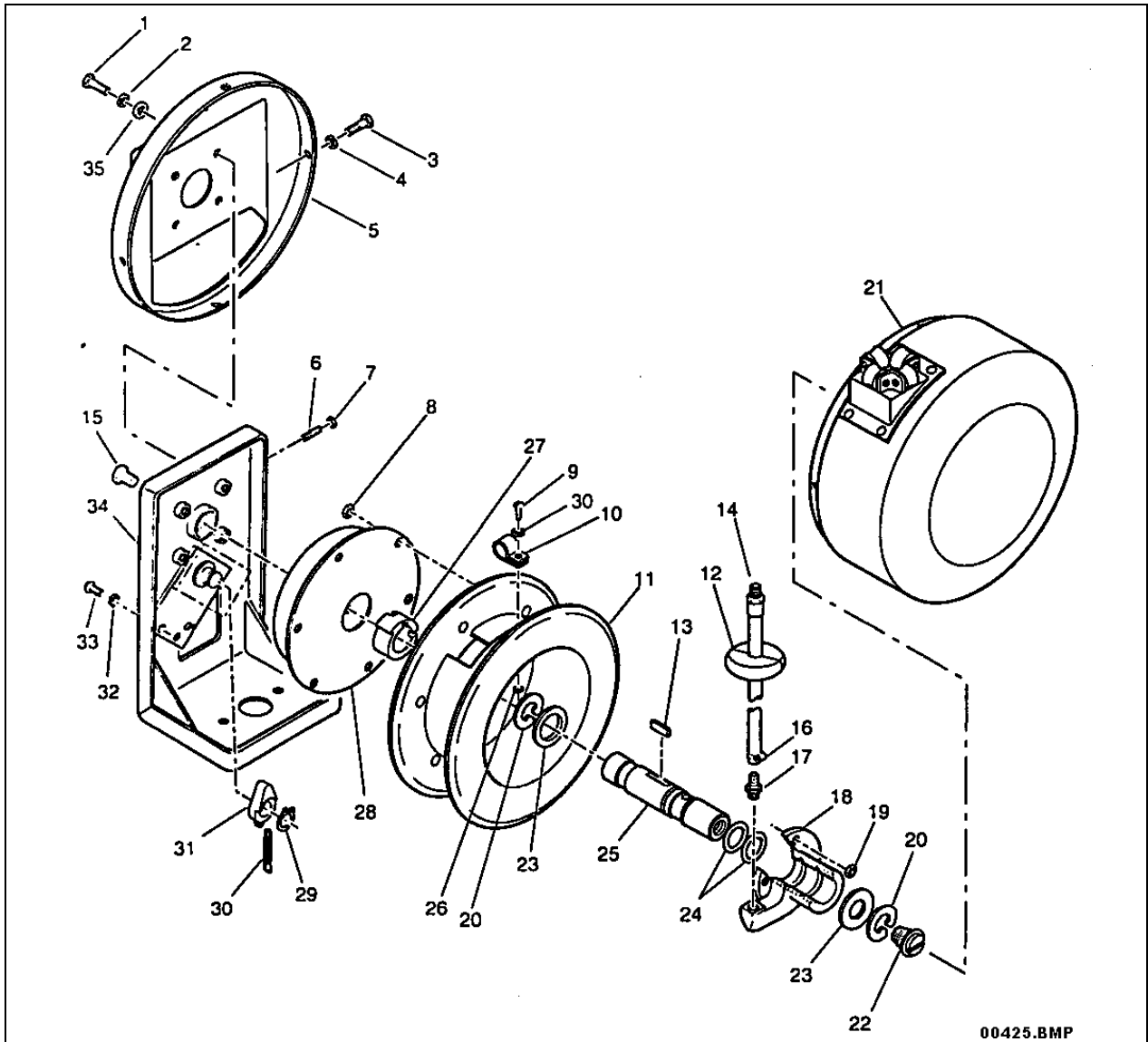
If reel will not develop tension or retract hose, the main spring, cup, and ratchet assembly will need to be replaced. To replace remove cover and guide assembly by removing the four screws and lock washers. Loosen set screw, nut, and drum assembly complete with hose and main shaft from stand. Remove the nuts, main spring, and cup & ratchet assembly from drum and replace. Align arrow on ratchet assembly 60 degrees from timing mark on drum as shown in illustration. To reassemble, reverse above procedure.

BITMAP 792
HERE

O-RING REPLACEMENT

Remove cover and guide assembly by removing the four screws and lock washers. Loosen hose clamp and remove hose from fitting. Remove snap ring, washer, nut, swivel, and **carefully** remove and discard old O-rings. Clean all contamination from mainshaft and swivel and install new O-rings. Apply a light coat of commercial grease to mainshaft and swivel; remove all excess grease. Install swivel, nut, washer, and snap ring. With these in place, reinstall hose to fitting and tighten clamp. Install cover and guide assembly by using the four screws and lock washers.

REPLACEMENT PARTS



| Reference Number | Part Number | Qty. | Description |
|------------------|-------------|------|-------------------------------|
| 1 | 00030P0115 | 4 | Screw (1/4-20 x 1/2 inch Hex) |
| 2 | 00101P0030 | 4 | Washer (1/4 inch lock) |
| 3 | 00006P0110 | 4 | Screw |
| 4 | 00101P0030 | 1 | Washer (1/4 inch lock) |
| 5 | 5879200000 | 1 | Stand Cover |
| 6 | 4004500000 | 1 | Set Screw |
| 7 | 00151P0050 | 1 | Nut (5/16-18 Jam) |
| 8 | 00160P0050 | 6 | Nut (10-24 Lock) |
| 9 | 00005P0110 | 1 | Screw |
| 10 | 3711400021 | 1 | Clamp (3/8" I.D. Hose) |
| | 3711400019 | 1 | Clamp (1/4" I.D. Hose) |
| 11 | 58786000SI | 1 | Drum Assembly |
| 12 | ST-1 | 1 | Hose Stop (5373200000) |
| 13 | 4077300007 | 1 | Key |
| 14 | H71180047 | 1 | Hose Assembly (ED633A) |
| | H71180028 | 1 | Hose Assembly (ED625A) |
| 15 | 00669P0041 | | Reducer (ED625A) |

| | | | |
|-----|--------------------------|---|--------------------------------------|
| 16 | 00671P0010 | | Hose Clamp |
| 17 | 00658P0035 | | Barb Fitting (ED633) |
| | 00658P0049 | | Barb Fitting (ED625) |
| | M72420031 | 1 | Swivel |
| 19 | 00160P0050 | 3 | Nut (10-24 Lock) |
| 20 | 00576P0046 | 1 | Snap Ring |
| 21 | 5877200000 | 1 | Cover & Guide Assembly |
| 22 | 00826P0301 | 1 | Pipe Plug |
| 23 | 4301000000 | 1 | Washer |
| 24* | C47040142 | 2 | O-Ring |
| 25 | M37700002 | 1 | Main shaft |
| 26 | 00151P0025 | 1 | Nut (1/4-20) |
| 27 | 4031800003 | 1 | Hub, Mainspring |
| 28* | 5877100000 | 1 | Mainspring, Cup and Ratchet Assembly |
| 29 | 00580P0050 | 1 | Retaining Ring |
| 30* | C60610118 | 1 | Spring, Ratchet |
| 31* | 5906100000 | 1 | Ratchet Lever |
| 32 | 00101P0015 | 2 | Washer |
| 33 | 01137P0057 | 1 | Washer |
| 34 | 58788000SI | 1 | Stand Assembly |
| 35 | 00126P0050 | 4 | Washer (1/4) |
| | *recommended spare parts | | |

Aero-Motive Company

W A Woodhead Industries Inc. Subsidiary
 PO Box 2678
 Kalamazoo, MI 49003-2678
 (616) 337 7700
 (800) 999 8559
 FAX: (800) 333 6119
 www.aeromotive.com

AKAPP Electro Industrie

W A Woodhead Industries Inc. Subsidiary
 Nijverheidsweg 14 Box 54
 NL-3771 ME Barneveld
 NL-3771 AB Barneveld
 Holland
 (31) 34 241 4022
 FAX: (31) 34 249 2384
 www.akapp.com

Woodhead Connectivity LTD.

W A Woodhead Industries Inc. Subsidiary
 Factory No. 9
 Rassau Industrial Estate
 Ebbw Vale Gwent NP3 5SD
 United Kingdom
 (0495) 35 0436
 FAX: (0495) 35 0877
 sales@wdhd.co.uk

Woodhead Asia PTE LTD.

W A Woodhead Industries Inc. Subsidiary
 401 Commonwealth Drive #04-04
 Haw Par Technocentre
 Singapore 0314
 (65) 261 6533
 FAX: (65) 479 3588
 sales@wasia.com.sg

Woodhead Canada LTD.

W A Woodhead Industries Inc. Subsidiary
 1090 Brevik Place
 Mississauga Ontario
 L4W 3Y5 Canada
 (905) 624-6518
 FAX: (905) 624-9151
 www.woodhead.ca