

SN Stainless Steel Hose Reel Series Service Manual

Aero-Motive Company

W A Woodhead Industries, Inc. Subsidiary

Important Safety Instructions

Please read this manual carefully and follow its instructions. Improper use or failure to follow these instructions could result in serious injury, death or property damage. Operators should be instructed in the safe and proper use and maintenance of this product. Keep this manual for future reference.

The following safety precautions call attention to potentially dangerous conditions.



DANGER: Immediate hazards which **WILL** result in severe personal injury or death.



WARNING: Hazards or unsafe practices which **COULD** result in severe personal injury or death.

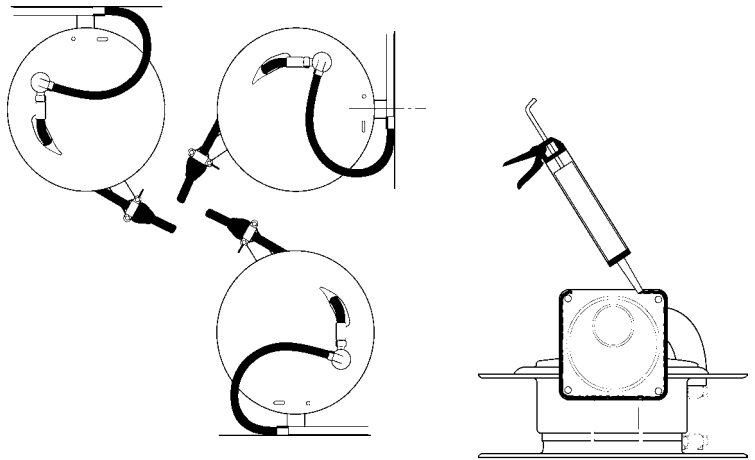


CAUTION: Hazards or unsafe practices which **MAY** result in *minor* personal injury or product or property damage.

INSTALLATION

MOUNTING

The reel can be wall-, floor-, or ceiling mounted according to the illustrations. Choose a way of mounting to avoid excessive bending of the hose against the outlet rollers. Select a level surface to mount the reel and use the template to mark the holes. Ensure suitable fixing bolts are used and they are secure. Use sealing washers under the bolt heads. Use a suitable sealing compound between the back of the footplate and the mounting position. When choosing a mounting place it should be noted the lifetime of chemicals and strong UV- or heat radiation can affect the hose.



DANGER: A secondary safety cable or chain is to be attached to all reels mounted overhead to prevent reel from falling. Immediate hazards **WILL** result in severe personal injury or death.

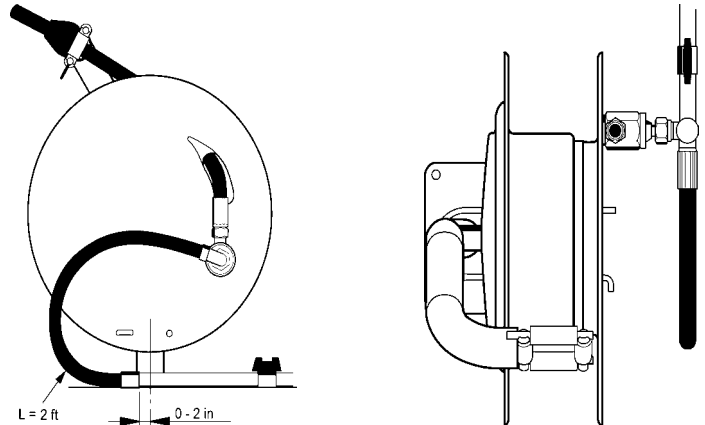
SECONDARY SUPPORT CHAIN

All reels mounted over head should have a secondary support chain to protect personnel in case of structure or mounting component failure. Attach one end of secondary support chain or cable to reel. Attach other end of secondary support chain or cable to a support component other than that which supports the reel. The chain or cable should be as short as possible allowing reel to drop no more than 6 to 12 inches if the primary connection is released.

SUPPLY HOSE

NOTE: Inlet hose must have a 90° fitting with a FEMALE NPTF thread and a minimum length of 2-ft. Working hose must have a straight fitting with a FEMALE NPTF thread.

The reel must be connected to the pipework system with inlet hose only. The length of the inlet hose must be minimum of 2-ft. in length (Typical 2-ft to 2¼-ft). Choose the right connection position for the fixed pipework. Check the inlet hose is not twisted after connecting. It is important the connection is parallel with the reel. A cutoff valve should be fitted on the pipe system before the hose connection.

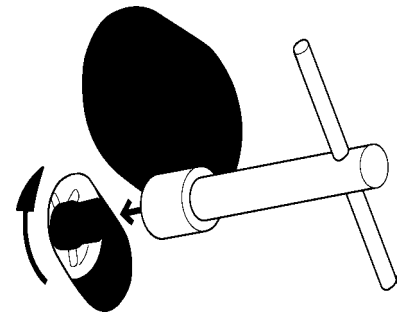


ADJUSTMENT

RATCHET LOCK

The hose reel is delivered with a ratchet mechanism, which retains the hose in the required outdrawn position. The ratchet will disengage if the hose is drawn out a little further and the hose then recoils to the drum. The hose should be held by hand as long as possible during the recoiling. If the hose is pulled out to its maximum payout, the ratchet could become locked. It is released by the following procedure:

1. Remove rubber plug from the drum side.
2. Carefully turn the shaft a quarter of a revolution clockwise to the stop position (do not force the shaft beyond this point).
3. Pull the hose until the ratchet is released.
4. Turn the shaft anti-clockwise back to stop position.
5. Replace rubber plug.



TENSION ADJUSTMENT

CAUTION: Failure to test for adequate spring revolutions can cause damage. Hazards or unsafe practices **MAY** result in *minor* personal injury or product or property damage.

NOTE: Pull hose out completely to insure enough spring revolutions remain for operating. Always leave at least 1-2 turns between full extension and when the spring is wound tight (bottomed out). If entire hose assembly cannot be pulled out, decrease spring tension until full extension is possible.

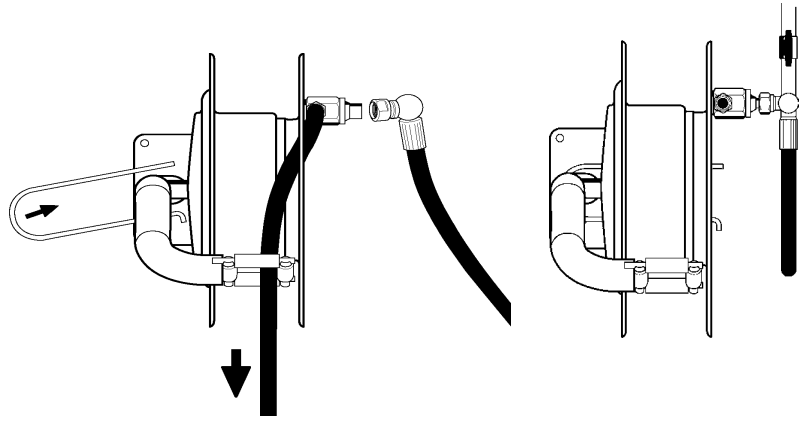
Reels are shipped without hose and require pre-tensioning after hose is installed and *before* making final hose connections. To pre-tension hose reel, pull hose out far enough to allow one full wrap of hose to be looped back over drum assembly. Prevent drum from turning and loop hose back on drum. Repeat steps above until desired tension is achieved. After tension is set, pull hose out completely to check spring travel. If full hose extension is not possible, remove pre-tension turns until full hose tension is possible. Failure to test in this manner may cause spring damage. Complete all hose connections.

SERVICE

HOSE AND SWIVEL INSTALLATION

NOTE: Inlet hose must have a 90° fitting with a female NPTF thread and a minimum length of 2-ft. Working hose must have a straight fitting with a female NPTF thread.

Insure safety loop is installed correctly. Install swivel onto flange. Mount reel in intended place. Pull hose through roller guide and opening in drum flange. Connect end of hose onto swivel. Lay hose fully extended from reel on floor. Install hose stop. Carefully remove safety loop without allowing drum to turn. Retain safety loop on stand as shown or in a safe place for future use. Release ratchet mechanism by pulling hose slightly in direction of arrow. Finally, let hose slowly coil up on drum.



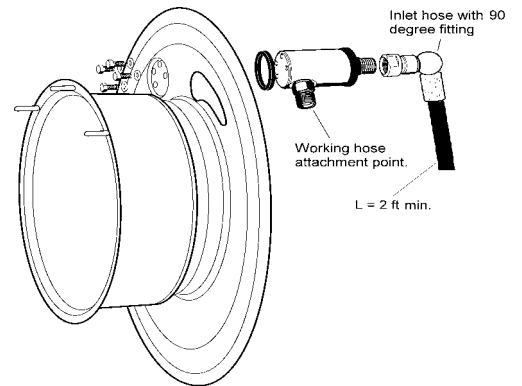
HOSE AND SWIVEL REPLACEMENT

WARNING: Before performing any service, always disconnect and lock out compressed air or fluid media before attempting any service. Hazards or unsafe practices COULD result in severe personal injury or death.

NOTE: Inlet hose must have a 90° fitting with a **FEMALE** NPTF thread and a minimum length of 2-ft. Working hose must have a straight fitting with a **FEMALE** NPTF thread.

When replacing hose or swivel, observe following steps:

1. Turn off supply of input fluid media
2. Pull out hose completely
3. Engage the safety loop
4. Remove existing hose or swivel
5. Install new hose or swivel according to 'Hose and Swivel Installation'
6. Connect the intake hose onto the swivel
7. Install outlet component on the outlet end of the hose
8. Recheck connections and turn on the supply of fluid media



MAINSRING REPLACEMENT

Mainspring is containerized and **safe** to handle. If reel will not develop tension or retract hose, mainspring assembly will need to be replaced. To replace containerized mainspring, follow steps listed.

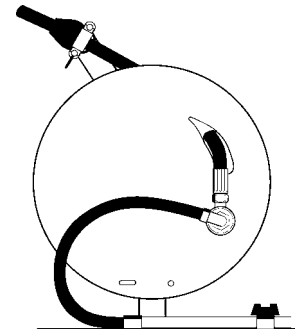
1. Turn off and lockout the media supply to the reel.
2. Remove the eight nuts on the drum assembly.
3. Remove outer portion of the drum.
4. Remove mainspring assembly(s).

For re-assembly, follow the steps in reverse order.

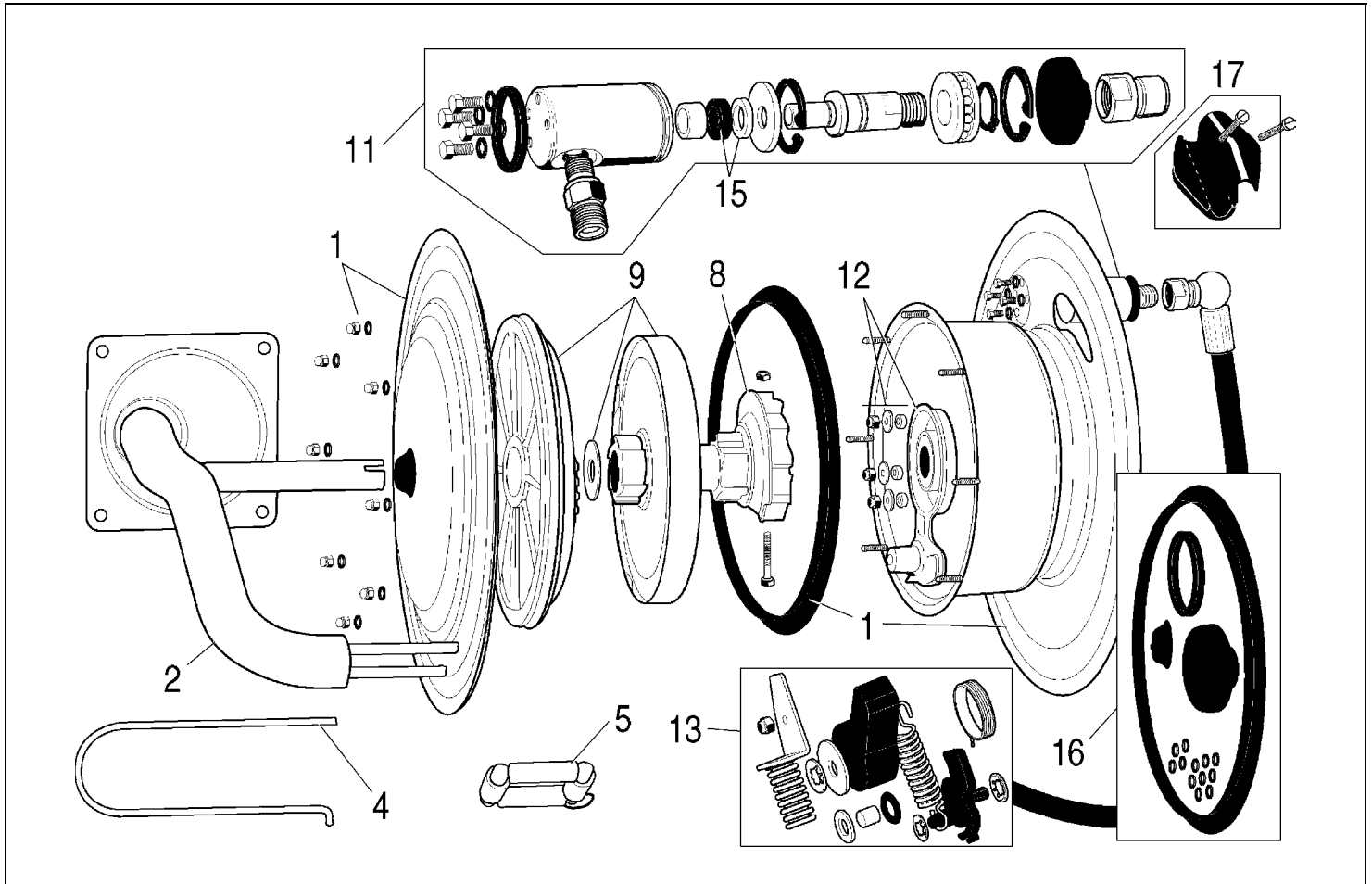
MAINTENANCE

When performing regular maintenance on reel, check following items:

1. Check mainspring function by testing if the hose retracts properly.
2. Check swivel and hose couplings don't leak. Change seal if required. Clean swivel and couplings.
3. Check reel's external seals. If any are cracked, all should be replaced.
4. Check that hose is intact. Clean hose if dirty. Dismantle hose outlet and clean parts manually.
5. Check ratchet mechanism.
6. Check mounting of reel on wall or ceiling.



REPLACEMENT PARTS



Reference Number *	Part Number	Qty.	Description
1	H42330560	1	Drum including seal/Drum side including seals/Dome nuts w/Sealing washers
2	H22110428	1	Stand with foot plate
4	M50640015	1	Safety loop
5	H25410121	1	Outlet, complete w/Locking split pin
8	M04820002	1	Spring hub/ratchet plate
9	H41220151	1	Spring cassette with spring hub and bearing for SN400
	H41220160	1	Spring cassette with spring hub and bearing for SN600
11	H72320033	1	Swivel, complete; 1/2" NPT
	H72320034	1	Swivel, complete; 3/4" NPT
12	H46230023	1	Ratchet arm with bearing
13	H46230022	1	Kit; Ratchet set
15	H73130033	1	Seal/support washer
16	H73130034	1	Kit; Seals and o-rings
17	H33340012	1	Kit; Hose stop; 1/2"
	H33340013	1	Kit; Hose stop; 3/4"

Aero-Motive Company

W A Woodhead Industries Inc. Subsidiary
 PO Box 2678
 Kalamazoo, MI 49003-2678
 (616) 337 7700
 (800) 999 8559
 FAX: (800) 333 6119
 www.aeromotive.com

AKAPP Electro Industrie

W A Woodhead Industries Inc. Subsidiary
 Nijverheidsweg 14 Box 54
 NL-3771 ME Barneveld
 NL-3771 AB Barneveld
 Holland
 (31) 34 241 4022
 FAX: (31) 34 249 2384

Woodhead Connectivity LTD.

W A Woodhead Industries Inc. Subsidiary
 Factory No. 9
 Rassau Industrial Estate
 Ebbw Vale Gwent NP3 5SD
 United Kingdom
 (0495) 35 0436
 FAX: (0495) 35 0877

Woodhead Asia PTE LTD.

W A Woodhead Industries Inc. Subsidiary
 401 Commonwealth Drive #04-04
 Haw Par Technocentre
 Singapore 0314
 (65) 261 6533
 FAX: (65) 479 3588
 sales@wasia.com.sg

Woodhead Canada LTD.

W A Woodhead Industries Inc. Subsidiary
 1090 Brevik Place
 Mississauga Ontario
 L4W 3Y5 Canada
 (905) 624-6518
 FAX: (905) 624-9151
 www.woodhead.ca