



## **IMPORTANT SAFETY INSTRUCTIONS**

Please read this manual carefully and follow its instructions. Improper use or failure to follow these instructions could result in serious injury, death or property damage. Operators should be instructed in the safe and proper use and maintenance of this product. Keep this manual for future reference.

The following safety precautions call attention to potentially dangerous conditions.



**DANGER:** Immediate hazards which **WILL** result in severe personal injury or death.



**WARNING:** Hazards or unsafe practices which **COULD** result in severe personal injury or death.



**CAUTION:** Hazards or unsafe practices which **MAY** result in *minor* personal injury or product or property damage.

**NOTE:** Instruct operators in the safe, proper use and maintenance. Keep this manual for future reference.

## **INSTALLATION**



**WARNING:** Failure to read, understand, and follow these instructions may result in hazards or unsafe practices **COULD** result in severe personal injury or death.



**CAUTION:** Operators need to be instructed on the safe, proper use and maintenance of this product. Keep this manual for future references. Hazards or unsafe practices **MAY** result in *minor* personal injury or product or property damage.

## **MOUNTING**

Some reels come complete with hose and are set at proper tension, ready to install. The fixed base of the reel allows mounting in several different positions including base up, base down, or wall mounted. Here are general mounting requirements:

- Main-shaft must be horizontal.
- Centerline of the spool assembly must be in-line with the hose pull out.
- When mounted overhead in base up position, add a secondary chain, bracket or other safety device to prevent reel from falling in case the mounting bolts are removed or become loosened from vibration.

## **SECONDARY SUPPORT CHAIN**



**DANGER:** A secondary safety cable or chain is to be attached to all reels mounted overhead to prevent reel from falling. Immediate hazards **WILL** result in severe personal injury or death.

All reels mounted over head should have a secondary support chain to protect personnel in case of structure or mounting component failure. Attach one end of secondary support chain or cable to reel. Attach other end of secondary support chain or cable to a support component other than that which supports the reel. The chain or cable should be as short as possible allowing reel to drop no more than 6 to 12 inches if the primary connection is released.

## **SUPPLY HOSE**

Assemble supply hose to main-shaft. **Do not** use rigid pipe at input connection. Use Teflon tape or pipe sealant approved for use with technical oxygen to hose fitting threads.

**NOTE:** To avoid damage to the swivel, use a wrench to support the swivel fitting while tightening the hose.

## **ADJUSTMENT**

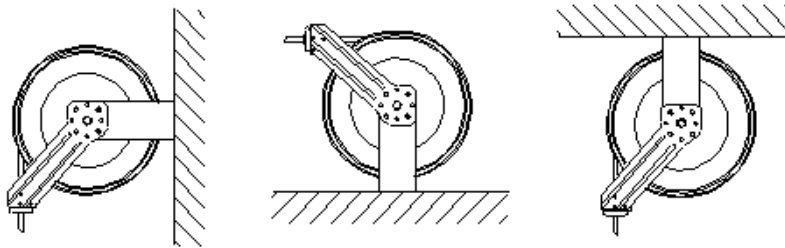
### **RATCHET LOCK**

**CAUTION:** To avoid damage to the reel or personnel, always hold on to the hose while it is rewinding. Hazards or unsafe practices which **MAY** result in *minor* personal injury or product or property damage.

Ratchet lock works with reel mounted in any position and needs no adjustment. Check reel for correct operation by slowly pulling out the hose. A “clicking” noise will be heard every half revolution of the drum. To latch the reel, pull out the hose and allow it to retract after hearing the first second or third “click”. To unlatch, slowly pull out the hose until the “clicking” noise stops, then let the hose retract until the hose stop rests against the hose guide. To disable, ratchet parts must be removed.

### **HOSE GUIDE ARM ADJUSTMENT**

For maximum hose life, adjust guide arm so that the hose payout is in line with guide assembly (see illustration below). To adjust the guide arm, remove screws, and rotate guide arm 90 degrees to next group of mounting holes in stand assembly.



### **TENSION ADJUSTMENT**

**CAUTION:** Failure to test for adequate spring revolutions can cause damage. Hazards or unsafe practices **MAY** result in *minor* personal injury or product or property damage.

**NOTE:** Pull hose out completely to insure enough spring revolutions remain for operating. Always leave at least 1-2 turns between full extension and when the spring is wound tight (bottomed out). If entire hose assembly cannot be pulled out, decrease spring tension until full extension is possible.

Reels shipped with hose installed are pre-tensioned at the factory. Reels shipped without hose require pre-tensioning after hose is installed and *before* making final hose connections. To pre-tension hose reel, pull hose out far enough to allow one full wrap of hose to be looped back over drum assembly. Hold, drum from turning and loop hose back on drum. Repeat steps above until desired tension is achieved. After tension is set, pull hose out completely to check spring travel. If full hose extension is not possible, remove pre-tension turns until full hose tension is possible. Failure to test in this manner may cause spring damage. Complete all hose connections.

## **SERVICE**

**WARNING:** Before performing any service, always disconnect and lock out the welding gases, and remove all spring tension before attempting any service. Hazards or unsafe practices **COULD** result in *severe* personal injury or death.

### **HOSE INSTALLATION AND REPLACEMENT**

Remove all tension from reel (see Tension Adjustment). Remove ball-stop, unwind hose on reel, and unscrew hose from swivel. Feed new hose through roller guide and through slot in flange. Then connect hose to swivel (use Teflon tape or thread sealant approved for use with technical oxygen), wind onto drum assembly, and re-tension reel.

## MAINSRING ASSEMBLY REPLACEMENT

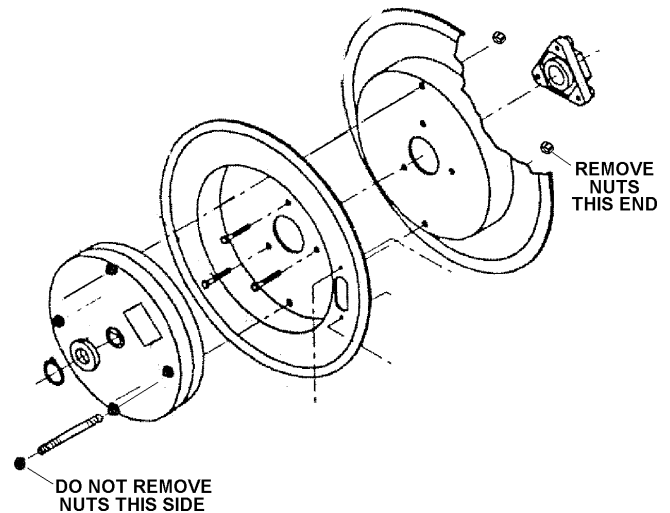
**WARNING:** Never, under any circumstances, remove spring from its container assembly. Replacement springs are assembled in a sealed assembly for safety and there is no need to remove them. Serious injury or death **COULD** result from removal of spring from its container assembly.

**NOTE:** Mainspring is completely self-contained and **safe** to handle. If spring is to be replaced when not broken make sure to remove all tension from reel before proceeding.

If reel will not develop tension or retract hose, the main-spring will need to be replaced.

To replace main-spring:

- Remove supply hose to swivel
- Remove swivel by loosening shaft end
- Remove retaining ring and spacer washers from main-shaft.
- Do not attempt to remove screws from swivel side of spring pocket. Instead, remove nuts from the stand side of the drum cavity.
- Pull containerized spring pocket assembly off drum axle
- Reverse procedure to reassemble (use Teflon tape or thread sealant on hose connections)
- Re-tension reel as in "Tension Adjustment"



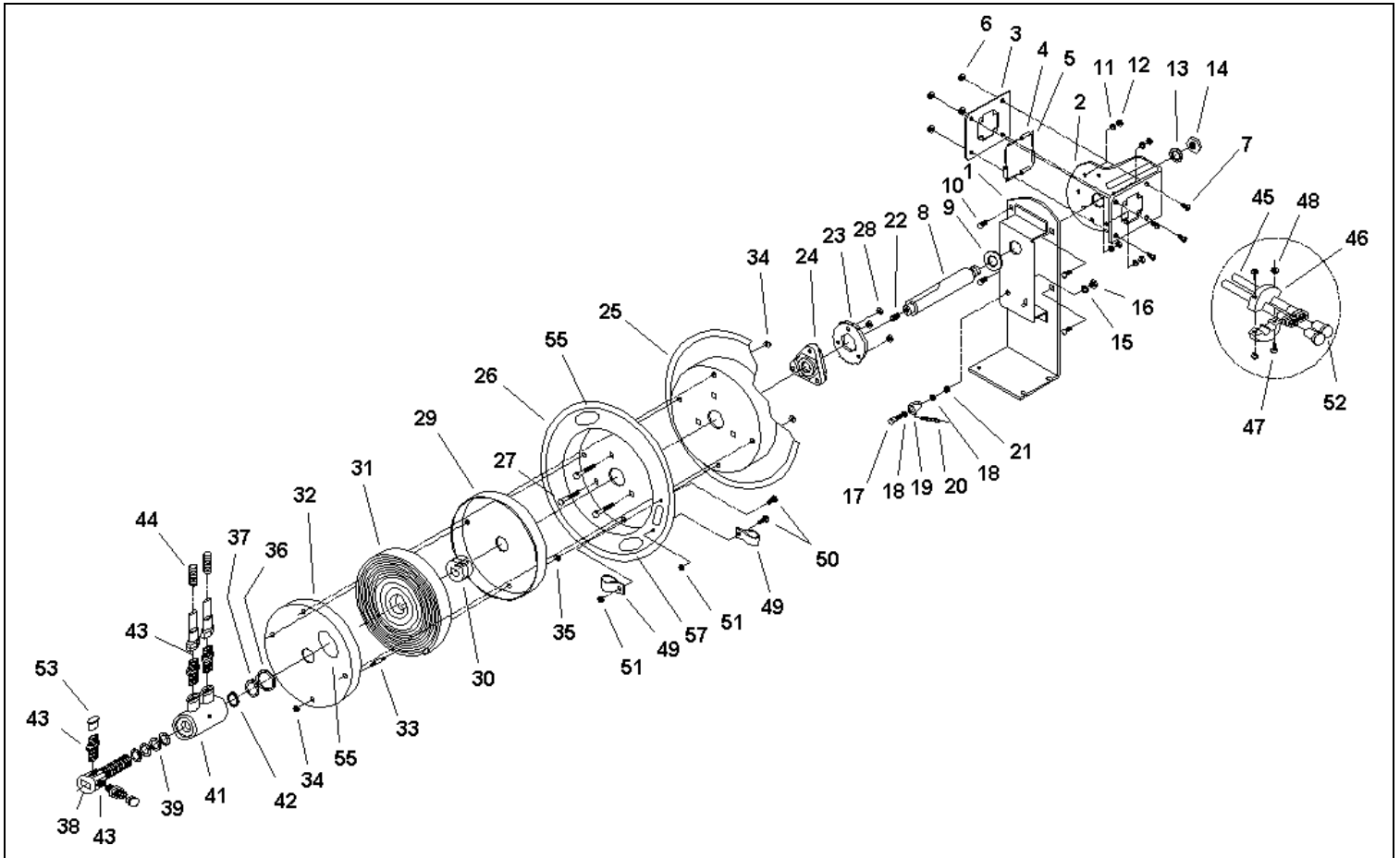
## SWIVEL REPLACEMENT

**NOTE:** Swivel is only sold as complete assembly. If o-rings are leaking, complete swivel must be replaced.

To replace swivel:

- Turn off or lockout media supply to reel
- Remove all tension from reel (see Tension Adjustment)
- Disconnect supply hose to swivel
- Remove swivel by loosening shaft end
- Disconnect reel hose from swivel
- Reverse above procedure and install new swivel (use Teflon tape or thread sealant approved for technical oxygen on connections)

## REPLACEMENT PARTS



**NOTE:** The WB reels have common wearing components available as replacement parts. If the part you need is not found on this list, a new reel may be your best alternative.

Reference Items	Part Number	Qty.	Description
29,30,31,32, 33,34,35	H41220134	1	Spring Assembly
38,39,41,43 44,53	H72410007	1	Swivel Assembly; Dual Path
15,16,17,18, 19,20,21	H46220004	1	Ratchet Kit
4,5,6, 7	H44110025	1	Guide Roller Kit
45,52	H71190014 H71190015 H71190016	1	Dual Welding Hose Assembly; 30 ft Dual Welding Hose Assembly; 50 ft Dual Welding Hose Assembly; 65 ft
46,47, 48	H73130042	1	Hose Stop Kit

### Aero-Motive Company

**W** A Woodhead Industries Inc. Subsidiary  
PO Box 2678  
Kalamazoo, MI 49003-2678  
(616) 337 7700  
(800) 999 8559  
FAX: (800) 333 6119  
www.aeromotive.com

### AKAPP Electro Industrie

**W** A Woodhead Industries Inc. Subsidiary  
Nijverheidsweg 14 Box 54  
NL-3771 ME Barneveld  
NL-3771 AB Barneveld  
Holland  
(31) 34 241 4022  
FAX: (31) 34 249 2384  
www.akapp.com

### Woodhead Connectivity LTD.

**W** A Woodhead Industries Inc. Subsidiary  
Factory No. 9  
Rassau Industrial Estate  
Ebbw Vale Gwent NP3 5SD  
United Kingdom  
(0495) 35 0436  
FAX: (0495) 35 0877  
sales@wdhd.co.uk

### Woodhead Asia PTE LTD.

**W** A Woodhead Industries Inc. Subsidiary  
401 Commonwealth Drive #04-04  
Haw Par Technocentre  
Singapore 0314  
(65) 261 6533  
FAX: (65) 479 3588  
sales@wasia.com.sg

### Woodhead Canada LTD.

**W** A Woodhead Industries Inc. Subsidiary  
1090 Brevik Place  
Mississauga Ontario  
L4W 3Y5 Canada  
(905) 624-6518  
FAX: (905) 624-9151  
www.woodhead.ca