



IMPORTANT SAFETY INSTRUCTIONS

Please read this manual carefully and follow its instructions. Improper use or failure to follow these instructions could result in serious injury, death or property damage. Operators should be instructed in the safe and proper use and maintenance of this product. Keep this manual for future reference.

The following safety precautions call attention to potentially dangerous conditions.



DANGER: Immediate hazards which **WILL** result in severe personal injury or death.



WARNING: Hazards or unsafe practices which **COULD** result in severe personal injury or death.



CAUTION: Hazards or unsafe practices which **MAY** result in *minor* personal injury or product or property damage.

NOTE: Instruct operators in the safe, proper use and maintenance. Keep this manual for future reference.

INSTALLATION



WARNING: Failure to read, understand, and follow these instructions may result in hazards or unsafe practices **COULD** result in severe personal injury or death.



CAUTION: Operators need to be instructed on the safe, proper use and maintenance of this product. Keep this manual for future references. Hazards or unsafe practices **MAY** result in *minor* personal injury or product or property damage.

MOUNTING

Some reels come complete with hose and are set at proper tension, ready to install. The fixed base of the reel allows mounting in several different positions including base up, base down, or wall mounted. Here are general mounting requirements:

- Main-shaft must be horizontal.
- Centerline of the spool assembly must be in-line with the hose pull out.
- When mounted overhead in base up position, add a secondary chain, bracket or other safety device to prevent reel from falling in case the mounting bolts are removed or become loosened from vibration.

SECONDARY SUPPORT CHAIN



DANGER: A secondary safety cable or chain is to be attached to all reels mounted overhead to prevent reel from falling. Immediate hazards **WILL** result in severe personal injury or death.

All reels mounted over head should have a secondary support chain to protect personnel in case of structure or mounting component failure. Attach one end of secondary support chain or cable to secondary support point on reel. Attach other end of secondary support chain or cable to the reel. The chain or cable should be as short as possible allowing reel to drop no more than 6 to 12 inches if the primary connection is released.

SUPPLY HOSE

Assemble supply hose to main-shaft. **Do not** use rigid pipe at input connection. Use Teflon tape or pipe sealant to reel hose fitting threads.

NOTE: To avoid damage to swivel, use a wrench to support swivel fitting while tightening hose.

ADJUSTMENT

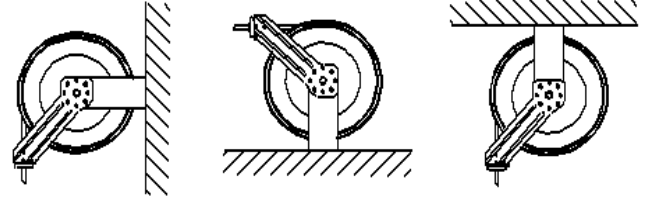
RATCHET LOCK

CAUTION: To avoid damage to the reel or personnel, always hold on to the hose while it is rewinding. Hazards or unsafe practices which **MAY** result in *minor* personal injury or product or property damage.

Ratchet lock works with reel mounted in any position and needs no adjustment. Check reel for correct operation by slowly pulling out the hose. A “clicking” noise will be heard every half revolution of the drum. To latch the reel, pull out the hose and allow it to retract after hearing the first, second, or third “click”. To unlatch, slowly pull out the hose until the “clicking” noise stops, then let the hose retract until the hose stop rests against the hose guide. To disable, ratchet parts must be removed.

HOSE GUIDE ARM ADJUSTMENT

For maximum hose life, adjust guide arm so that the hose payout is in line with guide assembly (see illustration below). To adjust guide arm, remove screws and rotate guide arm 90 degrees to next group of mounting holes in stand assembly.



TENSION ADJUSTMENT

CAUTION: Failure to test for adequate spring revolutions can cause damage. Hazards or unsafe practices **MAY** result in *minor* personal injury or product or property damage.

NOTE: Pull hose out completely to insure enough spring revolutions remain for operating. Always leave at least 1-2 turns between full extension and when spring is wound tight (bottomed out). If entire hose assembly cannot be pulled out, decrease spring tension until full extension is possible.

Reels shipped with hose installed are pre-tensioned at the factory. Reels shipped without hose require pre-tensioning after hose is installed and *before* making final hose connections. To pre-tension hose reel, pull hose out to allow one full wrap of hose to be looped back around drum assembly. Engage ratchet, remove ball stop, and loop hose back around drum. Repeat steps until desired tension is achieved. After tension is set, pull hose out completely to check spring travel. If full hose extension is not possible, remove pre-tension turns until full hose tension is possible. Failure to test in this manner may cause spring damage. Complete all hose connections.

SERVICE

WARNING: Before performing any service, always disconnect and lock out compressed air or fluid, and remove all spring tension. Hazards or unsafe practices **COULD** result in *severe* personal injury or death.

HOSE INSTALLATION AND REPLACEMENT

Remove all tension from reel (see Tension Adjustment). Remove ball-stop, unwind hose on reel, and disconnect hose from swivel. Feed new hose through roller guide and through slot in flange. Then connect hose to swivel (use Teflon tape or thread sealant), wind onto drum assembly, and re-tension reel.

SWIVEL REPLACEMENT

NOTE: Swivel only sold as complete assembly. If o-rings are leaking, complete swivel must be replaced. Test for leaks by spraying soapy water on swivel.

To replace swivel:

- Hose should be completely retracted on reel.
- Turn off or lockout air/fluid supply to reel.
- Disconnect supply hose to swivel.
- Remove swivel by loosening its hex end.
- Disconnect reel hose from swivel
- Reverse above procedure and install new swivel using Teflon tape or sealant on thread connections.

MAINSRING ASSEMBLY REPLACEMENT

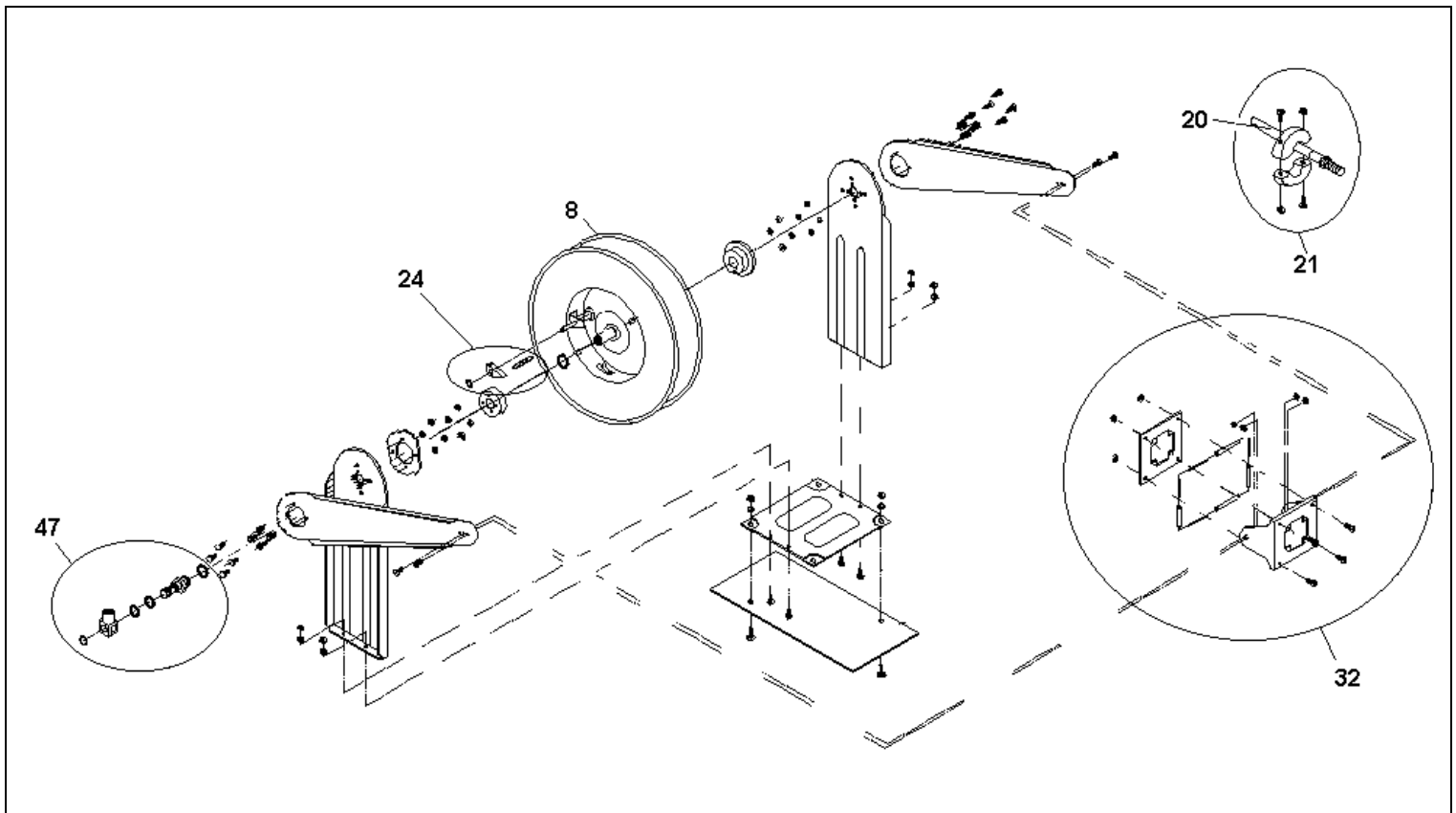
WARNING: Replacement springs are supplied in a sealed enclosure for safety. There is no need to open them for repair. Serious injury or death **COULD** result from removal of spring from its enclosure.

NOTE: Main-spring is completely self-contained and safe to handle. If spring is to be replaced when not broken make sure to remove all tension from reel before proceeding.

If reel will not develop tension or retract hose, the main-spring spool assembly will need to be replaced. To replace main-spring spool assembly:

- Remove stop from hose
- Remove roller guide support bracket on each side of reel
- Remove roller guide arms on each side of reel
- Disassemble shaft support plate from Base
- Remove stand and spring hub on spring side of reel
- Remove main-spring spool assembly
- Reverse procedure to add new spring assembly
- Re-tension reel as in "Tension Adjustment"

REPLACEMENT PARTS



NOTE: The TL and TH reels have common wearing components available as replacement parts. If the part you need is not found on this list, a new reel may be your best alternative.

Reference	Part Number	Qty.	Description
8	H41220137	1	Spring and Spool Assembly for TL Series
	H41220138		Spring and Spool Assembly for TM Series
	H41220147		Spring and Spool Assembly for TH Series
47	H72320038	1	Swivel Assembly for TL3XX, TM3XX
	H72320039		Swivel Assembly for TL4XX, TM4XX
	H72320040		Swivel Assembly for TH2XX
	H72320041		Swivel Assembly for TH3XX
20	H71130007	1	Hose Assembly for TL330 30 ft 3/8" ID
	H71130008		Hose Assembly for TL350 50 ft 3/8" ID
	H71130009		Hose Assembly for TL430 30 ft 1/2" ID
	H71130010		Hose Assembly for TL450 50 ft 1/2" ID
	H71130021		Hose Assembly for TM330 30 ft 3/8" ID
	H71130022		Hose Assembly for TM350 50 ft 3/8" ID
	H71130023		Hose Assembly for TM430 30 ft 1/2" ID
	H71130024		Hose Assembly for TM450 50 ft 1/2" ID
	H71130025		Hose Assembly for TH230 30 ft 1/4" ID
	H71130026		Hose Assembly for TH250 50 ft 1/4" ID
H71130027	Hose Assembly for TH330 30 ft 3/8" ID		
H71130028	Hose Assembly for TH350 50 ft 3/8" ID		
24	H46220003	1	Ratchet Kit
32	H44110026	1	Roller Guide Kit
21	H73340009	1	Hose Stop Kit; TH2XX
	H73340010		Hose Stop Kit; TL3XX, TM3XX, TH3XX
	H73340011		Hose Stop Kit; TL4XX, TM4XX
	H73340012		Hose Stop Kit; TL400
	H73340013		Hose Stop Kit; TM400
	H73340014		Hose Stop Kit; TH300

Aero-Motive Company

W A Woodhead Industries Inc. Subsidiary
 PO Box 2678
 Kalamazoo, MI 49003-2678
 USA
 (269) 337 7700 / (800) 999 8559
 FAX: (800) 333 6119
www.aeromotive.com
techhelp@aeromotive.com

Woodhead Connectivity LTD.

W A Woodhead Industries Inc. Subsidiary
 Factory No. 9
 Rassau Industrial Estate
 Ebbw Vale Gwent NP23 5SD
 United Kingdom
 44-1495-356300
 FAX: 44-1495-356301
sales@wdhd.co.uk

Woodhead Asia PTE LTD.

W A Woodhead Industries Inc. Subsidiary
 No. 4 Toh Tuck Link
 Level 3 Mezzanine
 Markono Logistics Bldg.
 Singapore 596226
 65-6-261-6533
 FAX: 65-6-261-3588
sales@wasia.com.sg

Woodhead Canada LTD.

W A Woodhead Industries Inc. Subsidiary
 1090 Brevik Place
 Mississauga Ontario
 L4W 3Y5 Canada
 (905) 624-1079
 FAX: (905) 624-9151
www.woodhead.ca