



IMPORTANT SAFETY INSTRUCTIONS

Please read this manual carefully and follow its instructions. Improper use or failure to follow these instructions could result in serious injury, death or property damage. Operators should be instructed in the safe and proper use and maintenance of this product. Keep this manual for future reference.

The following safety precautions call attention to potentially dangerous conditions.



DANGER: Immediate hazards which **WILL** result in severe personal injury or death.



WARNING: Hazards or unsafe practices which **COULD** result in severe personal injury or death.



CAUTION: Hazards or unsafe practices which **MAY** result in *minor* personal injury or product or property damage.

NOTE: Instruct operators in the safe, proper use and maintenance. Keep this manual for future reference.

INSTALLATION



WARNING: Failure to read, understand, and follow these instructions may result in hazards or unsafe practices **COULD** result in severe personal injury or death.



CAUTION: Operators need to be instructed on the safe, proper use and maintenance of this product. Keep this manual for future references. Hazards or unsafe practices **MAY** result in *minor* personal injury or product or property damage.

ASSEMBLY

When you receive your new Air Hose Reel, some assembly will be required. Check to ensure you received the Handle Assembly and Swivel Assembly.

- Attach handle to the link lever.
- Apply Teflon tape or pipe sealant to swivel assembly. Thread swivel into shaft and tighten.
- Lubricate bearings with light machine oil every three months or as necessary.

MOUNTING

The fixed base of the reel allows mounting in several different positions including base up, base down, or wall mounted. Here are general mounting requirements:

- Main-shaft must be horizontal.
- Centerline of the spool assembly must be in line with the hose pull out.
- When mounted overhead in base up position, add a secondary chain, bracket or other safety device to prevent reel from falling in case the mounting bolts are removed or become loosened from vibration.

SUPPLY HOSE

Assemble supply hose to main shaft. **Do not** use rigid pipe at input connection. Use Teflon tape or pipe sealant to reel hose fitting threads

NOTE: To avoid damage to the swivel, use a wrench to support the swivel fitting while tightening the hose.

SERVICE



WARNING: Before performing any service, always disconnect and lock out compressed air or fluid before attempting any service. Hazards or unsafe practices **COULD** result in severe personal injury or death.

HOSE INSTALLATION AND REPLACEMENT

Apply Teflon tape or pipe sealant to reel hose fitting threads. Insert hose through flange, connect to outlet elbow and tighten.

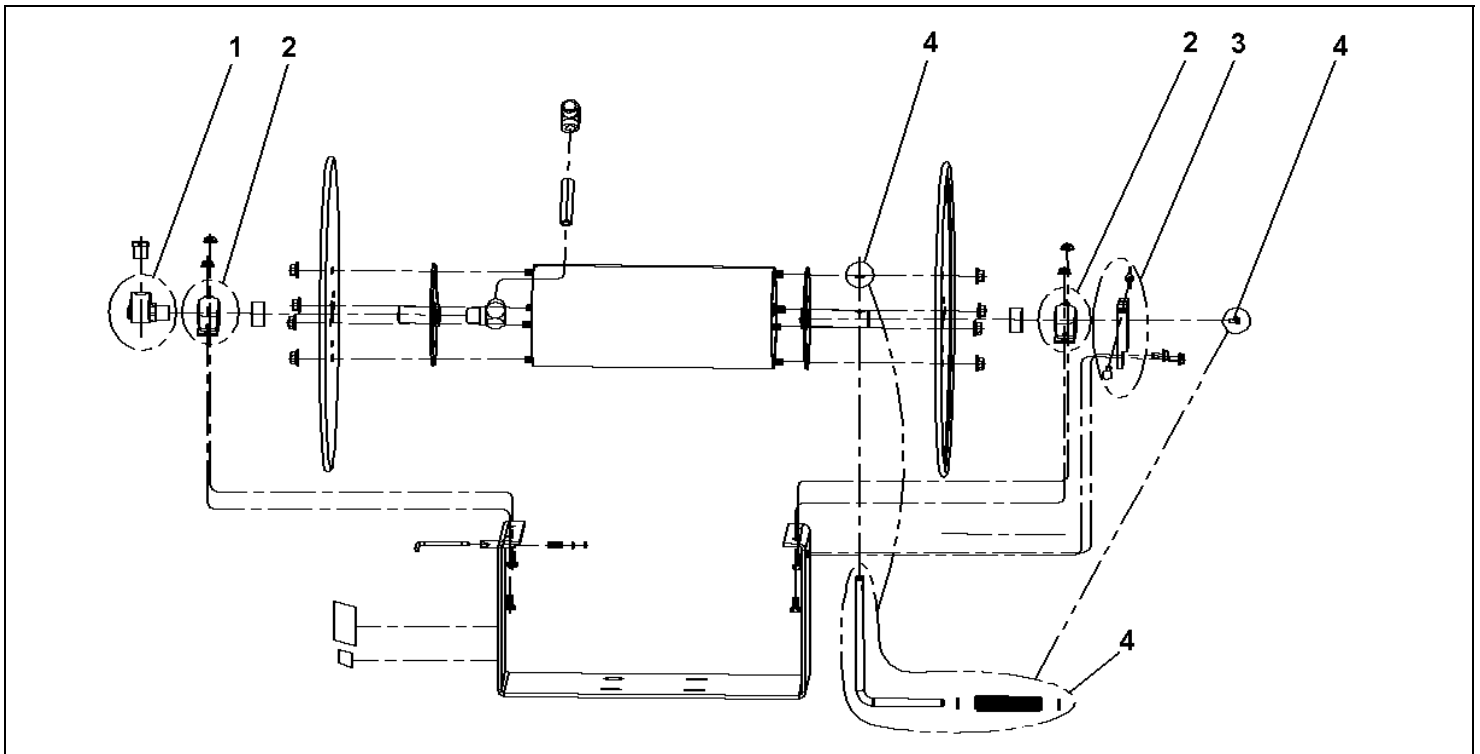
O-RING REPLACEMENT

NOTE: Swivel only sold as complete assembly. If o-rings are leaking, complete swivel must be replaced. You may test for leaks using soapy water.

To replace swivel:

- Disconnect supply hose to swivel
- Remove swivel by loosening its hex end
- Reverse above procedure and install new swivel (use Teflon tape or thread sealant on connections)

REPLACEMENT PARTS



NOTE: If the part you need is not found on this list, a new reel is your best alternative.

Reference Number	Part Number	Qty.	Description
1	H72320067	1	Swivel Assembly; 3/8"; 3000 psi
	H72320068		Swivel Assembly; 1/2"; 3000 psi
2	H40210011	2	Kit; Bearing
3	H54610005	1	Kit; Friction Brake
4	H55120016	1	Kit; Crank Arm

Aero-Motive Company

W A Woodhead Industries Inc. Subsidiary
 PO Box 2678
 Kalamazoo, MI 49003-2678
 USA
 (269) 337 7700 / (800) 999 8559
 FAX: (800) 333 6119
 www.aeromotive.com
 techhelp@aeromotive.com

AKAPP Electro Industrie

W A Woodhead Industries Inc. Subsidiary
 Nijverheidsweg 14 Box 54
 NL-3771 AB Barneveld
 Holland
 (31) 342 403900
 FAX: (31) 342 403912
 Info@akapp.com
 www.akapp.com

Woodhead Connectivity LTD.

W A Woodhead Industries Inc. Subsidiary
 Factory No. 9
 Rassau Industrial Estate
 Ebbw Vale Gwent NP23 5SD
 United Kingdom
 44-1495-356313
 FAX: 44-1495-356314
 sales@wdhd.co.uk

Woodhead Asia PTE LTD.

W A Woodhead Industries Inc. Subsidiary
 401 Commonwealth Drive #04-04
 Haw Par Technocentre
 Singapore 0314
 (65) 261 6533
 FAX: (65) 261 3588
 sales@wasia.com.sg

Woodhead Canada LTD.

W A Woodhead Industries Inc. Subsidiary
 1090 Brevik Place
 Mississauga Ontario
 L4W 3Y5 Canada
 (905) 624-1079
 FAX: (905) 624-9151
 www.woodhead.ca