



## **IMPORTANT SAFETY INSTRUCTIONS**

Please read this manual carefully and follow its instructions. Improper use or failure to follow these instructions could result in serious injury, death or property damage. Operators should be instructed in the safe and proper use and maintenance of this product. Keep this manual for future reference.

The following safety precautions call attention to potentially dangerous conditions.



**DANGER:** Immediate hazards which **WILL** result in severe personal injury or death.



**WARNING:** Hazards or unsafe practices which **COULD** result in severe personal injury or death.



**CAUTION:** Hazards or unsafe practices which **MAY** result in *minor* personal injury or product or property damage.

**NOTE:** Instruct operators in the safe, proper use and maintenance. Keep this manual for future reference.

## **INSTALLATION**



**WARNING:** Failure to read, understand, and follow these instructions may result in hazards or unsafe practices **COULD** result in severe personal injury or death.



**CAUTION:** Operators need to be instructed on the safe, proper use and maintenance of this product. Keep this manual for future references. Hazards or unsafe practices **MAY** result in *minor* personal injury or product or property damage.

## **ASSEMBLY**

When you receive your new Air Hose Reel, some assembly will be required. Check to ensure you received the Handle Assembly and Swivel Assembly.

- Attach handle to the link lever.
- Apply Teflon tape or pipe sealant to swivel assembly. Thread swivel into shaft and tighten.

## **MOUNTING**

The fixed base of the reel allows mounting in several different positions including base up, base down, or wall mounted. Here are general mounting requirements:

- Main-shaft must be horizontal.
- Centerline of the spool assembly must be in line with the hose pull out.
- When mounted overhead in base up position, add a secondary chain, bracket or other safety device to prevent reel from falling in case mounting bolts are removed or become loosened from vibration.

## **SUPPLY HOSE**

Assemble supply hose to main shaft. **Do not** use rigid pipe at input connection. Use Teflon tape or pipe sealant to reel hose fitting threads

**NOTE:** To avoid damage to the swivel, use a wrench to support the swivel fitting while tightening the hose.

## **SERVICE**



**WARNING:** Before performing any service, always disconnect and lock out compressed air or fluid before attempting any service. Hazards or unsafe practices **COULD** result in severe personal injury or death.

## **HOSE INSTALLATION AND REPLACEMENT**

Apply Teflon tape or pipe sealant to reel hose fitting threads. Insert hose through flange, connect to outlet elbow and tighten.

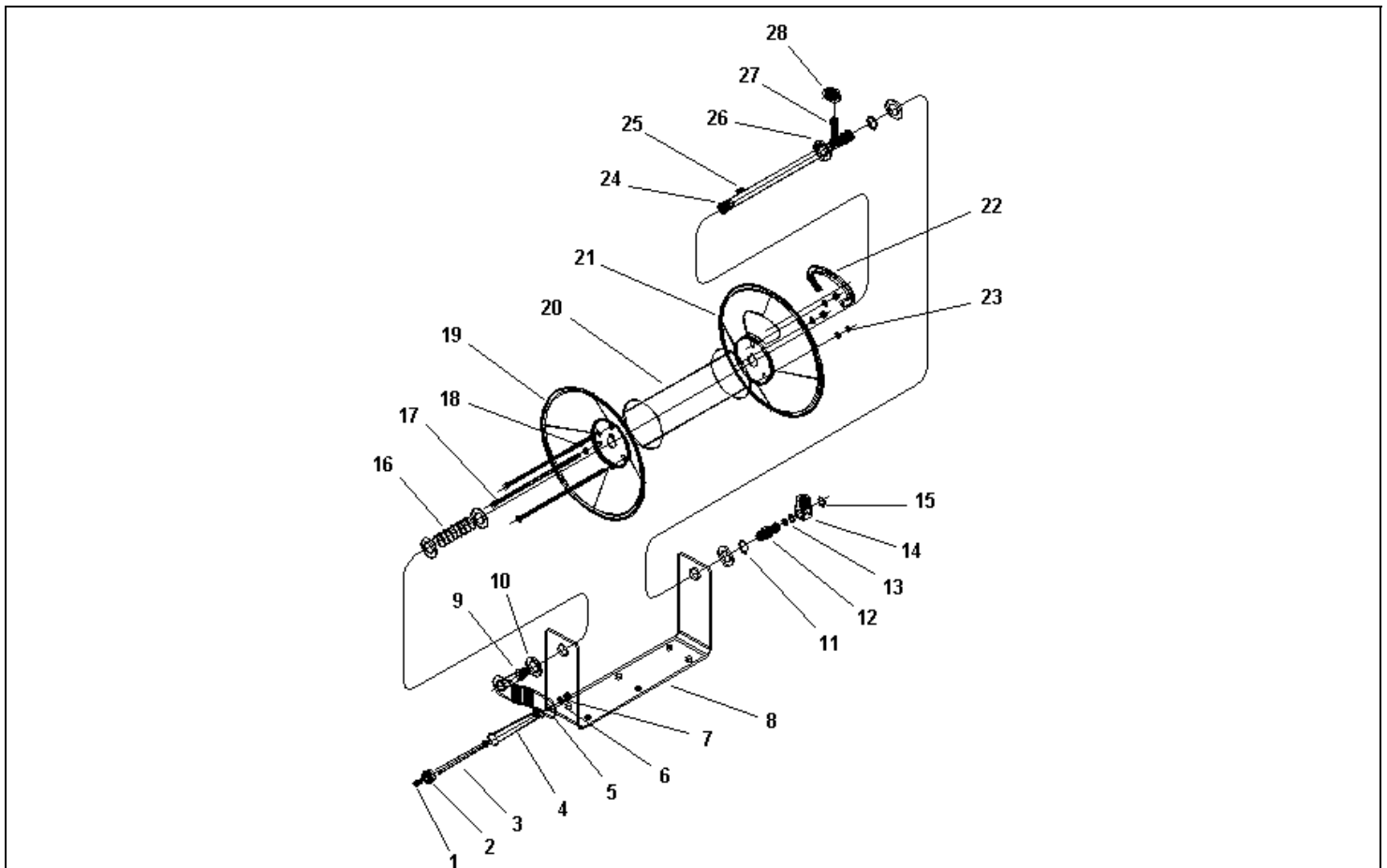
## O-RING REPLACEMENT

**NOTE:** Swivel only sold as complete assembly. If o-rings are leaking, complete swivel must be replaced.  
You may test for leaks using soapy water.

To replace swivel:

- Disconnect supply hose to swivel
- Remove swivel by loosening its hex end
- Reverse above procedure and install new swivel (use Teflon tape or thread sealant on connections)

## REPLACEMENT PARTS



**NOTE:** The CL and CH series reels have common wearing components available as replacement parts. If the part you need is not found on this list, a new reel is your best alternative.

Reference Number	Part Number	Qty.	Description
11,12,13,14, 15	H72320062	1	Swivel Assembly for CLXX2
	H72320046		Swivel Assembly for CLXX3
	H72320025		Swivel Assembly for CHXX2
	H72320035		Swivel Assembly for CHXX3

<p><b>Aero-Motive Company</b>  <b>W</b> A Woodhead Industries Inc. Subsidiary            PO Box 2678            Kalamazoo, MI 49003-2678            (616) 337 7700            (800) 999 8559            FAX: (800) 333 6119            www.aeromotive.com</p>	<p><b>AKAPP Electro Industrie</b>  <b>W</b> A Woodhead Industries Inc. Subsidiary            Nijverheidsweg 14 Box 54            NL-3771 ME Barneveld            NL-3771 AB Barneveld            Holland            (31) 34 241 4022            FAX: (31) 34 249 2384            www.akapp.com</p>	<p><b>Woodhead Connectivity LTD.</b>  <b>W</b> A Woodhead Industries Inc. Subsidiary            Factory No. 9            Rassau Industrial Estate            Ebbw Vale Gwent NP3 5SD            United Kingdom            (0495) 35 0436            FAX: (0495) 35 0877            sales@wdhd.co.uk</p>	<p><b>Woodhead Asia PTE LTD.</b>  <b>W</b> A Woodhead Industries Inc. Subsidiary            401 Commonwealth Drive #04-04            Haw Par Technocentre            Singapore 0314            (65) 261 6533            FAX: (65) 479 3588            sales@wasia.com.sg</p>	<p><b>Woodhead Canada LTD.</b>  <b>W</b> A Woodhead Industries Inc. Subsidiary            1090 Brevik Place            Mississauga Ontario            L4W 3Y5 Canada            (905) 624-6518            FAX: (905) 624-9151            www.woodhead.ca</p>
---	--	---	--	--