

Hose Reel D8140, D8160, T8120, T8130, T8140, T8230, T8240 Series Service Manual

AERO-MOTIVE COMPANY



A Woodhead Industries, Inc. Subsidiary

Safety

Please read this manual carefully and follow its instructions. Improper use or failure to follow these instructions could result in serious injury, death or property damage. Operators should be instructed in the safe and proper use and maintenance of this product. Keep this manual for future reference.

The following safety precautions call attention to potentially dangerous conditions.

- | | |
|--|--|
| | WARNING: Warnings are used when hazards exist which could result in serious injury, death or property damage if proper precautions are not taken. |
| | CAUTION: Cautions are used as reminders of safety hazards which could result in personal injury or property damage if proper precautions are not taken. |

Installation

- | | |
|--|--|
| | CAUTION: Instruct operators in the safe, proper use and maintenance. Keep this manual for future reference. |
| | WARNING: Failure to read, understand, and follow these instructions may result in personal injury or death. |

Mounting

Some reels come complete with hose and are set at proper tension, ready to install. Reels can be mounted in any position--either base up, base down, wall mounted, or any position which allows the main shaft to be horizontal. Reel should be mounted with centerline of drum in line with hose run. Mount reel on level surface.

Input connections

Supply input is threaded into end of main shaft (15). Rigid pipe should not be used at input.

Output connections

Insert hose between drum flanges (6) and through slot in flange. Then connect hose to fitting on swivel (1). Now wind hose onto reel leaving free end of hose unconnected. Reel should be pretensioned before connecting free end of reel.

Secondary safety cable

- | | |
|--|--|
| | WARNING: It is strongly recommended that a secondary safety cable or chain be attached to all reels mounted overhead to prevent reel from falling.
Safety chain should be secured to a structure other than which supports the reel. |
|--|--|

Operation

Spring tension

NOTE: Adjust tension before or after installation of reel.

Important: Do not connect working end of hose until the reel is properly pretensioned.

Before making final connections of hose (34) and placing hose through roller guide, pretension reel by pulling hose out far enough to allow one full wrap of hose to be wrapped back around spool. Hold spool from turning and place hose back on reel.

Repeat until desired tension is set. After tension is set, place hose through roller guide and pull hose out completely to be sure enough spring travel remains for full extension.

- | | |
|--|---|
| | CAUTION: Failure to test in this manner can cause spring damage. |
|--|---|

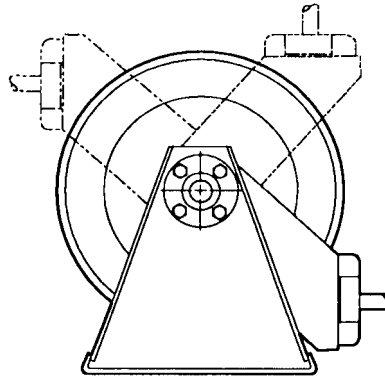
Ratchet lock

All models are built with a four position ratchet lock which engages when hose is pulled out to locking position. When engaged, spring tension is locked at desired position, preventing hose from retracting. To disengage ratchet lock, pull hose out a short distance and allow hose to retract. For constant tension--no ratchet lock--remove spring (21) and ratchet pawl (22).

Hose guide

Proper guide adjustment--to allow hose to be pulled from reel in a straight line--provides maximum hose life. To adjust guide arm, remove screws (18) and rotate. See diagram for proper positioning.

- 00134.BMP -



Guide Mounting Positions

Service

CAUTION: Before attempting any service, always cut off all supply input and remove all tension from main spring.

Hose replacement

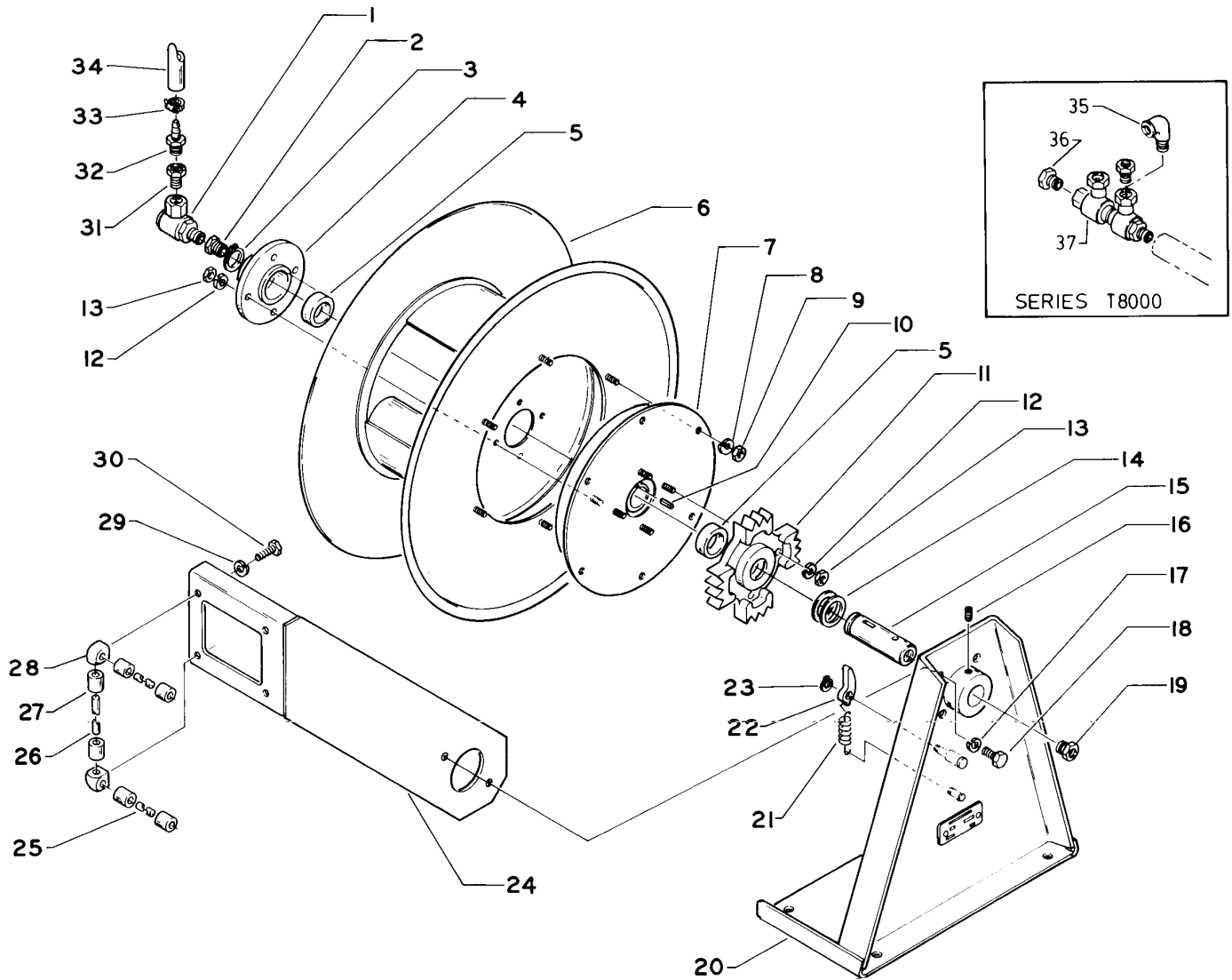
1. To replace hose, pull hose out far enough to engage ratchet lock and engage lock.
2. Hose can easily be removed from swivel assembly (1).
3. When replacing hose, be sure all fittings are tight and hose clamp is firmly in place.
4. Wind new hose on drum of reel in the same manner as the old hose was before removing.

Main spring cup and ratchet assembly replacement

1. Remove set screw (16) and remove spool assembly complete with hose from stand.
2. Remove ratchet (11) by removing the four nuts (13) and washers.
3. Remove nuts (9) and washers (8) from main spring assembly (7). Remove main spring and hub assembly from drum and replace with new main spring assembly. Do not ever attempt to remove main spring cover from main spring assembly.
4. Reverse above to re-assemble. Be sure key is located in spring hub and shaft. Also, place "LockTight" on set screw (16) when replacing in hub of frame. The main spring is completely containerized and safe to handle.

WARNING: Never, under any circumstances, remove the spring from its spring pocket assembly. Replacement springs are assembled in a sealed assembly for safety and there is no need to remove them. Serious injury or death could result from removal of spring from its cartridge.

Replacement Parts



- 00135.BMP -

Reference Number	Part Number	Qty.	Description
1 *	C35920011	1	Swing joint -- D8x4x, D8x2x, D8x3x
	C35920012	1	Swing joint -- D8x6x
2	00669P0025	1	Bushing -- not required on D8x6x
	C32410417	1	Bushing -- T8120
	C32410417	2	Bushing -- T8130, T8230
3	00669P0025	1	Bushing -- T8140, T8240
	00576P0020	1	Retaining ring
4	M75120001	1	Collar
5 *	C52410002	2	Bearing
	H42330001	1	Flange and drum assembly -- D81xx
7 *	H42330002	1	Flange and drum assembly -- D82xx
	H41710001	1	Spring and hub assembly - D81xx
	H41710002	1	Spring and hub assembly -- D82xx
8	C01200216	6	Lock washer #10 internal tooth
9	00151P0025	6	Nut, hex #10-24

10	4077300006	1	Key
11	M67620004	1	Ratchet
12	C01200218	8	Lock washer 1/4 internal tooth
13	C22020310	8	Nut, hex 1/4-20
14	4011900000	A/R	Spacer
15	M37760174	1	Main shaft
16	C04100439	1	Set screw
17	T027050761	2	Lock washer 3/8 internal tooth
18	C11000259	2	Screw, hex head 3/8-16x1/2
19	00669P0025	1	Bushing -- D8x4x
	C32410418	1	Bushing -- D8x2x
	C32410417	1	Bushing -- D8x3x
	C32410418	1	Bushing -- T8120
	00669P0025	1	Bushing -- T8140, T8240
20	H22110003	1	Frame -- D81xx
	H22110002	1	Frame -- D82xx
21 *	5385600000	1	Spring
22 *	M67710006	1	Ratchet pawl
23 *	C01700229	1	Retaining ring
24	H25410002	1	Guide arm -- D81xx
	H25410001	1	Guide arm -- D82xx
25	T051223794	2	Roller rod
26	T027223794	2	Roller rod
27	T001222390	12	Roller
28	T001221980	4	Roller mounting bracket
29	C01130220	4	Lock washer
30	00032P0101	4	Screw
31	00669P0010	1	Bushing -- D8x2x
	00669P0042	1	Bushing -- D8x3x
32	00658P0030	2	Barb fitting -- D8x4x
	00658P0040	2	Barb fitting -- D8x6x
	00658P0005	2	Barb fitting -- D8x2x
	00658P0035	2	Barb fitting -- D8x3x
33	01222P0045	2	Clamp -- D8x4x
	C39860113	2	Clamp -- D8x6x
	01222P0044	2	Clamp -- D8x2x
	01222P0046	2	Clamp -- D8x3x
34	9999902205	A/R **	Hose 1/2 -- D8x4x
	R80820128	A/R **	Hose 3/4 -- D8x6x
	9999902202	A/R **	Hose 1/4 -- D8x2x
	9999902204	A/R **	Hose 3/8 -- D8x3x
35	00675P0006	2	90° elbow -- T8140, T8240
36	00669P0069	3	Bushing -- T8120 only
37	H72410001	1	Swivel assembly -- T8120, T8130, T8230
	H72410002	1	Swivel assembly -- T8140, T8240

* Recommended spare parts

** Last digit of model indicates length of hose D8xx2 = 20 feet

Aero-Motive Company

W A Woodhead Industries Inc. Subsidiary
 PO Box 2678
 Kalamazoo, MI 49003-2678
 (616) 337 7700
 (800) 999 8559
 FAX: (800) 333 6119
 www.aeromotive.com

AKAPP Electro Industrie

W A Woodhead Industries Inc. Subsidiary
 Nijverheidsweg 14 Box 54
 NL-3771 ME Barneveld
 NL-3771 AB Barneveld
 Holland
 (31) 34 241 4022
 FAX: (31) 34 249 2384
 www.akapp.com

Woodhead Connectivity LTD.

W A Woodhead Industries Inc. Subsidiary
 Factory No. 9
 Rassau Industrial Estate
 Ebbw Vale Gwent NP3 5SD
 United Kingdom
 (0495) 35 0436
 FAX: (0495) 35 0877
 sales@wdhd.co.uk

Woodhead Asia PTE LTD.

W A Woodhead Industries Inc. Subsidiary
 401 Commonwealth Drive #04-04
 Haw Par Technocentre
 Singapore 0314
 (65) 261 6533
 FAX: (65) 479 3588
 sales@wasia.com.sg

Woodhead Canada LTD.

W A Woodhead Industries Inc. Subsidiary
 1090 Brevik Place
 Mississauga Ontario
 L4W 3Y5 Canada
 (905) 624-6518
 FAX: (905) 624-9151
 www.woodhead.ca