

**Aero-Motive Company**

**W** A Woodhead Industries, Inc. Subsidiary

**Important Safety Instructions**

Please read this manual carefully and follow its instructions. Improper use or failure to follow these instructions could result in serious injury, death or property damage. Operators should be instructed in the safe and proper use and maintenance of this product. Keep this manual for future reference.

The following safety precautions call attention to potentially dangerous conditions.

**! DANGER:** Immediate hazards which **WILL** result in severe personal injury or death.

**! WARNING:** Hazards or unsafe practices which **COULD** result in severe personal injury or death.

**! CAUTION:** Hazards or unsafe practices which **MAY** result in *minor* personal injury or product or property damage.

**! WARNING:** Failure to read, understand or follow these instructions could lead to hazards or unsafe practices **COULD** result in severe personal injury or death.

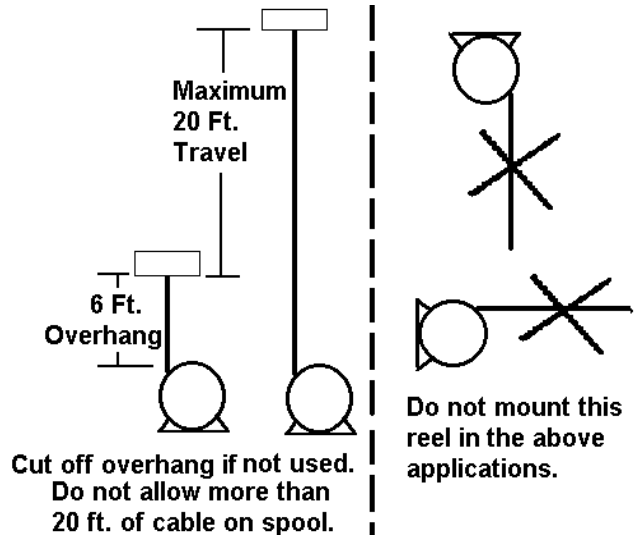
**! CAUTION:** Instruct operators in the safe, proper use and maintenance of this product. Hazards or unsafe practices **MAY** result in *minor* personal injury or product or property damage.

**MOUNTING**

**NOTE:** Reel is only intended for a vertical recovery application maximum 20ft retraction on reel. 6ft extra comes with reel for hookup for a total of 26ft. If the hook up is not used, cut it off since reel will be too full if more than 20 ft is on spool.

Mainshaft must be mounted horizontal. Use mounting bracket as a template for location of the mounting holes

**NOTE:** Reel is rated for maximum 4 amps at 125VAC or 24VDC.



**WIRING**

When making electrical connections, be sure color coding coincides on lead-in and working cables.

**! CAUTION:** The green wire is not grounded to the frame of the reel. Hazards or unsafe practices **MAY** result in *minor* personal injury or product or property damage.

## ADJUSTMENT


### TENSION ADJUSTMENT

 **CAUTION:** To prevent spring damage test for proper spring revolutions. Hazards or unsafe practices **MAY** result in *minor* personal injury or product or property damage.

**NOTE:** Tension adjustment can be performed before or after installation of reel & can be adjusted after all electrical connections are made. Apply a minimum of 3 setup turns.

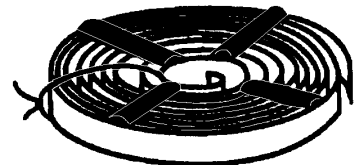
To adjust tension, hold main shaft by placing a wrench on flats provided on protruding end of shaft. Pull out on lock pin knob and turn shaft with wrench clockwise to increase tension or counterclockwise to decrease tension. After adjusting tension, carefully pull cable all the way out to be sure spring does not bottom out before cable is fully extended. Remove turns

## SERVICE

 **WARNING:** Disconnect ALL electrical power before dismantling any part of the reel. Remove all spring tension before attempting any service. Secure broken spring by welding or wire wrapping in four (4) locations (equally spaced). Hazards or unsafe practices **COULD** result in severe personal injury or death.

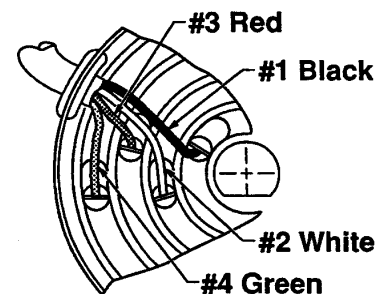
### MAIN SPRING REPLACEMENT

Remove screw from main shaft & complete cover. Remove retaining ring and pull tension pin out, then slide complete drum assembly and shaft from side plate. Remove spacer from shaft and remove shaft. Remove nuts from cover then remove cover. Carefully remove main spring from spool. Replace new main spring in drum. Be sure spring hooks engage on lip of drum and slot in shaft. Reverse the above procedure to reassemble.



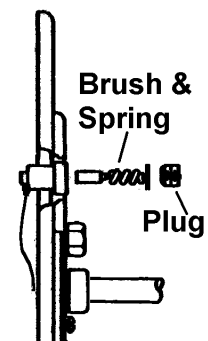
### WORKING CABLE REPLACEMENT

Follow the procedure as outlined previously in SERVICE. Carefully slide slip ring assembly out of drum and disconnect wires from slip ring ass'y. Remove cable clamp then remove cable with grommet. Slide cable out through cable guide from housing. Replace old cable with new cable and reassemble by reversing the above procedure.



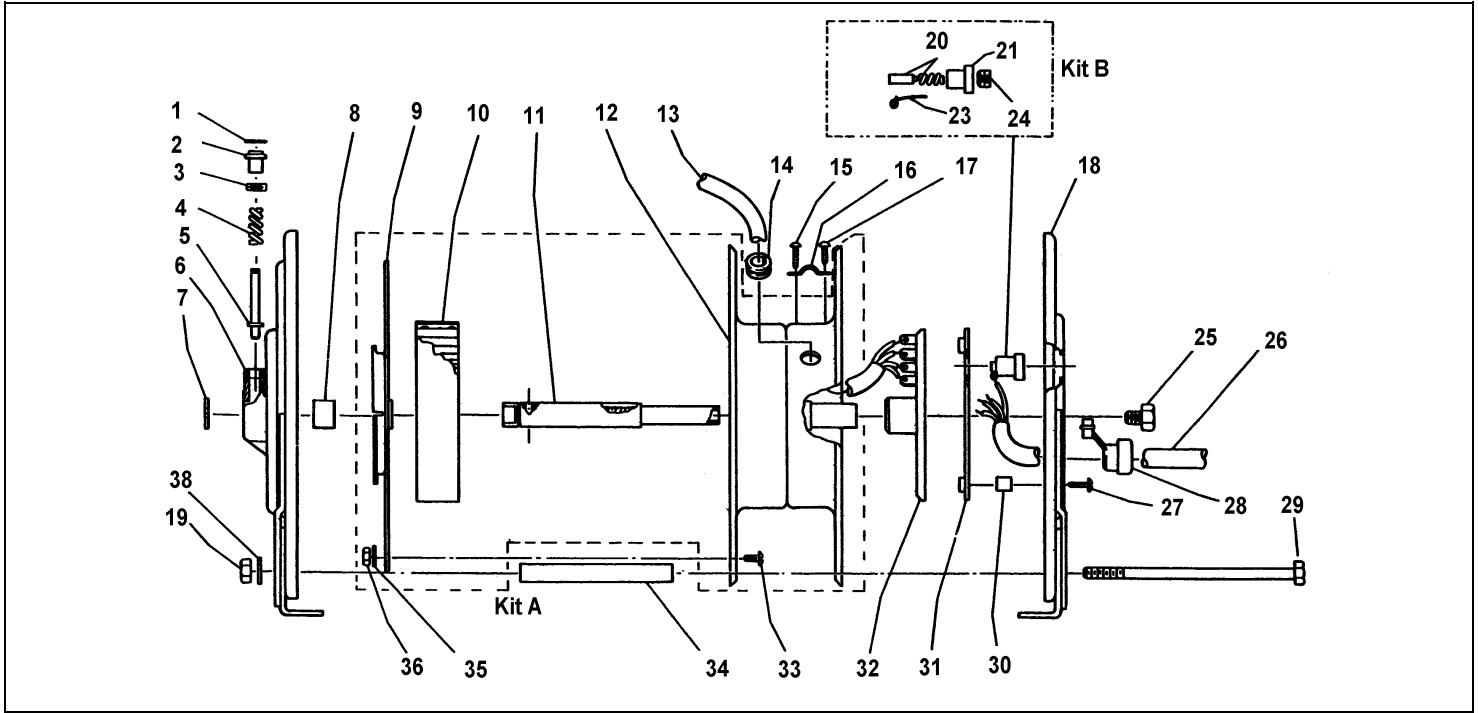
### BRUSH REPLACEMENT

Use flat head screwdriver to remove plug. Pull out brush and replace. To assure brush freely moves in holder, remove 3 hex bolts on the brush holder side plate. Then remove plate and check brushes. Reverse procedure to assemble.



 **WARNING:** Check reel for proper continuity, polarity and grounding before connecting power. Hazards or unsafe practices **COULD** result in severe personal injury or death.

# REPLACEMENT PARTS



Ref. Number	Part Number	Qty.	Description
1	00580P0020	1	Retaining Ring
2	0207800000	1	Knob
3	0207600000	1	Spring Retainer
4	0207500000	1	Spring
5	0207700000	1	Lock Pin
6	5537700003	1	Cover Ass'y ( Items 1-5)
7	00580P0050	2	Retaining Ring
8	3127400000	1	Spacer Bushing
9	0208500000	1	Spring Cover
10*	0208000176	1	Mainspring
11	0207400000	1	Mainshaft
12	5442800000	1	Drum Assembly
13	4955600000	1	Working Cable
14	00701P0010	1	Grommet
15	00002P0202	1	Screw (#6-32 x 1/2)
16	0004800000	1	Cable Clamp
17	00002P0204	1	Screw ( #6-32 x 3/8)
18	5537700002	2	Back Cover Plate
19	00151P0020	4	Nut (1/4-20)
20*	6133100000	4	Brush, Spring, & Shunt
21*	01223P0001	4	Brush Holder
23*	01225P0001	4	Wire Clip
24*	01224P0002	4	Brush Cap
25	0207100000	1	Screw, Front Cover
26	5442300000	1	Lead-in Cable
27	00002P0102	4	Screw (#8-32 x 7/16)
28	00916P0003	1	Cable Strain Relief
29	5537700008	2	Hex Hd Bolt (1/4-20 x 4.25)
30	5443400000	4	Spacer
31	5442000000	1	Brush Holder Bracket
32	5442100000	1	Slip Ring Assembly
33	00002P0101	4	Screw ( #8-32 x 5/16)
34	5443700000	2	Spacer
35	00103P0035	4	Lockwasher (#8)
36	00151P0085	4	Nut (#8-32)
38	00101P0030	2	Lockwasher (1/4)
Kit A	5441200000	1	Drum Kit (9-12, 33,35,36)
Kit B	5624300000	1	Brush Kit (20-24)

## \* Recommended Spares

### Aero-Motive Company

**W** A Woodhead Industries Inc. Subsidiary  
 PO Box 2678  
 Kalamazoo, MI 49003-2678  
 USA  
 (269) 337 7700 / (800) 999 8559  
 FAX: (800) 333 6119  
 www.aeromotive.com  
 techhelp@aeromotive.com

### Woodhead Connectivity LTD.

**W** A Woodhead Industries Inc. Subsidiary  
 Factory No. 9  
 Rassau Industrial Estate  
 Ebbw Vale Gwent NP23 5SD  
 United Kingdom  
 44-1495-356300  
 FAX: 44-1495-356301  
 sales@wdhd.co.uk

### Woodhead Asia PTE LTD.

**W** A Woodhead Industries Inc. Subsidiary  
 No. 4 Toh Tuck Link  
 Level 3 Mezzanine  
 Markono Logistics Bldg.  
 Singapore 596226  
 65-6-261-6533  
 FAX: 65-6-261-3588  
[sales@wasia.com.sg](mailto:sales@wasia.com.sg)

### Woodhead Canada LTD.

**W** A Woodhead Industries Inc. Subsidiary  
 1090 Brevik Place  
 Mississauga Ontario  
 L4W 3Y5 Canada  
 (905) 624-1079  
 FAX: (905) 624-9151  
[www.woodhead.ca](http://www.woodhead.ca)