

AERO-MOTIVE COMPANY



A Woodhead Industries, Inc. Subsidiary

IMPORTANT SAFETY INSTRUCTIONS

Please read this manual carefully and follow its instructions. Improper use or failure to follow these instructions could result in serious injury, death or property damage. Operators should be instructed in the safe and proper use and maintenance of this product. Keep this manual for future reference.

The following safety precautions call attention to potentially dangerous conditions.



DANGER: Immediate hazards which **WILL** result in severe personal injury or death.



WARNING: Hazards or unsafe practices which **COULD** result in severe personal injury or death.



CAUTION: Hazards or unsafe practices which **MAY** result in *minor* personal injury or product or property damage.

NOTE: Instruct operators in the safe, proper use and maintenance. Keep this manual for future reference.

INSTALLATION



WARNING: Failure to read, understand or follow these instructions could lead to hazards or unsafe practices **COULD** result in severe personal injury or death.



CAUTION: Instruct operators in the safe, proper use and maintenance of this product. Hazards or unsafe practices **MAY** result in *minor* personal injury or product or property damage.

MOUNTING

Reel may be mounted in any position as long as main shaft is horizontal. If possible, mount reel within two feet of an electrical outlet. For location of more than two feet, use a three-conductor extension cord, with wire size equal to or larger than what is on the reel. Use mounting bracket as a template for location of the 1/4" screw holes. Measuring from centers of screw holes, template dimensions are 3-11/16" by 7/8".

SECONDARY SUPPORT CHAIN



DANGER: Secondary safety cable or chain is to be attached to all products mounted overhead to prevent reel from falling. Immediate hazards **WILL** result in severe personal injury or death.

A hole is provided at base of reel to permit installation of a secondary support chain. All reels mounted over head should have a secondary support chain to protect personnel in case of structure or mounting component failure. Attach one end of secondary support chain or cable to secondary support point on reel. Attach other end of secondary support chain or cable to a support component other than that which supports reel. The chain or cable should be as short as possible allowing reel to drop no more than 6 to 12 inches if primary connection is released. A secondary support is offered as an accessory item.

WIRING



WARNING: On all models, green wire is grounded to the frame of reel and cannot be used as a power conductor. Hazards or unsafe practices **COULD** result in severe personal injury or death.

All internal wiring has been completed at the factory. Models equipped with a handle and bulb guard are completely wired and ready for installation.

OPTIONAL AUTOMATIC SWITCH

When cable is retracted into reel, ball stop will trigger switch to shut off power. To install, remove screws from cable guide, place switch over guide, and replace screws. Plug cord from reel into switch, and then plug cord from switch into power source.

ADJUSTMENT

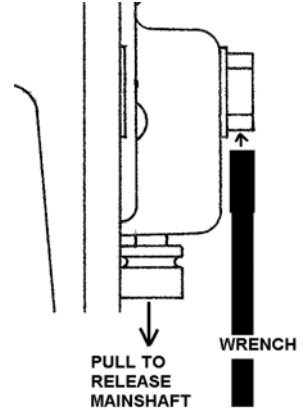
TENSION ADJUSTMENT



WARNING: Failure to test, that enough spring revolutions remain for operation can cause spring damage. Hazards or unsafe practices **COULD** result in severe personal injury or death.

NOTE: Adjust tension before or after installation of reel.

Pull cable out to determine if more or less tension is desired. Place wrench on the end of main shaft over flat. While holding wrench firmly, pull pin on housing until it allows shaft to rotate. Pull out on the lock pin knob and turn shaft with wrench counter-clockwise to decrease tension and clockwise to increase tension. Re-engage pin when desired tension has been set. Pull cable out completely to insure enough spring revolutions remain for operating, but making sure not to bottom out the spring before cable is fully extended. If entire cable assembly cannot be pulled out, decrease spring tension until it can. Should have a minimum 2-3 pretension turns for best spring life.



RATCHET LOCK

The ratchet lock engages in three positions for each complete revolution of the drum. Pull cable to desired location, and then let cable retract slightly until lock engages, much like a window shade. To decrease lock, pull cable out slightly.

OVERHANG

Slide ball stop along cable until light hangs at desired length when cord is fully retracted.

SERVICE



WARNING: Always disconnect ALL electrical power before servicing or dismantling any part of the reel. Fuse size must not be greater than maximum amperage capacity of cable. Hazards or unsafe practices **COULD** result in severe personal injury or death.



CAUTION: Check continuity before reconnecting power. Hazards or unsafe practices **MAY** result in *minor* personal injury or product or property damage.



WARNING: Remove all spring tension before attempting any service. Secure broken spring by welding or wire wrapping in four (4) locations (equally spaced). Hazards or unsafe practices **COULD** result in severe personal injury or death.

SPRING REPLACEMENT

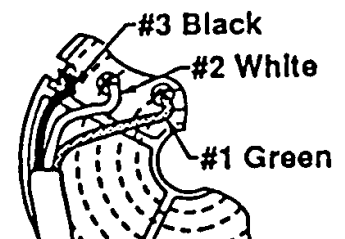
Remove ALL tension, if spring is not already broken. Remove screw from main shaft & complete cover. Remove retaining ring and pull tension pin out, then slide complete drum assembly and shaft out of housing. Remove shaft, slip ring and cable from spool assembly. Spring is containerized in drum, and should not be removed. Reinstall shaft, cable, and slip ring on new spool assembly. Be sure shaft engages hook on spring when reassembling. To assure longest spring life pretensions must be applied to spring before using. See section "Tension Adjustment".

RATCHET LOCK REPLACEMENT

Follow the procedure as outlined in working cable & collector ring replacement (above). Remove retaining ring and unclip spring of ratchet lock from housing. To reassemble, reverse above procedure.

WORKING CABLE & COLLECTOR RING REPLACEMENT

Remove tension and unplug reel. Remove screw from main shaft and remove complete cover. Take off retaining ring and pull down tension pin on side of housing, then slide complete spool and shaft out of main housing. Remove the four screws to slip ring. Pull slip ring assembly out and disconnect wire. Replace slip ring if necessary. Remove spring clip, and if equipped with hand lamp, remove from working cable and slide off ball stop. (See HAND LAMP REPLACEMENT below). Replace old cable with new and reassemble by reversing above procedure.



HAND LAMP REPLACEMENT AND INSTALLATION



WARNING: Disconnect/Unplug all power. Hazards or unsafe practices **COULD** result in severe personal injury or death.

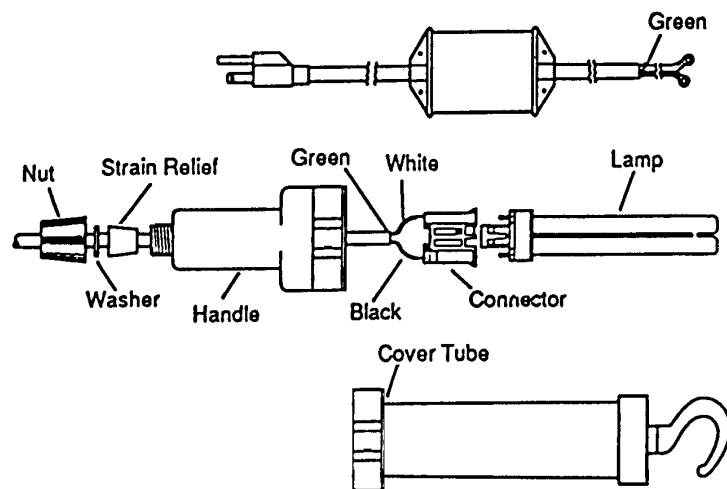


CAUTION: Check continuity before reconnecting power. Hazards or unsafe practices **MAY** result in minor personal injury or product or property damage.

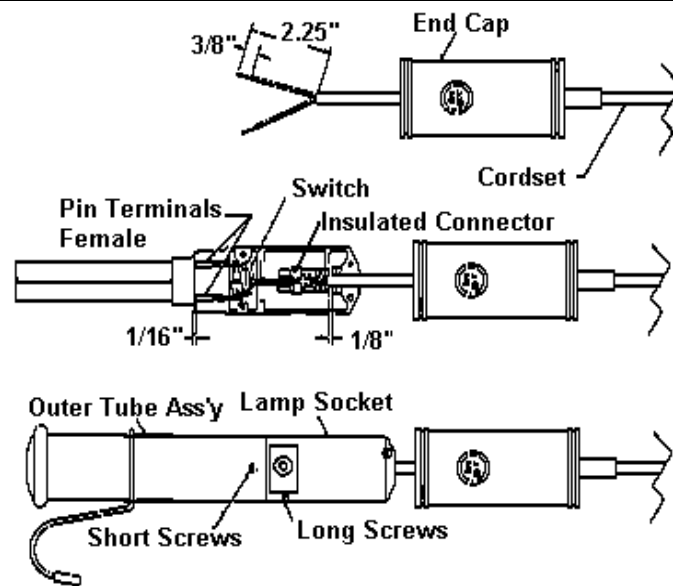
Incandescent: Remove guard and bulb. Remove screws from sides of handle. Remove cable stop assembly, bumper, spring, ball, and cable wiring. Strip wire as needed and wire cable to replacement handle: black to brass screw, white to silver screw, and green to green screw. Reverse the above procedure to reassemble.

Power Cord or Transform Assembly: Remove bolt to open reel cover. Remove the wires that connect the power cord/transformer assembly wires to the brush plate. Attach the lugs on the new cord/transformer assembly wires to the brush assembly. Reassemble the reel.

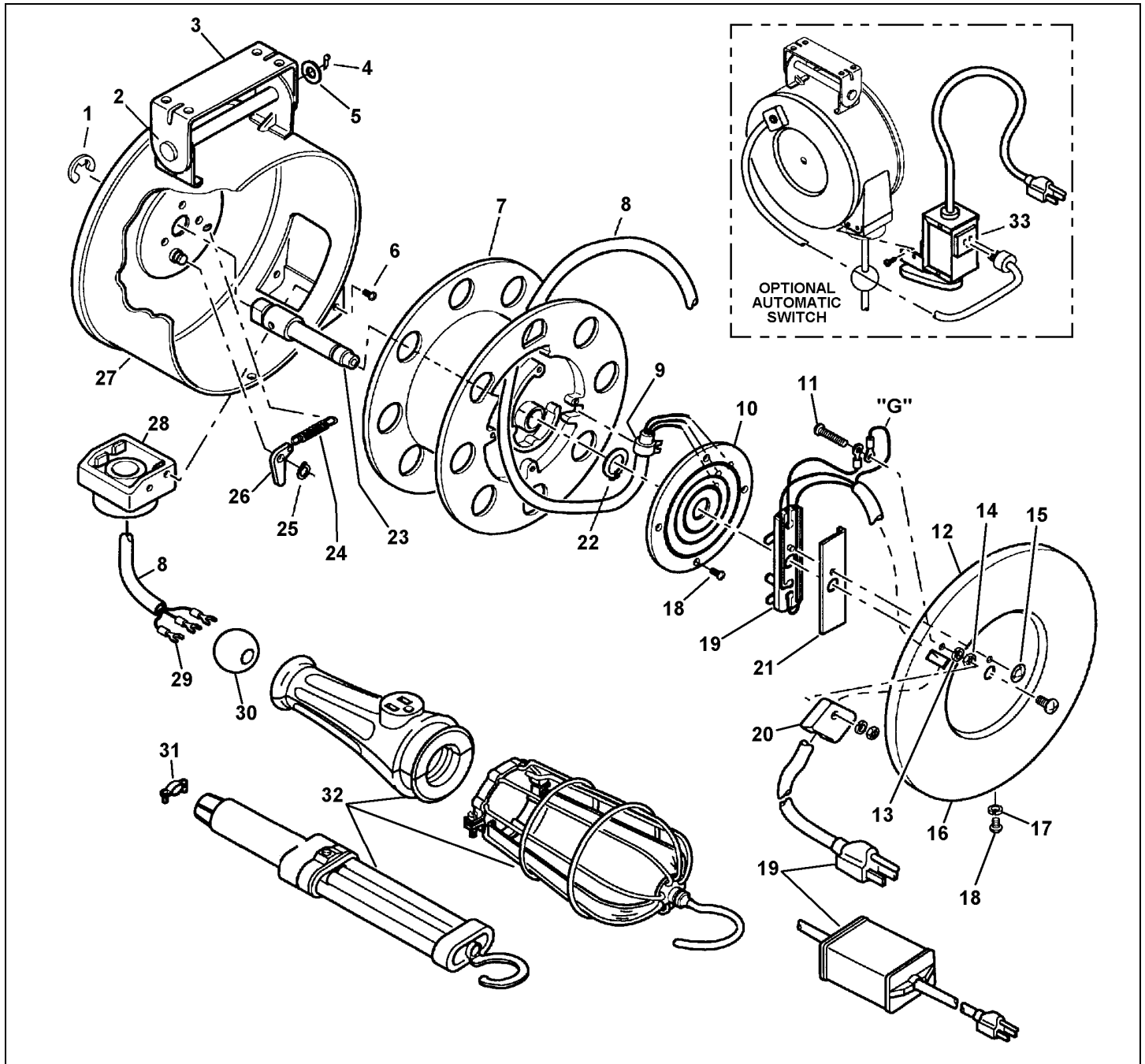
13W Florescent: Disassemble new hand lamp. Strip the black and white wires from the cord and tin ends. Cut and remove the green wire as close to the outer jacket as possible. Press replacement lamp into connector until firmly retained. Push stripped and tinned wire leads into quick-connect wiring holes in bottom of connector. Slide replacement lamp into protective tube so that the end of the lamp is seated in the end of the tube. Slide tube and lamp assembly into the handle while pulling cord until tube and lamp are seated. Secure tube with screws in sides of handle. Replace nut, plastic washer, and rubber strain relief onto lamp handle.



13G Florescent: Disassemble new hand lamp. Strip the black and white wires. Cut and remove the green wire as close to the outer jacket as possible. Pull cable through end cap. Use wire nuts to connect to hand-lamp lead wires. Make sure wire seated properly in the socket base. Use long screws to reassemble socket base. Slide replacement lamp into socket and protective tube over lamp. Use short screws hold on tube. Push end cap all the way on to socket end while pulling cord back through until tube and lamp as necessary.



REPLACEMENT PARTS



Reference Number	Part Number	Qty.	Description
1	C01700131	1	Ring; Retaining (.625 O.D.)
2	020060000	1	Pin
3	02009000YE	1	Bracket; Swivel Mount
4	00288P0010	1	Pin; Cotter
5	C01010222	1	Washer; Flat 3/8"
6	01137P0060	4	Screw; #8 x 3/8" Pan Phil. SF Tap
7	H42310002	1	Assembly; Spool & Main Spring
8	M10720049	1	Cable; Working
	M10720077	1	Cable; Working (RI25-13W, -13G, and 13S)
9	00920P0001	1	Clamp; Spring
10	5773000000	1	Assembly; Collector Ring
11	00002P0418	1	Screw; #10-24 x 3/4" R.D.H.M.
12	M56420002	1	Cover (SR SIDE)
13	00102P0058	2	Washer; Lock #10 (external tooth)
14	00151P0025	2	Nut; #10-24 Jam CAD. PLT.
15	00078P0003	1	Nut; Push On (.156)
16	00005P0110	1	Screw; #10-24 x 1/2" T.R.H.M.
17	00102P0030	1	Washer; Lock #6 (external tooth)
18	01137P0067	5	Screw; #6 x 3/8" Pan Phil. SF Tap
19	6214600000	1	Assembly; Cord (16-3) RI25-3, -H, -M, -FE, -13S)
	Incl. w/ item 32	1	Assembly; Cord (service part) (RI25-13W & 13G)
20	6200400000	1	Relief; Strain
21	6214800000	1	Insulation Strip
22	00576P0039	1	Ring; External Retaining (.05 O.D.)
23	M27320004	1	Shaft; Main
24	5772700000	1	Spring; Ratchet
25	C01700119	1	Ring; Retaining (.312 O.D.)
26	5771800000	1	Lever; Ratchet Lock
27	H22520003	1	Housing (Includes Items: #2,3,4,5,6,25,26,27, & 29)
28	0333900000	1	Guide; Cable
	00047P0001	3	Connector (RI25-3H, -3M)
	00047P0001	2	Connector (-3FE, -3FES)
29	00041P0070	1	Connector (-3FE, -3FES)
	C70090400	2	Connector (-13W, -13WS)
	00047P0001	1	Connector (-13S)
30	5776100000	1	Ball Stop
31	0009500000	1	Clamp (-13W & -13WS)
	C89440002	1	Hand Lamp & Guard (-3H)
	C89440005	1	Hand Lamp & Guard (-3FE & -3FES)
	C89440011	1	Hand Lamp (-3M)
32	13W	1	Fluorescent (-13W)
	H81420038	1	Fluorescent (-13G)
	C89480118	1	Fluorescent (-13S)
	01101P0035	1	Outlet 5-15R (-R)
33	01026P0012	AR	Switch; Optional Automatic

Aero-Motive Company

W A Woodhead Industries Inc. Subsidiary
 PO Box 2678
 Kalamazoo, MI 49003-2678
 USA
 (269) 337 7700 / (800) 999 8559
 FAX: (800) 333 6119
www.aeromotive.com
techhelp@aeromotive.com

Woodhead Connectivity LTD.

W A Woodhead Industries Inc. Subsidiary
 Factory No. 9
 Rassau Industrial Estate
 Ebbw Vale Gwent NP23 5SD
 United Kingdom
 44-1495-356300
 FAX: 44-1495-356301
sales@wdhd.co.uk

Woodhead Asia PTE LTD.

W A Woodhead Industries Inc. Subsidiary
 No. 4 Toh Tuck Link
 Level 3 Mezzanine
 Markono Logistics Bldg.
 Singapore 596226
 65-6-261-6533
 FAX: 65-6-261-3588
sales@wasia.com.sg

Woodhead Canada LTD.

W A Woodhead Industries Inc. Subsidiary
 1090 Brevik Place
 Mississauga Ontario
 L4W 3Y5 Canada
 (905) 624-1079
 FAX: (905) 624-9151
www.woodhead.ca