

Aero-Motive Company

W A Woodhead Industries, Inc. Subsidiary

IMPORTANT SAFETY INSTRUCTIONS

Please read this manual carefully and follow its instructions. Improper use or failure to follow these instructions could result in serious injury, death or property damage. Operators should be instructed in the safe and proper use and maintenance of this product. Keep this manual for future reference.

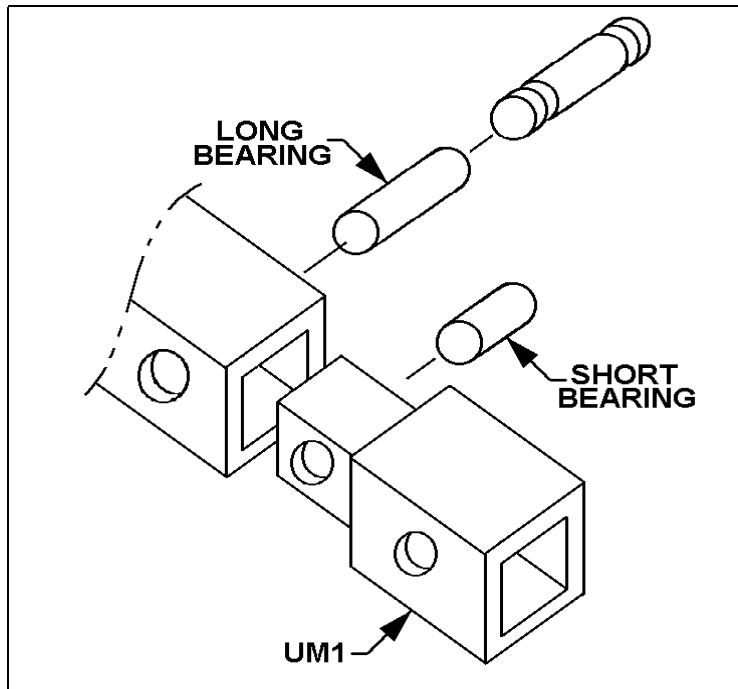
The following safety precautions call attention to potentially dangerous conditions.

! **DANGER:** Immediate hazards which **WILL** result in severe personal injury or death.

! **WARNING:** Hazards or unsafe practices which **COULD** result in severe personal injury or death.

! **CAUTION:** Hazards or unsafe practices which **MAY** result in *minor* personal injury or product or property damage.

If long bearing is in tube, remove pin and bearing from tube. Insert UM1 into tube and put long bearing and pin back through tube. If no bearing is in tube, insert short bearing from kit into hole in UM1. Remove pin from tube and insert UM1 into tube. Replace pin.



Aero-Motive Company

W A Woodhead Industries Inc. Subsidiary
PO Box 2678
Kalamazoo, MI 49003-2678
(616) 337-7700
(800)-999-8559
FAX: (800) 333-6119

AKAPP Electro Industrie

W A Woodhead Industries Inc. Subsidiary
Nijverheidsweg 14 Box 54
NL-3771 ME Barneveld
NL-3771 AB Barneveld
Holland
011-31-3420-14022
FAX: 011-31-3420-92384

Aero-Motive (UK) Limited

W A Woodhead Industries Inc. Subsidiary
Rassau Industrial Estate
Ebbw Vale Gwent NP3 5SD
United Kingdom
(0495) 350436
FAX: (0495) 350877

Woodhead Asia PTE LTD

W A Woodhead Industries Inc. Subsidiary
401 Commonwealth Drive #04-04
Haw Par Technocentre
Singapore 0314
(65) 479 6533
FAX: (65) 479 3588

Woodhead Canada LTD.

W A Woodhead Industries Inc. Subsidiary
1090 Brevik Place
Mississauga Ontario
L4W 3Y5 Canada
(905) 624-6518
FAX: (905) 624-9151