

Aero-Motive Company

W A Woodhead Industries, Inc. Subsidiary

IMPORTANT SAFETY INSTRUCTIONS

Please read this manual carefully and follow its instructions. Improper use or failure to follow these instructions could result in serious injury, death or property damage. Operators should be instructed in the safe and proper use and maintenance of this product. Keep this manual for future reference.

The following safety precautions call attention to potentially dangerous conditions.



DANGER: Immediate hazards which **WILL** result in severe personal injury or death.



WARNING: Hazards or unsafe practices which **COULD** result in severe personal injury or death.



CAUTION: Hazards or unsafe practices which **MAY** result in *minor* personal injury or product or property damage.

INSTALLATION

Swivel base may be mounted in any position, which allows the main shaft of the attached reel to be horizontal, and cable line to be perpendicular to the center of the reel.

MOUNTING WITH OR WITHOUT REEL ATTACHED

Mount swivel base by utilizing four bolt holes in the base. Use base as a template for mounting hole pattern.

CONNECTING FITTINGS (ITEMS 31-38 ON PARTS LIST)

Run leads, from swivel base through each individual fitting. Attach each individual fitting to shaft of swivel base. Do all remaining fittings in the same manner for ease of assembly. Mount reel on yoke assembly utilizing the two bolts, lock-washers, and nuts. Then feed lead wires from fitting assembly through shaft or into junction box of the reel. Attach fitting assembly to shaft or junction box of the reel.

ADJUSTMENT



CAUTION: Before wiring, be sure main power supply is turned off and locked out. Fuse protection should also be provided. Hazards or unsafe practices **MAY** result in *minor* personal injury or product or property damage.

INLET

A one-inch NPT opening is provided in the side of the housing for conduit or a watertight cable connector. Remove inspection covers and bolts from top plate. Carefully lift cover with slip ring assembly attached. If bearing comes off with shaft, replace into base. Bring leads of cable, from base, out far enough to reach terminals on brushes. Connect leads to terminals, and replace cover with slip ring assembly into base. Replace inspection covers.



CAUTION: Be sure all wires are completely inside base, and will not interfere with movement of slip ring. Hazards or unsafe practices **MAY** result in *minor* personal injury, product or property damage.



WARNING: To prevent personal injury, death or property damage, (before performing any service), always disconnect and lock out all electrical power. Fuse protection should be provided. Hazards or unsafe practices **COULD** result in severe personal injury or death.

OUTLET

If equipped with junction box, connect leads from swivel base to terminal block inside a junction box. If not equipped with junction box, slide leads through shaft to slip ring on reel and connect leads. Refer to instruction sheet of cable reel for complete wire hook up.

SERVICE



WARNING: To prevent personal injury, death or property damage, and before performing any service, always disconnect and lock out all electrical power. Fuse protection should be provided. Hazards or unsafe practices COULD result in severe personal injury or death.

SLIP RING

Remove inspection covers and disconnect as many lead wires to brush terminals as possible through openings in side of base. Remove bolts and lock-washers, & remove cover with slip ring assembly. If bearing comes off with shaft, remove, and replace back into base. Remove remaining leads connected to terminals on brush assembly. Unclip one end of brush assembly, and tilt outward so brush is removed from groove of slip ring. Continue on all others. Remove retaining ring from end of shaft. To reassemble, reverse above procedure. When replacing brushes onto slip ring, be sure that brushes are centered between insulators, and brush surface is making complete contact with ring. Brush holders should rotate 90 degrees from the preceding brush holder in a circular pattern.

BRUSHES

Remove inspection covers. If brushes can be removed through the side openings, then disconnect leads to terminals, unclip brushes, and remove. If brushes cannot be reached by side openings use procedures outlined in SERVICE; SLIP RING above.

MAINTENANCE

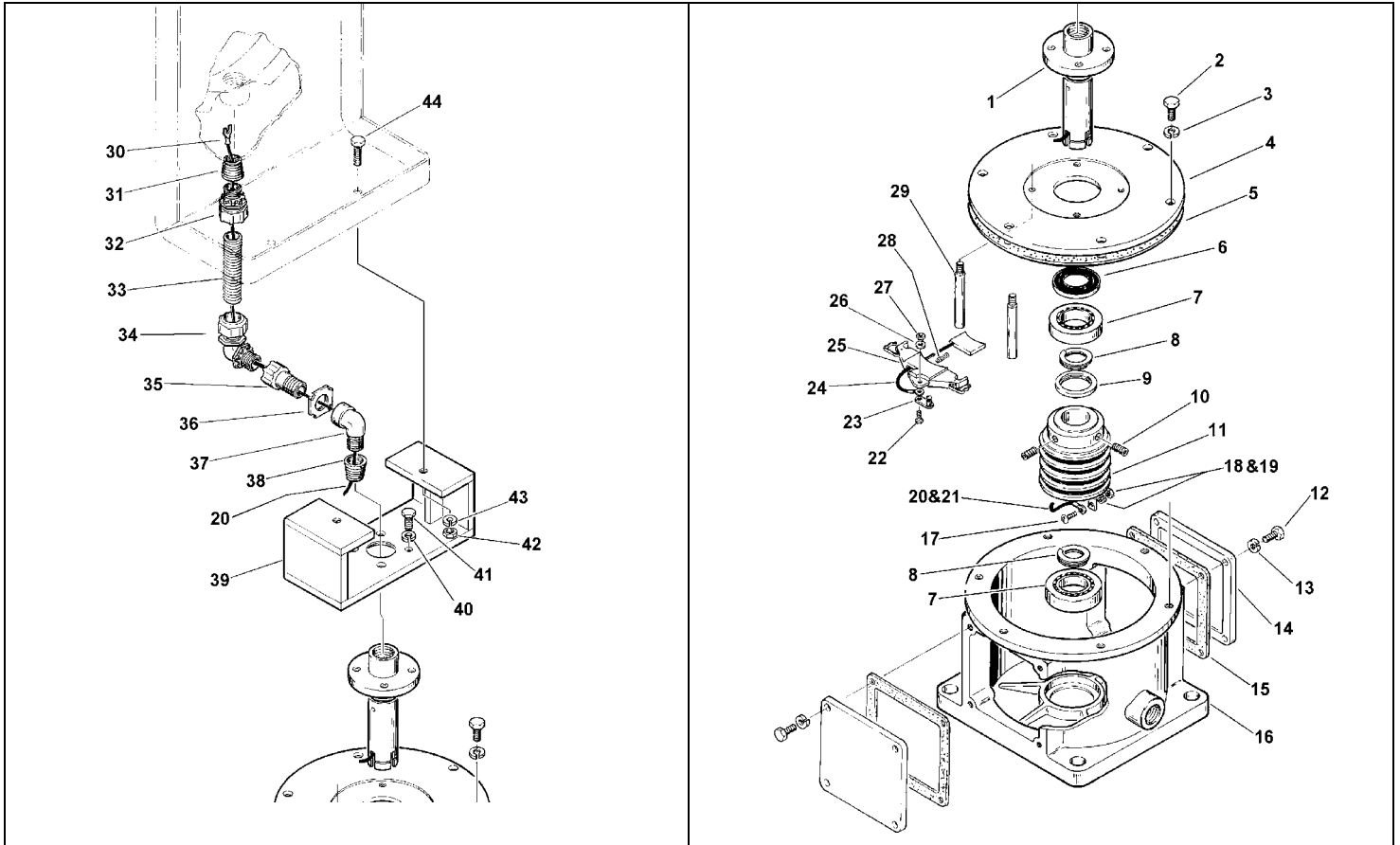
LUBRICATION

All bearings are permanently lubricated, and further lubrications is neither recommended or required

INSPECTION

A periodic inspection should be made to insure proper alignment and contact of brushes to rings.

REPLACEMENT PARTS



Reference Number *	Part Number	Qty.	Description
1	4090900000	1	Assembly; Shaft
2	00031P0005	6	Bolt; 5/16-18 x 3/4"
3	00101P0014	6	Washer; Lock 5/16"
4	5873500001	1	Cover Housing
5	4090700000	1	Gasket
6	00703P0002	1	Seal
7	00376P0025	2	Bearing; 3/8x1" x 7/16 w.
8	00582P0003	2	Ring; External Retaining 1-1/2" Shaft
9	4091900000	1	Collar
10	4068100001	2	Screw; Set
11	H96420234	AR	Assembly; Collector Ring (3 con. @ 35 amp.) (SB33)
	H96420235	AR	Assembly; Collector Ring (4 con. @ 35 amp.) (SB34)
	H96420236	AR	Assembly; Collector Ring (6 con. @ 35 amp.) (SB36)
	H96420237	AR	Assembly; Collector Ring (8 con. @ 35 amp.) (SB38)
	H96420401	AR	Assembly; Collector Ring (3 con. @ 75 amp.) (SB73)
	H96420402	AR	Assembly; Collector Ring (4 con. @ 75 amp.) (SB74)
12	00030P0111	8	Bolt; 1/4-20 x 5/8
13	00101P0030	8	Washer; Lock 1/4"
14	4090300001	2	Cover; Service
15	4090800000	2	Gasket
16	4090100001	1	Housing
17	00030P0120	1 per conductor*	Screw; 1/4-20 x 3/8 (75 amp. only)
18	00101P0030	1 per conductor*	Washer; 1/4" (75 amp. only)
19	00152P0005	1 per conductor*	Nut; 1/4-20 (75 amp. only)
20	00041P0125	1 per conductor*	Terminal; #6 AWG. (75 amp. only)
21	5492500002	1 per conductor*	Wire; 20-7/8" of #6 AWG. (75 amp. only)
22	00030P0217	1	Screw; #10-24 x 5/8 (35 amp.)
	00030P0110	1+	Screw; 1/4-20 x 3/4" (75 amp.)
23	00042P0010	1	Terminal; Lug (35 amp.)
	00042P0020	1+	Terminal; Lug (75 amp.)
24	5850200000	1	Assembly; Brush (35 amp.)
	5850500000	1+	Assembly; Brush (75 amp.)
25	6050600000	1	SUB-Assembly; Brush holder (35 amp.)
	6134500000	1+	SUB-Assembly; Brush holder (75 amp.)
26	5773300000	1	Washer; .128 ID (35 amp.)
	00126P0050	1+	Washer; 1/4" (75 amp.)
27	00160P0050	1	Nut; #10-24 (35 amp.)
	00160P0025	1+	Nut; 1/4-20 (75 amp.)
28	00600P0002	1	Spring (35 amp. and 75 amp.)
29	5851500000	4	Stud; (3 con. @ 35 amp, 4 con. @ 35 amp.)
	5851600000	4+	Stud; (6 con. @ 35 amp, 3 con. @ 75 amp.)
	5851700000	4+	Stud; (8 con. @ 35 amp, 4 con. @ 75 amp.)
30	00041P0040	1 per conductor*	Terminal (#10 & #12 AWG.) (Model Code # A,C,D,E,G)
31	00669P0062	1	Reducer; 3/4-1/2 " N.P.T. (Model Code # A)
	01219P0002	1	Reducer; 1"-1/2 " N.P.T. (Model Code # C,D,E,F,G)
32	00908P0002	1	Connector; 1/2" N.P.T. (Model Code # A, F)
	00907P0001	1	Connector; Elbow 1" N.P.T. (Model Code # C,D,E)
	00908P0004	1	Connector; Elbow 1/2" N.P.T. (Model Code # G)
33	5491800001	1	Conduit (Model Code # A)
	5491800004	1	Conduit (Model Code # C, D, E)
	5491800005	1	Conduit (Model Code # F)
	00909P0005	1	Conduit (Model Code # G)
34	00907P0003	1	Elbow; 1/2" NPT (Model Code # A,F)
	00907P0001	1	Elbow; 1" NPT (Model Code #C,D,E)
35	00673P0002	1*	Extension; 1/2" NPT (Model Code #A)
	00673P0003	1*	Extension; 1" NPT (Model Code #A,F)

36	00155P0010	1*	Lock Nut Conduit ½" NPT (Model Code #A)
	00155P0014	1*	Lock Nut Conduit 1" NPT (Model Code #C,D,E)
37	00739P0001	1*	Elbow; ½" NPT (Model Code #A)
	00739P0002	1*	Elbow; 1" NPT (Model Code #C,D,E)
38	01219P0002	1	Reducer; ½-1" NPT (Model Code #A,F)
	NOT REQ'D		(Model Code #C,D,E,G)
39	4098400000	1	Assembly; Yoke (Model Code #A)
	4091000013	1	Assembly; Yoke (Model Code #C)
	4091000014	1	Assembly; Yoke (Model Code #D)
	4019000015	1	Assembly; Yoke (Model Code #E)
	6295910000	1	Assembly; Yoke (Model Code #F)
40	00101P0014	4	Washer; 5/16" Lock (Model Code #A,C,D,E,F,G)
41	00031P0025	4	Bolt; 5/16-18 X 7/8 (Model Code #A,F)
	00031P0045	4	Bolt; 5/16-18 X 1 (Model Code #C,D,E,G)
42	00160P0060	4	Nut; ½-13" (Model Code #C,D,E,G)
	NOT REQ'D		(Model Code #A)
43	00101P0021	2	Washer; 3/8" Lock (Model Code # A, F)
	NOT REQ'D		(Model Code # C, D, E, G)
44	00032P0101	2	Bolt; 3/8-16 X ¾ (Model Code # A,F)
	00034P0014	4	Bolt; ½-13 X 1½ (Model Code #C, D, E)
	00034P0013	4	Bolt; ½-13 X 1¼ (Model Code #G)
			KITS OPTIONAL
45	H97620007		Assembly; Complete 35 amp. Brush (Includes #22-28)
46	H97620004		Assembly; Complete 75 amp. Brush (Includes #22-28)

*Not Required On Models #0900 & #1000 Reels.

MODEL CODE INDEX

A-FOR 200A & 300A REELS	E-FOR 1160 REELS
C-FOR 1120 REELS	F-FOR 0951 REELS
D-FOR 1140 REELS	G-FOR 1000 REELS

Aero-Motive Company

W A Woodhead Industries Inc. Subsidiary
 PO Box 2678
 Kalamazoo, MI 49003-2678
 (616) 337 7700
 (800) 999 8559
 FAX: (800) 333 6119
 www.aeromotive.com

AKAPP Electro Industrie

W A Woodhead Industries Inc. Subsidiary
 Nijverheidsweg 14 Box 54
 NL-3771 ME Barneveld
 NL-3771 AB Barneveld
 Holland
 (31) 34 241 4022
 FAX: (31) 34 249 2384
 www.akapp.com

Woodhead Connectivity LTD.

W A Woodhead Industries Inc. Subsidiary
 Factory No. 9
 Rassau Industrial Estate
 Ebbw Vale Gwent NP3 5SD
 United Kingdom
 (0495) 35 0436
 FAX: (0495) 35 0877
 sales@wdhd.co.uk

Woodhead Asia PTE LTD.

W A Woodhead Industries Inc. Subsidiary
 401 Commonwealth Drive #04-04
 Haw Par Technocentre
 Singapore 0314
 (65) 261 6533
 FAX: (65) 479 3588
 sales@wasia.com.sg

Woodhead Canada LTD.

W A Woodhead Industries Inc. Subsidiary
 1090 Brevik Place
 Mississauga Ontario
 L4W 3Y5 Canada
 (905) 624-6518
 FAX: (905) 624-9151
 www.woodhead.ca