

STANLEY
helps you do things right

Stanley Hydraulic Tools
Division of The Stanley Works
3810 S.E. Naef Road
Milwaukie, Oregon 97267
Phone: 503/659-5660
Telex: 360771

PARTS LIST



WD175

SPECIFICATIONS

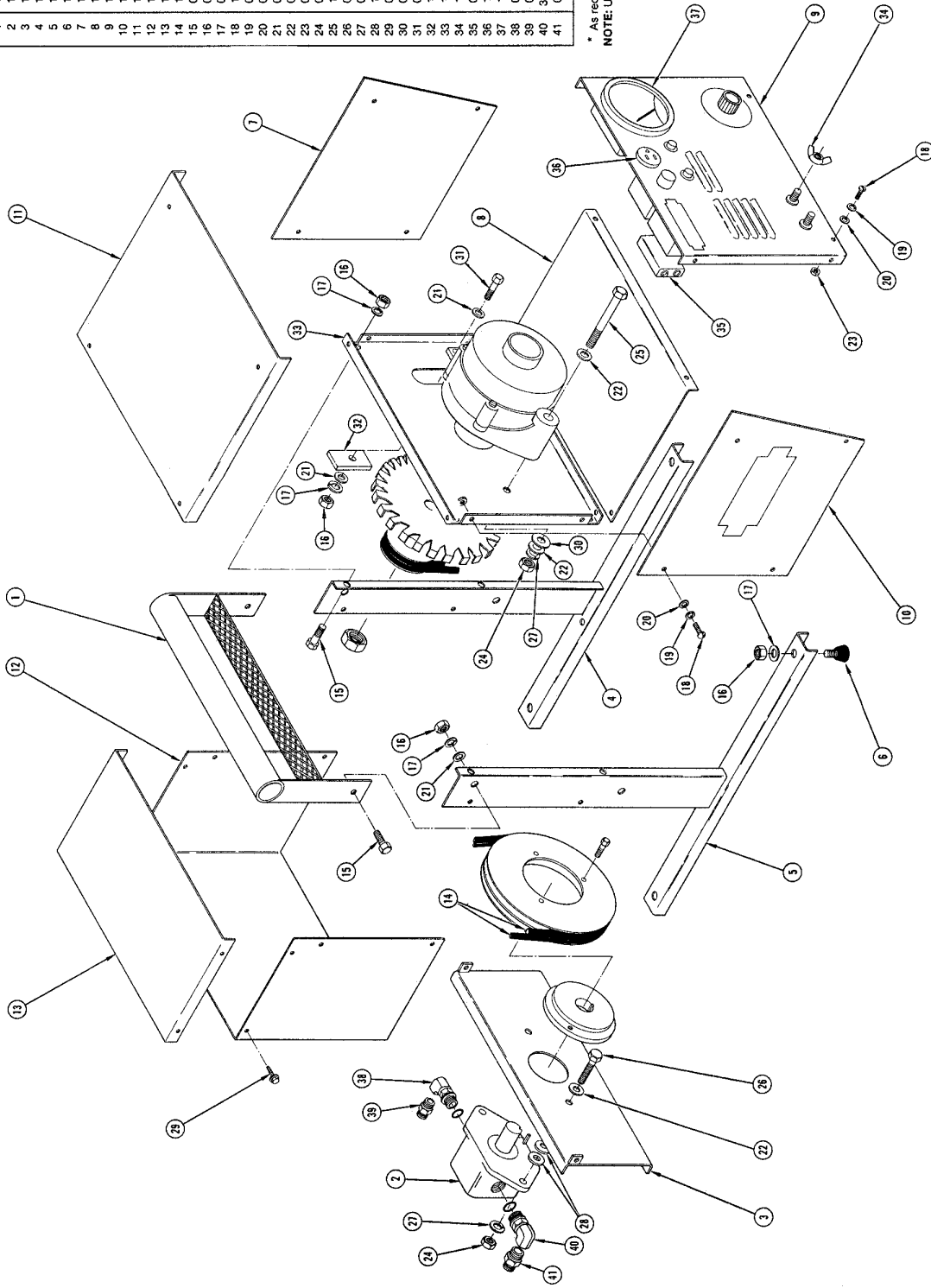
Capacity	715 amperes
Weight	65 lbs/29.4 kg
Pressure Range	1500-2000 psi/105-140 bar
Flow Range	11-13 gpm/41-49 lpm
Optimum Flow	12 gpm/45 lpm
Porting	1/2 Male Pipe
Length	19 in/48.2 cm
Width	12 in/30.4 cm
Height	18 in/45.7 cm

MODEL WD175

WELDER

Item No.	Part No.	Qty.	Description
1	11075	1	Handle Assy
2	11092	1	Motor - Dowty #HM 3036 AFSJB
3	11076	1	Motor Mount
4	11077	1	Right Mount
5	11078	1	Left Mount
6	11094	4	Shock Mount
7	11079	1	Shroud, Right
8	11080	1	Shroud, Bottom
9	11081	1	Welder Unit (includes items 34 thru 37)
10	11082	1	Shroud, Left
11	11083	1	Shroud, Top
12	11084	1	Motor Shroud
13	11085	1	Motor Shroud, Top
14	11095	2	Belt, Gates #Super HC, 3VX300
15	02072	10	Cap Screw, 5/16-18 x 3/4 Hex Head
16	00429	15	Hex Nut, 5/16-18
17	03031	15	Lockwasher, 5/16
18	11085	16	Machine Screw, 10-32 x 1/2 Slotted Rd Hd
19	04420	16	Lockwasher, No. 10
20	03014	16	Flat Washer, No. 10
21	02634	8	Flat Washer, 3/8
22	04585	4	Flat Washer, 3/8
23	06399	2	Hex Nut, No. 10-22
24	00147	1	Hex Nut, 3/8-16
25	11086	3	Cap Screw, 3/8-16 x 3-3/4 Hex Hd
26	03099	2	Cap Screw, 3/8-16 x 1-1/4 Hex Hd
27	01459	3	Lockwasher, 3/8
28	11093	3	Flat Washer, 5/16 Types A wide
29	08667	4	Tapping Screw, No. 12 x 1/2
30	01922	1	Flat Washer, Type A .025x.1375x.109
31	09196	1	Cap Screw, 5/16-18 x 1-3/4 Hex Hd
32	11087	1	Adjustment Spacer
33	11086	1	Alternator Mount
34	11089	2	Wingnut, 1/2-13
35	04424	1	Battery, 9 volt
36	11090	1	Receptacle
37	11091	1	Voltmeter
38	06960	1	90° Elbow, -10SAE, M/1/2 NPT, FEM
39	04192	1	Hex Nipple, 1/2 NPT
40	350207	1	90° Elbow, -12 SAE, M/3/4 NPT, FEM
41	02137	1	Hex Nipple, 1/2 NPT/3/4 NPT

* As required
NOTE: Use part number and part name when ordering.



STANLEY[®]

helps you do things right

Stanley Hydraulic Tools

Division of The Stanley Works
3810 S.E. Naef Road
Milwaukie, Oregon 97267
Phone: 503/659-5660
Telex: 360771