

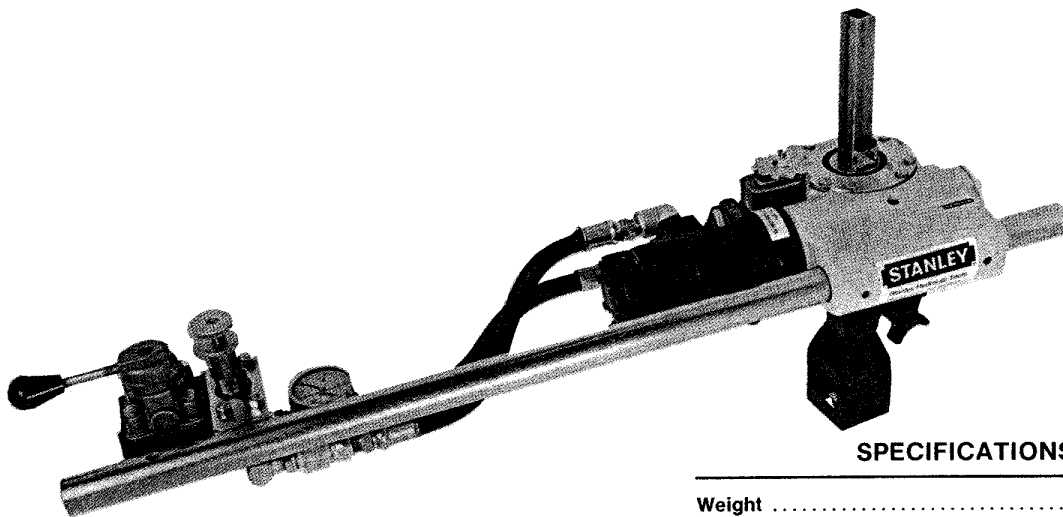
STANLEY

helps you do things right

Stanley Hydraulic Tools

Division of The Stanley Works
3810 S.E. Naef Road
Milwaukie, Oregon 97222
Phone: 503/659-5660
Telex: 360771

PARTS LIST



VO25

SPECIFICATIONS

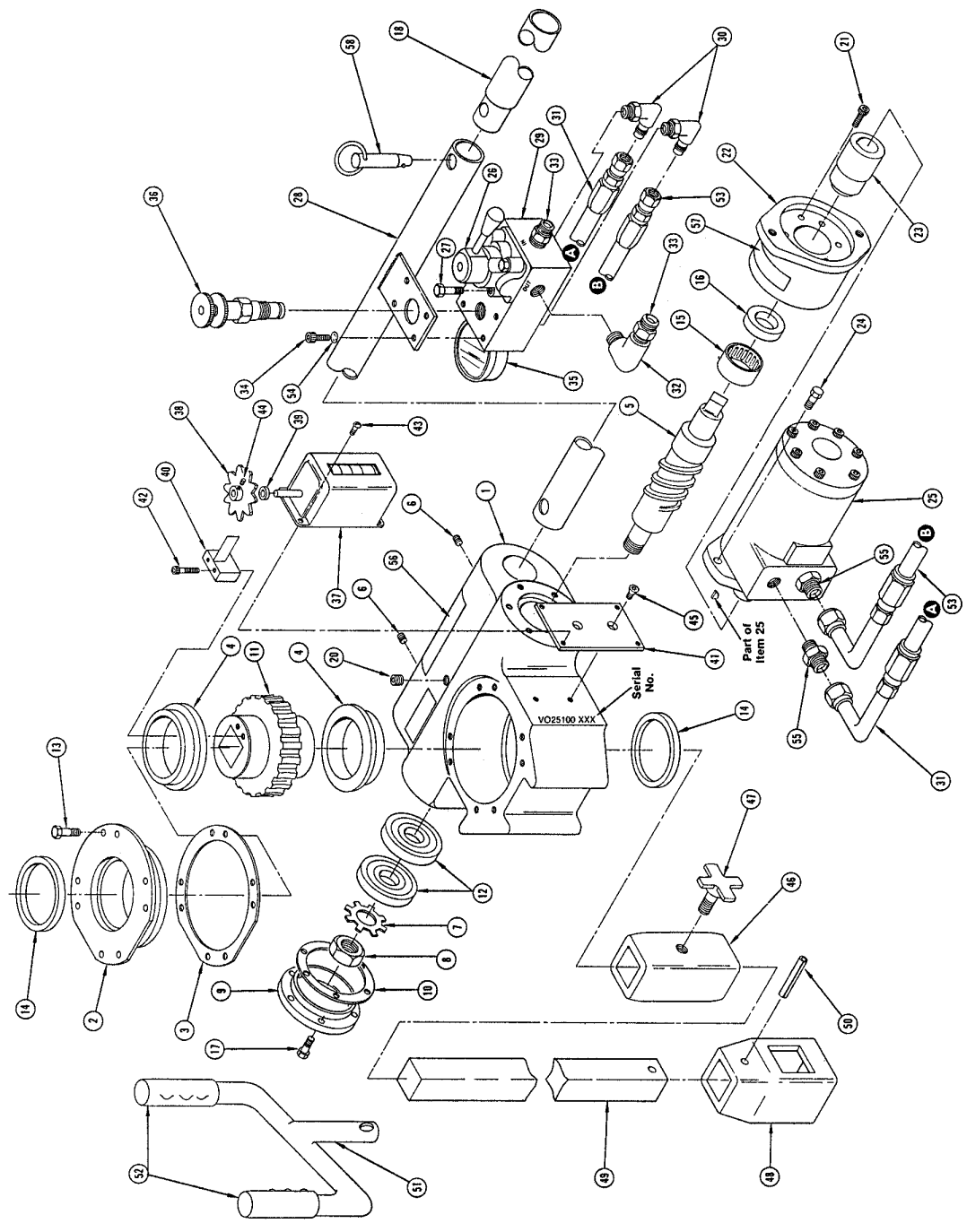
Weight	48 lbs/21.6 kg
Length	37 in./94 cm
Width	11-1/2 in./29 cm
Height	6 in./15.25 cm
Pressure Range	1500-2000 psi/105-140 BAR
Flow Range	7-9 gpm/26-34 lpm
Porting	1/2 NPT
Connect Size	3/8 NPT
System Type	Open Center

MODEL VO25

**HYDRAULIC
VALVE OPERATOR**

Item No.	Part No.	Qty.	Description
1	08526	1	Gear Housing
2	08527	1	Housing Cover
3	08528	1	Gasket
4	08529	2	Bushing
5	08530	1	Worm Shaft
6	08531	3	Set Screw 3/8-16 x 1/2
7	08532	1	Lockwasher
8	08533	1	Locknut
9	08534	1	Bearing Cap
10	08535	1	Gasket
11	08536	1	Worm Gear
12	08537	2	Bearing
13	00899	8	Hex Head Capscrew 1/4-20 x 1/2
14	08538	1	Seal
15	08539	1	Seal
16	08540	1	Hex Head Capscrew 1/4-20 x 5/8
17	07628	6	Handle Extension
18	08541	1	Storage Case (not illustrated)
19	08542	1	Pipe Plug 1/8 NPT
20	08543	1	Hex Socket Head Capscrew 1/4-20 x 1
21	01521	6	Motor Adaptor
22	08543	1	Motor Coupling
23	08544	1	Hex Head Capscrew 1/2-13 x 1
24	04205	2	Hydraulic Motor
25	08545	1	Hydraulic Valve
26	08546	1	Valve Mounting Bolt
27	08547	4	Handle
28	08548	1	Hydraulic Manifold
29	08549	2	Adapter 80-3/8 Male Pipe to 1/2 JIC Male
30	08550	1	Hose Assemblies - 16-inch
31	08551	1	Street Elbow 1/2
32	03263	1	Adapter 1/2 NPT Male to 3/8 NPT Male
33	03263	2	Manifold Mounting Bolt
34	08553	4	Torque/Pressure Gauge
35	08554	1	Relief Valve
36	08555	1	Revolution Counter
37	08556	1	Star Wheel
38	08557	1	Felt Washer
39	08558	1	Washer
40	08559	1	Counter Mounting Plate
41	08560	1	Hex Socket Head Capscrew 1/4-20 x 1-1/4
42	00045	2	Round Head Machine Screw 6-32 x 5/16
43	08561	4	Set Screw 10-24 x 3/8 Hex Socket
44	08562	2	Flat Head Hex Socket Capscrew 1/4-20 x 1/2
45	02487	1	Stop Collar
46	08563	1	Locking Screw
47	08564	1	Socket - 2-inch sq.
48	08565	1	Fast Pin 3/8 x 1/2
49	08566	1	Handle Grip
50	08567	1	Handle Bar Torque Arm Extension
51	08568	2	Hose Assembly - 14-inch
52	08570	1	Lockwasher 5/16
53	03031	4	Hex Nipple 1/2 NPT to 1/2 JIC
54	08571	2	Stanley Sticker
55	05152	1	GPM Sticker 7-9 gpm 2000 psi
56	03786	1	Fast Pin
57	08572	2	Fast Pin
58	08572	2	Fast Pin

NOTE: Use Part Number and Part Name when ordering.



SET-UP

1. Insert valve key and socket onto valve.
2. Install stop collar at a comfortable height to support weight of machine for operator.
3. Mount the VO25 Valve Operator and connect power source.

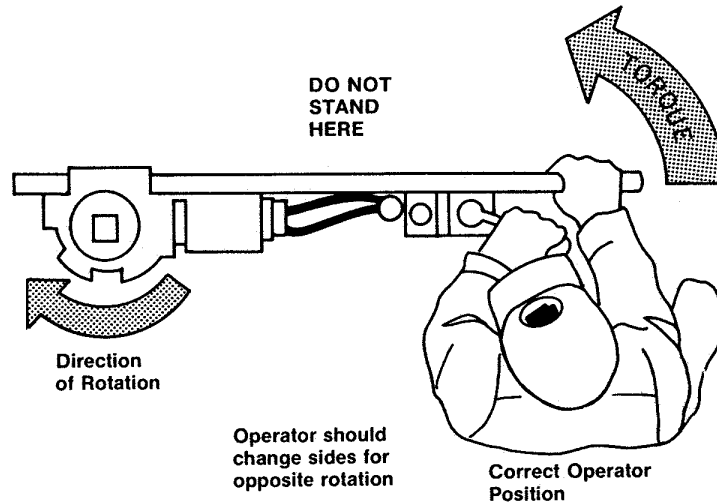
NOTE OF CAUTION TO OPERATORS

The VO25 Valve Operator is capable of producing up to 700 ft. lbs. of torque to turn valves. It is important that proper procedure be exercised when using the valve operating machine.

The operator should stand on the side of the machine which allows the torque to **PULL** the machine handle away from his body.

Standing on the wrong side of the machine will allow the handle to push against the operator and can knock him off balance or pin him against an obstacle if torque suddenly increases.

When positioned properly, an increase in torque will **PULL** the handle and control out of operator's hand and stop the machine (See diagram below).



OPERATION

When operating a valve, a build up of torque can be felt. When this occurs, it is a sign of either a build up of material in the valve gate slides or that the end of travel is approaching. The operator should change sides and reverse the valve direction for a few turns, doing this each time resistance is felt. This method of exercising cleans out tuberculen and other contaminant build up.

LUBRICATION INSTRUCTIONS

Check gearbox monthly to insure proper oil level.

To check oil level, stand the VO25 Valve Operator in a vertical position and remove pipe plug (Item No. 20). If oil level is low, special worm gear oil should be added.

Do not overfill.



helps you do things right

Stanley Hydraulic Tools

Division of The Stanley Works
3810 S.E. Naef Road
Milwaukie, Oregon 97222
Phone: 503/659-5660
Telex: 360771