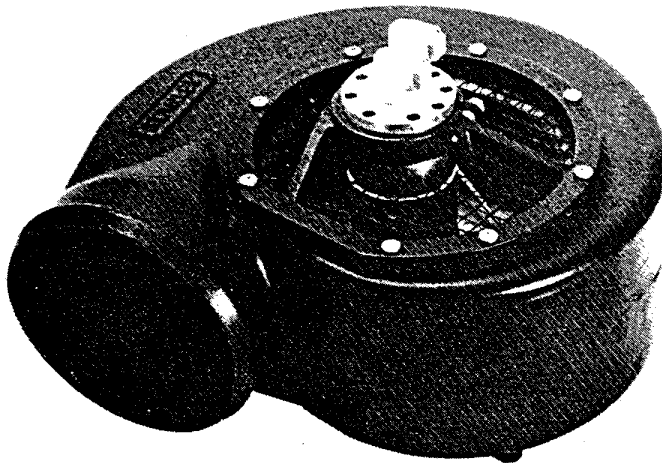


**STANLEY**  
helps you do things right

**Stanley Hydraulic Tools**  
Division of The Stanley Works  
3810 S.E. Naef Road  
Milwaukie, Oregon 97267  
Phone: 503/659-5660  
Telex: 360771

## PARTS LIST



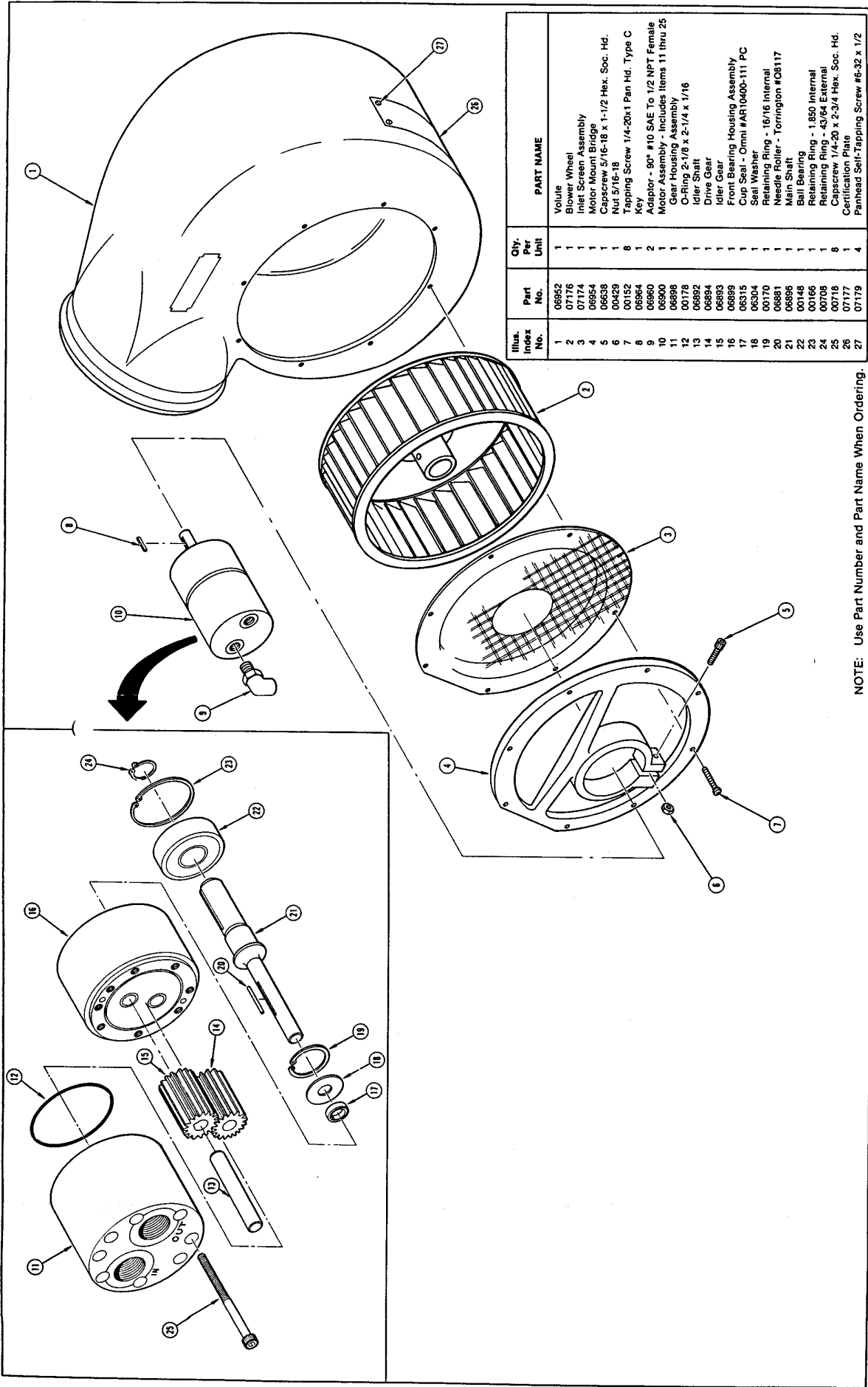
**VF80**

### SPECIFICATIONS

Weight .....	12.5 lbs/5.6 kg
Length .....	15.5 in/39.4 cm
Height .....	9.5 in/24.2 cm
Width .....	16.5 in/42 cm
Pressure Range .....	500-2000 psi/35-140 kg/cm <sup>2</sup>
Flow Range .....	4-12 gpm/15-46 lpm
Outlet ...	7-1/4 in O.D. for use with 8 in. flexible hose 18.5 cm O.D. for use with 20 cm flexible hose
Fan Rating .....	2,300 rpm

**MODEL VF80**

**HYDRAULIC  
VENTILATING  
FAN**



Illus. Index No.	Part No.	Qty. Per Unit	PART NAME
1	06852	1	Volute
2	07176	1	Blower Wheel
3	07174	1	Inlet Screen Assembly
4	06954	1	Motor Mount Bridge
5	06638	1	Cap screw 5/16-18 x 1-1/2 Hex. Soc. Hd.
6	00429	1	Nut 5/16-18
7	00152	8	Tapping Screw 1/4-20x1 Pan Hd. Type C Key
8	06964	1	Adaptor - 90° #10 SAE To 1/2 NPT Female
9	06900	2	Motor Assembly - Includes Items 11 thru 25
10	06898	1	Gear Housing Assembly
11	00178	1	C-Ring 2-1/8 x 2-1/4 x 1/16
12	00178	1	Idle Shaft
13	06892	1	Idle Gear
14	06894	1	Drive Gear
15	06893	1	Idle Gear
16	06899	1	Front Bearing Housing Assembly
17	06315	1	Cup Seal - Omni #AR10400-111 PC
18	06304	1	Seal Washer
19	00170	1	Retaining Ring - 16/16 Internal
20	06881	1	Needle Roller - Torrington #08117
21	06896	1	Main Shaft
22	00148	1	Ball Bearing
23	00166	1	Retaining Ring - 1.850 Internal
24	00168	1	Retaining Ring - 4.364 External
25	00168	8	Cap screw 20 x 2-3/4 Hex. Soc. Hd.
26	07177	1	Grinding Plate
27	07179	4	Pinhead Self-Tapping Screw #6-32 x 1/2

NOTE: Use Part Number and Part Name When Ordering.

**STANLEY**<sup>®</sup>  
helps you do things right

**Stanley Hydraulic Tools**

Division of The Stanley Works  
3810 S.E. Naef Road  
Milwaukie, Oregon 97267  
Phone: 503/659-5660  
Telex: 360771