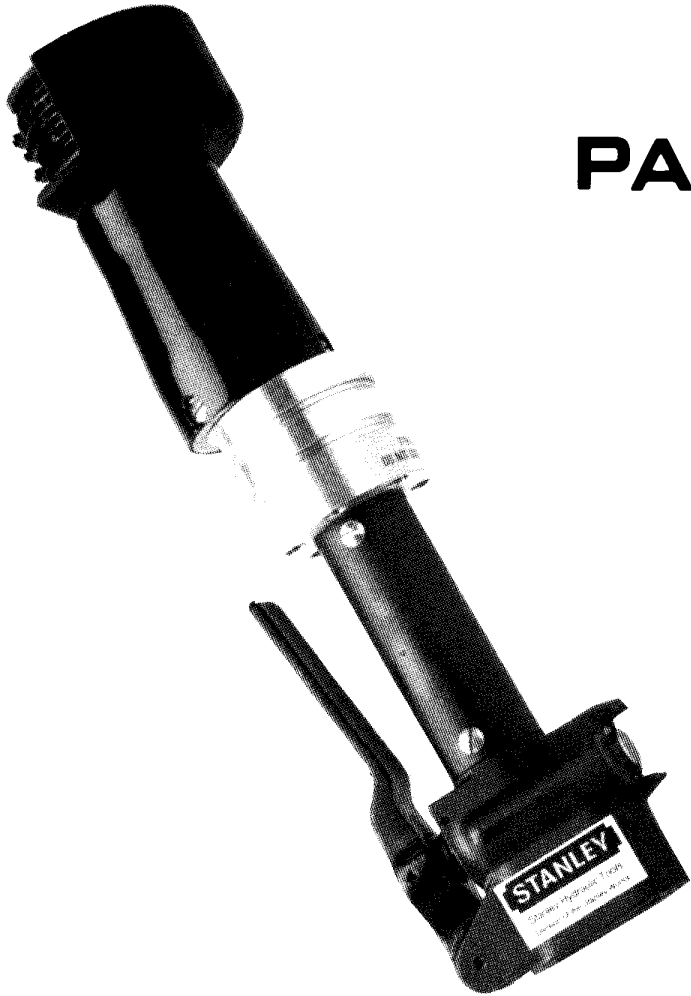


STANLEY
helps you do things right

Stanley Hydraulic Tools
Division of The Stanley Works
3810 S.E. Naef Road
Milwaukie, Oregon 97222
Phone: 503/659-5660
Telex: 360771

PARTS LIST

SC10



SPECIFICATIONS

Weight	6 lbs/2.7 kg
Pressure Range	1000-2000 psi/70-140 BAR
Flow Range	7-9 gpm/26-34 lpm
Porting	3/8 SAE
Length	15 in/38.1 cm
Width	3.8 in/9.8 cm
System Type	o.c. or c.c.

MODEL SC10

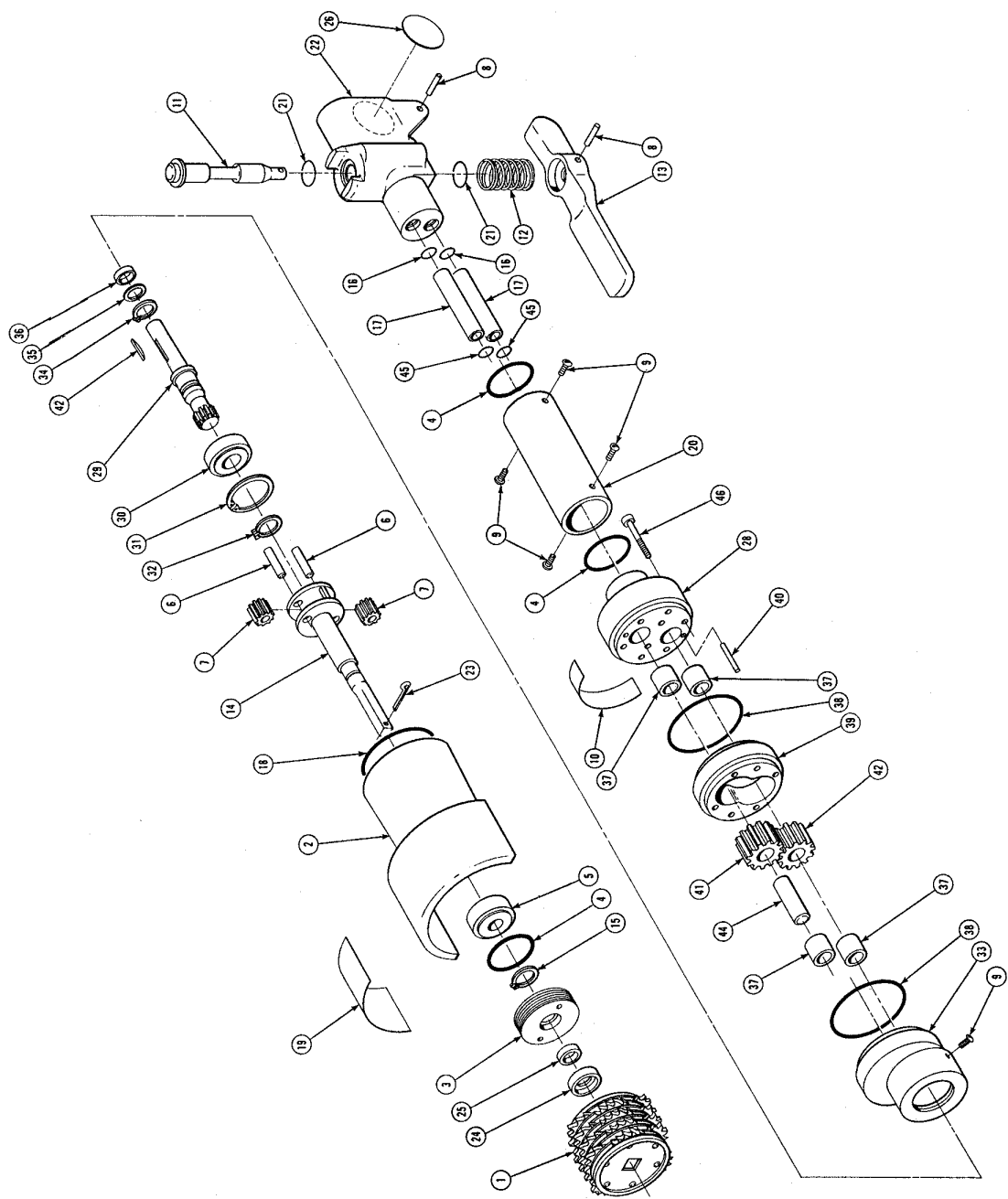
**HYDRAULIC
SCALER**

Illus. Index No.	Part No.	Qty. Per Unit	PART NAME
1	04087	1	Scaler Wheel
2	04088	1	Nose Assembly
3	04089	1	Nose Cap
4	03282	3	C-Ring, 1-1/4 x 1-3/8 x 1/16 Ⓞ
5	04090	1	Bearing
6	04090	2	Planet Gear Shaft
7	03285	2	Planet Gear Assembly
8	00114	2	Roll Pin, 5/32 x 1 *
9	00181	7	Machine Screw, 10-24 x 3/8 Oval Hd.
10	03785	1	GPM Sticker
11	04480	1	Valve Spool Assembly (o.c. - land)
12	04482	1	Valve Spool Assembly (o.c. - Underwater)
13	04096	1	Spring *
14	04095	1	Planet Gear Frame (land)
15	04476	1	Planet Gear Frame (Underwater)
16	03226	1	Retaining Ring, 15/32 Ext. *
17	00018	2	C-Ring, 7/16 x 9/16 x 1/16 Ⓞ
18	04091	2	Oil Tube
19	00049	1	Cautions Sticker
20	04088	1	Handle Tube
21	04092	1	C-Ring, 5/8 x 3/4 x 1/16 Ⓞ
22	01231	2	Valve Spool Assembly
23	02808	1	Control Pin, 1/8 x 1 *
24	04094	1	Scaler Seal
25	04038	1	Shaft Seal Ⓞ
26	04489	1	Name Tag
27	04099	1	Motor Assembly (Consists of Items 28 thru 46)
28	04666	1	Rear Bearing Retainer Assembly
29	04102	1	Motor Shaft
30	04043	1	Bearing *
31	00116	1	Retaining Ring, 1-1/4 Int.
32	04095	1	Retaining Ring, 19/32 Ext. *
33	04087	1	Planet Gear Retainer Assembly
34	04042	1	Retaining Ring, 3/4 Int. *
35	04104	1	Washer
36	04037	1	Shaft Seal Ⓞ
37	04041	4	Bushing
38	00020	2	C-Ring, 1-11/16 x 1-13/16 x 1/16 Ⓞ
39	00021	2	Gear Chamber
40	00024	2	Dowel Pin, 3/16 x 1
41	04105	1	Idle Gear
42	04106	1	Drive Gear
43	04107	1	Planet Roller *
44	00118	1	Cap Screw, 7/16 x 9/16 x 1/16 Ⓞ
45	00118	2	Cap Screw, 7/16 x 9/16 x 1/16 Ⓞ
46	04045	6	Cap Screw, 10-24 x 1-1/2 Hex. Soc. Sinks.

* Denotes Part in Repair Kit

Ⓞ Denotes Part in Seal Kit

NOTE: Use Part Number and Part Name When Ordering



REPAIR AND SEAL KIT DATA

Part No.	Qty.	Description
Repair Kit Part Number 04665		
03282	1	Bearing
02808	1	Cotter Pin
04043	1	Bearing
04044	1	Needle Roller
04097	1	Spring
00114	2	Roll Pin
03226	1	Retaining Ring
00118	1	Retaining Ring
00008	1	Retaining Ring
04042	1	Retaining Ring
04664	1	Seal Kit

Part No.	Qty.	Description
Seal Kit Part Number 04664		
00621	3	O-Ring
00018	4	O-Ring
00049	1	O-Ring
04038	1	Shaft Seal
01211	2	O-Ring
04037	1	Shaft Seal
00020	2	O-Ring

NOTE: Seal Kit Included In Repair Kit



Stanley Hydraulic Tools

Division of The Stanley Works
3810 S.E. Naef Road
Milwaukie, Oregon 97222
Phone: 503/659-5660
Telex: 360771