

STANLEY
 helps you do things right

Stanley Hydraulic Tools
 Division of The Stanley Works
 (formerly Ackley Manufacturing Co.)
 13770 S E Ambler Road
 Clackamas, Oregon 97015
 Phone 503/659-5660

PARTS LIST

**PR26 &
 PR27**

SPECIFICATIONS

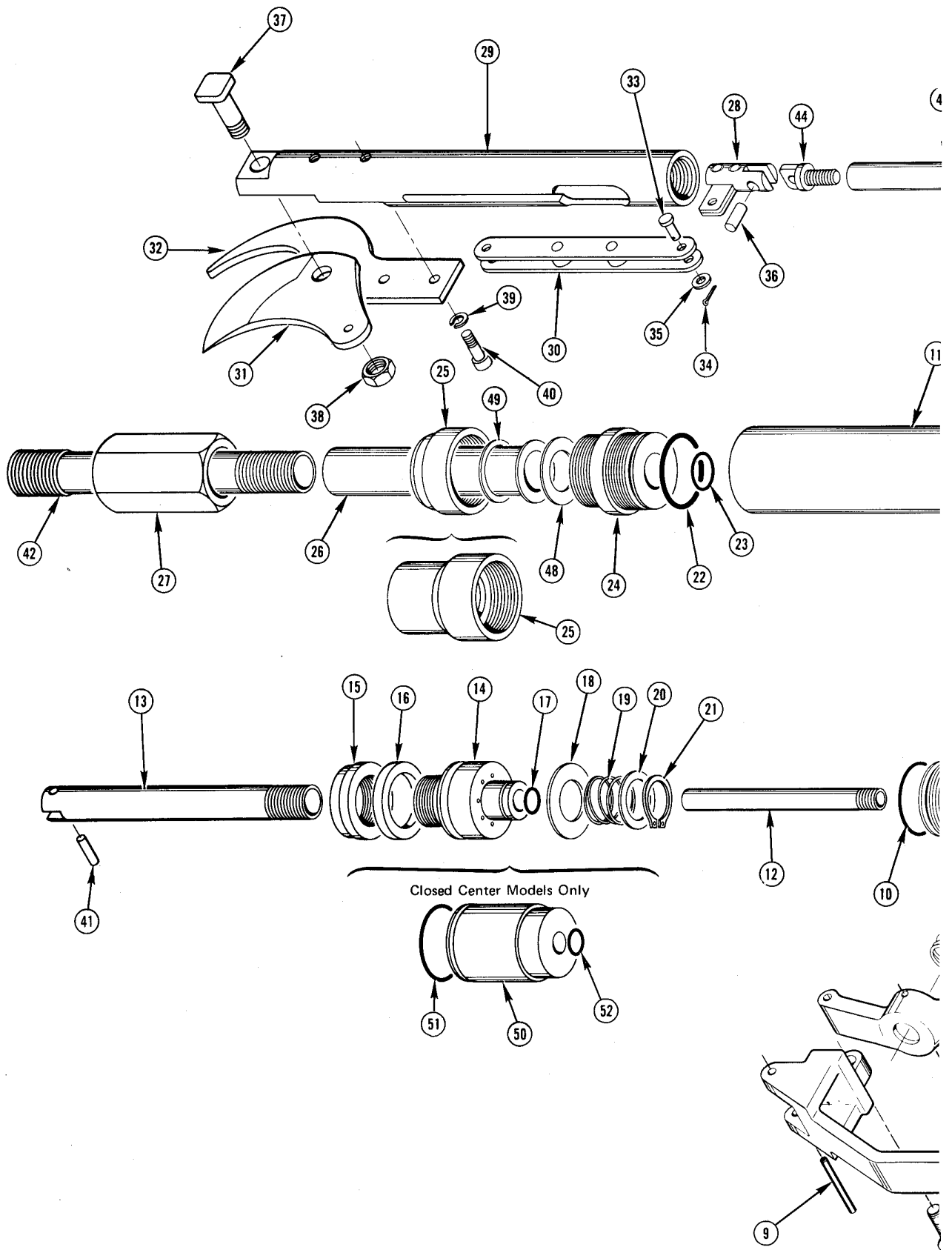
Weight 5-6 lbs/2.27-2.72 kg
 Pressure Range 1000-2000 psi/70.3-140.6 kg/cm²
 Flow Range 3-6 gpm/11.4-22.8 lpm
 Porting 3/8 inch
 System Type OC or CC

	Overall Length	
	in	mm
PR26	36	91.44
.....	48	121.92
.....	84	213.36
PR27	36	91.44
.....	48	121.92
.....	72	182.88

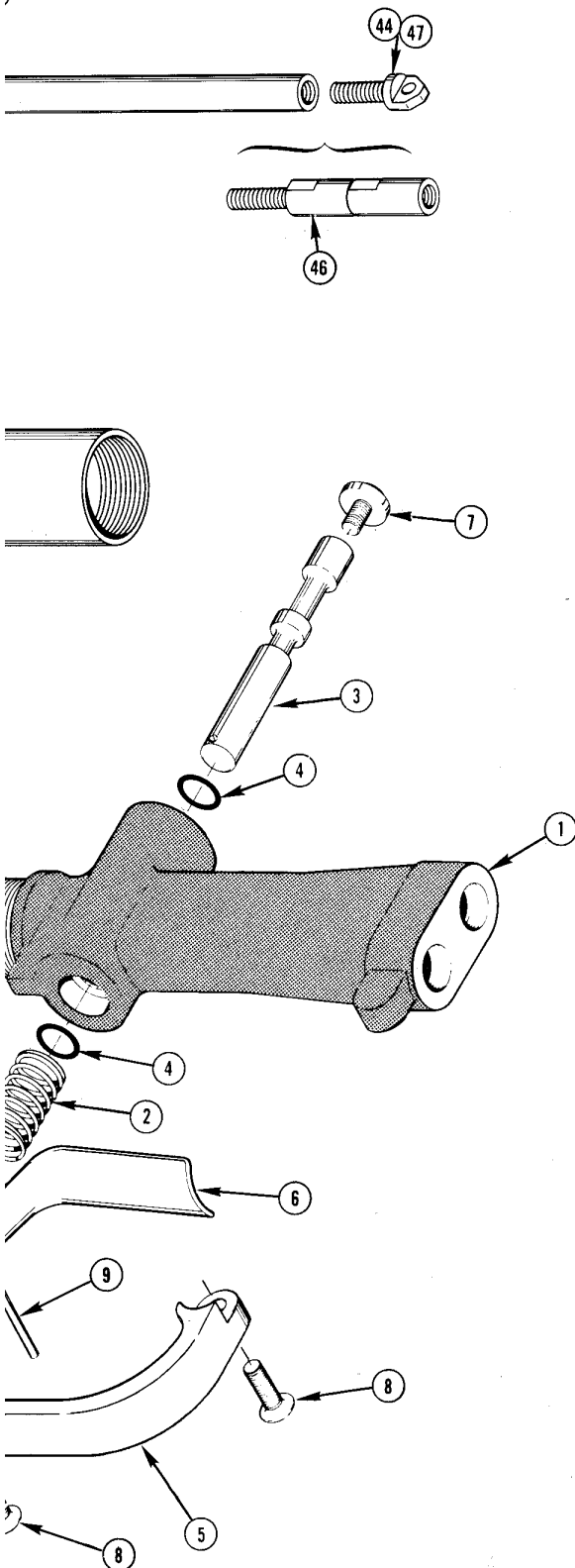
U.S. PATENT NO. 3476015

**MODELS
 PR26 & PR27**

**HYDRAULIC
 ORCHARD PRUNER**



PR 26 PARTS LIST



Illus. Index No.	Part No.	Qty. Per Units	PART NAME
	01811	1	Valve Assembly
1	01990	1	Valve Handle
2	01030	1	Spring•
3	01809	1	Spool
4	00175	2	O-Ring, 1/2 x 5/8 x 1/16 (90 Duro)⊙
5	01715	1	Guard, Trigger
6	01718	1	Trigger
7	01812	1	Screw
8	00160	2	Screw, 1/4-20 x 3/4 Oval Head
9	01534	2	Roll Pin, 1/8 x 1-1/4
10	00294	1	O-Ring, 1-3/16 x 1-5/16 x 1/16 ⊙
11	00259	1	Cylinder
12	00270	1	Cylinder Oil Tube
	00631	1	Piston & Rod Assembly
13	00265	1	Piston Rod
	00328	1	Piston Assembly
14	00330	1	Piston
15	00329	1	Piston Nut
16	00291	1	Seal ⊙
17	00018	1	Oil Tube O-Ring, 7/16 x 9/16 x 1/16 ⊙
18	00273	1	Disc Valve
19	00282	1	Disc Valve Spring•
20	00284	1	Disc Valve Spring Washer
21	00167	1	Retaining Ring•
22	00292	1	O-Ring, 1-1/8 x 1-5/16 x 3/32 ⊙
23	00293	1	O-Ring, 11/16 x 15/16 x 1/16 ⊙
24	00262	1	Cylinder and Bearing
25	00263	1	Coupler Nut
26	00261	1	Coupler Sleeve
27	01987	1	Lock Nut Assembly
28	00256	1	Slide Assembly
29	00264	1	Slide Head
30	00266	1	Knife Linkage
31	00267	1	Knife•
32	00268	1	Hook•
33	01346	2	Clevis Pin•
34	01345	2	Cotter Pin•
35	00222	2	Stop Washer, #10 Flat Brass•
36	00272	1	Dowel Pin, 1/4 x 1/2•
37	00257	1	Knife Bolt•
38	00287	1	Nut 1/2-20 ESSNA•
39	00046	2	Lockwasher, 1/4 High Collar•
40	00047	2	Screw, 1/4-20 x 7/8 Socket Head•
41	00280	1	Linkage Connecting Pin•
42	00307	1	Extension Tube 36"
	00313	1	Extension Tube 48"
	00325	1	Extension Tube 84"
43	00306	1	Linkage Tube Assembly 36"
	00312	1	Linkage Tube Assembly 48"
	00324	1	Linkage Tube Assembly 84"
44	00258	2	Linkage Bolt (included with item 42)
OPTIONAL CLOSED CENTER			
	00632	1	Piston & Rod Assembly
50	00274	1	Piston (closed center)
51	00279	1	O-Ring, 1/8 x 1-1/16 x ID ⊙
52	00018	1	Oil Tube O-Ring, 1/16 x 7/16 ID ⊙

NOTE: Balance of parts for closed center assembly includes all parts listed for open center assembly except 14 thru 21.

- Denotes Part In Repair Kit
- ⊙ Denotes Part In Seal Kit

PR 27 PARTS LIST

Illus. Index No.	Part No.	Qty. Per Units	PART NAME	Illus. Index No.	Part No.	Qty. Per Units	PART NAME
1	01811	1	Valve Assembly	31	00267	1	Knife•
	01990	1	Valve Handle	32	00268	1	Hook•
2	01030	1	Spring•	33	01346	2	Clevis Pin•
3	01809	1	Spool	34	01345	2	Cotter Pin•
4	00175	2	O-Ring, 1/2 x 5/8 x 1/16 (90 Duro)⊙	35	00222	2	Stop Washer, #10 Flat Brass•
5	01715	1	Guard, Trigger	36	00272	1	Dowel Pin, 1/4 x 1/2•
6	01718	1	Trigger	37	00257	1	Knife Bolt•
7	01812	1	Screw	38	00287	1	Nut 1/2-20 ESSNA•
8	00160	2	Screw, 1/4-20 x 3/4 Oval Head	39	00046	2	Lockwasher, 1/4 High Collar•
9	01534	2	Roll Pin, 1/8 x 1-1/4	40	00047	2	Screw, 1/4-20 x 7/8 Socket Head•
10	00294	1	O-Ring, 1-3/16 x 1-5/16 x 1/16	41	00280	1	Linkage Connecting Pin•
11	00259	1	Cylinder	42	00307	1	Extension Tube 36"
12	00270	1	Cylinder Oil Tube		00313	1	Extension Tube 48"
	00631	1	Piston & Rod Assembly		00319	1	Extension Tube 60"
13	00265	1	Piston Rod	43	01761	1	Linkage Tube Assembly 36"
	00328	1	Piston Assembly		01762	1	Linkage Tube Assembly 48"
14	00330	1	Piston		01763	1	Linkage Tube Assembly 60"
15	00329	1	Piston Nut	44	00258	1	Link Bolt
16	00291	1	Seal⊙	45	00743	1	Linkage Tube 36"
17	00018	1	Oil Tube O-Ring, 7/16 x 9/16 x 1/16 ⊙		00745	1	Linkage Tube 48"
18	00273	1	Disc Valve		00747	1	Linkage Tube 60"
19	00282	1	Disc Valve Spring•	46	00770	1	Swivel Assembly
20	00284	1	Disc Valve Spring Washer	47	00735	1	Link Bolt
21	00167	1	Retaining Ring•	48	00740	1	Rear Bearing Washer•
22	00292	1	O-Ring, 1-1/8 x 1-5/16 x 3/32 ⊙	49	00741	1	Front Bearing Washer•
23	00293	1	O-Ring, 11/16 x 15/16 x 1/16 ⊙	OPTIONAL CLOSED CENTER			
24	00262	1	Cylinder End Bearing		00632	1	Piston & Rod Assembly
25	01988	1	Coupler Nut Assembly	50	00274	1	Piston (closed center)
26	00261	1	Coupler Sleeve	51	00279	1	O-Ring, 1/8 x 1-1/16 ID ⊙
27	01987	1	Lock Nut Assembly	52	00018	1	O-Ring, 1/16 x 7/16 ID ⊙
28	00256	1	Slide Assembly				
29	00264	1	Slide Head				
30	00266	1	Knife Linkage				

NOTE: Balance of parts for closed center assembly includes all parts listed for open center assembly except 14 thru 21.

- Denotes Part In Repair Kit
- ⊙ Denotes Part In Seal Kit

NOTE: For PR 26 Models, order Repair Kit Part Number 02050. For PR 27 Models, order Repair Kit Part Number 02048.

REPAIR AND SEAL KIT DATA

Part No.	Qty.	Description
00167	1	Retaining Ring
00257	1	Knife Bolt
00268	1	Hook
00267	1	Knife
00272	1	Dowel Pin, 1/4 x 1/2
00280	1	Dowel Pin, 1/4 x 5/8
00282	1	Valve Spring
00287	1	Nut, 1/4-20 ESSNA
00740	1	Rear bearing washer *
00741	1	Front bearing washer *
00046	2	Washer, 1/4 High Collar Lock
00047	2	Screw, 1/4-20 x 7/8 So, Hd.
01030	1	Valve Spring
01345	2	Cotter Key, 5/64 x 1/2
01346	2	Clevis Pin
00222	2	Washers, #10 Flat Brass Stop
Seal Kit Part No. 02051 - Included in Repair Kit		
00018	1	O-Ring, 7/16 x 9/16 x 1/16 (90 Duro)
00291	1	Piston Seal
00292	1	O-Ring, 1-1/8 5/16 x 3/32
00293	1	O-Ring, 11/16 x 7/8 x 3/32 (90 Duro)
00294	1	O-Ring, 1-3/16 x 1-5/16 x 1/16
00279	1	O-Ring, 1-1/16 x 1-3/16 x 1/16 (90 Duro)

* Denotes PR 27 Only.