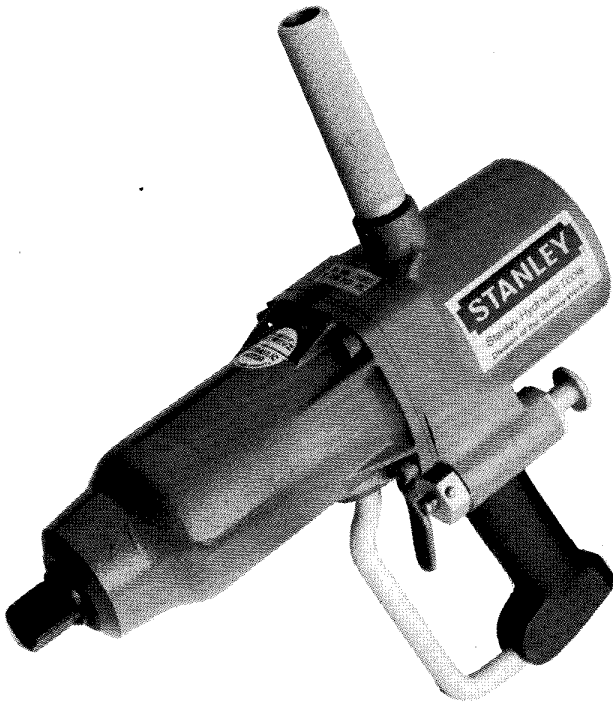


**STANLEY**  
helps you do things right

**Stanley Hydraulic Tools**  
Division of The Stanley Works  
3810 S.E. Naef Road  
Milwaukie, Oregon 97267  
Phone: 503/659-5660  
Telex: 360771

## PARTS LIST

**IW22**



### SPECIFICATIONS

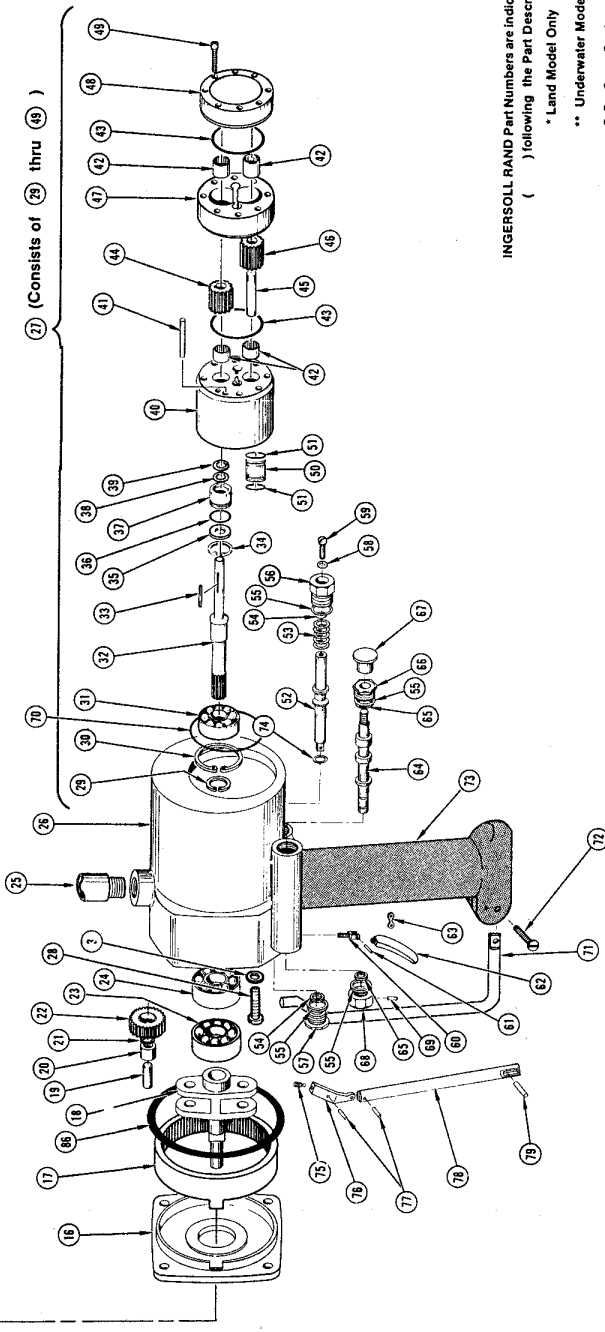
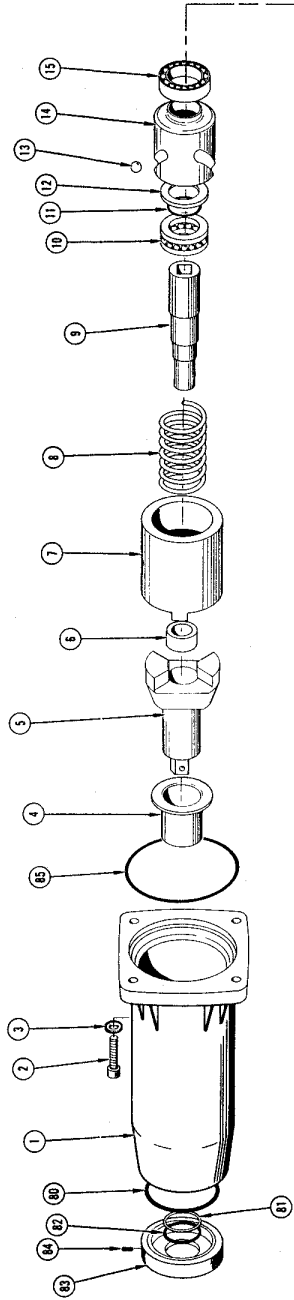
Weight	26 lbs/12 kg
Pressure Range	1000-2000 psi/70-140 bar
Flow Range	7-9 gpm/26-34 lpm
Optimum Flow	9 gpm/34 lpm
Porting	3/8 pipe
System Type	open or closed center
Length	16 in/40 cm

U.S. Patent Nos. 3421412, 3330302, 3350985

**MODEL IW22**

**HYDRAULIC  
IMPACT  
WRENCH**

Illus. Index No.	Part No.	Qty. Per Unit	PART NAME
1	01246	1	Case, Impact Mechanism *
2	01391	1	Case, Impact Mechanism **
3	00145	4	Cap screw, 5/16-18 x 1 1/4, Hex. Soc. Hd.
4	00230	4	Cap screw, 5/16-18 x 1 1/4, Hex. Soc. Hd.
5	00231	6	Lockwasher, 5/16 *
6	00231	6	Lockwasher, 5/16, Sln. **
7	00250	1	Bushing, Hammer Case * (IR 503-641)
8	00250	1	Bushing, Hammer Case **
9	06063	1	Anvil (IR 534-726)
10	06066	1	Hammer Driver (IR 534-730)
11	06060	1	Hammer Assy (IR 534A-724A)
12	06061	1	Incl. Item 7-14
13	06045	1	Hammer (IR 534-724)
14	06045	1	Spring (IR 503-728)
15	06045	1	Trust Ball Bearing (IR 534-965A)
16	06054	1	Friction Drive Washer (IR 534-729)
17	06055	2	Ball, 1/2 Dia. (IR D10-280)
18	06059	2	Ball Cam (IR 534-721A)
19	06057	1	Bearing AFBMA 209C031P (IR 555-24)
20	06058	1	Housing Cover (IR 534-720)
21	06146	1	Internal Gear (IR 534-406)
22	06055	1	Gear Frame (IR 534-8)
23	06059	2	Shaft, Planet Gear (IR 534-191)
24	06059	2	Roller, Planet Bearing (IR 511-654)
25	06053	2	Planet Gear (IR 534-10)
26	06112	2	Gear, Planet (IR 534-10)
27	06112	1	Bearing (IR T-13-22)
28	00148	1	Bearing, Ball, Motor Shaft
29	00234	1	Handle - Cross
30	01482	1	Housing Assembly O.C.
31	01389	1	Housing Assembly C.C.
32	02988	1	Motor Assembly, Complete **
33	02989	2	Motor Assembly, Complete **
34	00706	1	Cap screw, 5/16-18 x 1 1/4, Hex. Soc. Hd.
35	00706	1	Cap screw, 5/16-18 x 1 1/4, Hex. Soc. Hd.
36	00148	1	Retainer Ring - Bearing
37	00168	1	Ball Bearing - Motor
38	00673	1	Key
39	00170	1	Retainer, Ring-Seal
40	00169	1	Washer, Seal Retainer
41	00171	1	O-Ring - Seal Gland
42	00172	1	Gland, Shaft Seal
43	00173	1	Quad Ring - Shaft Seal
44	00173	1	Retainer, Shaft Seal
45	00175	1	Quad Ring Retainer
46	00656	2	Dowel Pin
47	00177	2	Needle Bearing
48	00178	2	O-Ring, Housing Seal
49	00203	1	Gear, Drive
50	00203	1	Shaft, Idler
51	00204	1	Gear, Idler
52	00207	1	Gear Chamber
53	00208	1	Rear Bearing Retainer
54	00235	8	Cap screw, 1/2-20 x 1 1/4, Hex. Soc. Hd.
55	00235	8	Cap screw, 1/2-20 x 1 1/4, Hex. Soc. Hd.
56	00174	2	Oil Tube
57	00175	4	O-Ring
58	00219	1	Spool, On - Off * O.C.
59	00225	1	Spool, On - Off * C.C.
60	00244	1	Spool, On - Off ** O.C.
61	00301	1	Spool, On - Off ** C.C.
62	00006	1	Spring - Spool Return **
63	00209	1	Quad Ring - Spool Seal **
64	00214	2	Quad Ring - Spool Seal **
65	00211	4	O-Ring - Cap Seal



INGERSOLL RAND Part Numbers are indicated in ( ) following the Part Description.  
 \* Land Model Only  
 \*\* Underwater Model Only  
 O.C. Open Center  
 C.C. Closed Center

NOTE: Use Part Number and Part Name When Ordering.  
 See Service Instructions Prior to Disassembly

Illus. Index No.	Part No.	Qty. Per Unit	PART NAME
56	00217	1	Spring Cap, On - Off Spool * O.C.
	00303	1	Spring Cap, On - Off Spool * C.C.
	00221	1	Spring Cap, On - Off Spool ** O.C.
	00302	1	Spring Cap, On - Off Spool ** C.C.
57	00126	1	Spool Cap, On - Off *
	00215	1	Spool Cap, On - Off **
58	00222	1	Stop Washer *
	01176	1	Stop Washer **
59	00223	1	Screw - Stop *
	00134	1	Screw - Stop **
60	00616	1	Hinge, Trigger *
61	00072	1	Roll Pin *
62	00070	1	Trigger *
63	00113	1	Link *
64	00213	1	Spool - Reversing *
	00238	1	Spool - Reversing **
65	00214	2	Quad Ring, Reversing Spool Seal
66	00215	1	Cap - Reversing Spool Seal
67	00100	1	Knob - Reversing
68	00210	1	Cap - Reversing Detent

Illus. Index No.	Part No.	Qty. Per Unit	PART NAME
69	00083	1	Detent *
	00097	1	Detent **
70	00149	1	O-Ring, Motor Seal
71	00164	1	Guard - Trigger
72	00165	1	Screw, 1/4-20 x 1 Plated *
	00094	1	Screw, 1/4-20 x 1 Stn. **
73			Handle Insulation
74	00224	1	Retainer Ring - C.C. Spool *
75	00911	1	Hinge - Trigger **
76	00913	1	Trigger - Upper **
77	00128	2	Roll Pin **
78	00912	1	Trigger - Lower **
79	00129	1	Roll Pin **
80	00253	1	O-Ring - Pack Nut To Case **
81	00254	1	Quad Ring, Anvil Seal **
82	00252	1	O-Ring - Nut To Anvil **
83	00251	1	Nut, Packing **
84	00721	2	Lock - Pack Nut **
85	00255	1	O-Ring, Hammer Case To Closure **
86	01265	1	O-Ring, Motor Housing To Closure **
N.I.	00961	1	Plug - Pipe 1/8 Stn. **

## REPAIR AND SEAL KIT DATA

Part No.	Qty.	Description	Part No.	Qty.	Description	Part No.	Qty.	Description
<b>Repair Kit Part No. 01130 (Land Model)</b>			<b>Repair Kit Part No. 01132 (Underwater Model)</b>			<b>01129 Seal Kit (Land Models)</b>		
00006	1	Spring	00128	2	Roll Pin	<b>01131 Seal Kit (Underwater Models)</b>		
00616	1	Trigger Hinge	00129	1	Roll Pin	00149	1	O-Ring
00072	1	Roll Pin	00148	2	Bearing	00171	1	O-Ring
00083	1	Det. Ball and Screw	00166	1	Retaining Ring	00172	1	Seal Liner
00113	1	Trigger Link	00169	1	Seal Liner Washer	00173	1	Quad Ring
00148	2	Bearing	00170	1	Retaining Ring	00175	4	O-Ring
00166	1	Retaining Ring	00206	1	Key	00178	2	O-Ring
00169	1	Seal Liner Washer	00209	1	Spring	00211	4	O-Ring
00170	1	Retaining Ring	00708	1	Retainer Ring	00214	4	Quad Ring
00206	1	Key	00721	1	Lock	01203	1	Washer
00224	1	Retainer Ring	00911	1	Trigger Hinge	00252	1	O-Ring
00708	1	Retainer Ring	00653	1	Key	00253	1	O-Ring
00653	1	Key	01131	1	Seal Kit	00254	1	Quad Ring
01129	1	Seal Kit				00255	2	O-Ring
						01265	1	O-Ring

\* Included in Seal Kit  
Part No. 01131 only.



### Stanley Hydraulic Tools

Division of The Stanley Works  
3810 S.E. Naef Road  
Milwaukie, Oregon 97267  
Phone: 503/659-5660  
Telex: 360771