

**STANLEY**

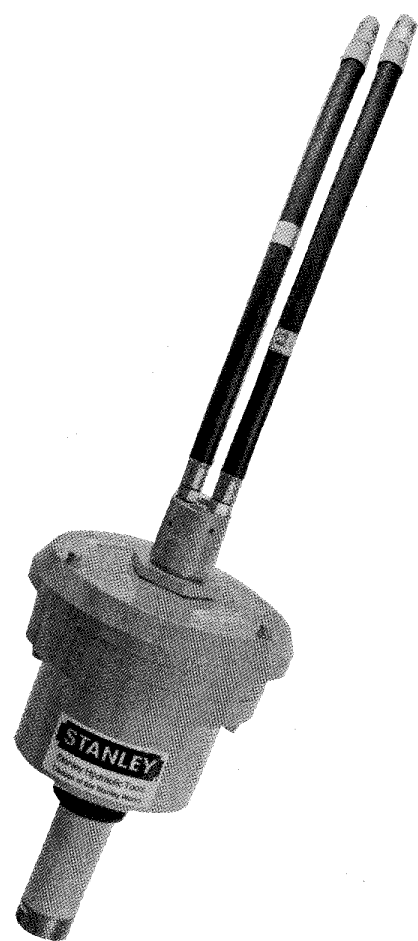
helps you do things right

**Stanley Hydraulic Tools**

Division of The Stanley Works  
3810 S.E. Naef Road  
Milwaukie, Oregon 97267  
Phone: 503/659-5660  
Telex: 360771

# PARTS LIST

**GP09**

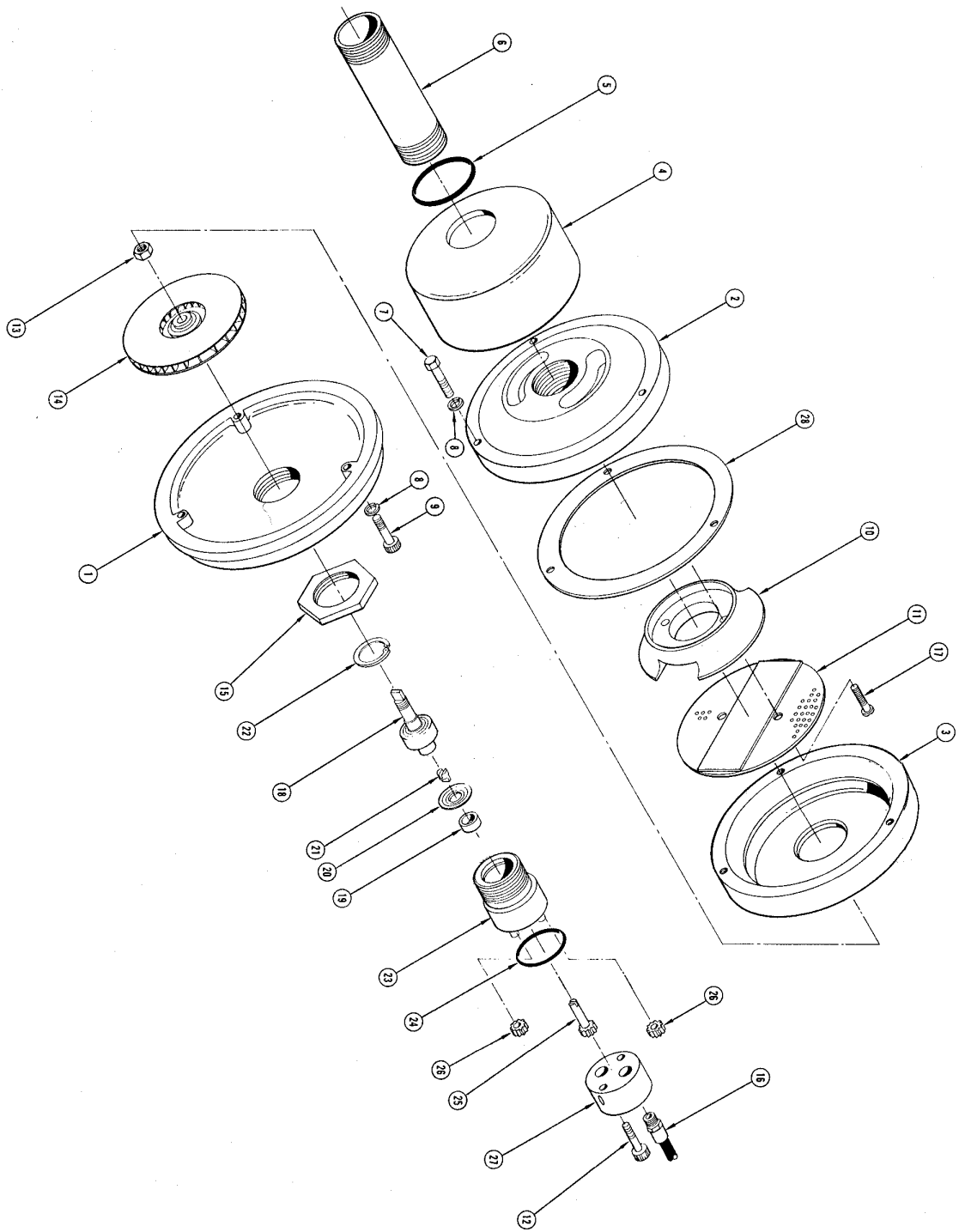


### SPECIFICATIONS

Weight .....	9 lbs/4 kg
Length .....	12 in/30 cm
Diameter .....	9 in/23 cm
Flow Range .....	7-9 gpm/26-34 lpm
Pressure Range .....	1500-2000 psi/105-140 bar
Porting .....	3/8 SAE
Connect Size & Type .....	3/8 male pipe hose ends

**MODEL GP09**

**HYDRAULIC  
GAS PURGER**



Item No.	Part No.	Qty.	Description
1	08212	1	Motor Mount
2	08213	1	Extraction Housing
3	08214	1	Blower Inlet Cover
4	08215	1	Dirt Trap
5	08216	1	Rubber Ring
6	08217	1	Pipe Nipple
7	03760	3	Cap screw 5/16-18 x 1-1/2 Hex Head
8	00283	3	Lockwasher 5/16
9	06638	3	Deflector Ring
10	09076	1	Extractor Barrier Assembly
11	08218	2	Cap screw 3/8-16 x 1-1/2 Hex Soc Head
12	01458	1	Hex Jam Nut 7/16-20
13	03664	1	Hex Soc Head
14	10765	1	Blower Wheel Assembly
15	08221	1	Nut
16	01412	2	Pigtail Hose Assembly
17	09083	2	Screw 1/4-20 x 1 Pan Head
18	08220	1	Hydraulic Motor Assembly
19	08224	1	Includes Items 18-28
20	03220	1	Shaft Assembly
21	03215	1	Seal Washer
22	03217	1	Coupling
23	00118	1	Retaining Ring
24	08223	1	Housing Assembly
25	01262	1	O-Ring
26	03265	1	Drive Gear
27	09063	1	Idler Gear Assembly
28	10763	1	End Cap Assembly
		1	Outlet Screen

NOTE: Use part number and part name when ordering.  
 NOTE: Refer to Concentric motor service instructions prior to motor disassembly.

**STANLEY**<sup>®</sup>

helps you do things right

**Stanley Hydraulic Tools**

Division of The Stanley Works  
3810 S.E. Naef Road  
Milwaukie, Oregon 97267  
Phone: 503/659-5660  
Telex: 360771