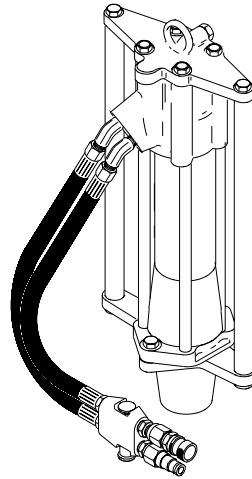


GD50

Hydraulic Rod Driver



Safety ,Operation and Maintenance

User's Manual

 DANGER
SERIOUS INJURY OR DEATH COULD RESULT FROM THE IMPROPER REPAIR OR SERVICE OF THIS TOOL.
REPAIRS AND / OR SERVICE TO THIS TOOL MUST ONLY BE DONE BY AN AUTHORIZED AND CERTI- FIED DEALER.



© 2000 THE STANLEY WORKS.
All rights reserved
OPS/MAINT USA VERSION
Printed in U.S.A.
39234 Ver 3, 10/2002



Stanley Hydraulic Tools
3810 SE Naef Road
Milwaukie, OR 97267-5698 USA
Phone: (503) 659-5660
Fax: (503) 652-1780

SAFETY FIRST

It is the responsibility of the operator and service technician to read rules and instructions for safe and proper operation and maintenance.

A cautious worker
using common sense
is the greatest safety device

COPYRIGHT© 2002 The Stanley Works. All rights reserved.

Under copyright law, this document may not be copied in whole or in part without the prior written consent of The Stanley Works. This exception does not permit copies to be made for others, whether or not sold. Under the law, copying includes translating into another language, format, or medium. This copyright notice must appear on any permitted copies.

Charging The Accumulator	8
Hydraulic Hose Requirements	5
Hydraulic Requirements	6
Operation	7
Parts Illustration	11
Parts List	12
Safety Precautions	2 - 3
Special Service Tools	10
Specifications	10
Tool Stickers and Tags	4
Troubleshooting	9
Warranty	13

SERVICING GD50 Rod Drivers: This manual contains safety, operation, and routine maintenance instructions. Stanley Hydraulic Tools recommends that servicing of hydraulic tools, other than routine maintenance, must be performed by an authorized and certified dealer. Please read the following warning.

 **DANGER**

SERIOUS INJURY OR DEATH COULD RESULT FROM THE IMPROPER REPAIR OR SERVICE OF THIS TOOL.

REPAIRS AND / OR SERVICE TO THIS TOOL MUST ONLY BE DONE BY AN AUTHORIZED AND CERTIFIED DEALER.



Tool operators and maintenance personnel must always comply with the safety precautions given in this manual and on the stickers and tags attached to the tool and hose.

These safety precautions are given for your safety. Review them carefully before operating the tool and before performing general maintenance or repairs.

Supervising personnel should develop additional precautions relating to the specific work area and local safety regulations. If so, place the added precautions in the space provided in this manual.

GENERAL SAFETY PRECAUTIONS

The GD50 Hydraulic Rod Driver will provide safe and dependable service if operated in accordance with the instructions given in this manual. Read and understand this manual and any stickers and tags attached to the tool and hoses before operation. Failure to do so could result in personal injury or equipment damage.

- Operator must start in a work area without bystanders. The operator must be familiar with all prohibited work areas such as excessive slopes and dangerous terrain conditions.
- Establish a training program for all operators to ensure safe operation.
- Do not operate the tool unless thoroughly trained or under the supervision of an instructor.
- Always wear safety equipment such as goggles, ear and head protection, and safety shoes at all times when operating the tool.
- Do not inspect or clean the tool while the hydraulic power source is connected. Accidental engagement of the tool can cause serious injury.
- Always connect hoses to the tool hose couplers before energizing the hydraulic power source. Be sure all hose connections are tight.
- Do not operate the tool at oil temperatures above 140°F/60°C. Operation at higher temperatures can cause higher than normal temperatures at the tool which can result in operator discomfort.
- Do not operate a damaged, improperly adjusted, or incompletely assembled rod driver.
- Do not weld, cut with an acetylene torch, or hardface the rod driver anvil or guide housing.
- To avoid personal injury or equipment damage, all tool repair, maintenance and service must only be performed by authorized and properly trained personnel.
- Always replace parts with replacement parts recommended by Stanley Hydraulic Tools.
- Check fastener tightness often and before each use daily.

TOOL STICKERS & TAGS

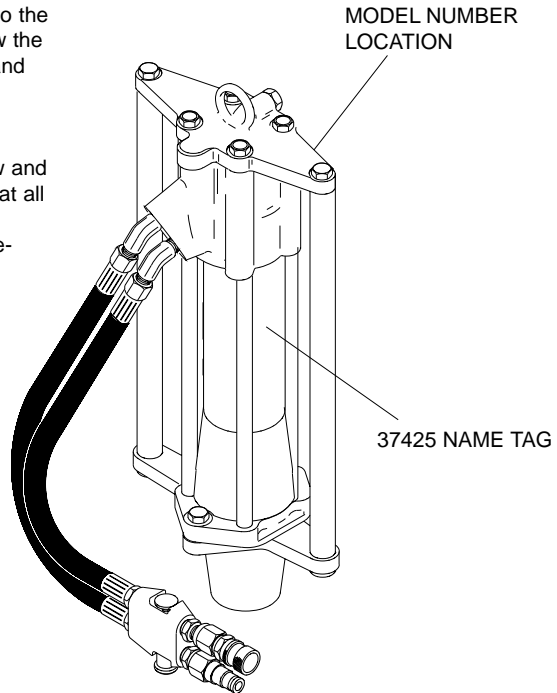
GD50 ROD DRIVER

FLOW 26-34 LPM/7-9 GPM
 PRESS 105-140 BAR
 1500-2000 PSI
 ACCUMULATOR CHG
 42 BAR/600 PSI
 NITROGEN



A nameplate sticker is attached to the spike driver on the cylinder below the handle. Never exceed the flow and pressure levels specified on this sticker.

The information listed on the flow and pressure sticker must be legible at all times. Replace this sticker if it becomes worn or damaged. A replacement is available from your local Stanley distributor.



The safety tag (p/n 15875) at right is attached to the tool when shipped from the factory. Read and understand the safety instructions listed on this tag before removal. We suggest you retain this tag and attach it to the tool when not in use.

DANGER

1. FAILURE TO USE HYDRAULIC HOSE **LABELED AND CERTIFIED AS NON-CONDUCTIVE** WHEN USING HYDRAULIC TOOLS ON OR NEAR ELECTRICAL LINES MAY RESULT IN DEATH OR SERIOUS INJURY.

BEFORE USING HOSE **LABELED AND CERTIFIED AS NON-CONDUCTIVE** ON OR NEAR ELECTRIC LINES BE SURE THE HOSE IS **MAINTAINED AS NON-CONDUCTIVE**. THE HOSE SHOULD BE REGULARLY TESTED FOR ELECTRIC CURRENT LEAKAGE IN ACCORDANCE WITH YOUR SAFETY DEPARTMENT INSTRUCTIONS.
2. A HYDRAULIC LEAK OR BURST MAY CAUSE OIL INJECTION INTO THE BODY OR CAUSE OTHER SEVERE PERSONAL INJURY.

A **DO NOT EXCEED SPECIFIED FLOW AND PRESSURE FOR THIS TOOL. EXCESS FLOW OR PRESSURE MAY CAUSE A LEAK OR BURST.**

B **DO NOT EXCEED RATED WORKING PRESSURE OF HYDRAULIC HOSE USED WITH THIS TOOL. EXCESS PRESSURE MAY CAUSE A LEAK OR BURST.**

C CHECK TOOL HOSE COUPLERS AND CONNECTORS DAILY FOR LEAKS. **DO NOT FEEL FOR LEAKS WITH YOUR HANDS. CONTACT WITH A LEAK MAY RESULT IN SEVERE PERSONAL INJURY.**

IMPORTANT

READ OPERATION MANUAL AND SAFETY INSTRUCTIONS FOR THIS TOOL BEFORE USING IT.

USE ONLY PARTS AND REPAIR PROCEDURES APPROVED BY STANLEY AND DESCRIBED IN THE OPERATION MANUAL.

TAG TO BE REMOVED ONLY BY TOOL OPERATOR.

SEE OTHER SIDE 15875

DANGER

- D **DO NOT LIFT OR CARRY TOOL BY THE HOSES. DO NOT ABUSE HOSE. DO NOT USE KINKED, TORN OR DAMAGED HOSE.**
3. MAKE SURE HYDRAULIC HOSES ARE PROPERLY CONNECTED TO THE TOOL BEFORE PRESSURING SYSTEM. SYSTEM PRESSURE HOSE MUST ALWAYS BE CONNECTED TO TOOL "IN" PORT. SYSTEM RETURN HOSE MUST ALWAYS BE CONNECTED TO TOOL "OUT" PORT. REVERSING CONNECTIONS MAY CAUSE REVERSE TOOL OPERATION WHICH CAN RESULT IN SEVERE PERSONAL INJURY.
4. DO NOT CONNECT OPEN-CENTER TOOLS TO CLOSED-CENTER HYDRAULIC SYSTEMS. THIS MAY RESULT IN LOSS OF OTHER HYDRAULIC FUNCTIONS POWERED BY THE SAME SYSTEM AND/OR SEVERE PERSONAL INJURY.
5. BYSTANDERS MAY BE INJURED IN YOUR WORK AREA. KEEP BYSTANDERS CLEAR OF YOUR WORK AREA.
6. WEAR HEARING, EYE, FOOT, HAND AND HEAD PROTECTION.
7. TO AVOID PERSONAL INJURY OR EQUIPMENT DAMAGE, ALL TOOL REPAIR MAINTENANCE AND SERVICE MUST ONLY BE PERFORMED BY AUTHORIZED AND PROPERLY TRAINED PERSONNEL.

IMPORTANT

READ OPERATION MANUAL AND SAFETY INSTRUCTIONS FOR THIS TOOL BEFORE USING IT.

USE ONLY PARTS AND REPAIR PROCEDURES APPROVED BY STANLEY AND DESCRIBED IN THE OPERATION MANUAL.

TAG TO BE REMOVED ONLY BY TOOL OPERATOR.

SEE OTHER SIDE 15875

SAFETY TAG P/N 15875 (shown smaller than actual size)

HYDRAULIC HOSE REQUIREMENTS

HOSE TYPES

Hydraulic hose types authorized for use with Stanley Hydraulic Tools are as follows:

- ① Certified non-conductive
- ② Wire-braided (conductive)
- ③ Fabric-braided (not certified or labeled non-conductive)

Hose ① listed above is the only hose authorized for use near electrical conductors.

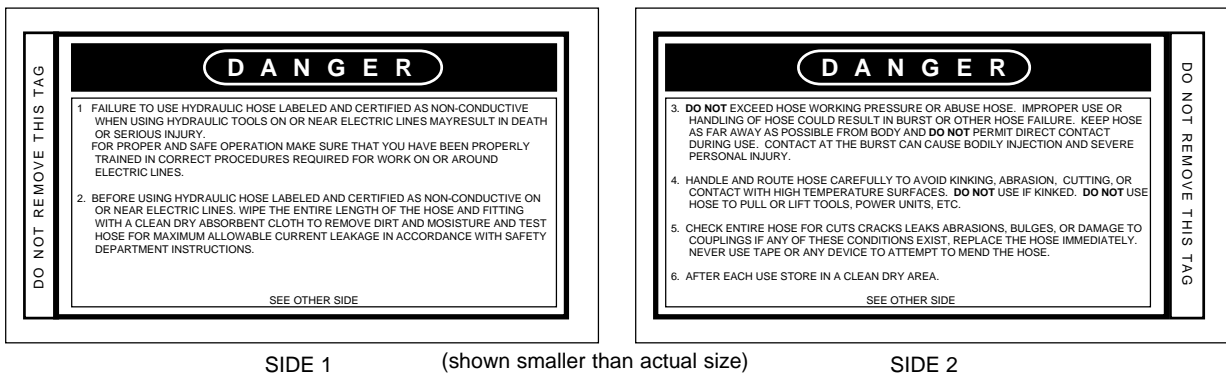
Hoses ② and ③ listed above are **conductive** and **must never** be used near electrical conductors.

HOSE SAFETY TAGS

To help ensure your safety, the following DANGER tags are attached to all hose purchased from Stanley Hydraulic Tools. **DO NOT REMOVE THESE TAGS.**

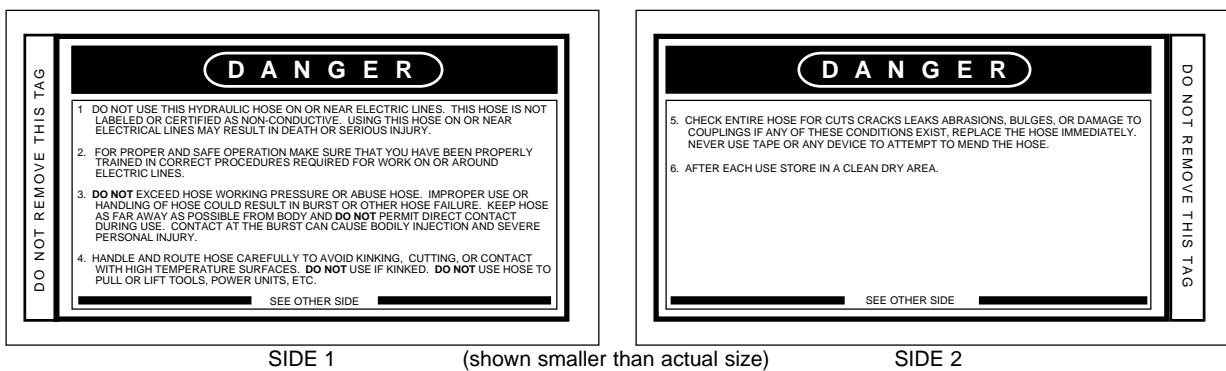
If the information on a tag is illegible because of wear or damage, replace the tag immediately. A new tag may be obtained at no charge from your Stanley Distributor.

The tag shown below is attached to "certified non-conductive" hose.



SIDE 1 (shown smaller than actual size) SIDE 2

The tag shown below is attached to "conductive" hose.



SIDE 1 (shown smaller than actual size) SIDE 2

HOSE PRESSURE RATING

The rated working pressure of the hydraulic hose **must be equal to or higher than** the relief valve setting on the hydraulic system.

HYDRAULIC SYSTEM REQUIREMENTS

- The hydraulic system should provide a flow of 5-9 gpm/19-34 lpm at an operating pressure of 1500-2000 psi/105-140 bar. Recommended relief valve setting is 2100-2250 psi/145-155 bar.
- The system should have no more than 250 psi/17 bar backpressure measured at the tool end of the operating hoses. The system conditions for measurement are at maximum fluid viscosity of 400 ssu/82 centistokes (minimum operating temperatures).
- The hydraulic system should have enough heat rejection capacity to limit the maximum oil temperature to 140°F/60°C at the maximum expected ambient temperature.
- The hydraulic system should have a minimum of 25 micron filtration. Stanley recommends using filter elements sized for a flow of at least 30 gpm/114 lpm for cold temperature startup and maximum dirt holding capacity.
- The hydraulic fluid used should have a viscosity between 100 and 400 ssu/20 and 82 centistokes at the maximum and minimum expected operating temperatures. Petroleum base hydraulic fluids with antiwear properties and a viscosity index over 140 ssu/28 centistokes will meet the recommended requirements over a wide range of operating temperatures.
- The recommended hose size is .500 inch/12 mm I.D. up to 50 ft/15 m long and .625 inch/16 mm I.D. minimum up to 100 ft/30 m long.
- Quick disconnect couplings must conform to NFPA T3.20,15/EHTMA specifications.

PREOPERATION

Preparation For Initial Use

Each unit as shipped has no special unpacking or assembly requirements prior to usage. Inspection to assure the unit was not damaged in shipping and does not contain packing debris is all that is required.

PROCEDURES

Check Hydraulic Power Source

1. Using a calibrated flowmeter and pressure gauge, check that the hydraulic power source develops a flow of 7-10 gpm/26-38 lpm for HTMA type II tools/EHTMA category D at 2000 psi/105-140 bar.
2. Make certain the hydraulic power source is equipped with a relief valve set to open at 2100-2250 psi/145-155 bar minimum.
3. Check that the hydraulic circuit matches the tool for open-center (OC) operation.

Check Tool

1. Make sure the tool contains the correct anvil for the rod size to be driven. Use the 5/8 inch anvil (standard in the model GD50132 & GD50132RF Rod Driver) for 5/8 inch diameter rod. Use the 1 inch anvil (standard in the model GD50133 & GD50133RF Rod Driver) for 3/4 inch to 1 inch diameter rod. Failure to use the correct anvil with the appropriate rod size can result in damage to the tool or personal injury.
2. There should be no signs of leaks.
3. The tool should be clean, with all fittings and fasteners tight.

Check Trigger Mechanism

1. Check that the trigger operates smoothly and is free to travel between the "ON" and "OFF" positions.

Connect Hoses

1. Wipe all hose couplers with a clean lint-free cloth before making connections.
2. Connect the hoses from the hydraulic power source to the hose couplers on the rod driver. It is a good practice to connect the return hose first and disconnect it last to minimize or avoid trapped pressure within the rod driver.
3. Observe flow indicators stamped on hose couplers to be sure that oil will flow in the proper direction. The female coupler is the inlet coupler.

NOTE: The pressure increase in uncoupled hoses left in the sun may result in making them difficult to connect. When possible, connect the free ends of operating hoses together.

OPERATING PROCEDURES

1. Observe all safety precautions.
2. Move the hydraulic circuit control valve to the "ON" position.
3. Place the anvil of the rod driver over the rod to be driven.
4. Ensure adequate down pressure is applied to the rod driver before starting the rod driver. To start the rod driver, press the button on the control valve to the "ON" position. Adequate down pressure is very important. When you wish to stop the tool, press the button on the control valve to the "OFF" position.

COLD WEATHER OPERATION

If the rod driver is to be used during cold weather, preheat the hydraulic fluid at low engine speed. When using the normally recommended fluids, fluid temperature should be at or above 50° F/10° C (400 ssu/82 centistokes) before use.

CHARGING THE ACCUMULATOR

CHARGING THE ACCUMULATOR

To check or charge the accumulator the following equipment is required:

- Accumulator tester (Part Number 02835).
 - Charging assembly (Part Number 06545) (includes a regulator, hose and fitting).
 - NITROGEN bottle with a 800 psi/56 bar minimum charge.
1. Holding the chuck end of the Stanley tester (p/n 02835), turn the gauge fully counterclockwise to ensure the stem inside the chuck is completely retracted.
 2. Thread the tester onto the charging valve of the tool accumulator (do not advance the gauge-end into the chuck end. Turn as a unit). Seat the chuck on the accumulator charging valve by hand tightening only.
 3. Advance the valve stem by turning the gauge- end clockwise.
 4. Connect the charging assembly to the valve on the tester.
 5. Adjust the regulator on the nitrogen bottle to 600

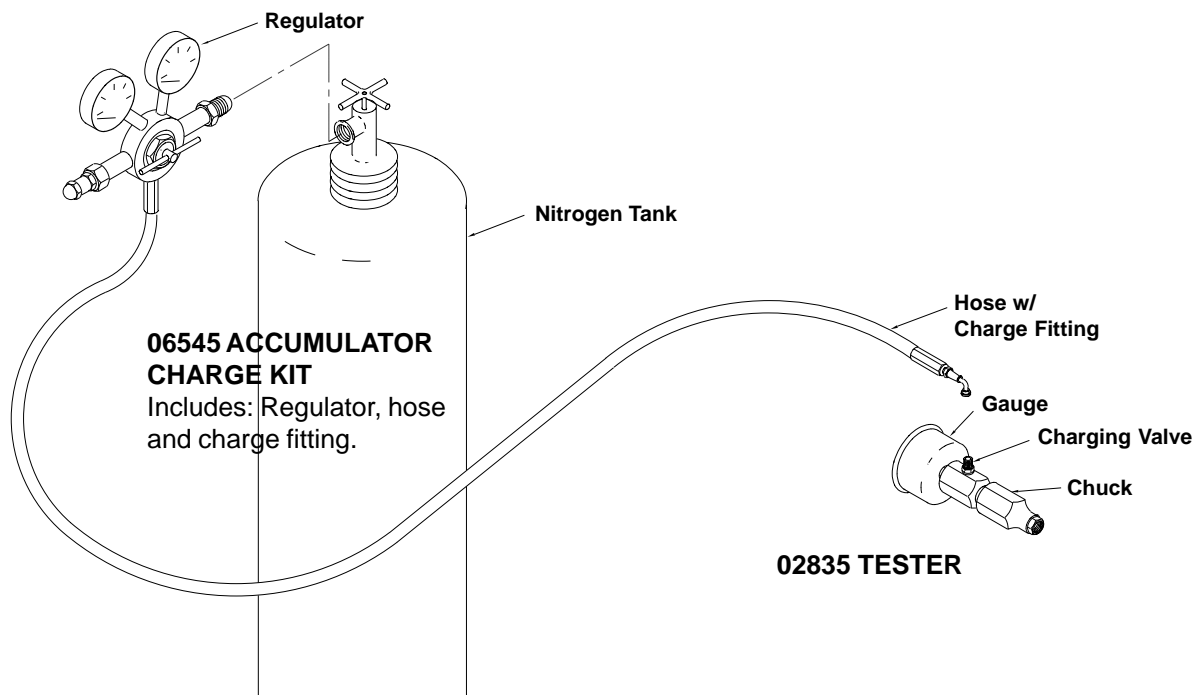
psi/42 bar.

NOTE: It may be necessary to set the regulator at 650-700 psi/41-48 bar to overcome any pressure drop through the charging system.

6. Open the valve on the charging assembly hose. When the tester gauge reads 600-700 psi/41-48 bar, close the valve on the charging assembly hose and remove the charging assembly.
7. Turn the gauge end of the tester fully counterclockwise to retract the plunger in the chuck. Remove the tester from the charge valve.
8. Replace the valve cap.

TESTING THE ACCUMULATOR PRESSURE

1. Follow instructions 1 through 3 under "CHARGING THE ACCUMULATOR".
2. Read the pressure on the gauge. It should be between 500-700 psi/35-48 bar.
3. If the pressure is low, recharge the tool.



TROUBLESHOOTING

If symptoms of poor performance develop, the following chart can be used as a guide to correct the problem.

driver as listed in the table. Use a flowmeter known to be accurate. Check the flow with the hydraulic oil temperature at least 80°F/27°C.

When diagnosing faults in operation of the spike driver, always check that the hydraulic power source is supplying the correct hydraulic flow and pressure to the spike

Rod driver does not run.	Power unit not functioning.	Check power unit for proper flow and pressure (7-10 gpm / 26-38 lpm, 2000 psi / 140 bar).
	Couplers or hoses blocked.	Remove restriction.
	Pressure and return line hoses reversed at ports.	Be sure hoses are connected to their proper ports.
	Mechanical failure of piston or automatic valve.	Have inspected and repaired by authorized dealer.
Rod driver does not hit effectively.	Power unit not functioning.	Check power unit for proper flow and pressure (7-10 gpm / 26-38 lpm, 2000 psi / 140 bar).
	Couplers or hose blocked.	Remove restriction,
	Low accumulator charge (pressure hose will pulse more than normal).	Have recharged by authorized dealer.
	Fluid too hot (above 140° F / 60° C).	Provide cooler to maintain proper fluid temperature.
	Rod Anvil is not sliding freely in the anvil guide.	Remove, clean and replace as required.
Rod driver operates slow.	Low oil flow from power unit.	Check power source for proper flow.
	High backpressure.	Check hydraulic system for excessive backpressure and correct as required.

SPECIFICATIONS

Capacity (Rod Anvil)

1/2 to 5/8 inch/12 to 16 mm diameter rod (model GD50132 & GD50132RF)

3/4 to 1 inch/19 to 25 mm diameter rod (model GD50133 & GD50133RF)

Pressure Range 1500-2000 psi/105-140 bar

Maximum Back Pressure 250 psi/17 bar

Flow Range 5-9 gpm/19-34 lpm

Couplers HTMA/EHTMA Flush Face Type Male & Female

Hose Whips Yes



Weight 57.3 lbs./26 kg

Overall Length 25.5 inches/64.8 cm

Overall Width 10 inches/25.4 cm

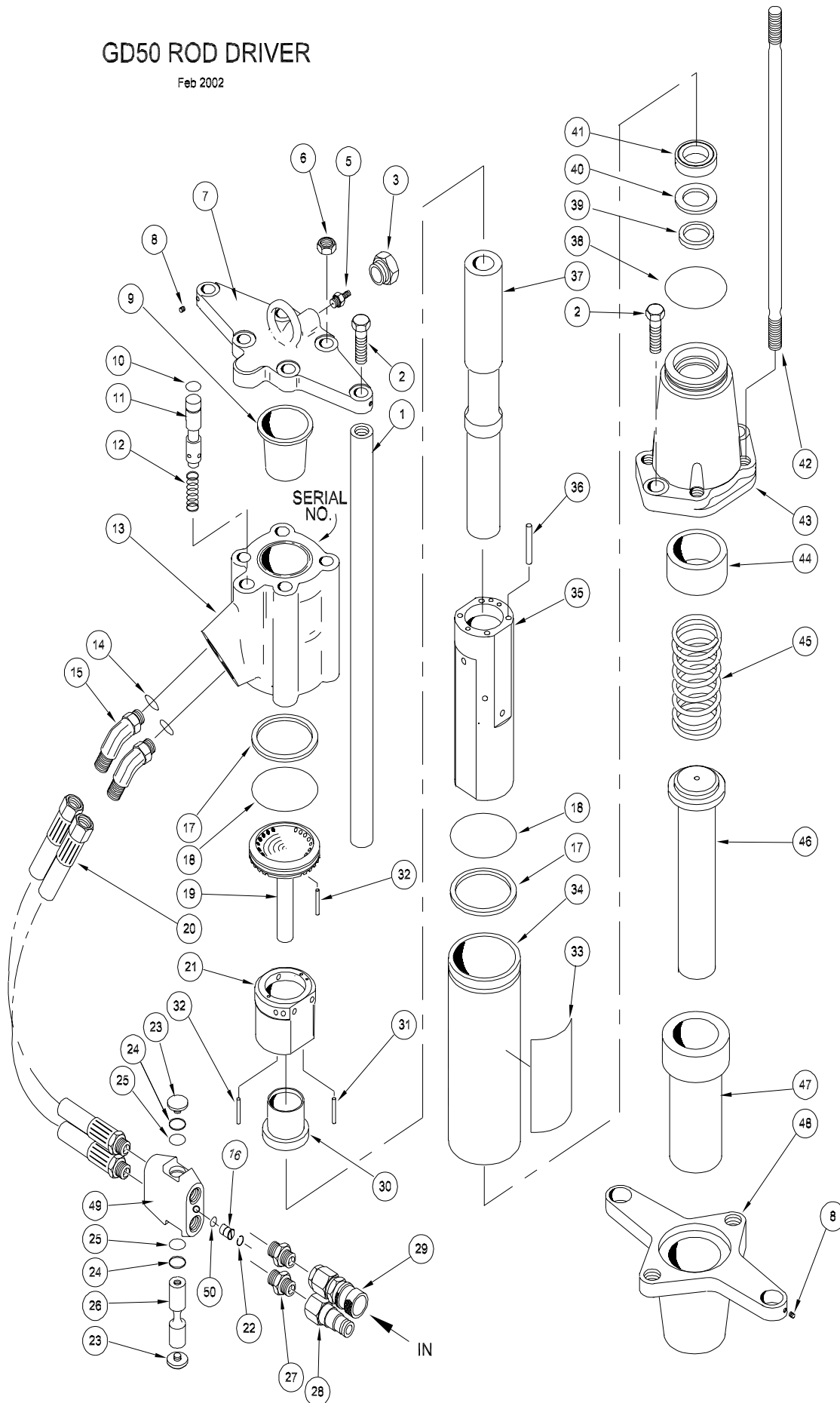
Maximum Fluid Temperature 140° F/60° C

SPECIAL TOOLS

DESCRIPTION	PART NUMBER	USAGE
O-ring Tool Kit	04337	General Service of Seals
Split Rings	04908	Used with 04910
Flow Sleeve Removal Tool	04919	Flow Sleeve Removal
Flow Sleeve Removal Tube	04910	Used with 04908 & 05508
Bearing Puller Kit	05064	General Bearing Pulling
Accumulator Disassembly Tool	05508	Used with 04910
Tamper Sleeve Tool	01120	Used to Pull Porting Block from Valve Block
Accumulator Cylinder Puller	05640	An Aluminum Disk (handy for protecting parts when using an arbor press)

GD50 ROD DRIVER

Feb 2002



GD50 PARTS LIST

Item	Part No.				Qty	Description
	GD50132	GD50133	GD50132RF	GD50133RF		
1	35770	35770	35770	35770	2	Handle Bar
2	370351	370351	370351	370351	4	Capscrew
3	07493	07493	07493	07493	1	O-Ring Plug-Male
4	-----	-----	05243	05243	1	Orifice Plug (Included with Item 13)
5	20499	20499	20499	20499	1	Charge Valve
6	04374	04374	04374	04374	4	Lock Nut
7	15190	15190	15190	15190	1	Top Plate
8	00720	00720	00720	00720	4	Set Screw
9	07479	07479	07479	07479	1	Diaphragm
10	00293	00293	00293	00293	1	O-ring
11	15188	15188	15188	15188	1	Valve Spool
12	04058	04058	04058	04058	1	Spring
13	11588	11588	11588	11588	1	Accumulator Valve Block
14	01605	01605	01605	01605	2	O-ring (Included with Item 15)
15	350000	350000	350000	350000	2	Elbow, 45° (Included with item 14)
16	10536	10536	10536	10536	1	Selector Screw
17	04381	04381	04381	04381	2	Back-up Ring
18	04379	04379	04379	04379	2	O-ring
19	09640	09640	04378	04378	1	Porting Block
20	35784	35784	35784	35784	2	Hose Assy
21	07480	07480	07480	07480	1	Automatic Valve Body
22	16070	16070	16070	16070	1	Retaining Ring
23	01003	01003	01003	01003	2	Valve Button
24	13568	13568	13568	13568	2	Back-up Ring
25	13567	13567	13567	13567	2	O-ring
26	38631	38631	38631	38631	1	Valve Spool
27	00936	00936	00936	00936	2	Adaptor
28	24059	24059	24059	24059	1	Male Coupler Body
29	24058	24058	24058	24058	1	Female Coupler Body
30	04382	04382	04382	04382	1	Automatic Valve
31	04571	04571	04571	04571	2	Push Pin
32	02900	02900	02900	02900	2	Roll Pin
33	37425	37425	37425	37425	1	Name Tag
34	04383	04383	04383	04383	1	Flow Sleeve Tube
35	09611	09611	04384	04384	1	Flow Sleeve
36	04605	04605	04605	04605	4	Push Pin
37	19443	19443	04954	04954	1	Piston
38	02022	02022	02022	02022	1	O-ring
39	03127	03127	04387	04387	1	Wiper Ring
40	09642	09642	04780	04780	1	Back-up Washer
41	34092	34092	04386	04386	1	Cup Seal
42	12139	12139	12139	12139	4	Side Rod
43	35119	35119	43527	43527	1	Adaptor Block
44	12143	12143	12143	12143	1	Upper Anvil Stop
45	12146	12146	12146	12146	1	Spring
46	36106	35751	36106	35751	1	Rod Anvil, 5/8 inch rods (mdl GD50132) Rod Anvil, 3/4 to 1 inch rods (mdl GD50133)
47	35752	35752	35752	35752	1	Anvil Guide
48	35753	35753	35753	35753	1	Guide Housing
49	38629	38629	38629	38629	1	Valve Body Assy.
50	00026	00026	00026	00026	1	O-ring

MODEL DESCRIPTIONS

GD50132 - Rod Driver for 1/2 and 5/8 inch rods

GD50133 - Rod Driver for 3/4 and 1 inch rods

GD50132RF - Rod Driver for 1/2 and 5/8 inch rods

GD50133RF - Rod Driver for 3/4 and 1 inch rods

**CHECK TO MAKE SURE YOU
HAVE THE CORRECT MODEL
NUMBER BEFORE ORDERING**

38632 O.C./C.C. Inline Control Valve

Operating Instructions & Parts List

The 38632 Inline Control Valve is designed to provide the ON/OFF functions for a hydraulic tool connected to either an OPEN CENTER (O.C.) hydraulic system or a CLOSED CENTER (C.C.) hydraulic system. The valve is to be used with tools which do not have an ON/OFF trigger control. The 38632 Control Valve can be used on hydraulic systems producing up to 10 gpm/38 lpm with a maximum relief valve setting of 2500 psi/172 bar. The valve ports are -8 SAE (3/4-16 thread) o-ring ports.

Setting for Open Center (O.C.) or Closed Center (C.C.)

Set the valve to O.C. or C.C. before connecting it to the hydraulic system. To set the valve for open center operation, use a straight blade screw driver to turn the selector screw counter clockwise until it stops. To set the valve for closed center operation, turn the selector screw clockwise until it stops.



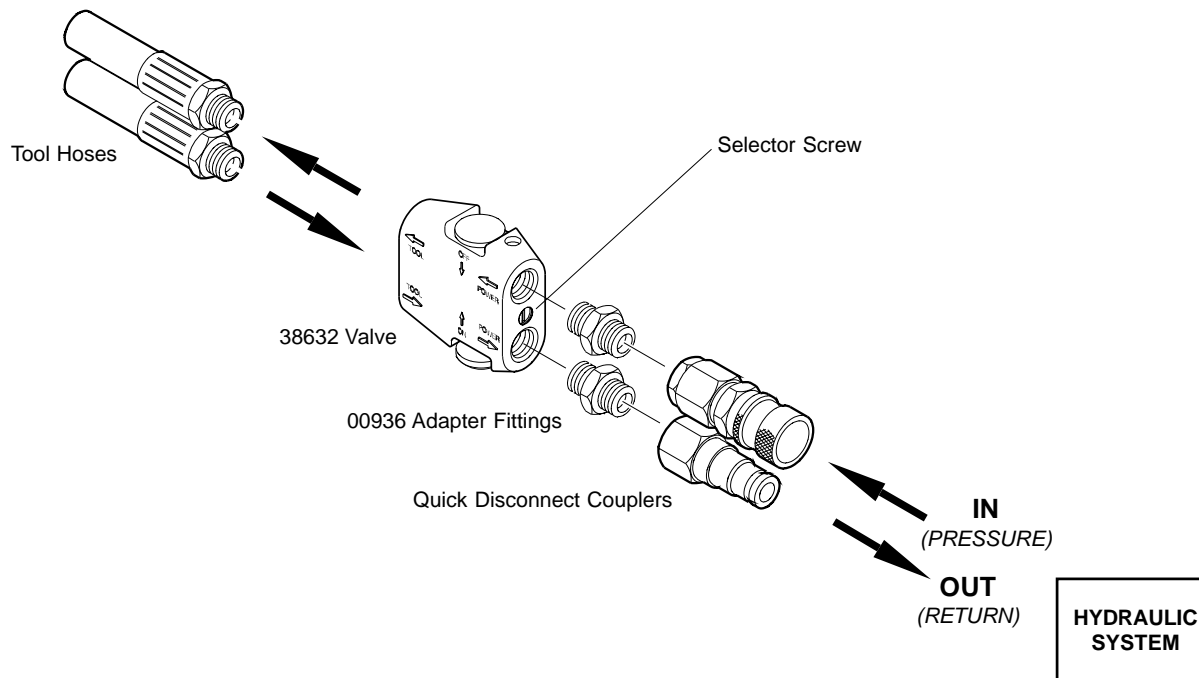
Be sure you know if you have an OPEN CENTER (O.C.) OR CLOSED CENTER (C.C.) hydraulic system, DO NOT attempt to install or operate the 38632 Valve until you do. Incorrect installation or operation of the valve can result in seal failures in the tool, cause excessive heat in the hydraulic system, and may damage the tool and hydraulic system. Understand which type of hydraulic system you are using before installing or operating this valve.

Installing The Valve

Connect the valve to the hydraulic system as shown in the illustration.

Operating The Valve

Connect the valve to the tool using the illustration below as a guide. Make sure the valve spool on the valve is pushed **OFF** before connecting the valve to the hydraulic system. Make sure the hydraulic system is **OFF** before connecting the valve to the hydraulic system. Connect the valve to the hydraulic system. Turn **ON** the hydraulic system. Place the tool to be operated in its operating position. Push the valve spool **ON** to begin operating the tool. Push the valve spool **OFF** to stop operating the tool. Turn the hydraulic system **OFF** before disconnecting the valve.



WARRANTY

Stanley Hydraulic Tools (hereinafter called "Stanley"), subject to the exceptions contained below, warrants new hydraulic tools for a period of one year from the date of sale to the first retail purchaser, or for a period of 2 years from the shipping date from Stanley, whichever period expires first, to be free of defects in material and/or workmanship at the time of delivery, and will, at its option, repair or replace any tool or part of a tool, or new part, which is found upon examination by a Stanley authorized service outlet or by Stanley's factory in Milwaukie, Oregon to be DEFECTIVE IN MATERIAL AND/OR WORKMANSHIP.

EXCEPTIONS FROM WARRANTY

NEW PARTS: New parts which are obtained individually are warranted, subject to the exceptions herein, to be free of defects in material and/or workmanship at the time of delivery and for a period of 6 months after the date of first usage. Seals and diaphragms are warranted to be free of defects in material and/or workmanship at the time of delivery and for a period of 6 months after the date of first usage or 2 years after the date of delivery, whichever period expires first. Warranty for new parts is limited to replacement of defective parts only. Labor is not covered.

FREIGHT COSTS: Freight costs to return parts to Stanley, if requested by Stanley for the purpose of evaluating a warranty claim for warranty credit, are covered under this policy if the claimed part or parts are approved for warranty credit. Freight costs for any part or parts which are not approved for warranty credit will be the responsibility of the individual.

SEALS & DIAPHRAGMS: Seals and diaphragms installed in new tools are warranted to be free of defects in material and/or workmanship for a period of 6 months after the date of first usage, or for a period of 2 years from the shipping date from Stanley, whichever period expires first.

CUTTING ACCESSORIES: Cutting accessories such as breaker tool bits are warranted to be free of defects in material and or workmanship at the time of delivery only.

ITEMS PRODUCED BY OTHER MANUFACTURERS: Components which are not manufactured by Stanley and are warranted by their respective manufacturers.

- a. Costs incurred to remove a Stanley manufactured component in order to service an item manufactured by other manufacturers.

ALTERATIONS & MODIFICATIONS: Alterations or modifications to any tool or part. All obligations under this warranty shall be terminated if the new tool or part is altered or modified in any way.

NORMAL WEAR: any failure or performance deficiency attributable to normal wear and tear such as tool bushings, retaining pins, wear plates, bumpers, retaining rings and plugs, rubber bushings, recoil springs, etc.

INCIDENTAL/CONSEQUENTIAL DAMAGES: To the fullest extent permitted by applicable law, in no event will STANLEY be liable for any incidental, consequential or special damages and/or expenses.

FREIGHT DAMAGE: Damage caused by improper storage or freight handling.

LOSS TIME: Loss of operating time to the user while the tool(s) is out of service.

IMPROPER OPERATION: Any failure or performance deficiency attributable to a failure to follow the guidelines and/or procedures as outlined in the tool's operation and maintenance manual.

MAINTENANCE: Any failure or performance deficiency attributable to not maintaining the tool(s) in good operating condition as outlined in the Operation and Maintenance Manual.

HYDRAULIC PRESSURE & FLOW, HEAT, TYPE OF FLUID: Any failure or performance deficiency attributable to excess hydraulic pressure, excess hydraulic back-pressure, excess hydraulic flow, excessive heat, or incorrect hydraulic fluid.

REPAIRS OR ALTERATIONS: Any failure or performance deficiency attributable to repairs by anyone which in Stanley's sole judgement caused or contributed to the failure or deficiency.

MIS-APPLICATION: Any failure or performance deficiency attributable to mis-application. "Mis-application" is defined as usage of products for which they were not originally intended or usage of products in such a manner which exposes them to abuse or accident, without first obtaining the written consent of Stanley. PERMISSION TO APPLY ANY PRODUCT FOR WHICH IT WAS NOT ORIGINALLY INTENDED CAN ONLY BE OBTAINED FROM STANLEY ENGINEERING.

WARRANTY REGISTRATION: STANLEY ASSUMES NO LIABILITY FOR WARRANTY CLAIMS SUBMITTED FOR WHICH NO TOOL REGISTRATION IS ON RECORD. In the event a warranty claim is submitted and no tool registration is on record, no warranty credit will be issued without first receiving documentation which proves the sale of the tool or the tools' first date of usage. The term "DOCUMENTATION" as used in this paragraph is defined as a bill of sale, or letter of intent from the first retail customer. A WARRANTY REGISTRATION FORM THAT IS NOT ALSO ON RECORD WITH STANLEY WILL NOT BE ACCEPTED AS "DOCUMENTATION".

NO ADDITIONAL WARRANTIES OR REPRESENTATIONS

This limited warranty and the obligation of Stanley thereunder is in lieu of all other warranties, expressed or implied including merchantability or fitness for a particular purpose except for that provided herein. There is no other warranty. This warranty gives the purchaser specific legal rights and other rights may be available which might vary depending upon applicable law.



Stanley Hydraulic Tools • 3810 SE Naef Road • Milwaukie, Oregon 97267-5698
Ph 1-800-549-0517 • Fax 503-652-1780