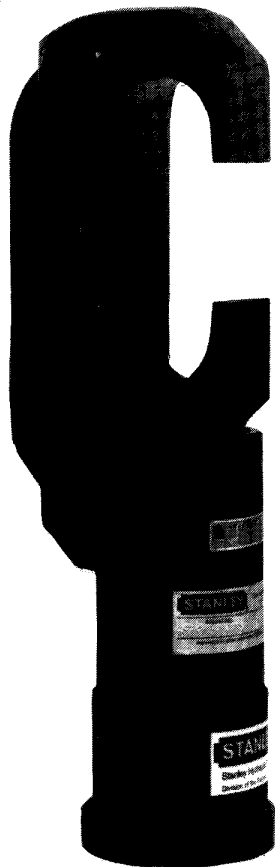


STANLEY[®]

helps you do things right

Stanley Hydraulic Tools

Division of The Stanley Works
3810 S.E. Naef Road
Milwaukie, Oregon 97267
Phone: 503/659-5660
Telex: 360771
Fax: 503/652-1780



PARTS LIST

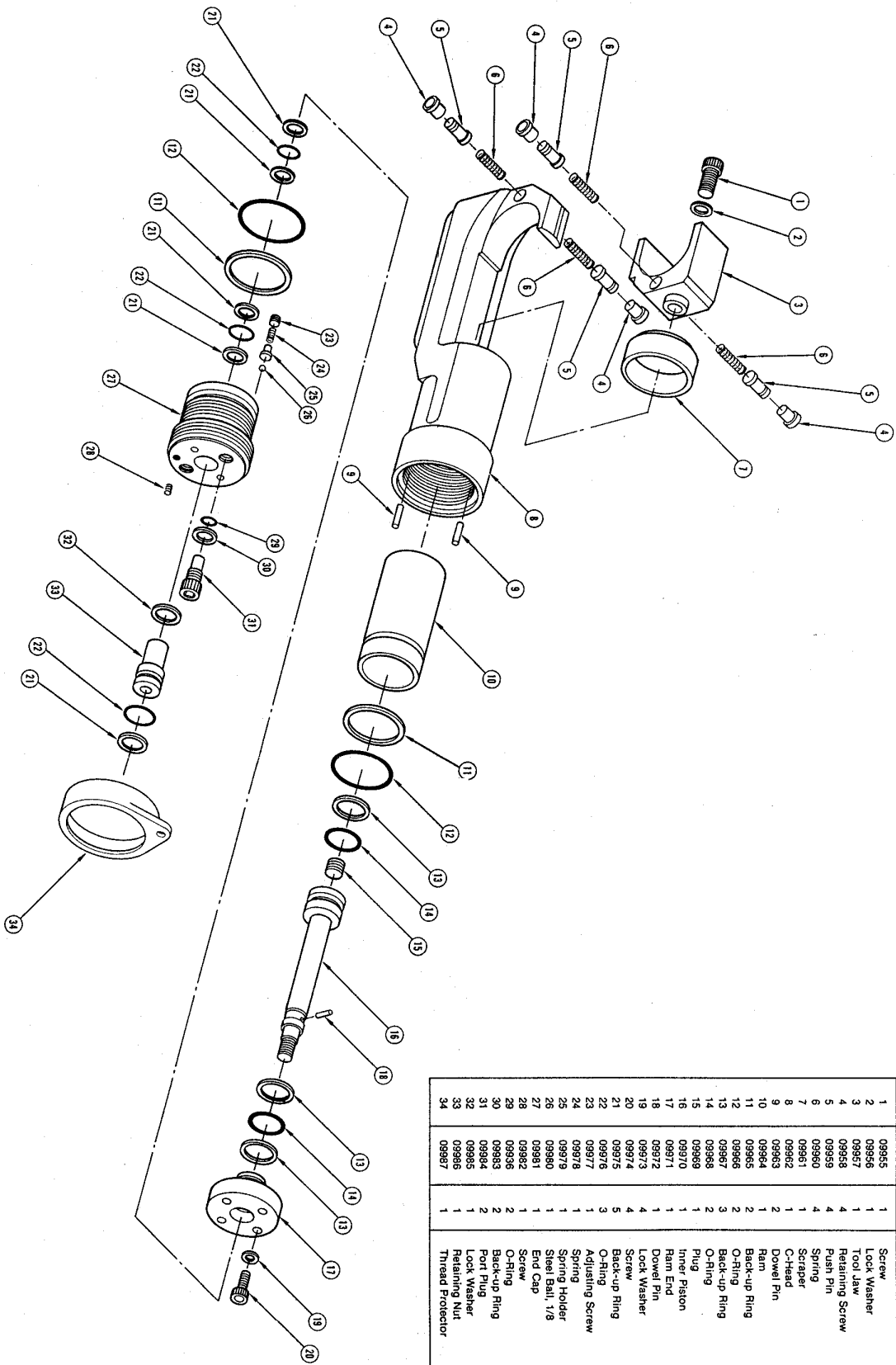
CT15702
10,000 PSI

SPECIFICATIONS

Type	Double Acting
Weight	20 lb/9.1 kg
Length	13 in./33 cm
Width	3 in./7.6 cm
Porting	Oil Tube Port — 1/4 NPSM Female
Capacity ..	Burndy Y46 DIES; Y35 "U" Dies w/adapter
Force Developed	15 Tons
Operating Pressure	10,000 psi/704 BAR

MODEL CT15702
10,000 PSI

**DOUBLE ACTING
COMPRESSION
TOOL**



Item	Part No.	Qty.	Description
1	03955	1	Screw
2	03956	1	Lock Washer
3	03957	1	Tool Jaw
4	03958	4	Retaining Screw
5	03959	1	Push Pin
6	03960	4	Spring
7	03961	1	Sprayer
8	03962	1	C-Head
9	03963	2	Dowel Pin
10	03964	1	Ram
11	03965	2	Back-up Ring
12	03966	2	O-Ring
13	03967	3	Back-up Ring
14	03968	2	O-Ring
15	03969	1	Plug
16	03970	1	Inner Piston
17	03971	1	Ram End
18	03972	1	Dowel Pin
19	03973	4	Lock Washer
20	03974	4	Screw
21	03975	5	Back-up Ring
22	03976	3	O-Ring
23	03977	1	Adjusting Screw
24	03978	1	Spring
25	03979	1	Spring Holder
26	03980	1	Steel Ball 1/8
27	03981	1	End Cap
28	03982	1	Screw
29	03983	2	O-Ring
30	03984	1	Back-up Ring
31	03985	1	Port Plug
32	03986	2	Lock Washer
33	03987	1	Retaining Nut
34	03987	1	Thread Protector

STANLEY[®]

helps you do things right

Stanley Hydraulic Tools

Division of The Stanley Works
3810 S.E. Naef Road
Milwaukie, Oregon 97267
Phone: 503/659-5660
Telex: 360771
Fax: 503/652-1780