

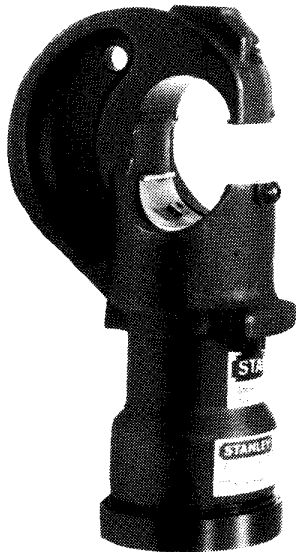
**STANLEY**<sup>®</sup>

helps you do things right

**Stanley Hydraulic Tools**

Division of The Stanley Works  
3810 S.E. Naef Road  
Milwaukie, Oregon 97267  
Phone: 503/659-5660  
Telex: 360771

# PARTS LIST



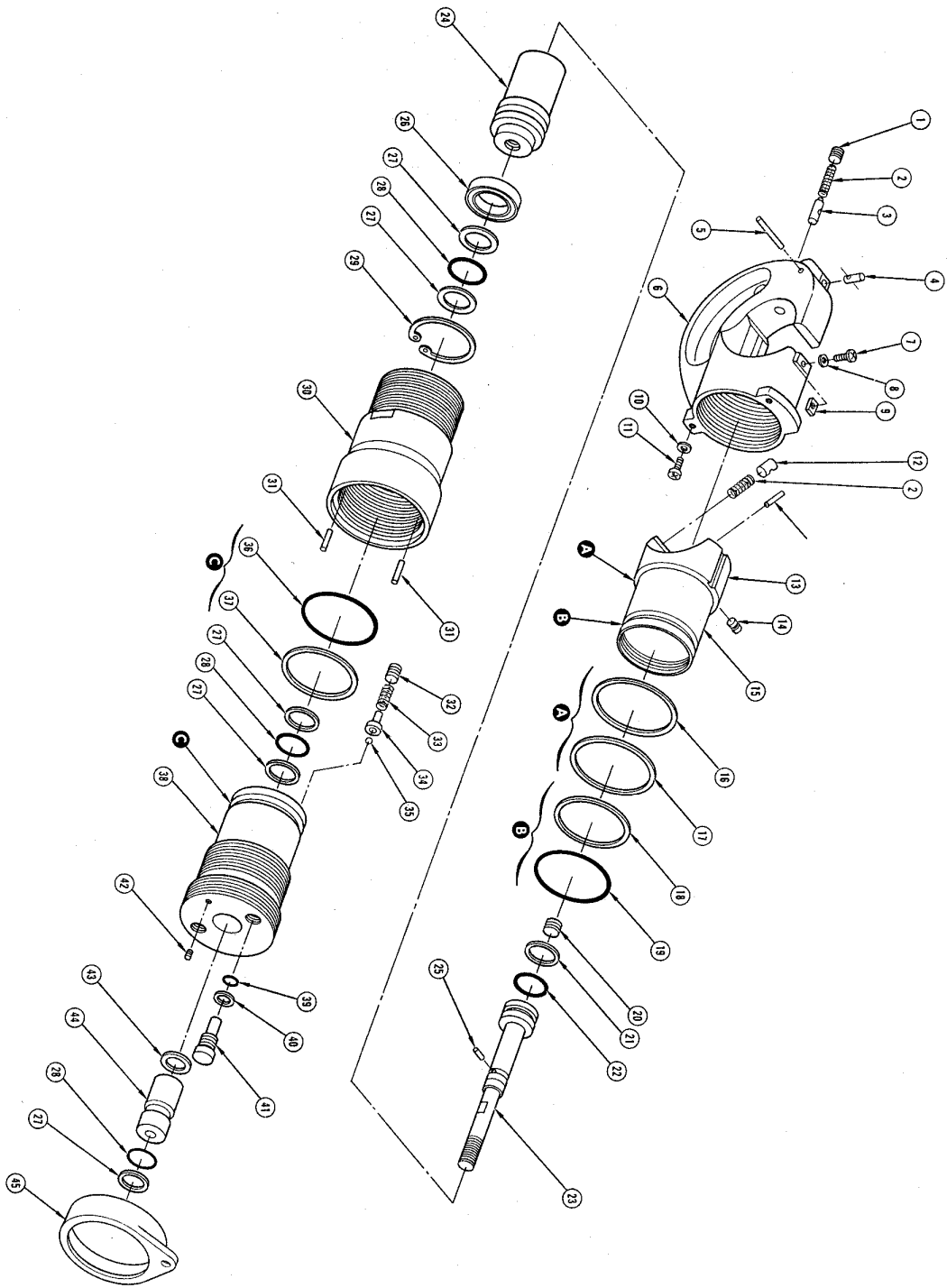
**CT12772**  
**10,000 PSI**

## SPECIFICATIONS

Type .....	Double Acting
Jaw Opening .....	1 in./2.54 cm
Weight .....	10.5 lb/4.8 kg
Length .....	9 in./22.9 cm
Width .....	3 in./7.6 cm
Porting .....	Oil Tube Port — 1/4 NPSM Female
Capacity .....	Burndy Y35 U-DIES
Force Developed .....	12 Tons
Operating Pressure .....	10,000 psi/704 BAR

**MODEL CT12772**  
**10,000 PSI**

**DOUBLE ACTING  
COMPRESSEION  
TOOL**



Item	Part No.	Qty.	Description
1	10263	1	Screw
2	10264	2	Spring
3	10066	1	Retainer Pin
4	10087	1	Die Release Pin
5	10088	1	Drive Pin
6	10099	1	C-Head
7	10090	1	Key Screw
8	10091	1	Star Washer
9	10092	1	Key
10	10093	1	Stopper
11	10094	1	Screw
12	10095	1	Retainer Pin
13	10096	1	Drive Pin
14	10097	1	Ram
15	10098	1	Die Release Pin
16	10099	1	Ram Washer
17	10100	1	Leather Scraper
18	10101	1	Ram Back-up Ring
19	10102	1	Ram O-Ring
20	09969	1	Plug
21	10103	1	Back-up Ring
22	10104	1	O-Ring
23	10105	1	Inner Piston
24	10106	1	Dowel Pin
25	09972	1	Cup Seal
26	10107	1	Back-up Ring
27	09975	5	Back-up Ring
28	09976	1	O-Ring
29	10108	1	Retaining Ring
30	10109	1	Cylinder
31	10110	2	Dowel Pin
32	09977	1	Adjusting Screw
33	09978	1	Spring
34	09979	1	Spring Holder
35	09980	1	Steel Ball, 1/8
36	10111	1	O-Ring
37	10112	1	Back-up Ring
38	10265	1	End Cap
39	09982	2	O-Ring
40	09983	1	Back-up Ring
41	09984	2	Port Plug
42	09985	1	Lock Washer
43	09986	1	Retaining Nut
44	09987	1	Thread Protector
45	09987	1	Thread Protector

**STANLEY**<sup>®</sup>

helps you do things right

**Stanley Hydraulic Tools**

Division of The Stanley Works  
3810 S.E. Naef Road  
Milwaukie, Oregon 97267  
Phone: 503/659-5660  
Telex: 360771