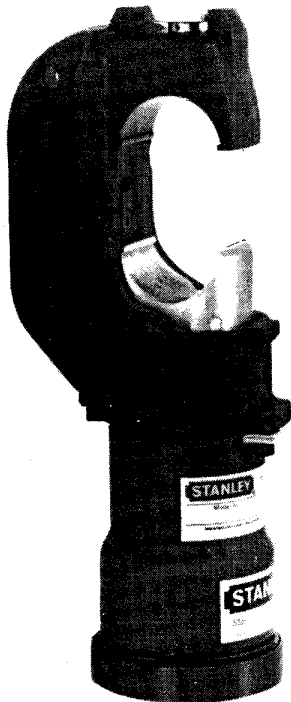


STANLEY
 helps you do things right

Stanley Hydraulic Tools
 Division of The Stanley Works
 3810 S.E. Naef Road
 Milwaukie, Oregon 97267
 Phone: 503/659-5660
 Telex: 360771

PARTS LIST



CT12762
10,000 PSI

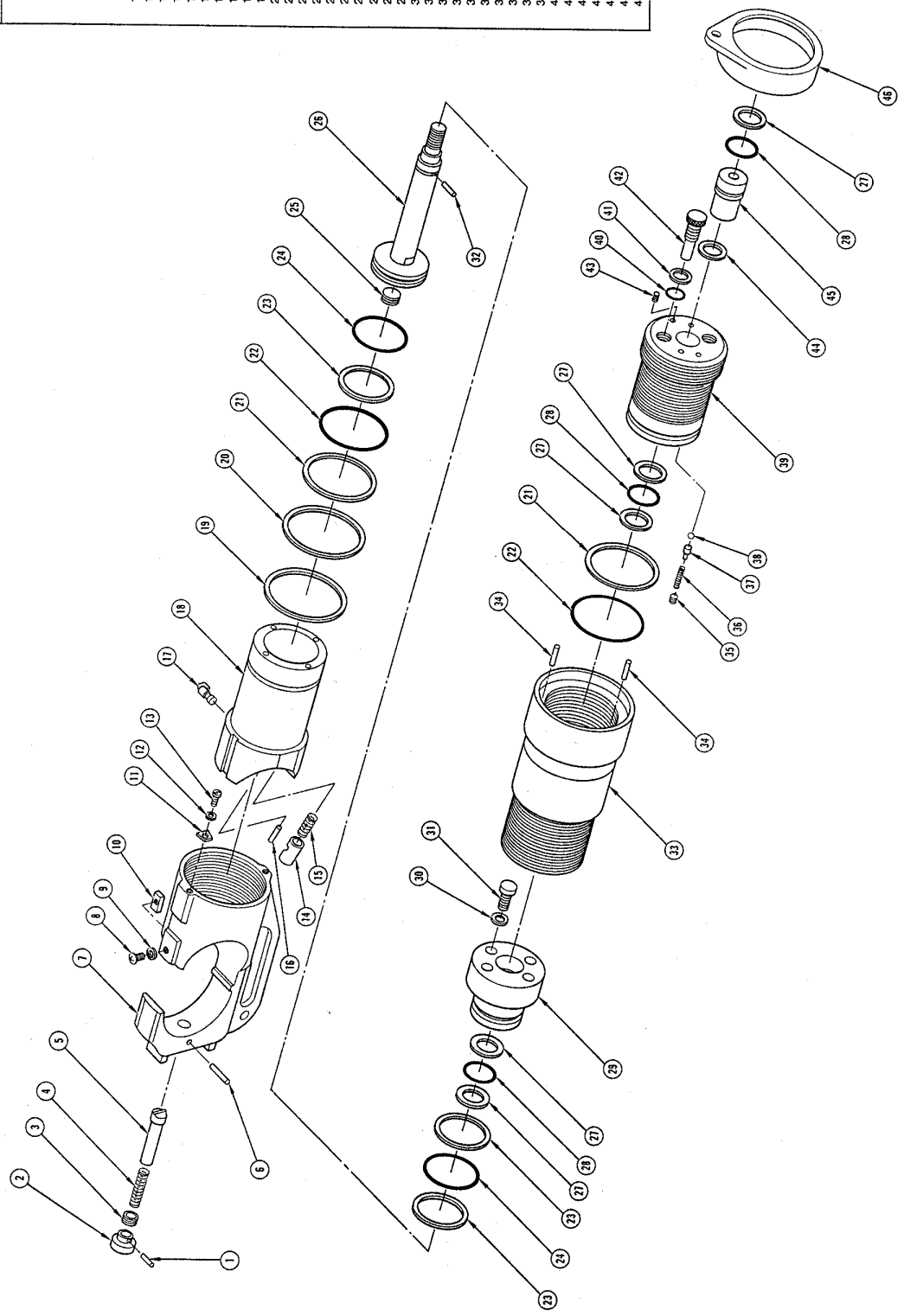
SPECIFICATIONS

Type	Double Acting
Jaw Opening	1-1/2 in./3.9 cm
Weight	14.5 lbs/6.6 kg
Length	10-1/2 in./4.8 kg
Width	3 in./7.6 cm
Porting	Oil Tube Port — 1/4 NPSM Female
Capacity	Burndy Y35 U-DIES
Force Developed	12 Tons
Operating Pressure	10,000 psi/704 BAR

MODEL CT12762
10,000 PSI

**DOUBLE ACTING
 COMPRESSION
 TOOL**

Item	Part No.	Qty.	Description
1	10114	1	Drive Pin
2	10115	1	Die Release Knob
3	10116	1	Screw
4	10117	1	Spring
5	10118	1	Retainer Pin
6	10119	1	Drive Pin
7	10120	1	C-Head
8	10121	1	Screw
9	10345	1	Lock Washer
10	10122	1	Key
11	10123	1	Stopper
12	10265	1	Lock Washer
13	09911	1	Screw
14	10124	1	Retainer Pin
15	10125	1	Spring
16	10126	1	Drive Pin
17	10127	1	Die Release Lever
18	10128	1	Ram
19	10129	1	Ram Washer
20	10130	1	Back-up Ring
21	10346	2	Back-up Ring
22	10347	2	O-Ring
23	09967	3	Back-up Ring
24	09968	2	O-Ring
25	09969	1	Plug
26	10131	1	Inner Piston
27	09975	5	Back-up Ring
28	09976	3	O-Ring
29	10132	1	Ram End
30	09973	4	Lock Washer
31	09974	4	Screw
32	09972	1	Cylinder
33	10133	1	Dowel Pin
34	10134	1	Cylinder
35	09977	2	Adjusting Screw
36	09978	1	Spring Holder
37	09979	1	Spring
38	09980	1	Steel Ball, 1/8
39	10135	1	Cap
40	09936	2	O-Ring
41	09983	2	Back-up Ring
42	09984	2	Port Plug
43	09982	1	Screw
44	09985	1	Lock Washer
45	09986	1	Retaining Nut
46	09987	1	Thread Protector



STANLEY[®]
helps you do things right

Stanley Hydraulic Tools

Division of The Stanley Works
3810 S.E. Naef Road
Milwaukie, Oregon 97267
Phone: 503/659-5660
Telex: 360771