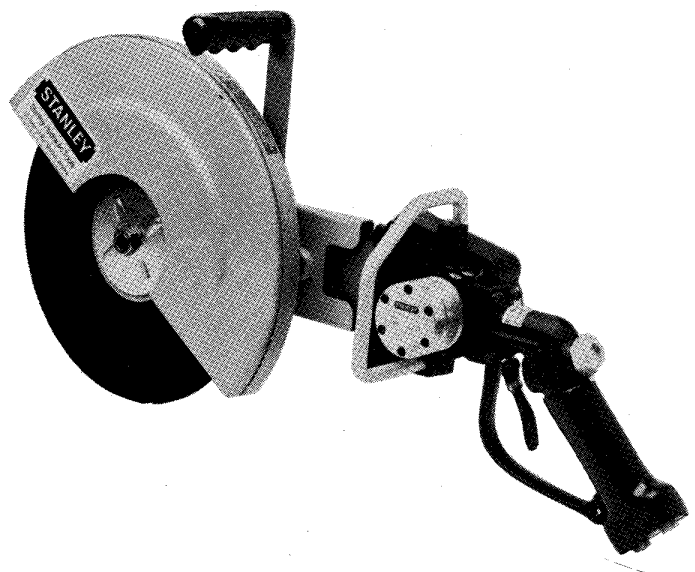


STANLEY
helps you do things right

Stanley Hydraulic Tools
Division of The Stanley Works
3810 S.E. Naef Road
Milwaukie, Oregon 97222
Phone: 503/659-5660
Telex: 360771

PARTS LIST

CO08



SPECIFICATIONS

Weight	16 lbs/7 kg
Pressure Range	1000-2000 psi/70-140 kg/cm ²
Flow Range	7-9 gpm/26-34 lpm
Optimum Flow	8 gpm/30 lpm
Porting	3/8 pipe
Length	26 in/64 cm
Width (at Carrying Handle)	6.5 in/16.5 cm
System Type	open or closed center

MODEL CO08

**HYDRAULIC
CUT OFF SAW**

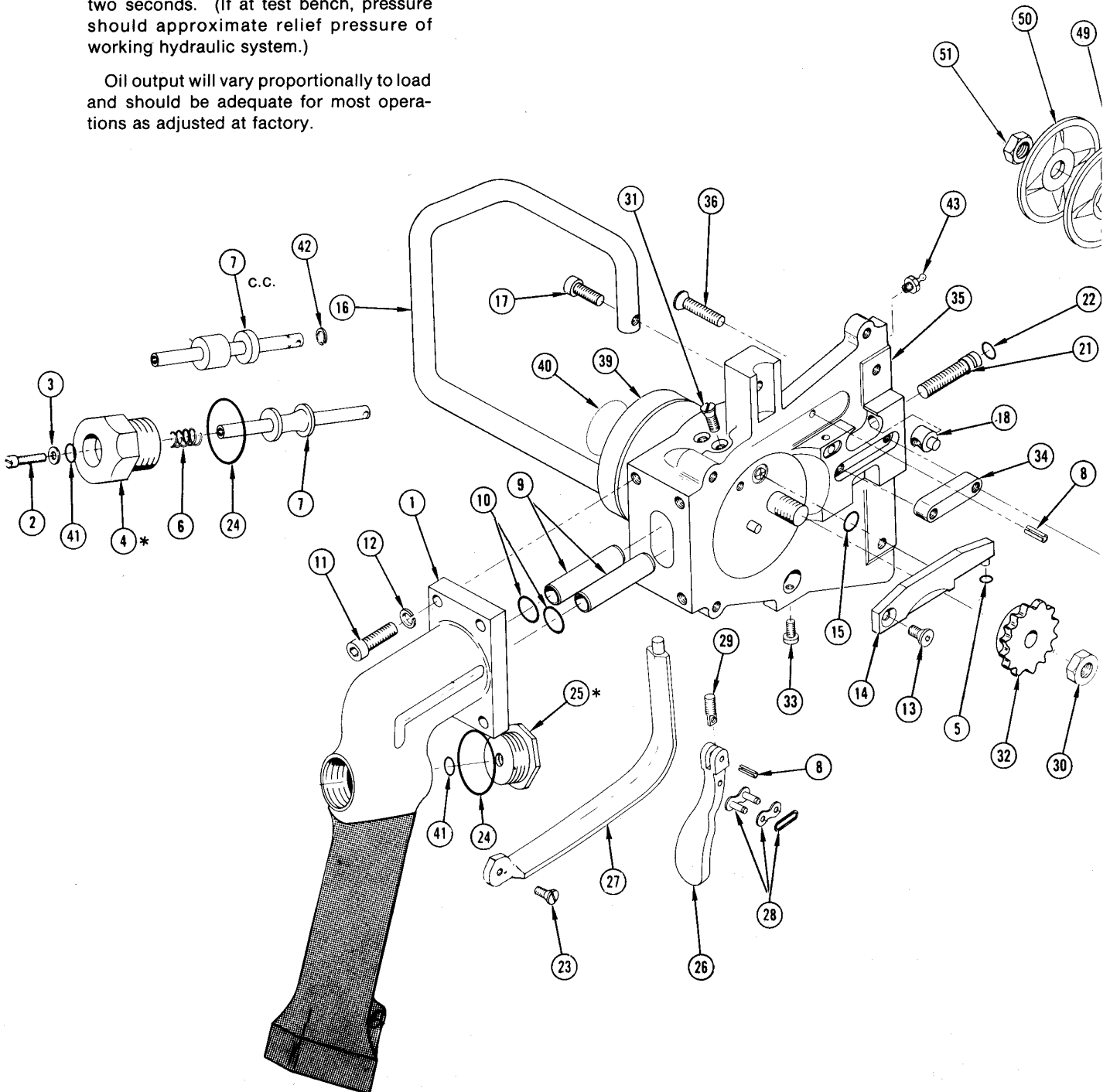
AUTOMATIC OILER ADJUSTMENT

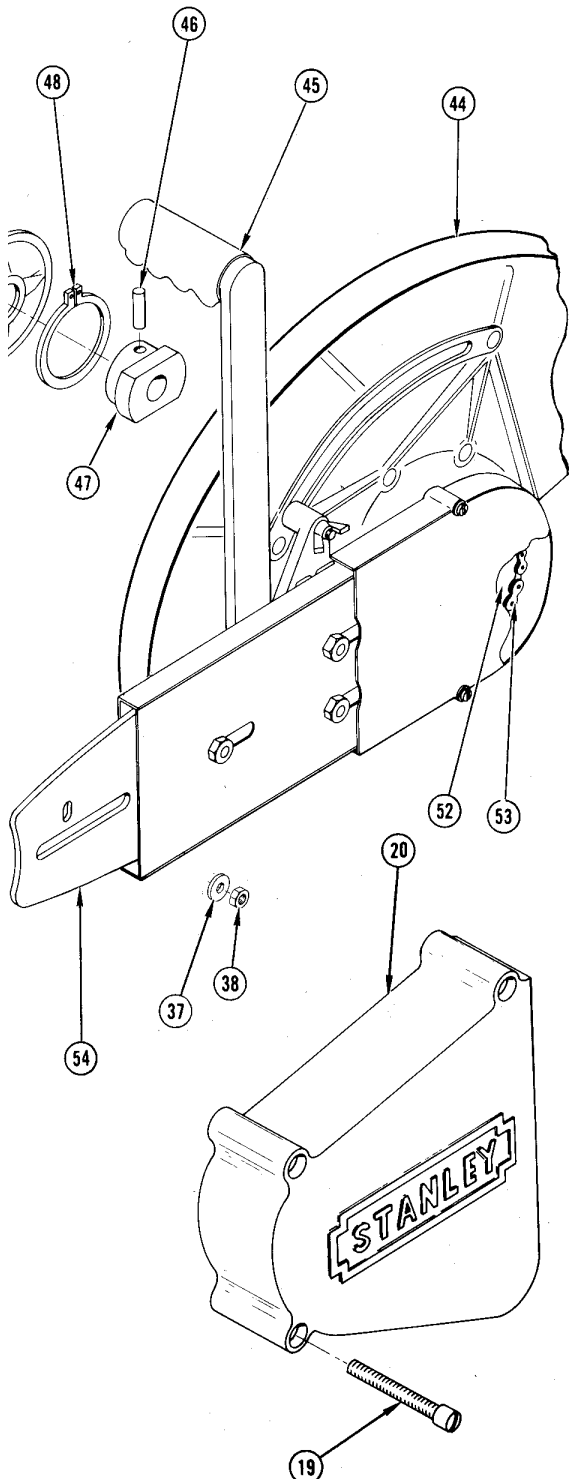
A) Remove chain guide bar, drive chain and chain lube connecting bar (item 14).

B) Put load on the motor by stalling it with a wrench and apply hydraulic pressure.

C) Turn lube regulator screw (item 78) until the oil is flowing about one drop every two seconds. (If at test bench, pressure should approximate relief pressure of working hydraulic system.)

Oil output will vary proportionally to load and should be adequate for most operations as adjusted at factory.

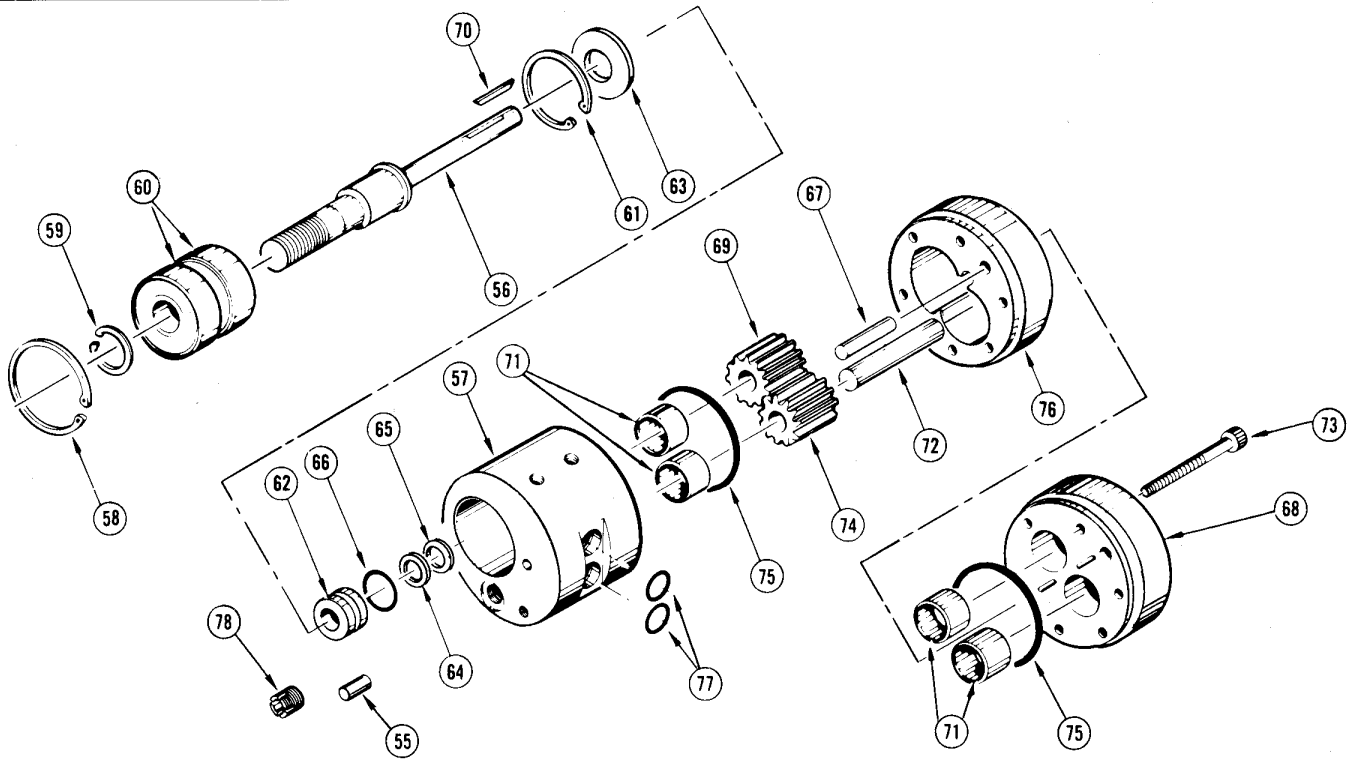




Illus. Index No.	Part No.	Part No.	Qty. Per Unit	PART NAME
	Land	U/W		
1	01959	01959	1	Valve Handle Assembly o.c.
	01961	01961	1	Valve Handle Assembly c.c.
2	00109	00134	1	Machine Screw, 8-32 x 1/4 Fil. Hd.
	00108	01176	1	Stop Washer
4	02290*	00132*	1	Spring Cap Assembly o.c.
	02291*	00237*	1	Spring Cap Assembly c.c.
5	00107	00107	1	O-Ring, 1/8 x 1/4 x 1/16 ⊙
6	00006	00006	1	Spring o.c. ●
	00080	00080	1	Spring c.c. ●
	00005	00131	1	Valve Spool o.c.
7	00078	00236	1	Valve Spool c.c.
8	00072	00875	2	Roll Pin, 1/8 x 3/8 ●
9	00162	00876	2	Oil Tube
10	00018	00018	2	O-Ring, 7/16 x 9/16 x 1/16 ⊙
11	00047	00811	4	Cap Screw, 1/4-20 x 7/8 Hex. Soc. Hd.
12	00046	00093	4	Lock Washer, 1/4 High Collar
13	00102	00877	1	Cap Screw, 10-24 x 1/2 Hex. Soc. Flat Hd.
14	00003	00003	1	Lube Bar Assembly
15	00055	00055	1	O-Ring, 3/8 x 1/2 x 1/16 90 Duro
16	00153	00153	1	Carrying Handle
17	00296	00803	1	Cap Screw, 10-24 x 5/8 Hex. Soc. Hd.
18	00030	00870	1	Bar Adjusting Nut
19	00152	00868	3	Machine Screw, 1/4-20 x 1-1/2 Fil. Hd.
20	00897	00897	1	Sprocket Guard
21	00031	00871	1	Bar Adjusting Screw
22	00026	00026	1	O-Ring, 3/16 x 5/16 x 1/16 90 Duro ⊙
23	00160	00874	1	Machine Screw, 1/4-20 x 3/4 Oval Hd.
24	00074	00074	2	O-Ring, 15/16 x 1-1/16 x 1/16 ⊙
25	00073*	00130*	1	Seal Cap Assembly
26	00070	00898	1	Trigger
27	00159	00159	1	Trigger Guard
28	00113	00615	1	Trigger Link ●
29	00616	00616	1	Trigger Hinge ●
30	00453	00808	1	Nut
31	00027	00869	4	Machine Screw, 1/4-20 x 3/8 Oval Hd.
32	02427	02427	1	Sprocket
33	00154	00789	1	Cap Screw, 10-24 x 1/2 Hex. Soc. Hd.
34	00036	00872	1	Key ●
35	01383	01383	1	Saw Housing Assembly
36	00035	00787	2	Cap Screw, 1/4-20 x 1-1/4 Hex. Soc. Flat Hd.
37	00037	00873	2	Washer
38	00038	00788	2	Nut, 1/4-20 Hex.
39	02978	02979	1	Motor Assembly (See Parts On Back Page)
40	02725	02725	1	Name Tag
41	00112	00173	2	Quad Ring, 1/4 x 3/8 x 1/16 ⊙
		00173	2	Quad Ring, 3/8 x 1/2 x 1/16 ⊙
42	00077	00807	1	Retainer Ring (c.c. only) ●
43		00767	1	Grease Fitting
44	03092	03092	1	Wheel Guard Assembly - 12"
	03093	03093	1	Wheel Guard Assembly - 14"
45	05161	05161	1	Assist Handle
	03091	03091	1	Carb-Cutter Assy. (Incl. Following)
46	03047	03047	1	Roll Pin
47	03094	03094	1	Arbor 1"
48	04035	04035	1	External Retaining Ring
49	01460	01460	1	Inside Collar
50	01479	01479	1	Outside Collar
51	03765	03765	1	Jam Nut, Hex.
52	02485	02485	1	Arbor Sprocket
53	03762	03762	1	Drive Chain
54	03763	03763	1	Chain Guide Bar

● Denotes Part In Repair Kit
 ⊙ Denotes Part In Seal Kit
 * Includes Item No. 41

HYDRAULIC MOTOR ASSEMBLY



Illus. Index No.	Part No.	Part No.	Qty. Per Unit	PART NAME
	Land	U/W		
55	00642	00878	1	Dowel Pin, 3/16 x 1/2
56	00424	00424	1	Motor Shaft
57	03406	03423	1	Front Bearing Retainer (Incl. Item 71)
58	00118	00807	1	Snap Ring, Int. 1-1/4 ●
59	00008	00008	1	Snap Ring, Ext. 19/32 ●
60	00007	00007	2	Bearing ●
61	00011	00233	1	Snap Ring, Int. 1.023 ●
62	00015	00015	1	Seal Liner ⊙
63	02556	02556	1	Washer
64	00014	00014	1	Quad Ring, 1/16 x 5/16 I.D. ⊙
65	00655	00655	1	Washer ⊙
66	00016	00016	1	O-Ring, 9/16 x 11/16 x 1/16 ⊙

Illus. Index No.	Part No.	Part No.	Qty. Per Unit	PART NAME
	Land	U/W		
67	00061	00061	2	Dowel Pin, 3/16 x 1-1/4
68	03399	03399	1	Rear Bearing Retainer (Incl. Item 71)
69	00763	00763	1	Gear w/Keyway
70	00987	00987	1	Key ●
71	00017	00017	4	Needle Bearing
72	00060	00060	1	Idler Shaft
73	00025	00786	6	Cap Screw, 10-24 x 1-3/4 Soc. Hd.
74	00475	00475	1	Idler Gear
75	00020	00020	2	O-Ring, 1/16 x 1-11/16 I.D. ⊙
76	00454	00454	1	Gear Chamber
77	00018	00018	2	O-Ring, 1/16 x 7/16 I.D. ⊙
78	00105	00105	1	Lube Screw

REPAIR AND SEAL KIT DATA

NOTE: Seal Kit Included in Repair Kit

Part No.	Part No.	Qty.	Description
Land	U/W		
Seal Kit Part No. 01123 (Land Models)			
Seal Kit Part No. 01159 (Underwater Models)			
00012	00012	1	O-Ring
00014	00014	1	Quad Ring
00015	00015	1	Seal Liner
00016	00016	1	O-Ring
00018	00018	4	O-Ring
00020	00020	2	O-Ring
00026	00026	1	O-Ring
00074	00074	2	O-Ring
00106	00106	1	O-Ring
00107	00107	1	O-Ring
00112	00173	2	Quad Ring
00655	00655	1	Washer

Part No.	Part No.	Qty.	Description
Land	U/W		
Repair Kit Part No. 01124 (Land Models)			
Repair Kit Part No. 01160 (Underwater Models)			
00006	00006	1	Spring
00007	00007	2	Bearing
00008	00008	1	Retainer Ring
00987	00010	1	Key
00080	00080	1	Spring
00113	00615	1	Trigger Link
00011	00233	1	Retaining Ring
00027	00869	4	Machine Screw
00616	00616	1	Trigger Hinge
00072	00875	2	Roll Pin
00077		1	Retaining Ring
00118	00807	1	Retaining Ring
	00987	1	Key
01123	01159	1	Seal Kit