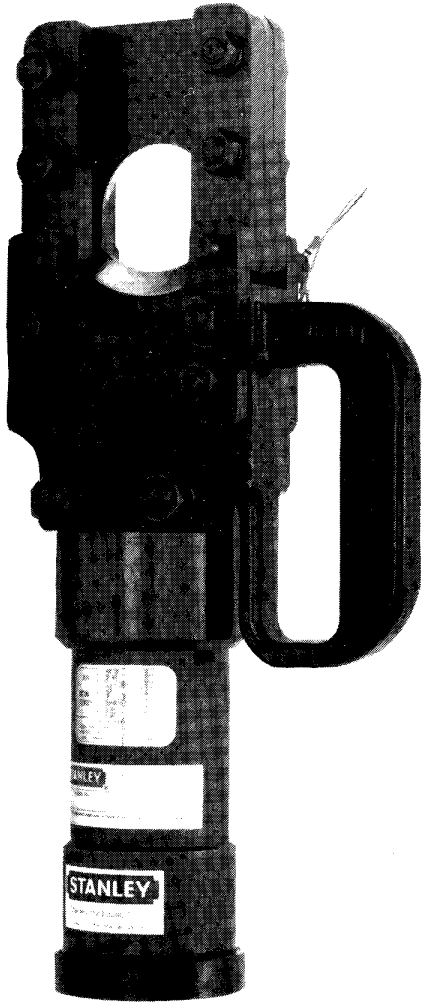


STANLEY[®]

helps you do things right

Stanley Hydraulic Tools

Division of The Stanley Works
3810 S.E. Naef Road
Milwaukie, Oregon 97267
Phone: 503/659-5660
Telex: 360771



PARTS LIST

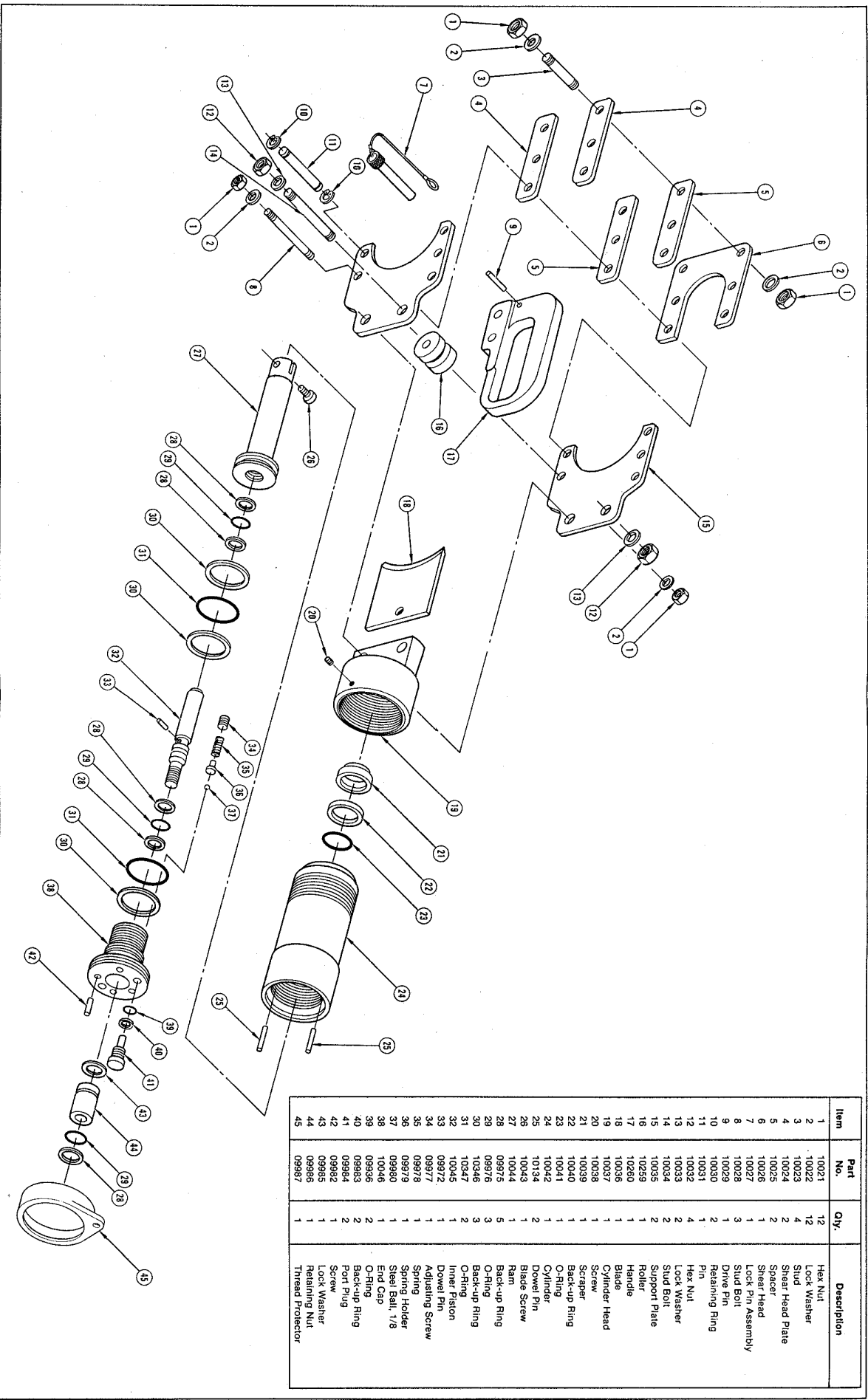
CC55
10,000 PSI

SPECIFICATIONS

Type	Double Acting
Weight	24 lb/10.9 kg
Length	16 in./40.6 cm
Width	3 in./7.6 cm
Porting	Oil Tube Port — 1/4 NPSM Female
Operating Pressure	10,000 psi/704 BAR
Capacity	1-3/16 in./3 cm wire rope 3/4 in./2 cm guy wire 2 in./5.1 cm Stranded Conductor Cu & Al 2 in./5.1 cm ACSR Conductor 3/4 in./1.9 cm reinforcing rod 1-3/8 in./3.5 cm solid Cu Bar 1-1/8 in./2.9 cm solid Al Bar

MODEL CC55
10,000 PSI

DOUBLE ACTING
CUTTER



Item	Part No.	Qty.	Description
1	10021	1	Hex Nut
2	10022	12	Lock Washer
3	10023	4	Stud
4	10024	2	Shear Head Plate
5	10025	2	Spacer
6	10026	1	Lock Pin Assembly
7	10027	1	Stud Bolt
8	10028	3	Drive Pin
9	10030	1	Retaining Ring
10	10031	2	Pin
11	10032	4	Hex Nut
12	10033	13	Lock Washer
13	10034	2	Stud Bolt
14	10035	2	Support Plate
15	10258	1	Roller
16	10259	1	Roller
17	10036	1	Handle
18	10037	1	Cylinder Head
19	10038	1	Screw
20	10039	1	Scraper
21	10040	1	Back-up Ring
22	10041	1	O-Ring
23	10042	1	Cylinder
24	10134	1	Drive Pin
25	10043	2	Blade Screw
26	10044	1	Blade
27	10045	1	Blade Screw
28	09976	5	Back-up Ring
29	09978	1	O-Ring
30	10347	2	Back-up Ring
31	10348	2	O-Ring
32	10046	1	Inner Piston
33	09972	1	Adjusting Screw
34	09977	1	Spring Holder
35	09979	1	Spring
36	09978	1	Spring Holder
37	09980	1	Shear Ball, 1/8
38	10048	1	End Cap
39	09985	2	Back-up Ring
40	09984	2	O-Ring
41	09982	1	Port Plug
42	09985	1	Screw
43	09986	1	Lock Washer
44	09987	1	Retaining Nut
45	09987	1	Thread Protector

STANLEY[®]

helps you do things right

Stanley Hydraulic Tools

Division of The Stanley Works
3810 S.E. Naef Road
Milwaukie, Oregon 97267
Phone: 503/659-5660
Telex: 360771