

**STANLEY**

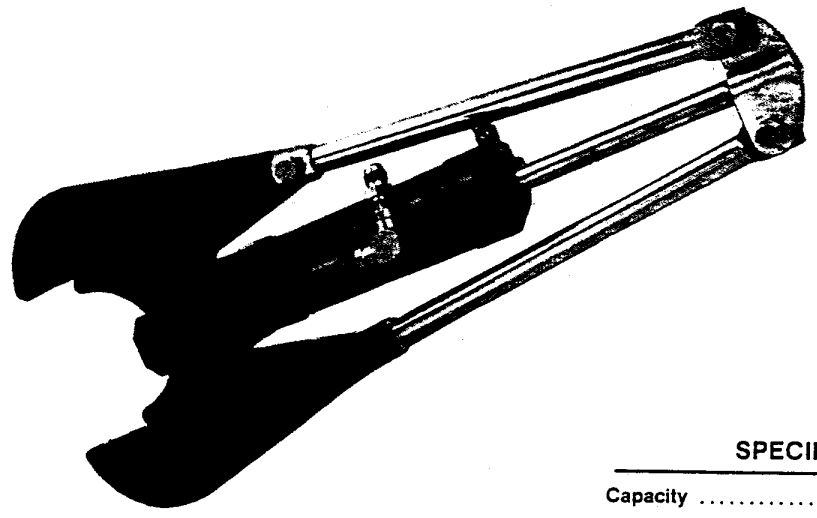
helps you do things right

**Stanley Hydraulic Tools**  
Division of The Stanley Works

3810 S.E. Naef Road  
Milwaukie, Oregon 97267  
Phone: 503/659-5660  
Telex: 360771

# PARTS LIST

**CC15**



### SPECIFICATIONS

Capacity .....	4 in CUT/10 cm CUT
Weight .....	14 lb/6 kg
Length .....	24 in/61 cm
Width .....	9 in/ 23 cm
Flow Range .....	7-9 gpm 26-34 lpm
Pressure .....	2000 psi/140 bar
Porting .....	3/8 NPT

**MODEL CC15**

**CABLE  
CUTTER**

Repair Kit 10870

Part No.	Qty.	Description
07543	2	Roll Pin
07545	2	Capscrew
07585	1	Locknut
07573	1	Roll Pin
00072	1	Roll Pin
08611	1	Pipe Plug
08613	1	Retaining Ring
08614	1	Retaining Ring
08620	1	Bolt
08621	1	Spring

Seal Kit No. 10871

Part No.	Qty.	Description
03252	2	O-Ring
04911	1	O-Ring
07549	2	O-Ring
08604	1	O-Ring
08605	1	O-Ring
08606	1	O-Ring
08607	1	Back-up Ring
08608	1	Seal
08609	1	Rod Wiper
08610	2	O-Ring

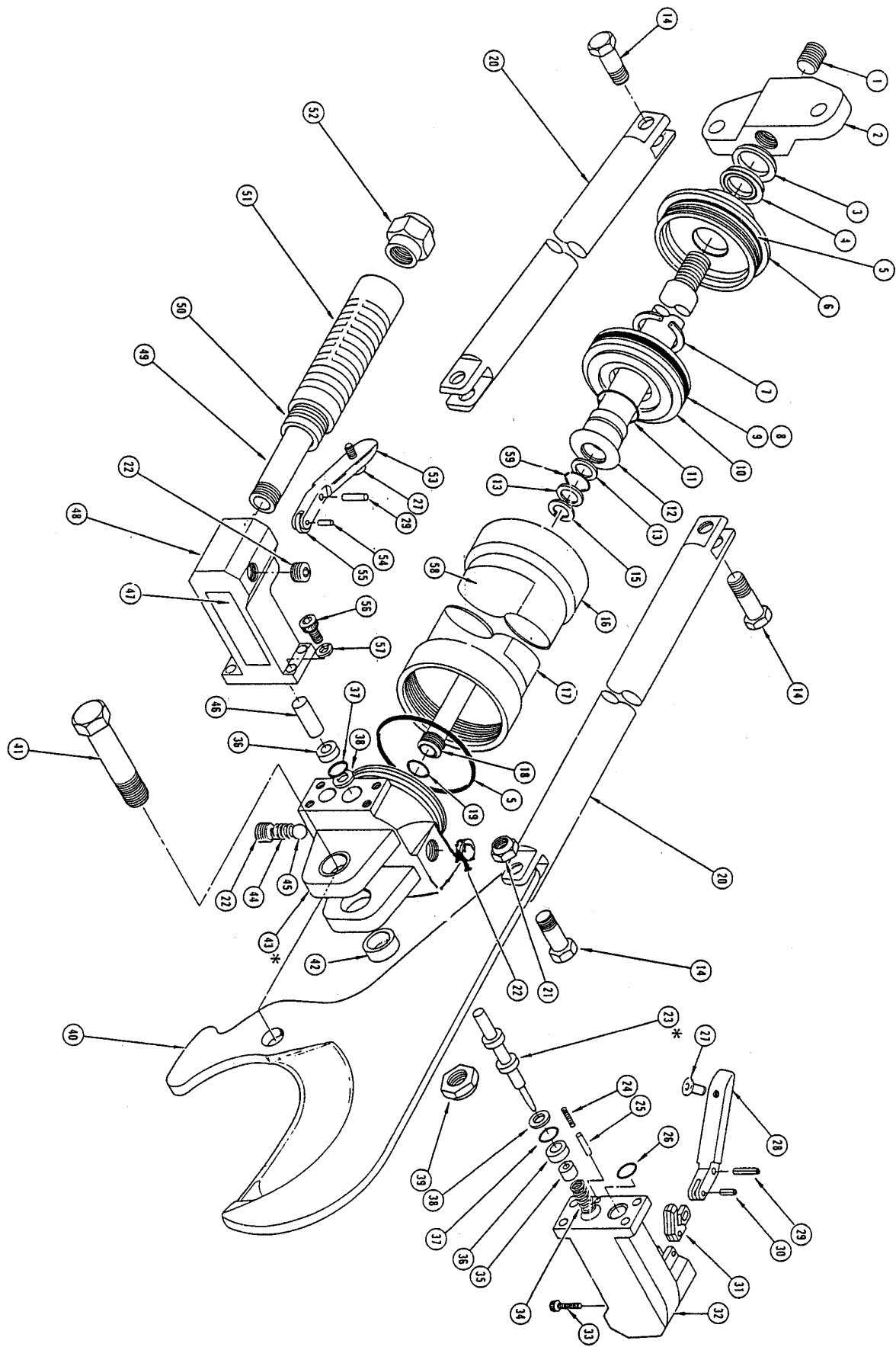
Illus. Index No.	Part No.	Qty. Per Units	PART NAME
1	08622	1	Lockscrew
2	08596	1	Arm Pivot
3	08609	1	Rod Wiper - Parker 959-7, 940-7 ⊙
4	08608	1	Seal-Parker 12500875 ⊙
5	08610	2	O-Ring 2-11/16 x 2-7/8 x 3/32 ⊙
6	08595	1	Cylinder End Cap
7	08614	1	Retaining Ring 1-1/16 Ext. •
8	08606	1	O-Ring 2-1/2 x 2-3/4 x 1/8 ⊙
9	08607	1	Back-Up Ring ⊙
10	08598	1	Piston - Open Center
	08599	1	Piston - Closed Center
11	08605	1	O-Ring 1-1/16 x 1-1/4 x 3/32 ⊙
12	08597	1	Piston Rod
13	08600	2	Washer
14	08620	4	Aircraft Bolt AN7-10A 7/16-20 x 1-3/32 Hex Head •
15	08613	1	Retaining Ring 3/4 Int. Inverted •
16	08591	1	Cylinder
17	08623	1	Label-Cable Guide Locations
18	08601	1	Center Tube Weldment
19	04911	1	O-Ring 1/2 x 5/8 x 1/16 ⊙
20	08619	2	Connecting Link
21	07585	4	Jam Nut 7/16-20 Nylock •
22	08611	4	Pipe Plug - 3/8 NPT •
23	08603	1	Valve Spool *
24	07565	1	Compression Spring
25	07560	1	Safety Rod
26	03252	2	O-Ring 7/16 x 9/16 x 1/16 ⊙
27	07550	2	Capscrew 10-24 x 3/4 Hec Soc. Button Head
28	07555	1	Safety Trigger
29	07543	2	Roll Pin 1/8 x 3/4 •
30	00072	1	Roll Pin 1/8 x 3/8 •
31	08602	1	Safety Toggle
32	08593	1	Safety Trigger Housing
33	07566	1	Capscrew 6-32 x 3/4 Hex Soc. Head
34	08621	1	Compression Spring •
35	08585	1	Spring Cup
36	07548	2	Valve Plug
37	07549	2	O-Ring 5/16 x 9/16 x 1/8 ⊙
38	07547	2	Brass Washer
39	07580	1	Jam Nut 5/8 - 18 Nylock
40	10842	2	Blade
41	10856	1	Capscrew 5/8-18 x 3 Hex Head
42	07570	2	Bearing - Oil-Lite 5/8 x 3/4 x 1/2
43	08592	1	Valve Housing *
44	08612	1	Compression Spring
45	01603	1	Steel Ball 1/2 Dia.
46	08615	1	Spool Push Rod
47	03786	1	GPM Sticker
48	08594	1	Control Trigger Housing
49	08616	2	Pipe Nipple 3/8 NPT x 6-1/2 LG
50	07561	2	Handle
51	07546	2	Handle Grip
52	08618	2	Connector 3/8 NPT
53	07554	1	Control Trigger
54	07573	1	Roll Pin 3/32 x 3/8 •
55	07557	1	Roller
56	07545	8	Capscrew 1/4-20 x 5/8 Hec. Soc. Head •
57	00046	8	Lockwasher 1/4
58	05152	1	Stanley Sticker
59	08604	1	O-Ring 1/2 x 3/4 x 1/8 ⊙

• Denotes Part In Repair Kit

⊙ Denotes Part In Seal Kit

\* Must Be Purchased As A Matched Set

NOTE: Use part number and part name when ordering.



**STANLEY**®

helps you do things right

**Stanley Hydraulic Tools**

Division of The Stanley Works

3810 S.E. Naef Road

Milwaukie, Oregon 97267

Phone: 503/659-5660

Telex: 360771

Fax: 503/652-1780