

STANLEY[®]

helps you do things right

Stanley Hydraulic Tools

Division of The Stanley Works
3810 S.E. Naef Road
Milwaukie, Oregon 97267
Phone: 503/659-5660
Telex: 360771

PARTS LIST



CC05
10,000 PSI

SPECIFICATIONS

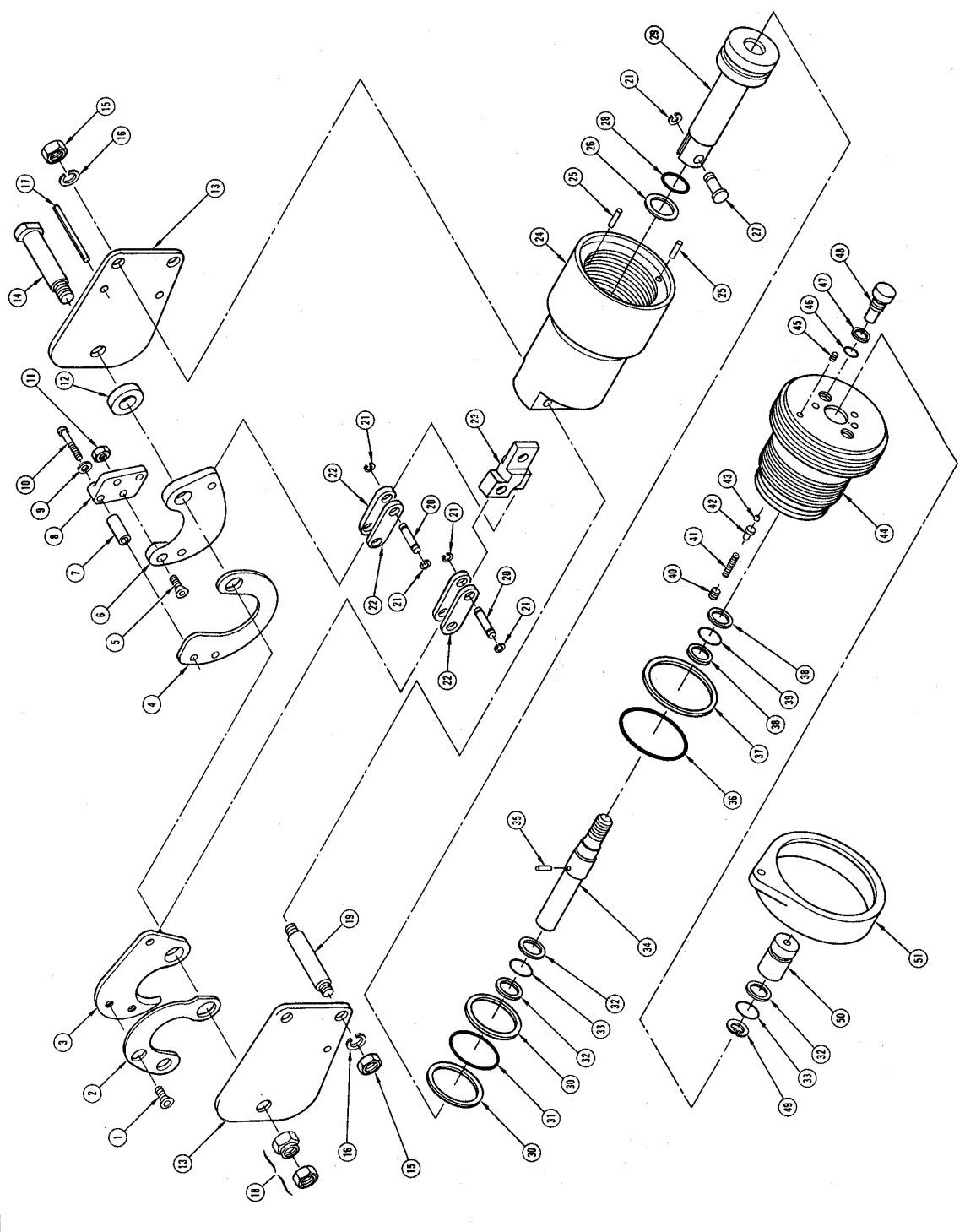
Type Double Acting
Weight 11 lb./5 kg.
Length 10.6 in./27 cm
Width 3 in./7.6 cm
Porting Oil Tube Port - 1/4 NPSM Female
Operating Pressure 10,000 psi/704 Bar
Capacity 3/4 in./19 mm ASCR Conductor
1.1 in./23 mm Stranded Conductor Cu & Al

MODEL CC05
10,000 PSI

**CABLE
CUTTER**

Illus. Index No.	Part No.	Qty. Per Unit	PART NAME
1	10417	2	Screw
2	10418	1	Blade Guide
3	10419	1	Blade
4	10420	1	Blade Guide
5	10421	2	Screw
6	10416	1	Blade
7	10422	2	Spacer
8	10423	1	Guide Support
9	09912	2	Lockwasher
10	10011	2	Screw
11	09938	2	Hex Nut
12	10424	1	Collar
13	10425	2	Support Plate
14	10426	1	Shoulder Bolt
15	10427	4	Hex Nut
16	09949	4	Lock Washer
17	10428	2	Drive Pin
18	10429	2	Nut
19	10430	2	Stud Bolt
20	10431	4	Pin
21	10432	9	Retaining Ring
22	10433	4	Link
23	10434	4	Link Head
24	10435	1	Cylinder
25	09963	2	Dowel Pin
26	09967	1	Back-up Ring
27	10436	1	Pivot Pin
28	09968	1	O-Ring
29	10438	1	Ram
30	10439	2	Back-up Ring
31	10437	1	O-Ring
32	10440	1	Back-up Ring
33	10441	2	O-Ring
34	09972	1	Inner Piston
35	09968	1	Dowel Pin
36	09967	1	O-Ring
37	09967	1	Back-up Ring
38	09966	3	Back-up Ring
39	09976	2	O-Ring
40	09977	1	Adjusting Screw
41	09978	1	Spring
42	09979	1	Spring Holder
43	09980	1	Bail, 1/8
44	09981	1	End Cap
45	09982	1	O-Ring
46	09936	2	Back-up Ring
47	09983	2	Port Plug
48	09984	1	Lock Washer
49	09985	1	Retaining Nut
50	09986	1	Thread Protector
51	09987	1	Thread Protector

NOTE: Use Part Number and Part Name When Ordering.



STANLEY®

helps you do things right

Stanley Hydraulic Tools

Division of The Stanley Works

3810 S.E. Naef Road
Milwaukie, Oregon 97267
Phone: 503/659-5660
Telex: 360771