

STANLEY

helps you do things right

Stanley Hydraulic Tools

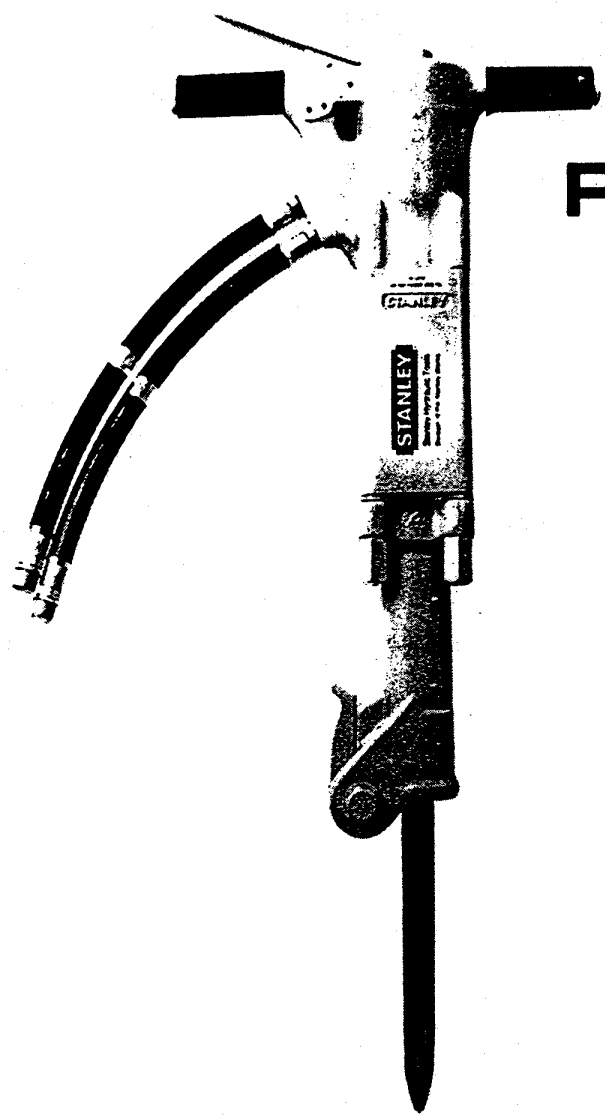
Division of The Stanley Works

3810 S.E. Naef Road

Milwaukie, Oregon 97222

Phone: 503/659-5660

Telex: 360771



PARTS LIST

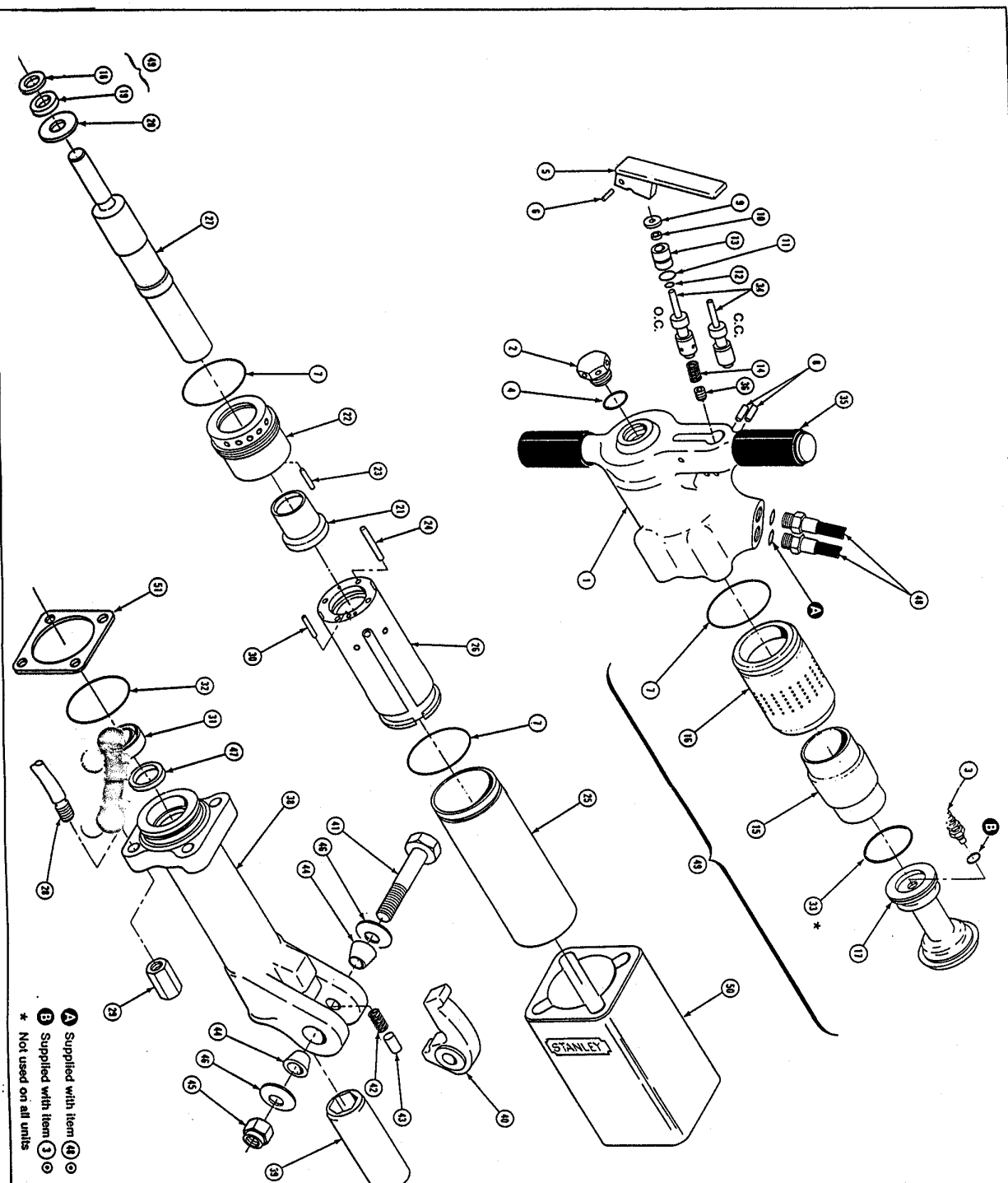
BR87A

SPECIFICATIONS

Weight	80 lbs/35.7 kg
Pressure Range	1500-2000 psi/105-140 BAR
Flow Range	7-9 gpm/26-34 lpm
Optimum Flow	8 gpm/30 lpm
Porting	1/2 pipe, hose ends
Length	27 in/68 cm
Width	16 in/40 cm
System Type	o.c. or c.c.

MODEL BR87A

**HYDRAULIC
BREAKER**



- Ⓐ Supplied with item Ⓓ
- Ⓑ Supplied with item Ⓒ
- Ⓒ Not used on all units

Illus. Index No.	Part No.	Qty. Per Unit	PART NAME
1	06185	1	Handle Assy - Incl Item 35
2	04050	1	Valve Cap Assy
3	04051	1	Charging Valve
4	04052	1	O-Ring, 1.047 x 1.279 x .116 90D. Ⓞ
5	04053	1	Trigger
6	00844	1	Spiral Pin
7	04054	1	Rod Pin, 2-7/8 x 3-1/8 x 1/8 90D. Ⓞ
8	04055	2	Washer
9	04056	2	Washer
10	04057	1	Spring
11	01362	1	O-Ring, 1-1/16 x 7/8 x 3/82 Ⓞ
12	01362	1	O-Ring, 1-1/16 x 7/8 x 3/82 Ⓞ
13	04058	1	Bushing
14	04059	1	Spring
15	04060	1	Accumulator Diaphragm
16	04061	1	Accumulator Cylinder
17	04062	1	Accumulator Chamber
18	04063	1	Cup Seal
19	04064	1	Washer
20	04065	1	Washer
21	04066	1	Automatic Valve
22	04066	1	Automatic Valve Body
23	04571	2	Push Pin, 3/16 x 1-1/4
24	04067	4	Flow Sleeve Tube
25	04068	1	Flow Sleeve
26	04069	1	Flow Sleeve
27	04070	1	Flow Sleeve
28	04071	4	Flow Sleeve
29	02985	4	Slide Rod Nut
30	04072	1	Flow Sleeve
31	04073	1	Cup Seal
32	05641	1	O-Ring, 2-3/8 x 2-7/8 x 1/8 90D. Ⓞ
33	05641	1	O-Ring, 2-3/8 x 2-7/8 x 1/8 90D. Ⓞ
34	04077	1	Valve Spool, o.c.
35	02494	2	Valve Spool, o.c.
36	04078	1	Handle Grip
37	04079	1	Flow Sleeve
38	04080	1	Flow Sleeve
39	04081	1	Flow Sleeve
40	01837	1	Flow Sleeve
41	04983	1	Flow Sleeve
42	01744	1	Flow Sleeve
43	01745	1	Flow Sleeve
44	01289	1	Flow Sleeve
45	04984	1	Flow Sleeve
46	04985	1	Flow Sleeve
47	01832	1	Flow Sleeve
48	05657	1	Flow Sleeve
49	05265	1	Flow Sleeve
50	05265	1	Flow Sleeve
51	05305	1	Flow Sleeve

Ⓞ Denotes Part in Seal Kit

Note: Use Part Number and Part Name when ordering.

Part No.	Qty.	Description
04052	1	O-Ring
04054	3	O-Ring
04056	1	Rod Wiper
00293	1	O-Ring
01362	1	O-Ring
04053	1	Cup Seal
04072	1	Cup Seal
04073	1	Rod Wiper
01995	2	O-Ring
05641	1	O-Ring
00676	1	O-Ring

SEAL KIT DATA

ACCUMULATOR CHARGING INSTRUCTIONS

TO CHECK OR CHARGE YOUR ACCUMULATOR YOU NEED:

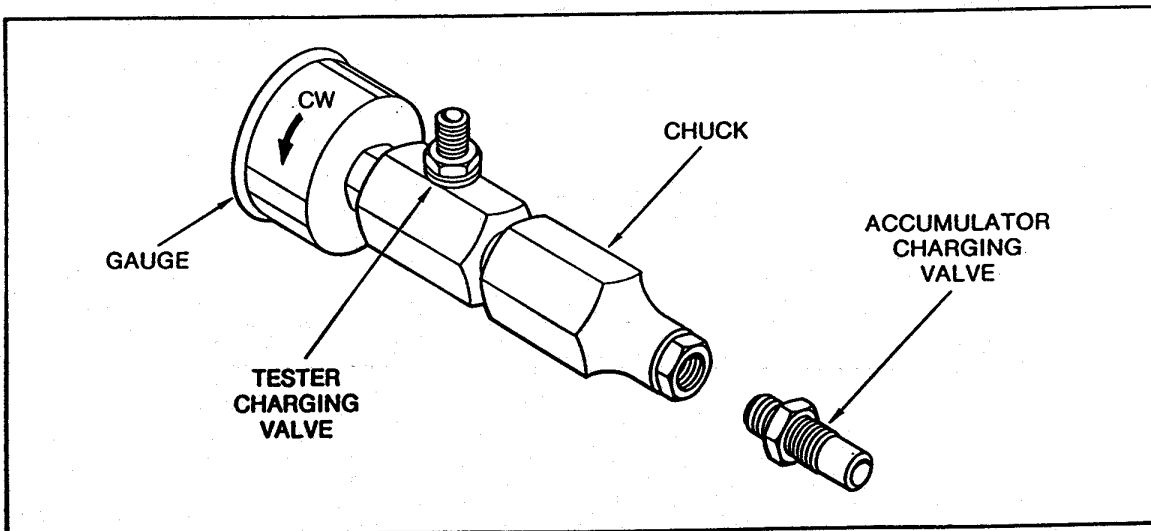
1. The Stanley No. 02835 accumulator tester was developed for use with Stanley Tools for testing and can be used as an extension during charging.
2. A charging assembly including a regulator, hose and fittings, Stanley No. 06545.
3. A NITROGEN bottle with an 800 psi minimum charge.

TO CHECK ACCUMULATOR PRESSURE (Using Stanley Tester):

1. Holding the chuck end of tester, turn the gauge counter clockwise until reaching the stop, to ensure the valve is completely retracted.
2. Loosen 5/8 hex nut on breaker charging valve 1-1/2 turns.
3. Thread tester on to charging valve of accumulator. (Do not advance gauge end into chuck end, turn as a unit).
4. Seat the chuck to the charging valve of the accumulator (hand tighten only).
5. Advance the valve by turning the gauge end clockwise until a pressure is read on the gauge. (Charge pressure should be 500-700 psi.)
6. Reverse above procedure.

TO CHARGE ACCUMULATOR (Using Stanley Tester):

1. Follow above procedure through Item 4 (Item 5 optional).
2. Attach chuck from Nitrogen supply to accumulator tester or directly to breaker charge valve and charge accumulator to 600 psi. (NOTE: It may be required to adjust to 650-700 psi to overcome pressure drop thru charging valve.)
3. Reverse above procedure.



STANLEY

Stanley Hydraulic Tools
Division of The Stanley Works
3810 S.E. Naef Road
Milwaukie, Oregon 97222
Phone: 503/659-5660