

**STANLEY**  
helps you do things right

**Stanley Hydraulic Tools**  
Division of The Stanley Works  
13770 S.E. Ambler Road  
Clackamas, Oregon 97015  
Phone: 503/659-5660

# PARTS LIST

**AT13**

## SPECIFICATIONS

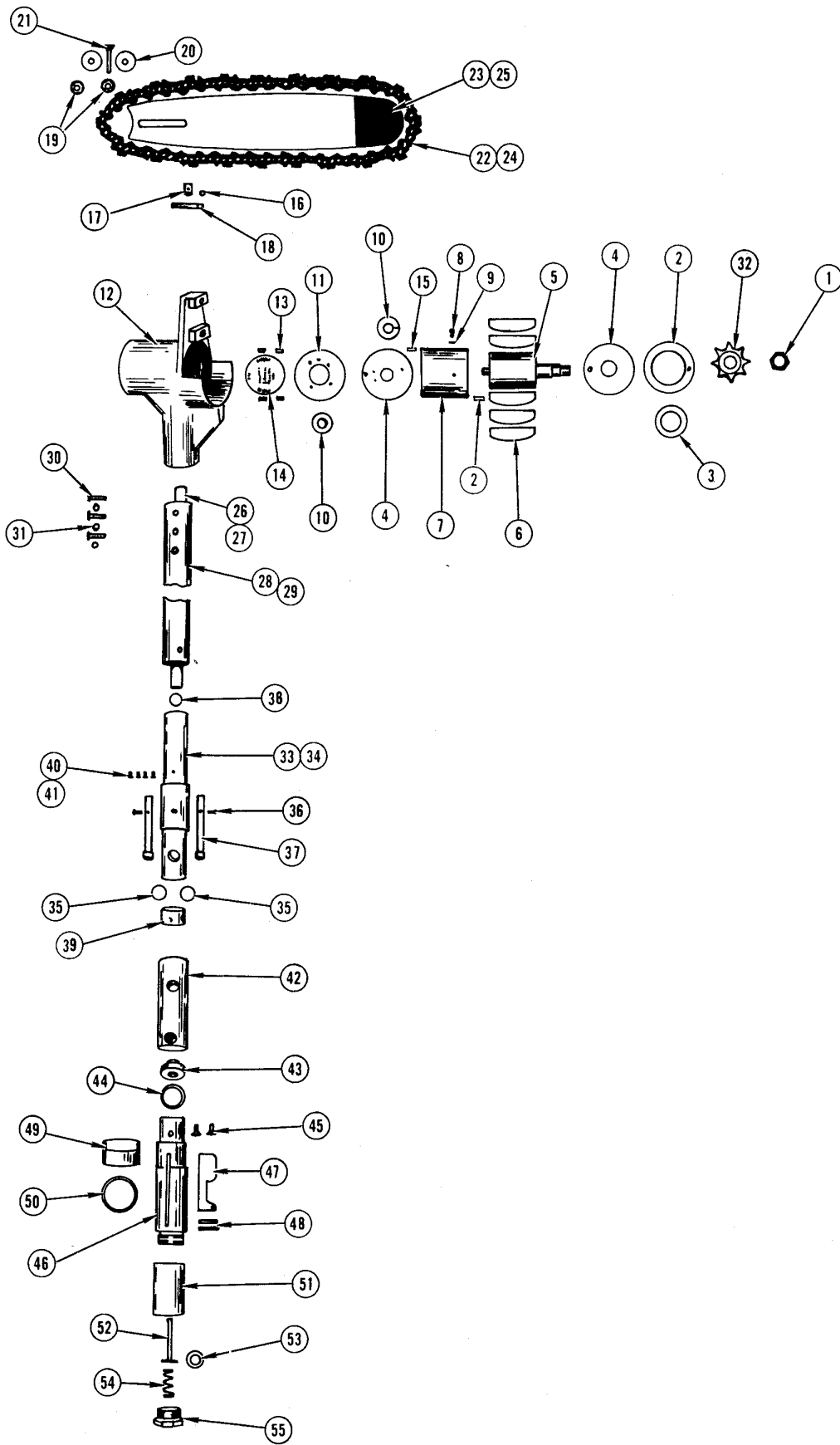
<b>Weight</b> .....	8.5 lbs/3.86 kg. *
.....	9.5 lbs/4.31 kg. **
<b>Porting</b> .....	3/8 inch

\*Aluminum Models  
\*\*Epoxy Models

U.S. PATENT NO. 2814110

**MODEL AT13**

**AIR POWERED  
CHAIN SAW**



Illus. Index No.	Part No.	Qty. Per Unit	PART NAME
	00643		<b>Motor Assembly</b>
1	00453	1	Rotor Nut
2	00334	1	Front Bearing Retainer
3	00335	1	Front Bearing
4	00336	2	End Plates, Spring Bronze
5	00337	1	Rotor
6	00338	5	Sliding Vanes
7	00339	1	Rotor Cage
8	00109	1	Screw 8-32 x 1/4 Fil Hd.
9	00341	1	Lock Washer, #8
10	00342	1	Rear Bearing
11	00343	1	Rear Bearing Retainer
12	00386	1	Saw Housing
13	00344	4	Screw, 6-32 x 1/4 Soc. Hd.
14	00428	1	Nameplate
15	00072	1	Roll Pin, 1/8 x 3/8
16	00026	1	O-Ring, 3/16 x 5/16 x 1/16
17	00030	1	Adjustment Nut
18	00031	1	Adjustment Screw
19	00429	2	Saw Bar Nut
20	00430	2	Saw Bar Lock Washer
21	00431	2	Saw Bar Screw, 5/16-18 x 1 1/4
22	02036	1	Saw Chain, 12"
23	00040	1	Saw Bar 12"
24	02037		Saw Chain, 15" (optional)
25	00156		Saw Bar, 15" (optional)
26	00742	1	Aluminum Air Tube, 3 ft.
26	00348	1	Aluminum Air Tube, 5 ft.
27	00349	1	Epoxy Air Tube, 5 ft.
28	02186	1	Saw Tube Assembly-3 ft. Aluminum
28	01486	1	Saw Tube Assembly-5 ft. Aluminum
29	01487	1	Saw Tube Assembly-5 ft. Epoxy

Illus. Index No.	Part No.	Qty. Per Unit	PART NAME
30	00033	3	Screw, 10-24 x 7/16 Pan Hd.
31	00032	3	Lock Washer, #10
32	00928	1	Sprocket
	00352	1	<b>Male Coupler Assembly for Aluminum</b>
	00353	1	<b>Male Coupler Assembly for Epoxy</b>
33	00123	1	Coupling Body, Aluminum Body
34	00355	1	Coupling Body, Epoxy Model
35	00354	2	O-Ring 1/2 x 11/16 x 3/32
36	00358	2	Spring Lock Button Rivet
37	00359	2	Spring Lock Button
38	00360	1	O-Ring 7/16 x 5/8 x 3/32
39	00361	1	Double O-Ring Insert
40	00356	4	Screw, 6-32 x 3/16-Aluminum model
41	00357	4	Screw, 6-32 x 3/16-Epoxy Model
	00365	1	<b>Valve Assembly</b>
42	00366	1	Outer Tube Connector
43	00367	1	Air Tube Connector
44	00368	1	O-Ring, 3/4 x 1 x 1/8
45	0007	2	Screw, 1/4-20 x 3/8
46	00369	1	Valve Body, Upper
47	00370	1	Valve Trigger
48	00371	2	Trigger Hinge & Lock Pin
49	00372	1	Valve Safety Lock
50	00373	1	O-Ring, 1 3/16 x 1 7/16 x 1/8
51	00374	1	Valve Body, Lower
52	00375	1	Valve Stem Assembly
53	00376	1	Valve Seat
54	00006	1	Valve Spring
55	00378	1	Hose Connector
N.I.	00216	1	Spanner Wrench

## REPAIR AND SEAL KIT DATA

Part No.	Qty.	Description
<b>Repair Kit Part No. 03185</b>		
00342	1	Bearing
00335	1	Bearing
00336	2	Bronze Plates
00338	5	Vanes
00103	1	Snap Ring
00375	1	Valve Stem Assy.

Part No.	Qty.	Description
<b>Seal Kit Part No. 03184</b>		
00376	1	Seat
00373	2	O-Ring
00368	1	O-Ring
00354	3	O-Ring
00360	2	O-Ring

NOTE: Seal kit included in repair kit.

**STANLEY**<sup>®</sup>  
helps you do things right

**Stanley Hydraulic Tools**  
Division of The Stanley Works

13770 S.E. Ambler Road  
Clackamas, Oregon 97015  
Phone: 503/659-5660