

# 38632 O.C./C.C. Inline Control Valve

## Operating Instructions & Parts List

The 38632 Inline Control Valve is designed to provide the ON/OFF functions for a hydraulic tool connected to either an OPEN CENTER (O.C.) hydraulic system or a CLOSED CENTER (C.C.) hydraulic system. The valve is to be used with tools which do not have an ON/OFF trigger control. The 38632 Control Valve can be used on hydraulic systems producing up to 10 gpm/38 lpm with a maximum relief valve setting of 2500 psi/172 bar. The valve ports are -8 SAE (3/4-16 thread) o-ring ports.

### Setting for Open Center (O.C.) or Closed Center (C.C.)

Set the valve to O.C. or C.C. before connecting it to the hydraulic system. To set the valve for open center operation, use a straight blade screw driver to turn the selector screw counter clockwise until it stops. To set the valve for closed center operation, turn the selector screw clockwise until it stops.

### CAUTION

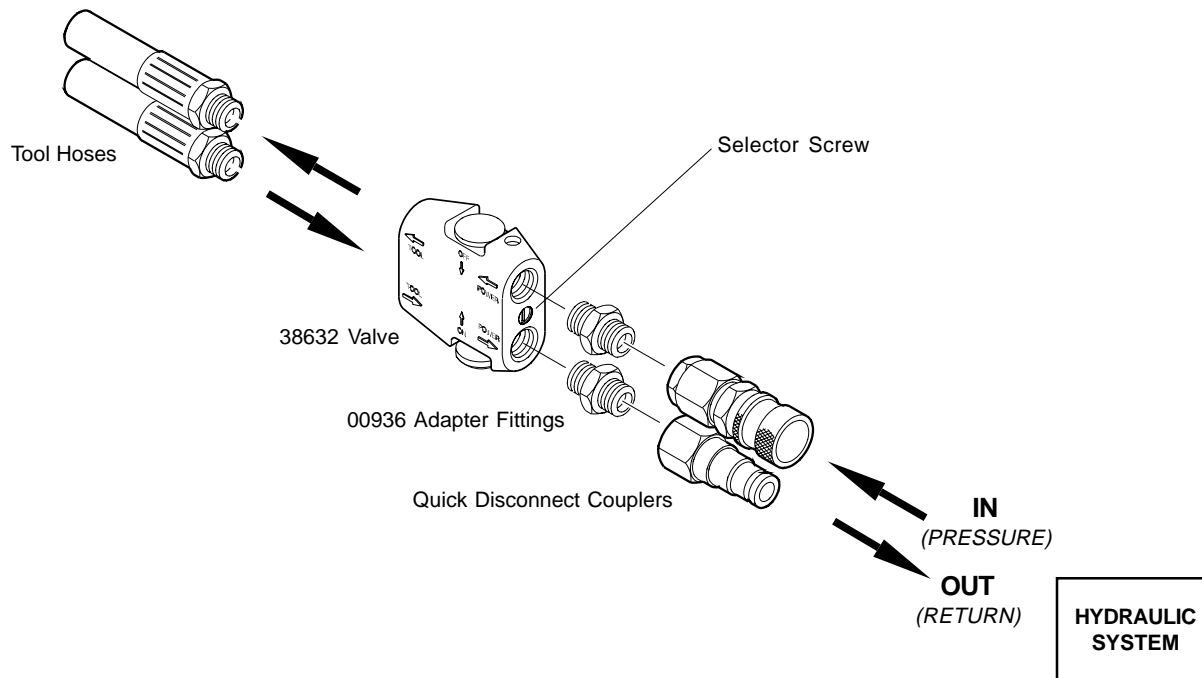
Be sure you know if you have an OPEN CENTER (O.C.) OR CLOSED CENTER (C.C.) hydraulic system, DO NOT attempt to install or operate the 38632 Valve until you do. Incorrect installation or operation of the valve can result in seal failures in the tool, cause excessive heat in the hydraulic system, and may damage the tool and hydraulic system. Understand which type of hydraulic system you are using before installing or operating this valve.

### Installing The Valve

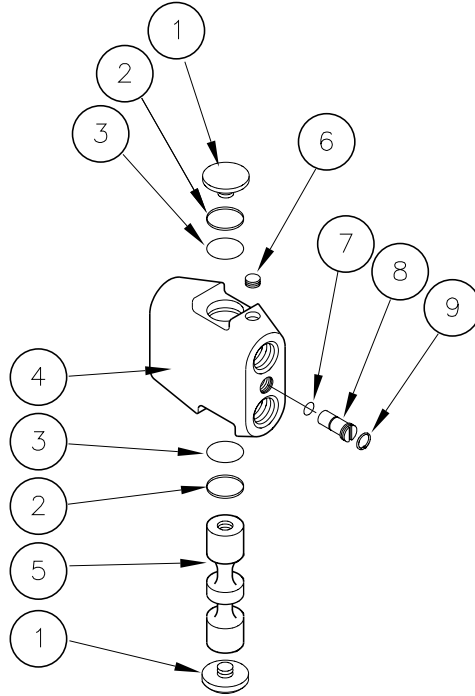
Connect the valve to the hydraulic system as shown in the illustration.

### Operating The Valve

Connect the valve to the tool using the illustration below as a guide. Make sure the valve spool on the valve is pushed **OFF** before connecting the valve to the hydraulic system. Make sure the hydraulic system is **OFF** before connecting the valve to the hydraulic system. Connect the valve to the hydraulic system. Turn **ON** the hydraulic system. Place the tool to be operated in its operating position. Push the valve spool **ON** to begin operating the tool. Push the valve spool **OFF** to stop operating the tool. Turn the hydraulic system **OFF** before disconnecting the valve.



## 38632 O.C./C.C. Control Valve Parts List



Item	P/N	Qty	Description
1	01003	2	ON/OFF VALVE BUTTON
2	13568	2	BACK-UP RING
3	13567	2	O-RING
4	38629	1	VALVE BODY
5	38631	1	VALVE SPOOL
6	----	1	EXPANDER PLUG (not serviceable) (Incl'd w/item 4)
7	00026	1	O-RING
8	10536	1	SELECTOR SCREW
9	16070	1	RETAINING RING