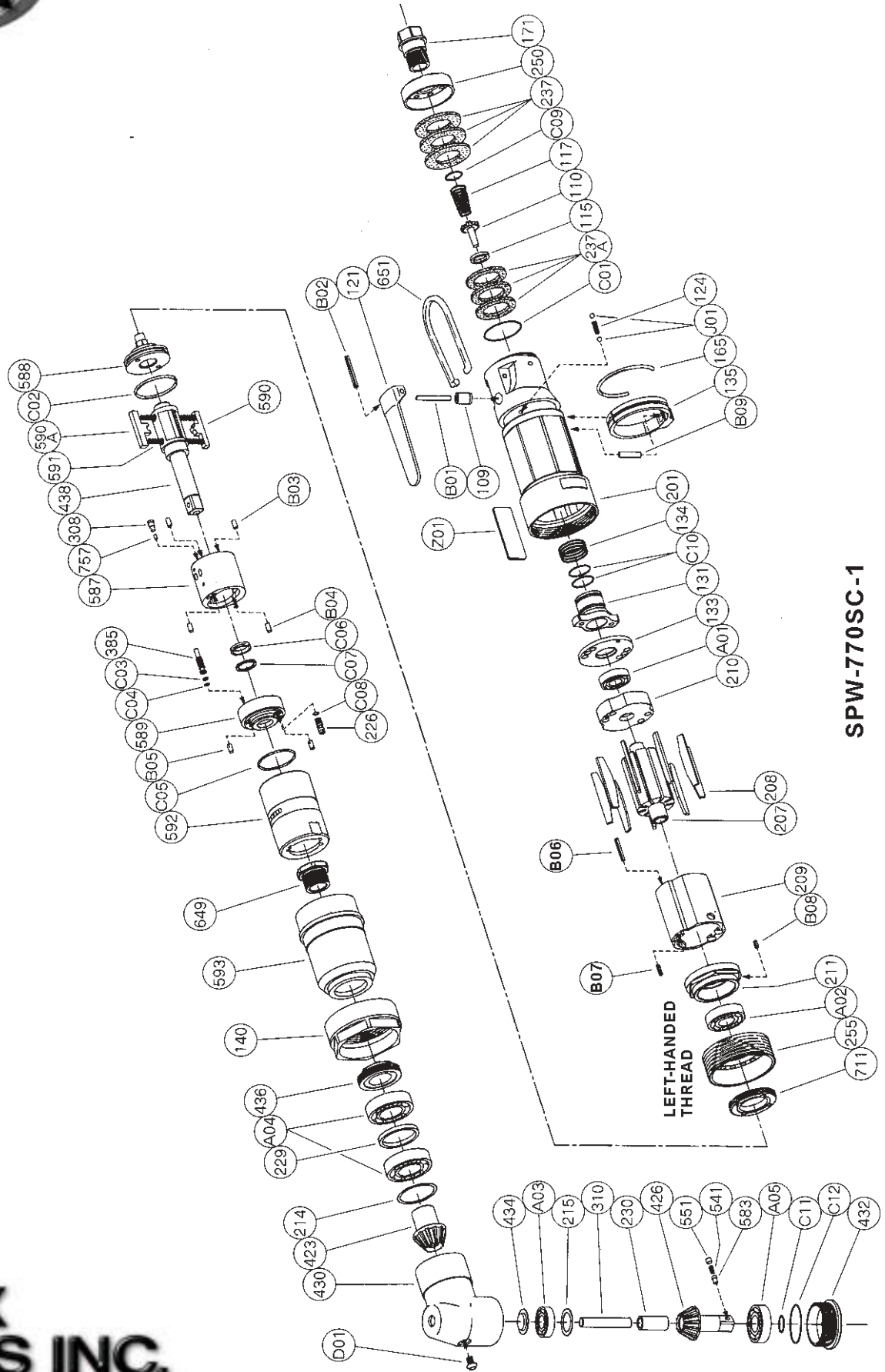




PARTS LIST FOR PULSE TOOL SPW-770SC-1 ANGLE 1/2" SQ DRIVE

Form Z628
Date 4-00/A
Page 1 of 2



SPW-770SC-1

**SIoux
TOOLS INC.**

2901 FLOYD BOULEVARD ■ PO BOX 507 ■ SIOUX CITY, IOWA 51102-0507 USA ■

Printed In U.S.A.



PARTS LIST FOR PULSE TOOL SPW-770SC-1 ANGLE 1/2" SQ DRIVE

Fig. No.	Part No.	Description
	601558	Ass'y Housing (SPW-770SC-1)
Includes the following parts:		
109	601484	Throttle Valve Bushing
110	601485	Throttle Valve
115	601486	Throttle Valve Sheet
117	601020	Throttle Valve Spring
121	601422	Throttle Valve Lever
171	601490	Inlet Joint (PT)
171	601491	Inlet Joint (NPT)
201	601566	Housing
237	601497	Muffler Pad (3)*
237A	601570	Muffler Pad (3)*
250	601498	Exhaust Cover
B01	601515	Needle Roller
B02	601331	Spring Pin
C01	601426	"O" Ring
<hr/>		
	601524	Ass'y Oil Cylinder (SPW-770SC-1)
Includes the following parts:		
226	601135	Oil Plug
308	601530	Spacer
385	601531	Adjusting Screw
438	601534	Spindle
587	601136	Oil Cylinder
588	601535	Oil Cylinder Upper Plate
589	601536	Oil Cylinder Lower Plate
590	601137	Spindle Blade
590A	601138	Spindle Blade
591	601139	Blade Spring (2)*
592	601537	Cylinder Case
711	601540	Cylinder Cover
757	601141	Needle
B03	601039	Needle Roller (2)*
B04	601039	Needle Roller (2)*
B05	601023	Grooved Pin (2)*
C02	601065	"O" Ring
C03	601062	"O" Ring
C04	601015	Back Up Ring
C05	601045	"O" Ring
C06	601046	X Ring
C07	601011	Back Up Ring
C08	601058	"O" Ring

Fig. No.	Part No.	Description
Common Parts:		
124	601314	Knock Spring
131	601560	Reverse Valve
133	601561	Reverse Valve Sheet
134	601562	Reverse Valve Spring
135	601563	Reverse Valve Lever
140	601564	Cup Nut

Fig. No.	Part No.	Description
165	601565	Stop Ring
207	601527	Rotor
208	601528	Rotor Blade (Set of 9)
209	601567	Cylinder (Includes figure B06, B07)
210	601568	Cylinder Upper Plate
211	601569	Cylinder Lower Plate (Includes figure B08)
214	601573	Adjusting Washer (.1mm)
214	601574	Adjusting Washer (.2mm)
214	601575	Adjusting Washer (.3mm)
215	601576	Adjusting Washer (.1mm)
215	601577	Adjusting Washer (.2mm)
215	601578	Adjusting Washer (.3mm)
229	601579	Bearing Spacer
230	601580	Bearing Spacer
255	601571	Motor Fastening Nut
310	601581	Spindle Arbor
423	601582	Bevel Pinion
426	601583	Bevel Gear (Includes figures 541, 551, 583)
430	601584	Gear Case
432	601585	Gear Case Cover
434	601509	Bearing Washer
436	601586	Bearing Holder
541	601104	Button Retainer Spring
551	601105	Plug
583	601106	Retainer Button
593	601587	Front Case
649	601588	Joint
651	601361	Hanger
A01	601005	Ball Bearing
A02	601510	Ball Bearing
A03	601311	Ball Bearing
A04	601008	Ball Bearing (2)*
A05	601510	Ball Bearing
B06	601519	Spring Pin
B07	601086	Spring Pin
B08	601084	Spring Pin
B09	601516	Needle Roller
C09	601425	"O" Ring
C10	601324	"O" Ring (2)*
C11	601054	"O" Ring
C12	601426	"O" Ring
D01	601511	Cap Screw
J01	601001	Ball (2)*
Z01	601504	Name Plate for SPW-770SC-1

Not Shown:	
601283	Wrench Hex 1.5MM
601503	Warning Label

*Order Quantity As Required



2901 FLOYD BOULEVARD ■ PO BOX 507 ■ SIOUX CITY, IOWA 51102-0507 USA ■

FURNISH CATALOG, SERIAL, AND MODEL NUMBER WHEN ORDERING PARTS

Printed In U.S.A.