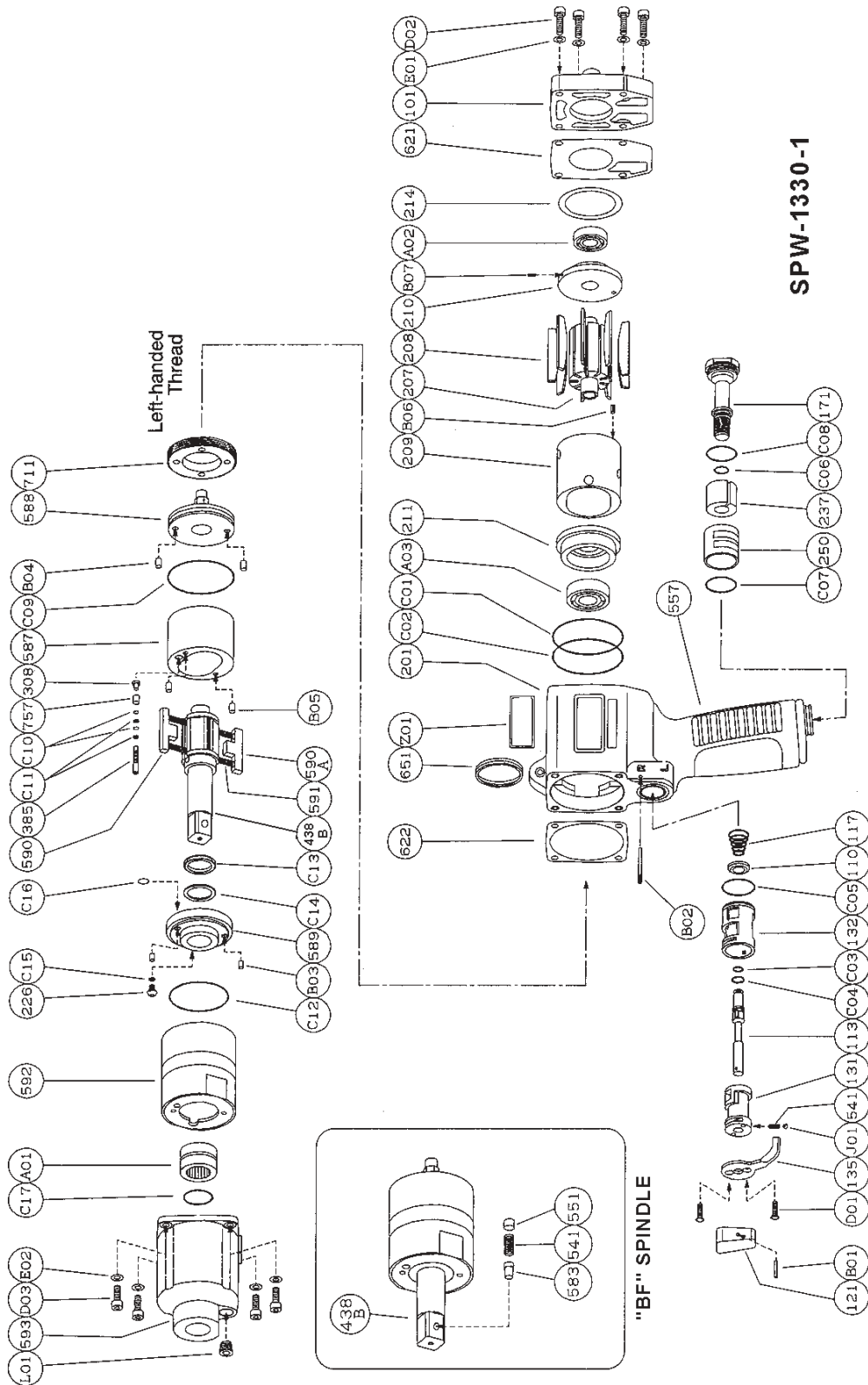




PARTS LIST FOR PULSE TOOL SPW-1330-1 PISTOL GRIP 1/2" SQ DRIVE



SIoux TOOLS INC.

2901 FLOYD BOULEVARD ■ PO BOX 507 ■ SIOUX CITY, IOWA 51102-0507 USA ■

Printed In U.S.A.



PARTS LIST FOR PULSE TOOL SPW-1330-1 PISTOL GRIP 1/2" SQ DRIVE

Fig. No.	Part No.	Description
	601641	Ass'y Housing
Includes the following parts:		
110	601171	Throttle Valve
113	601645	Throttle Valve Rod
117	601557	Throttle Valve Spring
121	601108	Throttle Valve Lever
131	601646	Reverse Valve
132	601647	Reverse Valve Bushing
135	601172	Reverse Valve Lever
171	601173	Inlet Joint (PT)
171	601174	Inlet Joint (NPT)
201	601648	Housing
237	601166	Muffler Pad
250	601175	Exhaust Cover
541	601104	Button Retainer Spring
B01	601087	Spring Pin
B02	601022	Grooved Pin
C01	601629	"O" Ring
C02	601629	"O" Ring
C03	601069	"O" Ring
C04	601050	"O" Ring
C05	601059	"O" Ring
C06	601054	"O" Ring
C07	601060	"O" Ring
C08	601060	"O" Ring
D01	601016	Cap Screw (2)*
J01	601001	Ball

	601642	Ass'y Oil Cylinder
Includes the following parts:		
226	601094	Oil Plug
308	601654	Spacer
385	601634	Adjusting Screw
438B	601635	Spindle
541	601099	Button Retainer Spring
551	601100	Plug
583	601101	Retainer Button
587	601656	Oil Cylinder
588	601657	Oil Cylinder Upper Plate
589	601636	Oil Cylinder Lower Plate
590	601637	Spindle Blade
590A	601638	Spindle Blade
591	601639	Blade Spring (2)*
592	601640	Cylinder Case
711	601632	Cylinder Cover
757	601633	Needle

Fig. No.	Part No.	Description
B03	601024	Grooved Pin (2)*
B04	601040	Needle Roller (2)*
B05	601040	Needle Roller (2)*
C09	601627	"O" Ring
C10	601064	"O" Ring (2)*
C11	601520	Back Up Ring (2)*
C12	601610	"O" Ring
C13	601611	"X" Ring
C14	601013	Back Up Ring
C15	601064	"O" Ring
C16	601628	"O" Ring

	601643	Ass'y Front Case
Includes the following parts:		
593	601658	Front Case
A01	601513	Needle Bearing
C17	601518	"O" Ring
L01	601328	Plug

Common Parts:		
101	601644	Housing Cover
207	601649	Rotor
208	601650	Rotor Blade (Set of 9)
209	601651	Cylinder (Includes figure B06)
210	601652	Cylinder Upper Plate (Includes figure B07)
211	601653	Cylinder Lower Plate
214	601631	Adjusting Washer
557	601655	Protector
621	601659	Packing
622	601660	Packing
651	601093	Horizontal Hanger
A02	601007	Ball Bearing
A03	601008	Ball Bearing
B06	601630	Spring Pin
B07	601088	Spring Pin
D02	601019	Cap Screw (4)*
D03	601019	Cap Screw (4)*
E01	601082	Plain Washer (4)*
E02	601082	Plain Washer (4)*
Z01	601609	Name Plate for SPW-1330-1

Not Shown:		
	601285	Wrench Hex 2mm
	601421	Wrench Hex 5mm
	601503	Warning Label

*Order Quantity As Required



2901 FLOYD BOULEVARD ■ PO BOX 507 ■ SIOUX CITY, IOWA 51102-0507 USA ■

FURNISH CATALOG, SERIAL, AND MODEL NUMBER WHEN ORDERING PARTS

Printed In U.S.A.