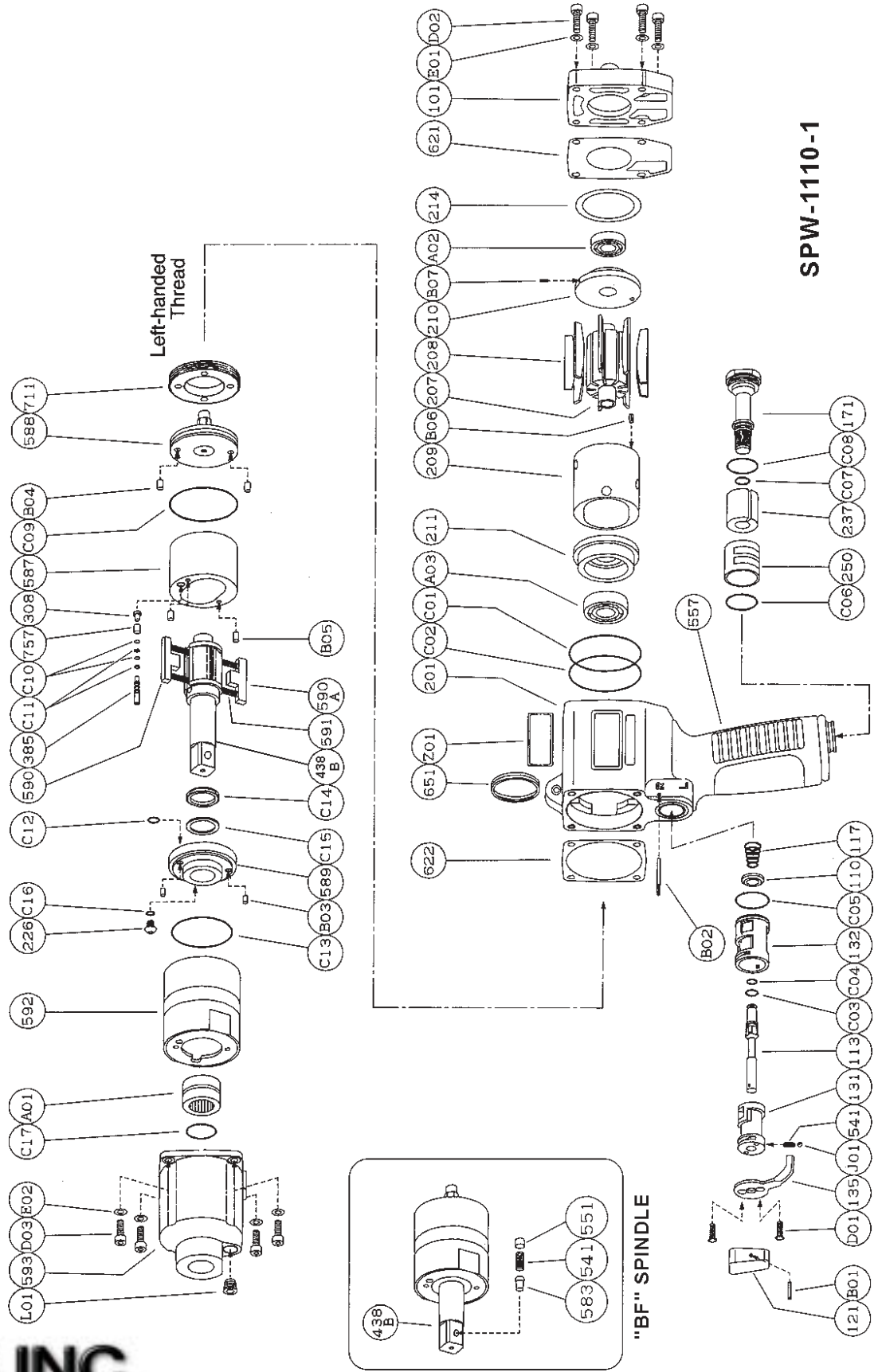




PARTS LIST FOR PULSE TOOL SPW-1110-1 PISTOL GRIP 1/2" SQ DRIVE

Form Z626
Date 4-00/A
Page 1 of 2



SPW-1110-1

SIoux TOOLS INC.

2901 FLOYD BOULEVARD ■ PO BOX 507 ■ SIOUX CITY, IOWA 51102-0507 USA ■

Printed In U.S.A.



PARTS LIST FOR PULSE TOOL SPW-1110-1 PISTOL GRIP 1/2" SQ DRIVE

Fig. No.	Part No.	Description
	601616	Ass'y Housing
Includes the following parts:		
110	601171	Throttle Valve
113	601158	Throttle Valve Rod
117	601557	Throttle Valve Spring
121	601108	Throttle Valve Lever
131	601159	Reverse Valve
132	601160	Reverse Valve Bushing
135	601172	Reverse Valve Lever
171	601173	Inlet Joint (PT)
171	601174	Inlet Joint (NPT)
201	601620	Housing
237	601166	Muffler Pad
250	601175	Exhaust Cover
541	601104	Button Retainer Spring
B01	601087	Spring Pin
B02	601022	Grooved Pin
C01	601075	"O" Ring
C02	601075	"O" Ring
C03	601050	"O" Ring
C04	601069	"O" Ring
C05	601056	"O" Ring
C06	601060	"O" Ring
C07	601054	"O" Ring
C08	601060	"O" Ring
D01	601016	Cap Screw (2)*
J01	601001	Ball

	601617	Ass'y Oil Cylinder
Includes the following parts:		
226	601094	Oil Plug
308	601555	Spacer
385	601623	Adjusting Screw
438B	601613	Spindle
541	601099	Button Retainer Spring
551	601100	Plug
583	601101	Retainer Button
587	601169	Oil Cylinder
588	601624	Oil Cylinder Upper Plate
589	601614	Oil Cylinder Lower Plate
590	601117	Spindle Blade
590A	601118	Spindle Blade
591	601119	Blade Spring (2)*
592	601615	Cylinder Case
711	601097	Cylinder Cover
757	601170	Needle

Fig. No.	Part No.	Description
B03	601024	Grooved Pin (2)*
B04	601040	Needle Roller (2)*
B05	601040	Needle Roller (2)*
C09	601072	"O" Ring
C10	601062	"O" Ring (2)*
C11	601015	Back Up Ring (2)*
C12	601591	"O" Ring
C13	601070	"O" Ring
C14	601611	"X" Ring
C15	601013	Back Up Ring
C16	601064	"O" Ring

	601618	Ass'y Front Case
Includes the following parts:		
593	601625	Front Case
A01	601513	Needle Bearing
C17	601518	"O" Ring
L01	601328	Plug

Common Parts:		
101	601619	Housing Cover
207	601621	Rotor
208	601163	Rotor Blade (Set of 9)
209	601164	Cylinder (Includes figure B06)
210	601165	Cylinder Upper Plate (Includes figure B07)
211	601622	Cylinder Lower Plate
214	601612	Collar Packing
557	601168	Protector
621	601626	Packing
622	601096	Packing
651	601093	Horizontal Hanger
A02	601006	Ball Bearing
A03	601007	Ball Bearing
B06	601086	Spring Pin
B07	601088	Spring Pin
D02	601019	Cap Screw (4)*
D03	601019	Cap Screw (4)*
E01	601082	Plain Washer (4)*
E02	601082	Plain Washer (4)*
Z01	601607	Name Plate for SPW-1110-1

Not Shown:	
601285	Wrench Hex 2mm
601421	Wrench Hex 5mm
601503	Warning Label

*Order Quantity As Required



2901 FLOYD BOULEVARD ■ PO BOX 507 ■ SIOUX CITY, IOWA 51102-0507 USA ■

FURNISH CATALOG, SERIAL, AND MODEL NUMBER WHEN ORDERING PARTS

Printed In U.S.A.