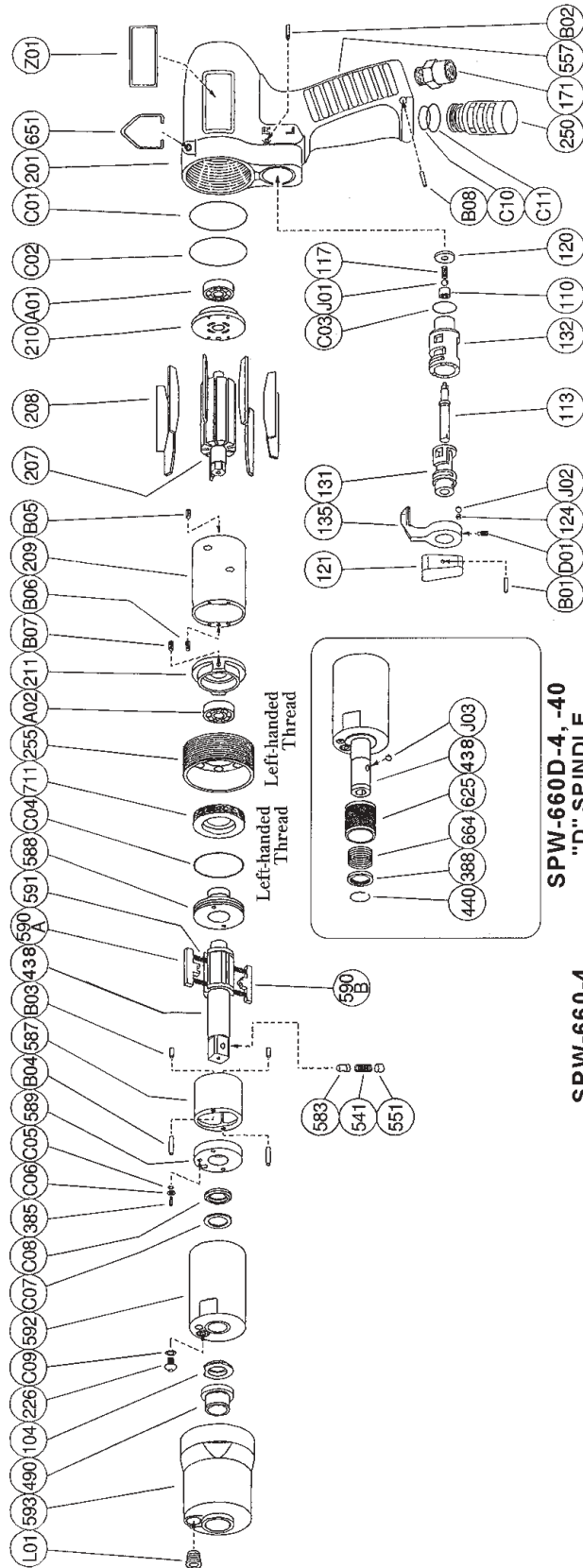




**PARTS LIST FOR PULSE TOOL**  
**SPW-660-4 PISTOL GRIP 3/8" SQ DRIVE**  
**SPW-660D-4 PISTOL GRIP 1/4" HEX**  
**SPW-660D-40 PISTOL GRIP 1/4" HEX**

Form Z620  
 Date 4-00/A  
 Page 1 of 2



**SPW-660D-4, -40  
 "D" SPINDLE**

**SPW-660-4  
 SPW-660D-4  
 SPW-660D-40**

**SIoux  
 TOOLS INC.**

2901 FLOYD BOULEVARD ■ PO BOX 507 ■ SIOUX CITY, IOWA 51102-0507 USA ■

Printed In U.S.A.



# PARTS LIST FOR PULSE TOOL

## SPW-660-4 PISTOL GRIP 3/8" SQ DRIVE

## SPW-660D-4 PISTOL GRIP 1/4" HEX

## SPW-660D-40 PISTOL GRIP 1/4" HEX

Fig. No.	Part No.	Description
	601441	Ass'y Housing
<b>Includes the following parts:</b>		
110	601120	Throttle Valve
113	601121	Throttle Valve Rod
117	601122	Throttle Valve Spring
120	601123	Throttle Valve Cover
121	601108	Throttle Valve Lever
124	601109	Knock Spring
131	601124	Reverse Valve
132	601125	Reverse Valve Bushing
135	601110	Reverse Valve Lever
171	601445	Inlet Bushing (PT)
171	601446	Inlet Bushing (NPT)
201	601447	Housing
B01	601087	Spring Pin
B02	601021	Grooved Pin
C01	601066	"O" Ring
C02	601066	"O" Ring
C03	601055	"O" Ring
D01	601089	Set Screw
J01	601002	Urethane Ball
J02	601001	Ball

	601459	Ass'y Front Case
<b>Includes the following parts:</b>		
490	601434	Spindle Bushing
593	601467	Front Case
L01	601328	Plug

	601442	Ass'y Oil Cylinder (SPW-660-4)
	601443	Ass'y Oil Cylinder (SPW-660D-4)
	601444	Ass'y Oil Cylinder (SPW-660D-40)

<b>Includes the following parts:</b>		
104	601107	Bushing
226	601094	Oil Plug
385	601433	Adjusting Screw
438	601452	Spindle (Includes figures 541, 551, 583) (SPW-660-4)
438	601453	Spindle (SPW-660D-4)
438	601454	Spindle (SPW-660D-40)
541	601435	Button Retainer Spring (SPW-660-4)
551	601105	Plug (SPW-660-4)
583	601106	Retainer Button (SPW-660-4)
587	601112	Oil Cylinder
588	601436	Oil Cylinder Upper Plate
589	601437	Oil Cylinder Lower Plate

Fig. No.	Part No.	Description
590A	601130	Spindle Blade
590B	601131	Spindle Blade
591	601113	Blade Spring (2)*
592	601438	Cylinder Case
711	601440	Cylinder Cover
B03	601038	Needle Roller (2)*
B04	601037	Needle Roller (2)*
C04	601061	"O" Ring
C05	601062	"O" Ring
C06	601015	Back Up Ring
C07	601011	Back Up Ring
C08	601046	"X" Ring
C09	601064	"O" Ring

<b>Common Parts:</b>		
207	601448	Rotor
208	601126	Rotor Blade (Set of 9)
209	601449	Cylinder (Includes figures B05, B06)
210	601127	Cylinder Upper Plate
211	601128	Cylinder Lower Plate (Includes figure B07)
250	601450	Exhaust Cover
255	601451	Motor Fastening Nut
388	601500	Spring Holder (SPW-660D-4, D-40)
440	601501	Ring (SPW-660D-4, D-40)
557	601129	Rubber Protector
625	601502	Bit Cover (SPW-660D-4, D-40)
651	601102	Hanger
664	601416	Finder Spring (SPW-660D-4, D-40)
A01	601009	Ball Bearing
A02	601010	Ball Bearing
B05	601085	Spring Pin
B06	601085	Spring Pin
B07	601084	Spring Pin
B08	601429	Spring Pin
C10	601323	"O" Ring
C11	601055	"O" Ring
J03	601001	Ball (SPW-660D-4, D-40)
Z01	601411	Name Plate for SPW-660-4
Z01	601410	Name Plate for SPW-660D-4
Z01	601409	Name Plate for SPW-660D-40

<b>Not Shown:</b>		
601283	Wrench Hex 1.5mm	
601421	Wrench Hex 5mm	
601327	Driver Bit (75mm) (SPW-660D-4, D-40)	
601503	Warning Label	

\*Order Quantity As Required

**FURNISH CATALOG, SERIAL, AND MODEL NUMBER WHEN ORDERING PARTS**

# SIOUX TOOLS INC.

2901 FLOYD BOULEVARD ■ PO BOX 507 ■ SIOUX CITY, IOWA 51102-0507 USA ■

Printed In U.S.A.