

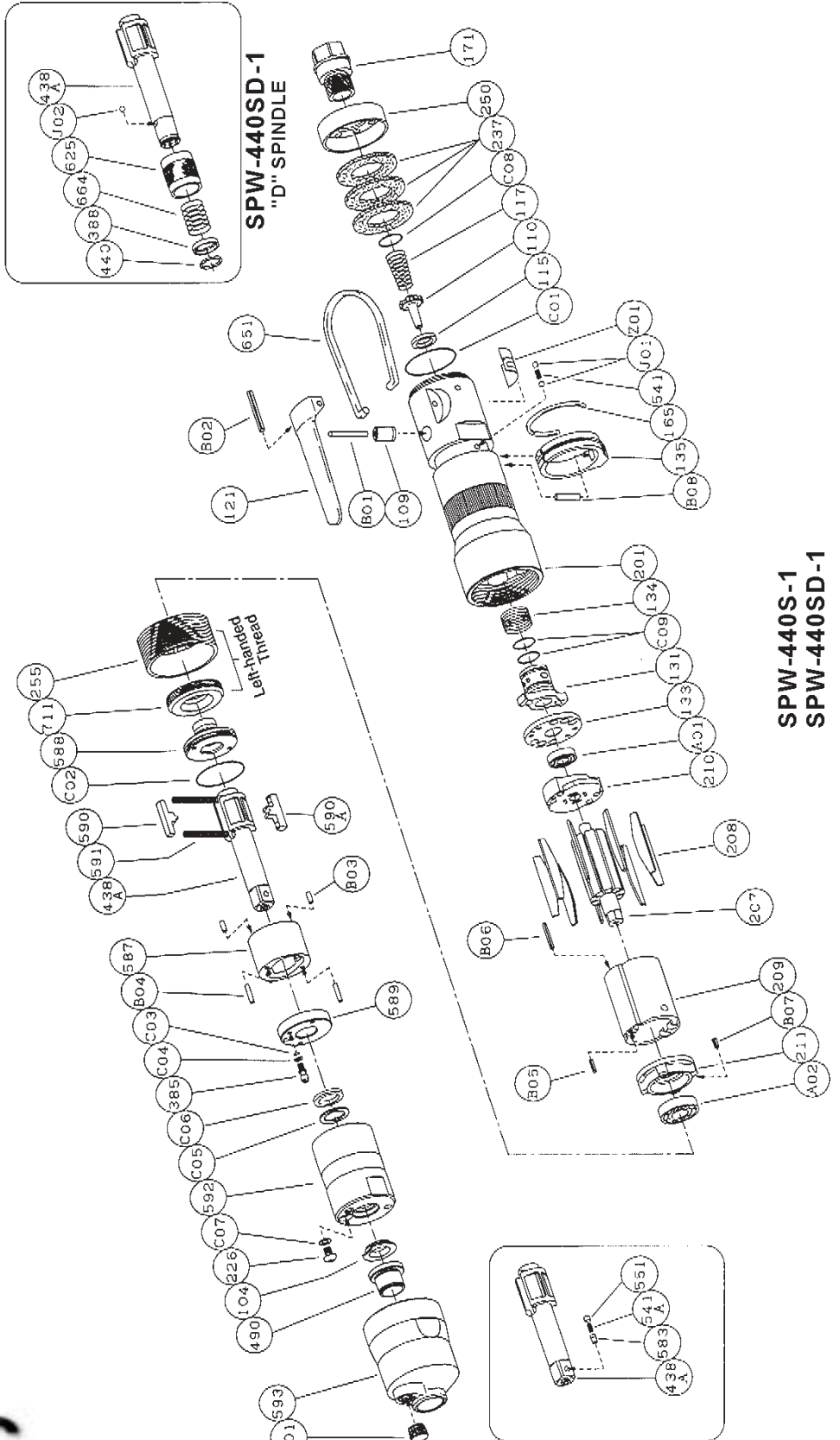


PARTS LIST FOR PULSE TOOL

SPW-440S-1 IN-LINE GRIP 3/8" SQ DRIVE

SPW-440SD-1 IN-LINE GRIP 1/4" HEX

Form Z617
Date 4-00/A
Page 1 of 2



SIoux
TOOLS INC.

2901 FLOYD BOULEVARD ■ PO BOX 507 ■ SIOUX CITY, IOWA 51102-0507 USA ■

Printed In U.S.A.



PARTS LIST FOR PULSE TOOL

SPW-440S-1 IN-LINE GRIP 3/8" SQ DRIVE

SPW-440SD-1 IN-LINE GRIP 1/4" HEX

Fig. No.	Part No.	Description
	601471	Ass'y Housing (SPW-440S-1)
	601472	Ass'y Housing (SPW-440SD-1)
Includes the following parts:		
109	601484	Throttle Valve Bushing
110	601485	Throttle Valve
115	601486	Throttle Valve Sheet
117	601020	Throttle Valve Spring
121	601422	Throttle Valve Lever
171	601490	Inlet Joint (PT)
171	601491	Inlet Joint (NPT)
201	601473	Housing (SPW-440S-1)
201	601474	Housing (SPW-440SD-1)
237	601497	Muffler Pad (3)*
250	601498	Exhaust Cover
B01	601423	Needle Roller
B02	601331	Spring Pin
C01	601426	"O" Ring

	601456	Ass'y Oil Cylinder (SPW-440S-1)
	601457	Ass'y Oil Cylinder (SPW-440SD-1)

Includes the following parts:		
104	601107	Bushing
226	601094	Oil Plug
385	601433	Adjusting Screw
438A	601463	Spindle (Includes figures 541A, 551, 583) (SPW-440S-1)
438A	601464	Spindle (Includes figures 388, 440, 625, 664, J02) (SPW-440SD-1)
541A	601104	Button Retainer Spring (SPW-440S-1)
551	601105	Plug (SPW-440S-1)
583	601106	Retainer Button (SPW-440S-1)
587	601177	Oil Cylinder
588	601436	Oil Cylinder Upper Plate
589	601437	Oil Cylinder Lower Plate
590	601178	Spindle Blade
590A	601179	Spindle Blade
591	601113	Blade Spring (2)*
592	601466	Cylinder Case
711	601440	Cylinder Cover
B03	601038	Needle Roller (2)*
B04	601037	Needle Roller (2)*
C02	601061	"O" Ring
C03	601062	"O" Ring

Fig. No.	Part No.	Description
C04	601015	Back Up Ring
C05	601011	Back Up Ring
C06	601046	"X" Ring
C07	601064	"O" Ring

	601459	Ass'y Front Case
Includes the following parts:		
490	601434	Spindle Bushing
593	601467	Front Case
L01	601328	Plug

Common Parts:		
131	601487	Reverse Valve
133	601488	Reverse Valve Sheet
134	601489	Reverse Valve Spring
135	601430	Reverse Valve Lever
165	601431	Stop Ring
207	601468	Rotor
208	601180	Rotor Blade (Set of 9)
209	601475	Cylinder (Includes figures B05, B06)
210	601495	Cylinder Upper Plate
211	601476	Cylinder Lower Plate (Includes figure B07)
255	601499	Motor Fastening Nut
388	601500	Spring Holder (SPW-440SD-1)
440	601501	Ring (SPW-440SD-1)
541	601104	Button Retainer Spring
625	601502	Bit Cover (SPW-440SD-1)
651	601361	Hanger
664	601416	Finder Spring (SPW-440SD-1)
A01	601009	Ball Bearing
A02	601010	Ball Bearing
B05	601428	Spring Pin
B06	601427	Spring Pin
B07	601084	Spring Pin
B08	601424	Needle Roller
C08	601425	"O" Ring
C09	601425	"O" Ring (2)*
J01	601001	Ball (2)*
J02	601001	Ball (SPW-440SD-1)
Z01	601413	Name Plate for SPW-440S-1
Z01	601415	Name Plate for SPW-440SD-1

Not Shown:		
	601283	Wrench Hex 1.5mm
	601421	Wrench Hex 5mm
	601503	Warning Label

*Order Quantity As Required



2901 FLOYD BOULEVARD ■ PO BOX 507 ■ SIOUX CITY, IOWA 51102-0507 USA ■

FURNISH CATALOG, SERIAL, AND MODEL NUMBER WHEN ORDERING PARTS

Printed In U.S.A.