

- High capacity 3Ah Li-ion battery
- Compact size (LxHxW): 12-61/64" x 8-63/64" x 6-19/64"
- Light weight (incl. battery): 5.70 lbs.
- Rotating Speed: 3,600 rpm
- Blade Size: Outer diameter 5-3/8" Arbor size 13/16"
- Cutting Depth: Max. 1-13/16"
- Electric brake
- Cutting edge is easily seen through transparent window
- In-line ergonomic design for comfortable cutting
- Safety switch lock lever
- Shaft lock button for easy blade replacement
- Charging Time (using EY9L80B charger)*: Usable: 35 minutes Full: 50 minutes
- Electronic performance monitoring system
- LED work light
- With an extra battery pack as standard equipment

REVOLITHIUM

NEW



3Ah Li-ion



Typical Application

- Metal construction
- Electric installation work
- Plumbing
- General construction

Metal Cutting EY9PM13C Standard



- C-6 tungsten carbide-tipped blade for metal cutting
- 30 teeth
- Kerf (in.): 1/16" (.055)

Thin Metal Cutting EY9PM13D Option



- C-6 tungsten carbide-tipped blade for thin metal cutting
- 50 teeth
- Kerf (in.): 1/16" (.055)

Wood Cutting EY9PW13A Option



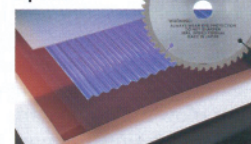
- C-6 tungsten carbide-tipped blade for wood cutting
- 30 teeth
- Kerf (in.): 3/64" (.047)

Thin Wood Cutting EY9PW13B Option



- C-6 tungsten carbide-tipped blade for thin wood cutting
- 48 teeth
- Kerf (in.): 3/64" (.047)

Plastic Cutting EY9PP13B Option

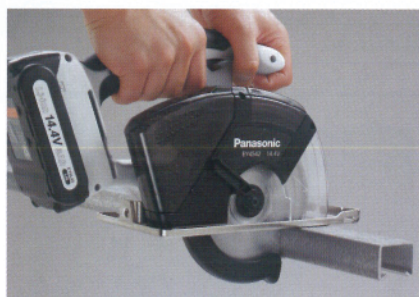


- C-6 tungsten carbide-tipped blade for plastic cutting
- 52 teeth
- Kerf (in.): 3/64" (.047)

3-way Dust Control



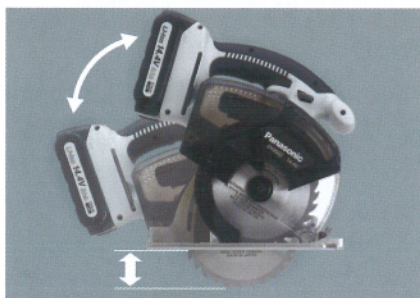
1 Use with vacuum cleaner to collect dust



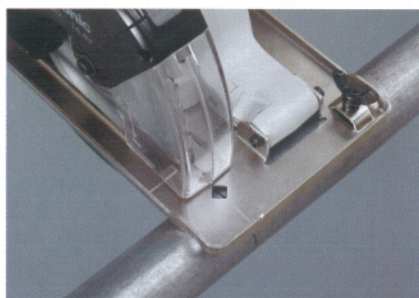
2 Collect dust in the dust case



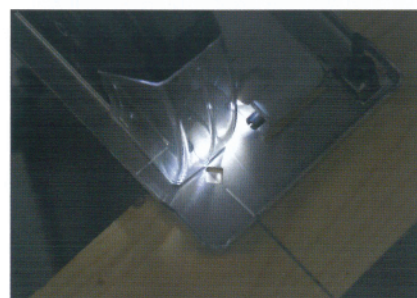
3 Eject dust to the rear of the machine



Cutting depth adjustment



Cutting edge is easily seen through window



White LED light