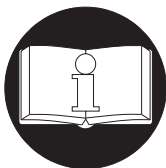


PARTS AND MAINTENANCE MANUAL **for** **AIR HOIST ROPE CONTROL**

Rope Control is suitable for mounting on the following Air Hoist Models:
Liftchain LCA Series 1.5 to 25 tons (non CE models only)
Palair Plus Series 0.25 to 2 ton (non CE models only)

Hoist pendant controls for the above models can be replaced with a Rope Control without dismounting the hoist.



This manual contains parts ordering information. Make this manual available to all persons responsible for the maintenance of these products.

MAINTENANCE

Rope Control Disassembly

Refer to Dwg. MHP1986 on page 2.

1. Remove capscrews (15) and seal washers (19). Separate motor cover (14) from hoist.
2. Remove 'O' Rings (17).
3. Remove nut (12) and capscrew (11).
4. Remove lever (16) and springs (20). If required remove pull chain (22) and throttle handles (23) from lever.
5. Remove screws (8).
6. Remove valves (1).
7. Remove protector (2) and 'O' Rings (3 and 4) from each valve.
8. Remove plugs (7).
9. Remove springs (6) and balls (5).
10. Remove setscrews (13).
11. Remove retainer ring (9).
12. Remove exhaust washer (10).

Rope Control Assembly

Assembly of the pendant control is the same as disassembly in opposite order.

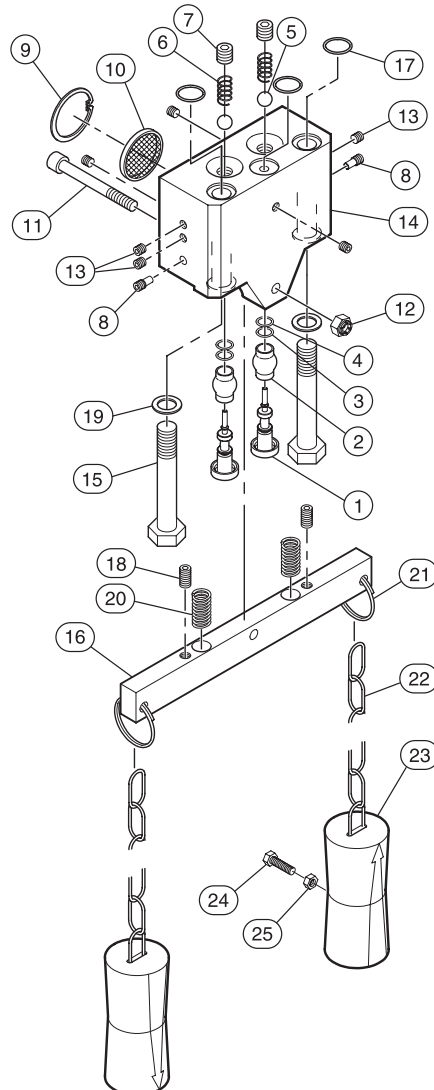
NOTICE

- Lubricate valves (1).
- Apply a small amount of Loctite® 243 on threads of screws (8).
- Apply a small amount of Loctite® 577 on threads of plugs (7).

Adjustments

1. Adjust setscrews (18) in lever (16) to limit travel.

ROPE CONTROL ASSEMBLY PARTS DRAWING



(Dwg. MHP1986)

Reference engineering drawing D5790032.

ROPE CONTROL ASSEMBLY PARTS LIST

ITEM NO.	DESCRIPTION OF PART	TOTAL QTY	PART NUMBER
1	Valve	2	95790104
2	Protector	2	95790107
• 3	'O' Ring	2	58209229
• 4	'O' Ring	2	58235329
• 5	Ball	2	69401625
6	Spring	2	69128541
7	Plug	2	65107741
8	Screw	2	42008307
9	Retainer Ring	1	47713030
10	Exhaust Washer	1	67600303
11	Capscrew	1	41321706
12	Nut	1	43707611
13	Setscrew	6	43007807
14	Motor Cover	1	95790138
15	Capscrew	2	95790139
16	Lever	1	95790140
• 17	'O' Ring	3	58210729
18	Setscrew	2	42008607
• 19	Seal Washer	2	58409731
20	Spring	2	69135141
21	Ring	2	90530031
22	Pull Chain	As Req'd	69001332
23	Throttle Handle	2	MR-415
24	Screw	2	41000201
25	Nut	2	43703411

• Recommended Spare

PARTS ORDERING INFORMATION

Return Goods Policy

Ingersoll-Rand will not accept returned goods for warranty or service unless prior arrangements have been provided from the location the goods were purchased.

Disposal

When the life of the product has expired, it is recommended that the product be disassembled, degreased and parts separated as to materials so that they may be recycled

For additional information contact:

**Ingersoll-Rand Material Handling
Douai Operations**

111, avenue Roger Salengro
59450 Sin le Noble France
Phone: (33) 3-27-93-08-08
Fax: (33) 3-27-93-08-00

United States Office Locations

Ingersoll-Rand Distribution Center For Technical Support:

P.O. Box 618
510 Hester Drive
White House, TN 37188
Phone: (615) 672-0321
Fax: (615) 672-0801

Web Site:

www.ingersoll-rand.com

Regional Sales Offices

Detroit, MI

1872 Enterprise Drive
Rochester Hills, MI 48309
Phone: (248) 293-5700
Fax: (248) 293-5800

Houston, TX

450 Gears Road
Suite 210
Houston, TX 77067-4516
Phone: (281) 872-6800
Fax: (281) 872-6807

Los Angeles, CA

11909 E. Telegraph Road
Santa Fe Springs, CA 90670-
0525
Phone: (562) 948-4189
Fax: (562) 948-1828

Philadelphia, PA

P.O. Box 425
900 E. 8th Ave., Suite 103
King of Prussia, PA 19406
Phone: (610) 337-5930
Fax: (610) 337-5912

International Office Locations

Offices and distributors in principal cities throughout the world. Contact the nearest **Ingersoll-Rand** office for the name and address of the distributor in your country or write/fax to:

Ingersoll-Rand Material Handling

P.O. Box 618
510 Hester Drive
White House, TN 37188 USA
Phone: (615) 672-0321
Fax: (615) 672-0801

Canada

National Sales Office Regional Warehouse

Toronto, Ontario
51 Worcester Road
Rexdale, Ontario
M9W 4K2
Phone: (416) 213-4500
Fax: (416) 213-4510
Order Desk
Fax: (416) 213-4506

Regional Sales Offices

Edmonton, Alberta

1430 Weber Center
5555 Calgary Trail N.W.
Edmonton, Alberta
T6H 5P9
Phone: (780) 438-5039
Fax: (780) 437-3145

Montreal, Quebec

3501 St. Charles Blvd.
Kirkland, Quebec
H9H 4S3
Phone: (514) 695-9040
Fax: (514) 695-0963

British Columbia

1200 Cliveden Avenue
Delta, B.C.
V3M 6G4
Phone: (604) 523-0803
Fax: (604) 523-0801

Latin America Operations

Ingersoll-Rand Production Equipment Group

730 N.W. 107 Avenue, Suite
300
Miami, FL 33172-3107 USA
Phone: (305) 559-0500
Fax: (305) 559-7505

Europe, Middle East and Africa

Ingersoll-Rand Material Handling Douai Operations

111, avenue Roger Salengro
59450 Sin Le Noble, France
Phone: (33) 3-27-93-08-08
Fax: (33) 3-27-93-08-00

Asia Pacific Operations

Ingersoll-Rand Asia Pacific Inc.

Suite 1201-3, 12/F
Central Plaza
18 Harbour Road
Wanchai, Hong Kong
Phone: (852) 2527 0183
Fax: (852) 2529 5976

Russia

Ingersoll-Rand

Kuznetsky Most 21/5
Entrance 3
Moscow 103895 Russia
Phone: 7-501-923-91-34
Fax: 7-501-924-46-25