

# INSTALLATION AND REPAIR PARTS for C6H40A57-K425 AND D6100A26-K425 SWIVEL BLOCK KITS

Form P6747  
Edition 1

**CAPACITY 1 TO 3 METRIC TONS (2200 to 6600 LBS.) C6H40A57-K425  
5 TO 6 METRIC TONS (11000 to 13200 LBS.) D6100A26-K425**

## WARNING

These Swivel Block Kits are limited to lifting 6600 lbs. (2994 kg)  
for C6H40A57-K425 and 13200 lbs. (5987 kg) for D6100A26-K425

**Always install, inspect and maintain this Swivel Block Kit in accordance with  
American National Standards Institute Safety Codes (ANSI B30. 11, ANSI  
B30. 16) and any other applicable safety codes and regulations.**

**READ ALL INSTRUCTIONS BEFORE INSTALLING, OPERATING OR REPAIRING THIS SWIVEL  
BLOCK KIT.**

## OPERATION

These Swivel Block Kits are used to allow dual suspension hoists to travel on a curved beam or track. They fit between the hoist lug and the suspension. Each Kit contains two Swivel Block Assemblies.

## INSTALLATION

Make sure your Swivel Block Kit is properly installed. Follow the instructions listed.

1. Remove any load, shut off the air supply to the hoist and trolley and disconnect the air lines before attempting any installation or repair of this Kit.
2. Assemble the Swivel Block Kit on the workbench as shown on Page 2. Tighten the slotted Nut (6) so there is 1/8" (3.2 mm) between the Swivel Block (2) and Top Yoke (3). Align a slot in the Nut with the hole in the Bolt (1) and install the Pin (8).
3. See Page 2 for the application of the Swivel Block Kit and install as shown. Tighten the Lug Bolt Nut (9) to 150 ft-lbs (203 N m) torque for the C6H40A57-K425 and 250 ft-lbs (339 N m) torque for the D6100A26-K425.
4. The number of Washers between the Swivel Block and the Trolley Side Plates must be the same in order to keep the hoist centered under the beam.
5. Adjust the trolley as specified in the trolley instructions of the Operator's Manual.

## HOW TO ORDER REPAIR PARTS FOR YOUR SWIVEL BLOCK KIT

Your Swivel Block Kit is designed and constructed to give you long, troublefree service. In time it may become necessary to order and install new parts to replace those that have been subjected to wear. For prompt service and genuine Ingersoll-Rand parts, place orders with your nearest Ingersoll-Rand Distributor. The use of other than genuine Ingersoll-Rand replacement parts may result in decreased performance, and may invalidate all warranties.

When ordering parts, give your Distributor the following data:

1. Complete model number of Hoist or Trolley as it appears on the nameplate.
2. Complete part number, part description and quantity needed as shown on Page 2.

If it becomes necessary to return the complete Kit or certain parts to the factory, consult the Distributor from whom you purchased the Kit or the nearest Ingersoll-Rand Distributor in your locality.

Refer All Communications to the Nearest  
Ingersoll-Rand Office or Distributor.

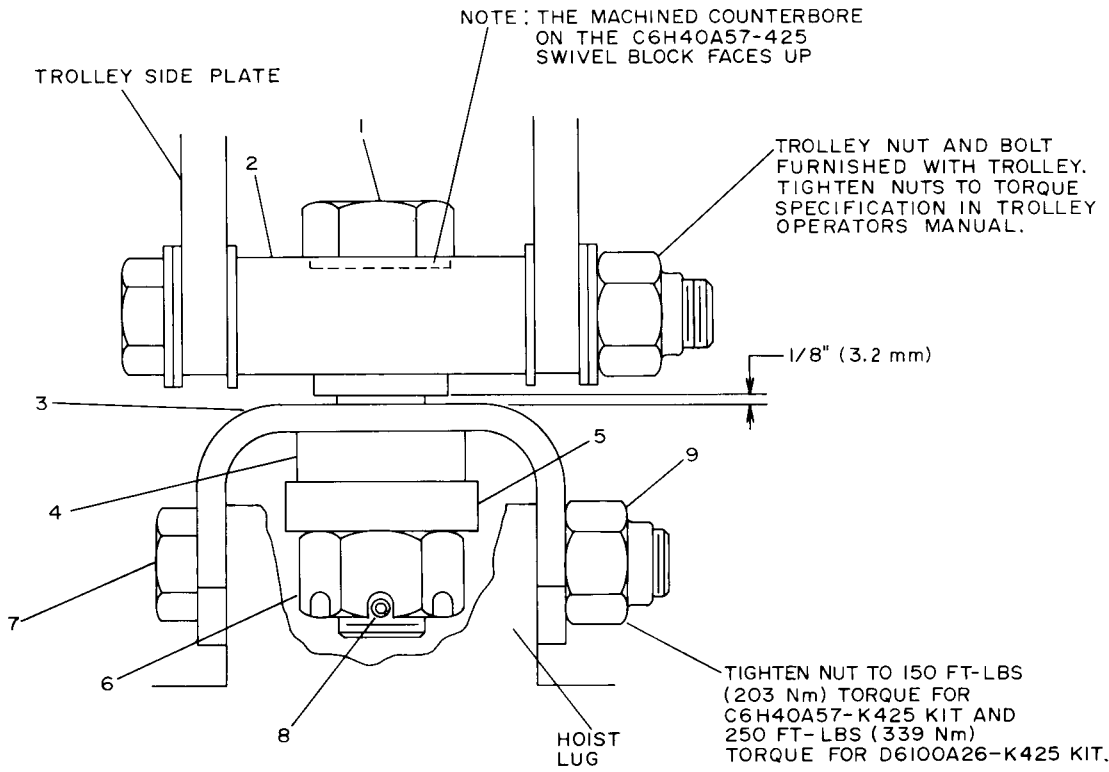
© Ingersoll-Rand Company 1984

Printed in U.S.A.

**INGERSOLL-RAND®**  

---

**AIR HOISTS**



(Dwg. TPC482)

**PART NUMBER FOR ORDERING**

1	Bolt	for C6H40A57-K425 .....	C6H40A57-823
		for D6100A26-K425 .....	D6100A-823
2	Swivel Block	for C6H40A57-K425 .....	C6H40A57-425
		for D6100A26-K425 .....	D6100A-425
3	Yoke	for C6H40A57-K425 .....	C6H40A57-590
		for D6100A26-K425 .....	D6100A-590AX
4	Bearing	for C6H40A57-K425 .....	D06-379A
		for D6100A26-K425 .....	D10-379A
5	Spacer	for C6H40A57-K425 .....	C6H40A57-825
		for D6100A26-K425 .....	D6100A-825
6	Nut	for C6H40A57-K425 .....	C6H40A57-824
		for D6100A26-K425 .....	D10-440B
7	Lug Bolt	for C6H40A57-K425 .....	D02-339
		for D6100A26-K425 .....	D10-339
8	Pin.....		DU-398
9	Nut	for C6H40A57-K425 .....	D02-440B
		for D6100A26-K425 .....	D6100A-824