

INSTALLATION AND REPAIR PARTS for PLAIN RIGID TROLLEYS

Form P6742
Edition 1

3.25" to 7.25" (83 to 184 mm) Flange Width

TPB6A-K430, TAB6A-K430 Standard; Taper Tread Wheels

TPB6A-K430T, TAB6A-K430T Standard; Flat Tread Wheels

TPB6A-K1430, TAB6A-K1430 Spark-Resistant; Taper Tread Wheels

TPB6A-K1430T, TAB6A-K1430T Spark-Resistant; Flat Tread Wheels

Always operate, inspect and maintain this Trolley in accordance with American National Standards Institute Safety Code (ANSI B30.11, B30.16) and any other applicable safety codes and regulations.

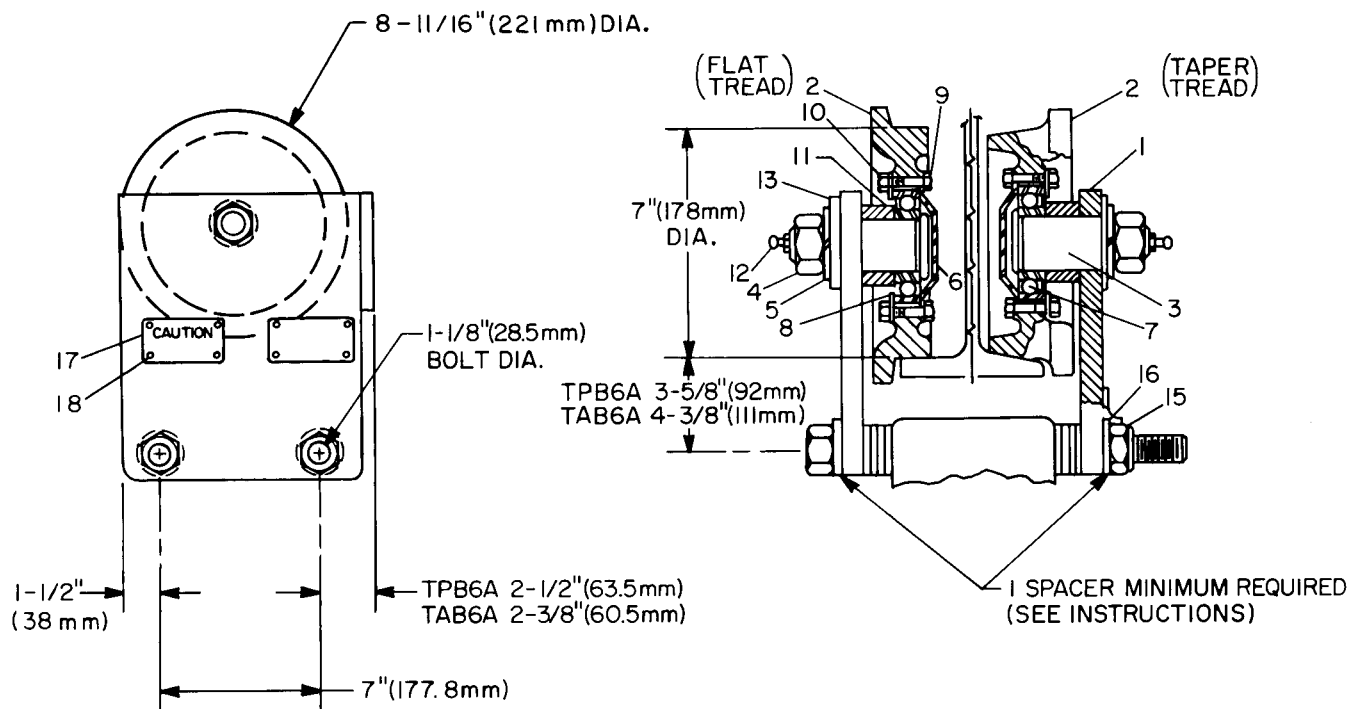
READ ALL INSTRUCTIONS BEFORE INSTALLING, OPERATING OR REPAIRING THESE PLAIN RIGID TROLLEYS.

FOR USE ON 5 TO 6 TON CAPACITY CABLE HOIST WITH DUAL SUSPENSION AS FOLLOWS:

FOR 2-PART SINGLE REEVING AND 4-PART SINGLE REEVING—Use only in conjunction with a 4 wheel trolley (plain or powered) and **Must Be Mounted On End of Hoist, Opposite Cable Anchor To Housing.**

FOR 2-PART DOUBLE REEVING—May be used on both ends of the hoist or in conjunction with a 4 wheel powered trolley mounted on either end of hoist.

CAUTION: DO NOT EXCEED 4 TON (8800 POUNDS) LOADING ON THESE TROLLEYS. IF IN DOUBT AS TO PROPER MOUNTING, CONSULT YOUR NEAREST INGERSOLL-RAND HOIST DISTRIBUTOR.



(Dwg. TPD928)

Refer All Communications to the Nearest
Ingersoll-Rand Office or Distributor.

© Ingersoll-Rand Company 1984

Printed in U.S.A.

INGERSOLL-RAND®
AIR HOISTS

INSTALLING THE TROLLEY

When installing a Trolley on a beam, measure the beam flange and temporarily install the Trolley on the Hoist to determine the exact distribution and arrangement of the spacers. The distance between the wheel flanges should be 3/16" to 1/4" (4.76 to 6.35 mm) greater than the width of the beam flange. The number of spacers between the Trolley side plate and the mounting lug on the Hoist must be the same in all four locations in order to keep the Hoist centered under the I-beam. If required for proper beam spacing, the number of spacers on one side plate may differ from the number of spacers on the other by one, but the spacers must be the same on each sideplate. The remaining spacers must be equally distributed on the outside of the side plate. **Warning: At least one spacer must be used between the bolt head and side plate and nut and side plate. Failure to do so could cause the Hoist to fall when used improperly. Tighten the Trolley Bracket Bolt Nuts to 250 ft-lb (339 N m) of torque.**

When installing the Hoist and Trolley on the beam, make certain the side plates are parallel and vertical. After installation, operate the Trolley over the entire length of the beam with a capacity load suspended a few inches off the floor.

LUBRICATION

Periodically, grease wheels with Ingersoll-Rand No. 68 Grease or a standard No. 2 multi-purpose grease. A grease fitting is provided on the end of each wheel axle.

HOW TO ORDER REPAIR PARTS FOR YOUR TROLLEY

Your Trolley is designed and constructed to give you long, troublefree service. In time it may become necessary to order and install new parts to replace those that have been subjected to wear. For prompt service and genuine Ingersoll-Rand parts, place orders with your nearest Ingersoll-Rand Distributor. The use of other than genuine Ingersoll-Rand replacement parts may result in decreased performance, and may invalidate all warranties.

When ordering parts, give your Distributor the following data:

1. Complete model number of the Trolley.
2. Complete part number, part description and quantity needed as shown below.

PART NUMBER FOR ORDERING

1	Trolley Side Plate (2)	
	Standard (all TPB6A)	TPB6A-430
	Spark-Resistant (all TPB6A)	TPB6A-1430
	Standard (all TAB6A)	TAB6A-430
	Spark-Resistant (all TAB6A)	TAB6A-1430
2	Wheel (2)	
	Flat Tread Standard	D10-T431B
	Taper Tread Standard	D10-431B
	Flat Tread Spark-Resistant	D10-T1431B
	Taper Tread Spark-Resistant	D10-1431B
3	Trolley Wheel Shaft (2)	D10-435A
4	Trolley Wheel Shaft Nut (2)	D10-305A
5	Shaft Nut Lock Washer (2)	WASHER LOCK-1.50
6	Wheel Bearing Cover (2)	D10-954
7	Trolley Wheel Bearing (2)	D10-956
8	Wheel Bearing Plate (2)	D10-955
9	Wheel Cap Screw (8)	D10-957A
10	Wheel Cap Screw Nut (8)	503-639
11	Wheel Shaft Spacer (2)	TP6-442A
12	Wheel Shaft Grease Fitting (2)	23-189
13	Wheel Shaft Washer (2)	WASHER-1.50
14	Trolley Mounting Bolt (2)	D10-439A-14
15	Mounting Bolt Nut (2)	D10-440B
16	Trolley Mounting Spacer (72)	D10-442
17	Caution Tag	TP200-943
18	Nameplate Drive Screw (8)	R4K-302