

**NO. PILOT-A122A AND NO. PILOT-A132A
PILOT OPERATED TWO AND THREE MOTOR
PENDENT THROTTLE HANDLE ASSEMBLIES**

PART NUMBER FOR ORDERING 

50	Multiple Pendent Throttle Handle Assembly	
	Two Motor Handle	PILOT-A122A
	Three Motor Handle.	PILOT-A132A
51	Valve Cap (4 for Two Motor Handle; 6 for Three Motor Handle)	MLK-K266A
52	Valve Spring (4 for Two Motor Handle; 6 for Three Motor Handle)	MLK-51A
52A	Valve Cap Gasket (4 for Two Motor Handle; 6 for Three Motor Handle)	MLK-504
53	Throttle Valve (4 for Two Motor Handle; 6 for Three Motor Handle)	MLK-K264A
54	Throttle Valve Face (1 for each Valve)	R000BR1C-283
55	Throttle Lever (4 for Two Motor Handle; 6 for Three Motor Handle)	R00H-273A
56	Lever Retaining Pin	
	for Two Motor Handle	D02-125
	for Three Motor Handle	D02-135
*	Retaining Pin Lock Washer (5 for Two Motor Handle; 7 for Three Motor Handle)	D02-138
57	Retaining Pin Screw (5 for Two Motor Handle; 7 for Three Motor Handle)	MF-31
58	Chain Anchor Pin	R4-15
*	Anchor Pin Lock Screw	H54U-561
*	Reducing Bushing (3/8" to 1/8") (4 for Two Motor Handle; 6 for Three Motor Handle)	HRA-802

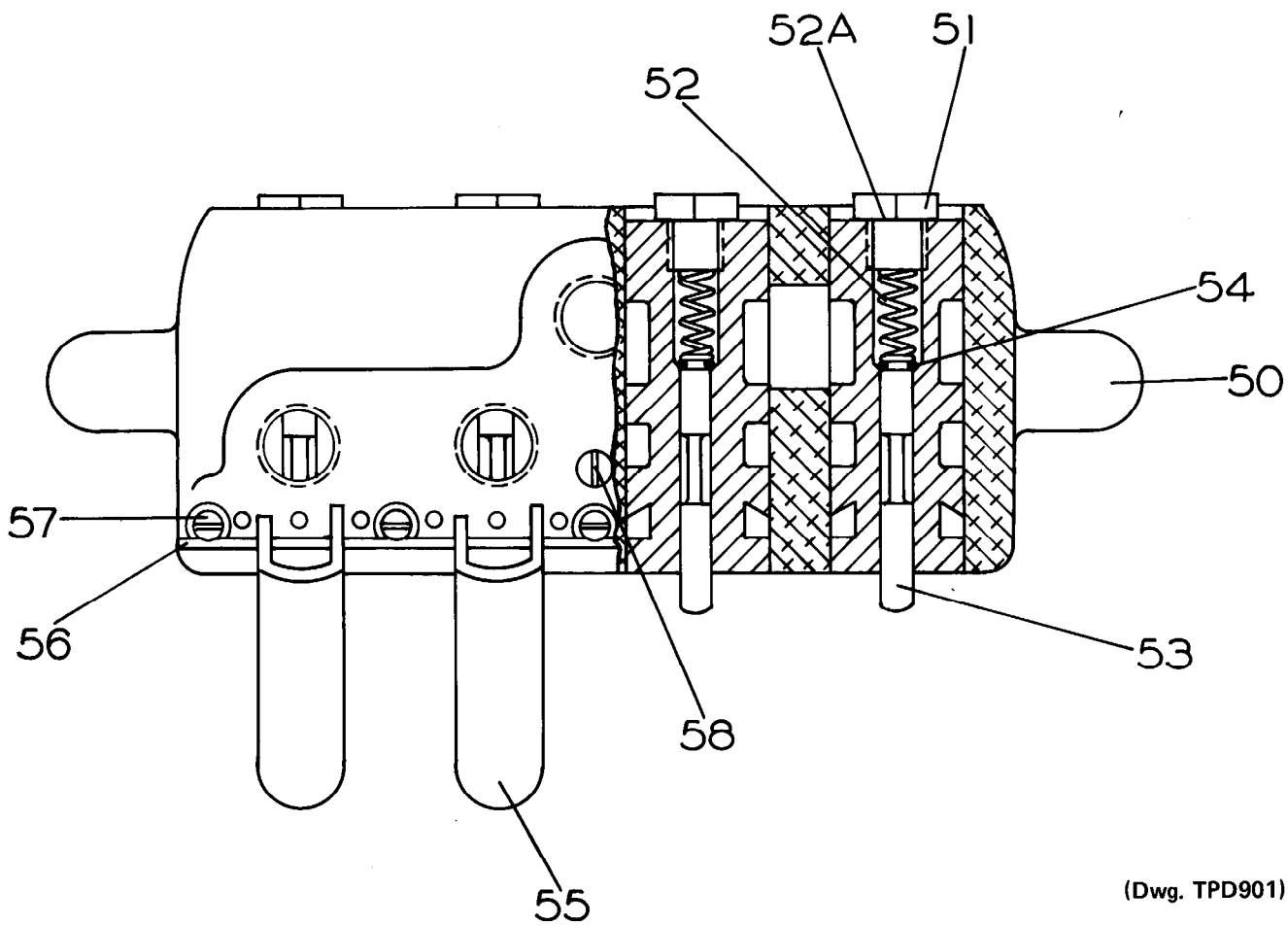
* Not illustrated.

Refer All Communications to the Nearest
Ingersoll-Rand Office or Distributor.

© Ingersoll-Rand Company 1983

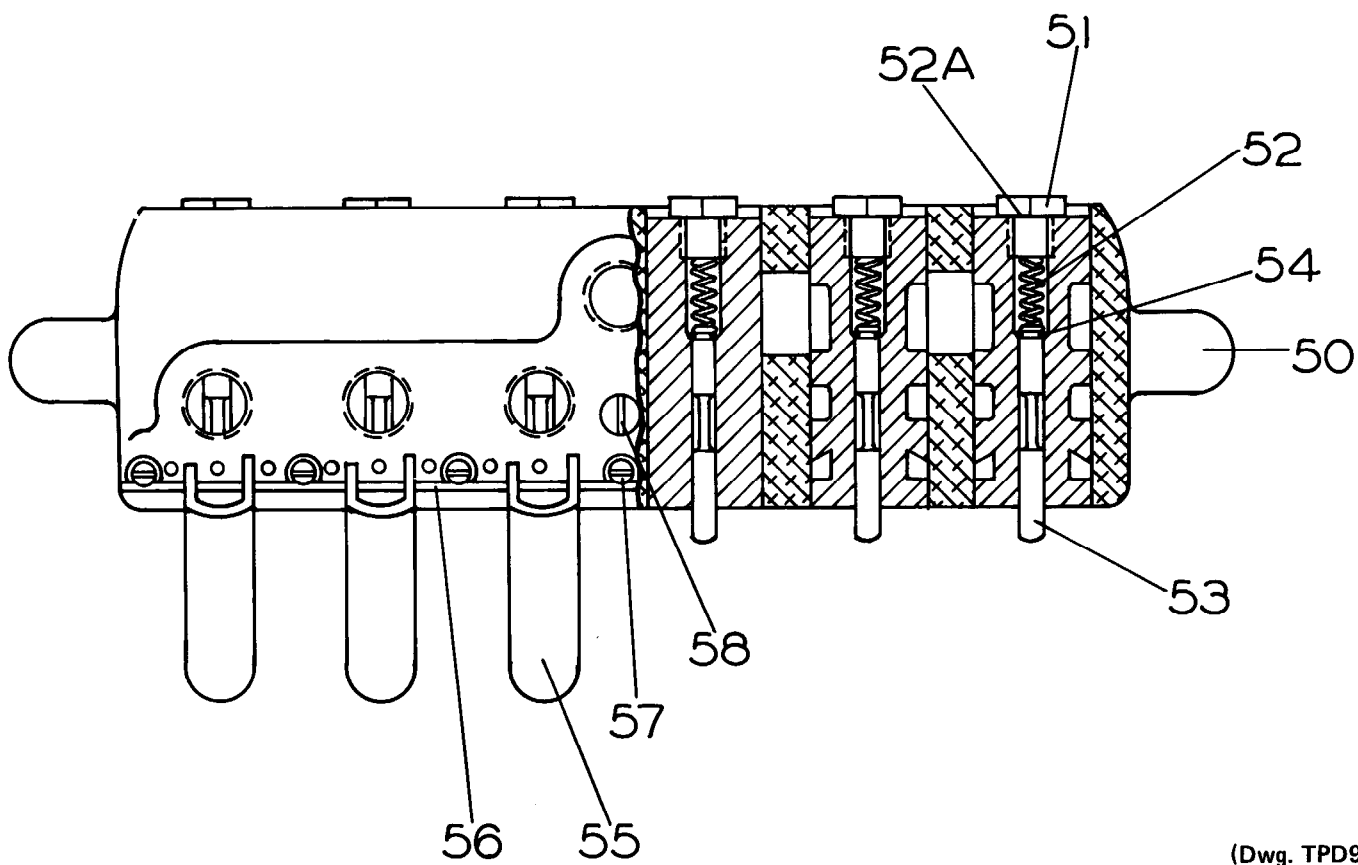
Printed in U.S.A.

INGERSOLL-RAND®
AIR HOISTS



(Dwg. TPD901)

No. PILOT-A122A Two Motor Pendent Throttle Handle



(Dwg. TPD902)

No. PILOT-A132A Three Motor Pendent Throttle Handle